

# Quick

*Champion Series*

700 · 700 B · 800 · 800 B



## Quick

Corporation  
of America

P. O. BOX 938

Costa Mesa, Calif. 92627



Quality Product by D·A·M Western Germany



# Quick

Corporation  
of America

P.O. BOX 938

Costa Mesa, Calif. 92627

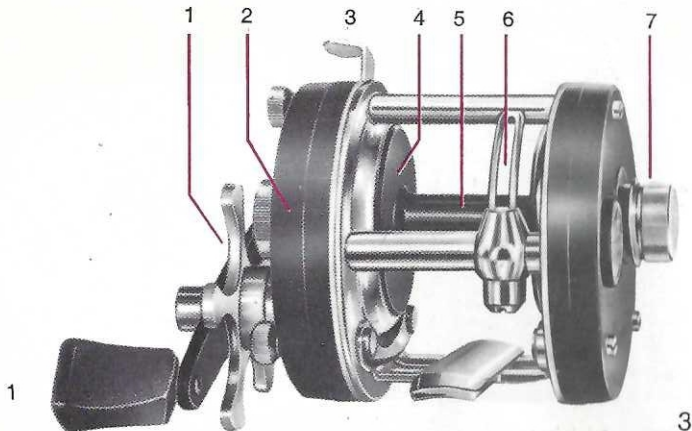
■ Congratulations on the purchase of your new Quick Reel. This reel has been thoroughly engineered and tested under all types of conditions. It will give you years of enjoyable use with sensible care. A few tips on preventive maintenance: rinse with fresh water after use and wipe dry, add a few drops of oil or lubricant spray to areas indicated by small arrows on the reel. Back off drag when stored and not in use. Good luck and good fishing

Quick Corporation

## Technical Information on Champion-Reels

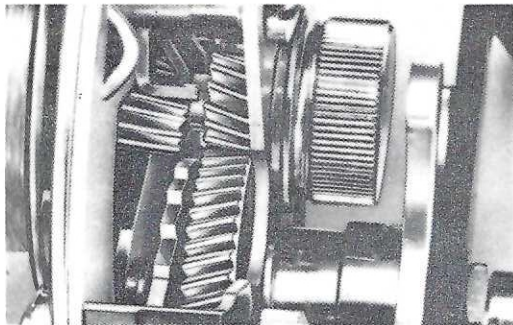
Type of reel	Ratio	Retrieve inch	type of bearing	weight oz.	Line capacity (ca. yds.) shallow / deep						
					6 lbs	8 lbs	10 lbs	12 lbs	15 lbs	20 lbs	25 lbs
<b>700</b>	1:3,5	15,75"	slide bearing	10,1	470/580	380/455	300/390	265/300	165/225	130/165	88/120
<b>700 B</b>	1:4,6	20,87"	ball bearing	10,1							
<b>800</b>	1:3,5	15,75"	slide bearing	10,9	550/720	490/590	440/535	330/425	230/310	210/240	135/160
<b>800 B</b>	1:4,6	20,87"	ball bearing	10,9							

1. Star Drag Brake
2. Gear
3. Free Spool
4. Centrifugal Brake
5. Spool
6. Line Winding
7. Spool Tension Brake



**Gear** Precision machined and hand fitted helical toothed gear out of very robust gear material (Pict. 2).

2

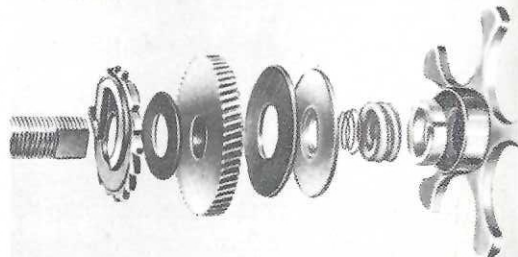


4

### Three brakes

**1. Star drag brake** Ultra smooth multiple disc drag – featuring heat dissipating asbestos. The large setting range of the star drag allows extremely fine tension adjustments (Pict. 3).

3



**2. Centrifugal brake** Controls the speed of the spool during a cast and can be adjusted by using the different centrifugal weight provided (Pict. 4).



**3. Spool tension brake** Calibrated spool tension brake enables you to adjust spool tension to permit longer casting distances (Pict. 5).



**Line winding** The precision machined line guide mechanism is smooth running – winds the line evenly across the spool (Pict. 6).



**Spool** Machined one piece solid aluminium spool. Light weight, strong and perfectly balanced (Pict. 7).

7



6

**Anti-reverse clutch** Automatic and silent operating

**Bearings** Self centering precision machined, stainless steel bearings.

**Free spool** By depressing the clutch, free spool is engaged.

**Center of gravity** Low center of gravity of reel allows for ease of fishing.

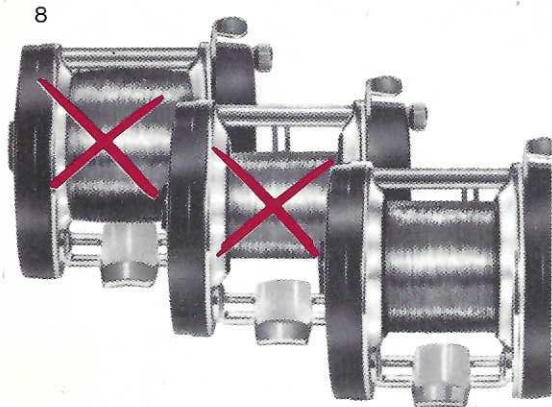
**Surface** High quality metallic finish, galvanic treated to resist corrosion.



## Preparing to use the reel

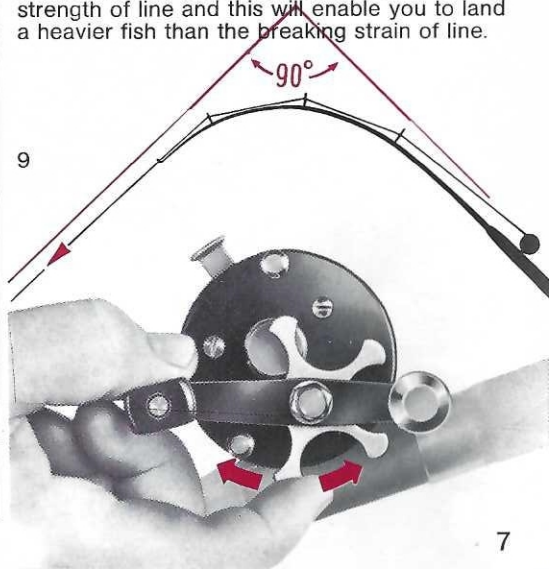
### Step 1: Mount the reel to the rod

**Step 2: Winding the line** Wind the line up to 1-2 mm below the edge of the spool (Pict. 8). Line capacity see page 3.



### Step 3: Adjustment of brakes

**Star drag brake** This brake should prevent the line from breaking. By turning this star drag, the tension on the line can be adjusted in such a way that on a test like shown in figure 9, the brake intervenes before the line breaks. In other words, set line tension below breaking strength of line and this will enable you to land a heavier fish than the breaking strain of line.



**Step 3 con't: Centrifugal brake** For novices it is advisable to use the two large centrifugal weights that are inserted in at the factory. Experienced anglers should try the smaller weights. To change the weights, remove the cover cap like shown in figure 10, change the weights, replace the cover cap.

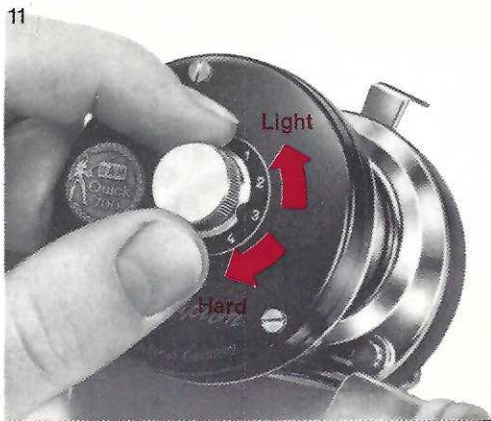
10



8

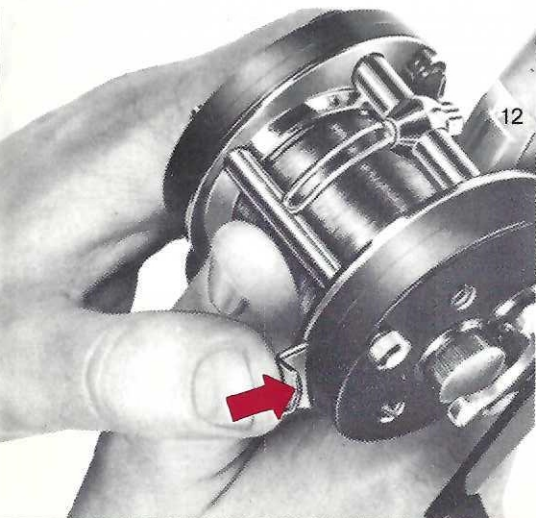
**Step 3 con't: Spool tension brake** Novices should use the setting on the spool tension brake as shown in figure 11. Practice casting with the brake at this setting. After you are able to manage several casts without backlashes, release the tension on the spool. This will permit longer casts (Pict. 11).

11

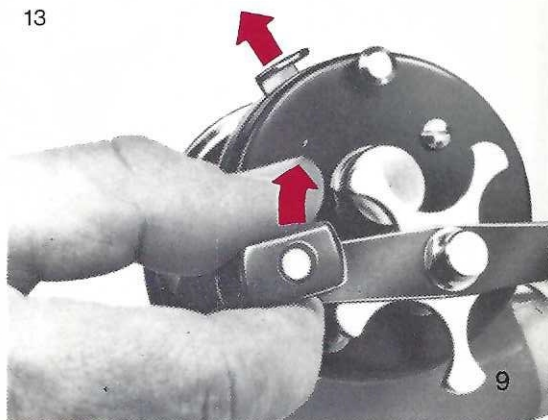




**Step 4: Engaging the free spool** By depressing the clutch, the free spool is engaged. Place the thumb of your casting hand on the spool in order to prevent the line from running out. The reel is now ready for casting (Pict. 12).



**Step 5: Disengaging the free spool** By turning the crank arm you are instantly in gear. The reel is now ready for retrieving (Pict. 13).



**Changing the spool** Unscrew the case cover like shown in figure 10. Pull off the spool and insert the new spool (Pict. 14).

**Attention!** Be careful not to lose the centrifugal weights.



### **Hints for advanced anglers regarding casting distances and backlashes**

The length of cast can be increased by:

- a Using the smaller centrifugal weights
- b Using a light setting on the spool tension brake
- c Keeping your spool filled to the proper level
- d Using a small diameter line

**Note:** By adjusting the reel for longer casting distances according to points (a) thru (d) listed above, you increase the danger of backlashes.

**Lubrication** Figure 15 and 16 shows the places where the reel has to be oiled or greased periodically.

15



16



**Hint:** When ordering a spare part please insure that you quote the correct order number for your type of reel.

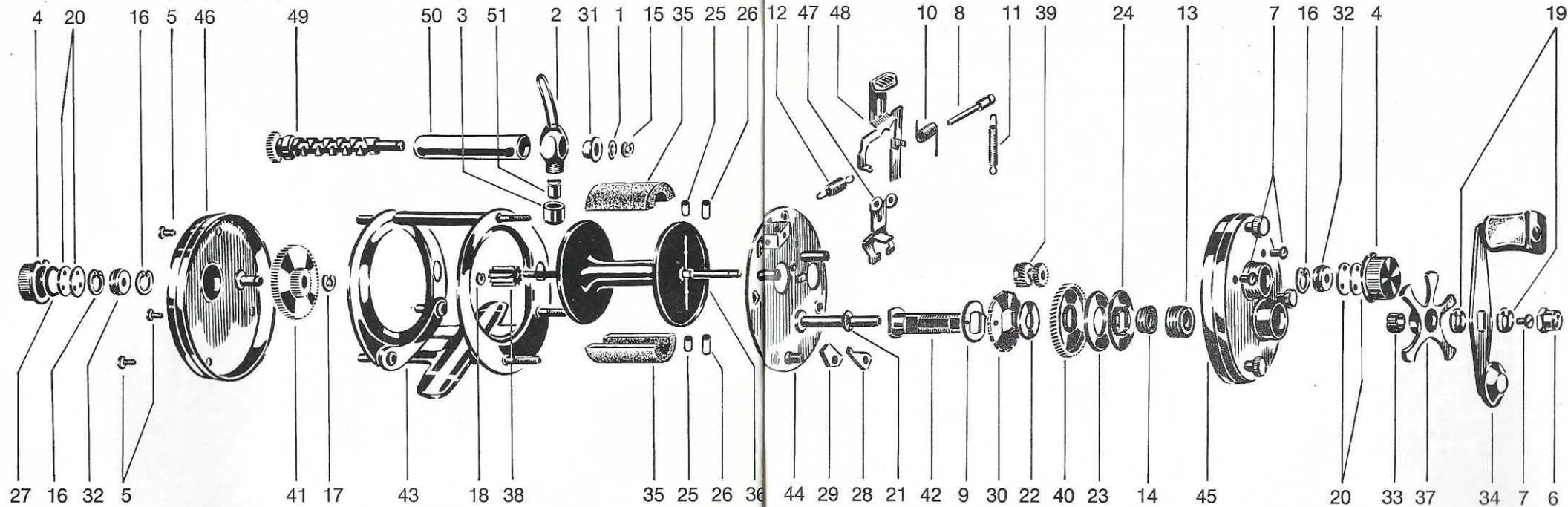


Fig. No.	Part No.	Technical Description of Spare Parts	Quick Champion				Fig. No.	Part No.	Technical Description of Spare Parts	Quick Champion			
			700	700 B	800	800 B				700	700 B	800	800 B
1	914 0006	lock washer	•	•	•	•	33	914 5233	carrying piece	•	•	•	•
2	914 5000	line-guide, comp.	•	•	•	•	34	914 5280	crank arm, comp.	•		•	
3	914 5010	cover nut	•	•	•	•	34	914 5281	crank arm, comp.		•		•
4	914 5011	cover nut	•	•	•	•	35	914 5375	cork rings	•			
5	914 5012	cylinder screw	•	•	•	•	35	914 5376	cork rings			•	•
6	914 5013	hat nut	•	•	•	•	36	914 5391	spool, comp.	•	•		
7	914 5030	screw M 3 x 5	•	•	•	•	36	914 5393	spool, comp.			•	•
8	914 5050	bearing pin	•	•	•	•	37	914 5470	brake nut, comp.	•	•	•	•
9	914 5052	control element	•	•	•	•	38	914 5502	pinion	•	•	•	•
10	914 5070	changing spring	•	•	•	•	39	914 5507	driving pinion	•		•	
11	914 5071	tension spring, along	•	•	•	•	39	914 5513	driving pinion		•		•
12	914 5072	tension spring, cross	•	•	•	•	40	914 5509	driving wheel	•		•	
13	914 5073	compression spring	•	•	•	•	40	914 5512	driving wheel		•		•
14	914 5074	conic frustrum spring	•	•	•	•	41	914 5511	tooth wheel pair	•	•	•	•
15	914 5090	safety disc	•	•	•	•	42	914 5540	brake spindle	•	•		
16	914 5091	safety disc	•	•	•	•	43	914 5562	case frame, comp.	•	•		
17	914 5092	safety disc	•	•	•	•	43	914 5563	case frame, comp.			•	•
18	914 5096	safety disc	•	•	•	•	44	914 5626	mount plate	•	•	•	•
19	914 5097	safety disc	•	•	•	•	45	914 5627	cover driving	•		•	
20	914 5121	slot plate	•	•	•	•	45	914 5628	cover driving		•		•
21	914 5123	washer (arched)	•	•	•	•	46	914 5620	cover	•			
22	914 5161	brake disc	•	•	•	•	46	914 5621	cover		•		
23	914 5162	brake disc	•	•	•	•	46	914 5633	cover			•	
24	914 5163	plane wheel	•	•	•	•	46	914 5634	cover				•
25	914 5180	centrifugal weight	•	•	•	•	47	914 5690	pinion lever	•	•	•	•
26	914 5181	centrifugal weight	•	•	•	•	48	914 5691	bolt	•	•	•	•
27	914 5182	joint ring	•	•	•	•	49	914 5770	cross worm, comp.	•	•		
28	914 5201	ratchet pawl	•	•	•	•	49	914 5771	cross worm, comp.			•	•
29	914 5202	wearing plate	•	•	•	•	50	914 5772	guide tube	•	•		
30	914 5203	ratchet wheel	•	•	•	•	50	914 5773	guide tube			•	•
31	914 5230	bearing	•	•	•	•	51	914 5774	slide stone	•	•	•	•
32	914 5231	slide bearing	•		•								
32	914 5480	ball bearing		•		•							



**And which line for fishing?** We recommend **GOLD DAMYL-Line** – the perfect line for "Quick-Fishing". GOLD DAMYL is unaffected by fresh and saltwater and can therefore be left wet on the reel. GOLD DAMYL is available in the following sizes:

Size (inches)	.005	.007	.009	.010	.011	.012	.015
	.017	.020	.022	.026	.028	.030	
Breaking strain (lbs)	2	4	6	8	10	15	
	20	25	30	40	50	60	





# Quick

Corporation  
of America

P.O. BOX 938

Costa Mesa, Calif. 92627

# GUARANTEE

This Quick Reel is guaranteed to be free from defects in material and workmanship not resulting from misuse or abuse. We will repair the reel or replace defective parts which may thus develop during a period of one year from date of sale to the original purchaser, at our option.

6102 Ch./674

Quality Product by D·A·M Western Germany