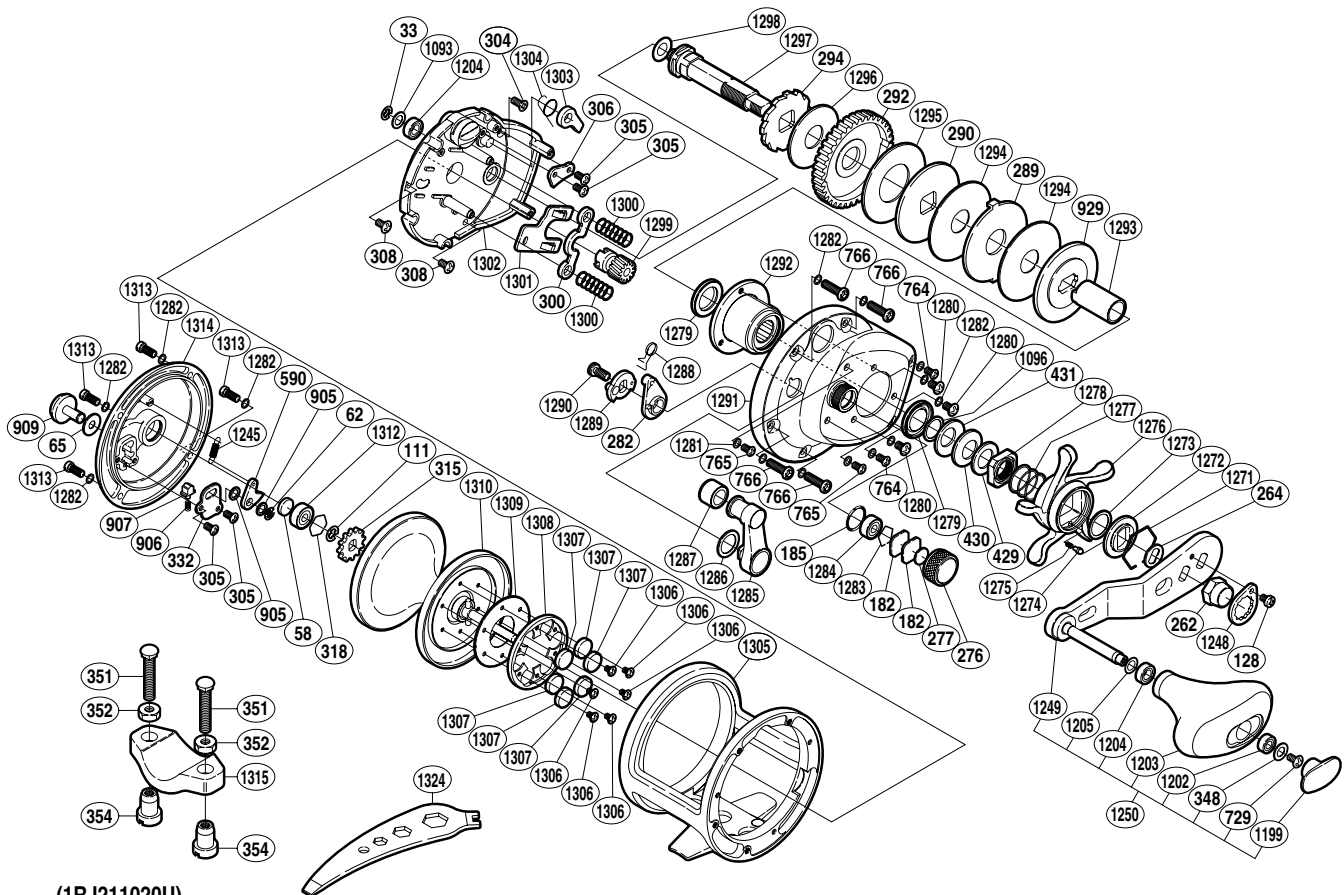


SHIMANO

TRINIDAD S A-RB

TN-20DC



(1RJ211020U)

| Part No. | Description | Part No. | Description | Part No. | Description |
|----------|--------------------------|----------|---------------------------|----------|-----------------------------|
| TGT0033 | E Lock | TGT0905 | Spacer | TGT1289 | Clutch Cam |
| TGT0058 | Spacer B | TGT0906 | Click Spring | TGT1290 | Screw |
| TGT0062 | E Lock | TGT0907 | Click Spring Holder | TGT1291 | Right Side Plate |
| TGT0065 | Spacer | TGT0909 | Click Button | TGT1292 | Drive Shaft Holder |
| TGT0111 | E Lock | TGT0929 | Key Washer | TGT1293 | Roller Clutch Inner Tube |
| TGT0128 | Screw | TGT1093 | Washer | TGT1294 | Drag Washer |
| TGT0182 | Cast Control Spacer | TGT1096 | Washer | TGT1295 | Drag Washer |
| TGT0185 | O Ring | TGT1199 | Handle Knob Seal | TGT1296 | Drag Washer |
| TGT0262 | Handle Nut | TGT1202 | Ball Bearing | TGT1297 | Drive Shaft |
| TGT0264 | Drive Shaft Shield | TGT1203 | Handle Knob | TGT1298 | Washer |
| TGT0276 | Cast Control Cap | TGT1204 | Ball Bearing | TGT1299 | Pinion Gear |
| TGT0277 | Cast Control Spacer | TGT1205 | Washer | TGT1300 | Yoke Spring |
| TGT0282 | Eccentric Cam Bushing | TGT1245 | Click Pawl Spring | TGT1301 | Clutch Plate |
| TGT0289 | Eared Washer | TGT1248 | Handle Nut Plate | TGT1302 | Set Plate Assembly |
| TGT0290 | Key Washer | TGT1249 | Handle Shank Assembly | TGT1303 | Anti-Reverse Pawl |
| TGT0292 | Drive Gear | TGT1250 | Handle Assembly | TGT1304 | Anti-Reverse Pawl Spring |
| TGT0294 | Anti-Reverse Ratchet | TGT1271 | Click Plate Retainer | TGT1305 | One-Piece Frame |
| TGT0300 | Yoke | TGT1272 | Star Drag Click Plate | TGT1306 | Screw |
| TGT0304 | Screw | TGT1273 | Washer | TGT1307 | Magnet |
| TGT0305 | Screw | TGT1274 | Click Pin | TGT1308 | Magnet Retainer |
| TGT0306 | Anti-Reverse Pawl Keeper | TGT1275 | Click Spring | TGT1309 | Magnetic Plate |
| TGT0308 | Screw | TGT1276 | Star Drag | TGT1310 | Spool Assembly |
| TGT0315 | Click Gear | TGT1277 | Star Drag Spring | TGT1312 | Ball Bearing |
| TGT0318 | Bearing Retainer | TGT1278 | Star Drag Nut | TGT1313 | Screw |
| TGT0332 | Click Spring Retainer | TGT1279 | Roller Clutch Water Proof | TGT1314 | Left Side Plate |
| TGT0348 | Washer | TGT1280 | Screw | | |
| TGT0429 | Washer | TGT1281 | Washer | | |
| TGT0430 | Coned Disc Spring (10L) | TGT1282 | Washer | | |
| TGT0431 | Coned Disc Spring (10H) | TGT1283 | Bearing Retainer | TGT0351 | Rod Clamp Bolt (accessory) |
| TGT0590 | Click Pawl | TGT1284 | Ball Bearing | TGT0352 | Rod Clamp Nut B (accessory) |
| TGT0729 | Screw | TGT1285 | Clutch Lever | TGT0354 | Rod Clamp Nut A (accessory) |
| TGT0764 | Screw | TGT1286 | Smother | TGT1315 | Rod Clamp (accessory) |
| TGT0765 | Screw | TGT1287 | Clutch Lever Protector | | |
| TGT0766 | Screw | TGT1288 | Clutch Spring | TGT1324 | Wrench (accessory) |

(190723)