

# International 10

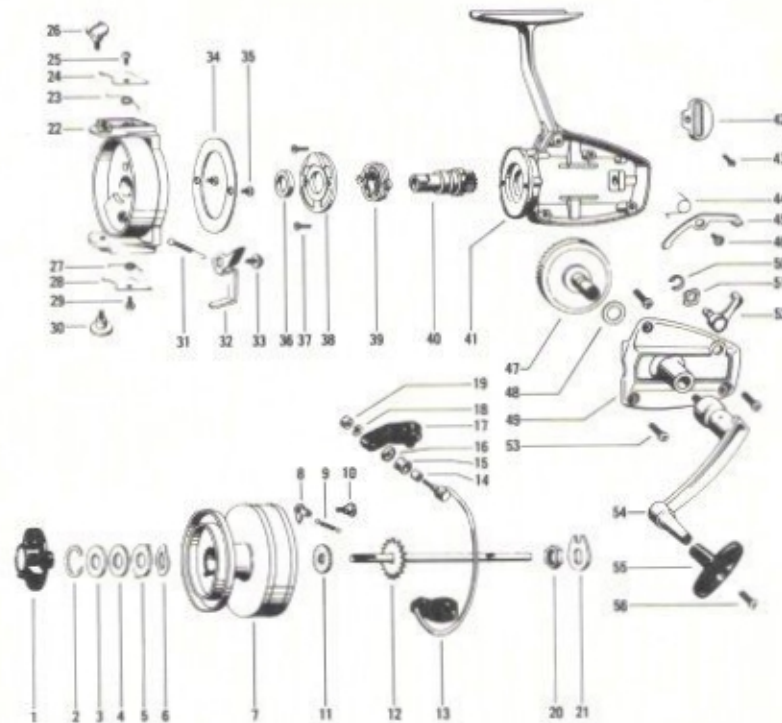


FIG. NO.	PART NO.	DESCRIPTION	LIST PRICE	FIG. NO.	PART NO.	DESCRIPTION	LIST PRICE
1	110-601	Brake Nut	.65	29	110-629	Case Cover Screw	.10
2	110-602	Safety Ring	.10	30	110-630	Bearing Screw	.35
3	110-603	Excenter Wheel	.10	31	110-631	Tension Spring	.15
4	110-604	Brake Disc	.10	32	110-632	Stop Lever	1.45
5	110-605	Driving Plate	.10	33	110-633	Lug Screw	.10
6	110-606	Spring-Washer	.15	34	110-634	Cover Plate	.80
7	110-607	Spool	4.95	35	110-635	Half Round Screw	.10
8	110-608	Ratchet	.20	36	110-636	Bushing	.15
9	110-609	Tension Spring	.10	37	110-637	Half Round Screw	.10
10	110-610	Lug Screw	.15	38	110-638	Plate	.95
11	110-611	Washer	.10	39	110-639	Ball Bearing	1.20
12	110-612	Axle, Cpl	1.00	40	110-640	Pinion	.75
13	110-613	Bail Arm Cpl	2.00	41	110-641	Housing	3.85
14	110-614	Bushing	.30	42	110-642	Guide Piece	.15
15	110-615	Line Guide	.60	43	110-643	Screw	.10
16	110-616	Washer	.30	44	110-644	Straight Spring	.15
17	110-617	Angle Lever	.30	45	110-645	Stop Lever	.30
18	110-618	Spring Washer	.10	46	110-646	Lug Screw	.10
19	110-619	Plane Nut	.25	47	110-647	Driving Wheel	1.10
20	110-620	Hexagon Nut	.10	48	110-648	Washer	.10
21	110-621	Driving Plate	.15	49	110-649	Cover Cpl	1.75
22	110-622	Flange	3.25	50	110-650	Safety Disc	.10
23	110-623	Changing Spring	.15	51	110-651	Spring Washer	.15
24	110-624	Cover	.40	52	110-652	Lever F. Anti-Reverse Clutch	.40
25	110-625	Case Cover Screw	.10	53	110-653	Half Round Screw	.10
26	110-626	Bearing Screw	.35	54	110-654	Crank Arm	1.95
27	110-627	Changing Spring	.15	55	110-655	Handle Grip	.30
28	110-628	Cover	.40	56	110-656	Grip Screw	.10