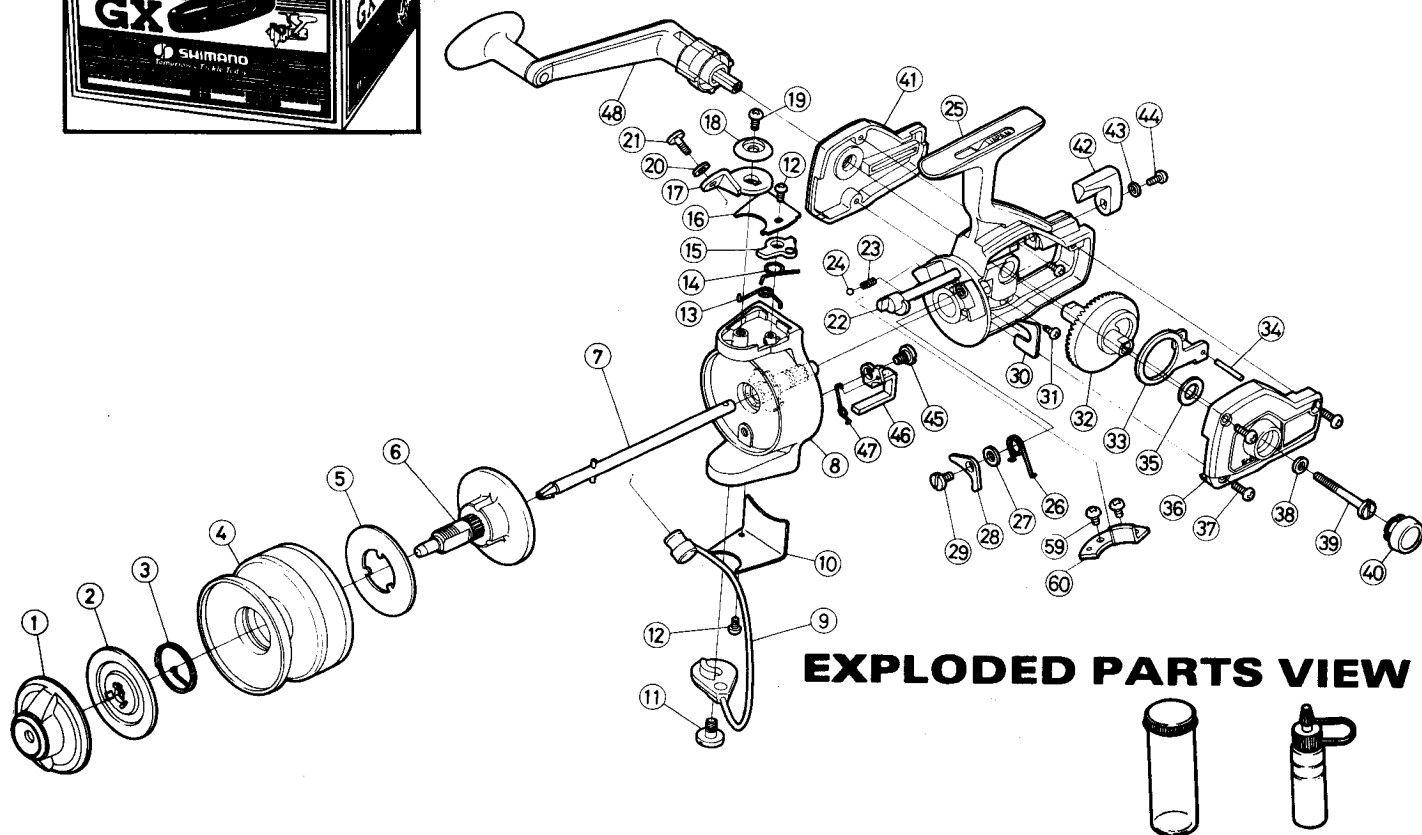


# SHIMANO

## REPAIR MANUAL NO. GX-100

Shimano American Corp., 205 Jefferson Road  
Parsippany, New Jersey 07054



### EXPLODED PARTS VIEW

## PARTS LIST

| PART# | DESCRIPTION         | PRICE | PART# | DESCRIPTION             | PRICE | PART# | DESCRIPTION              | PRICE |
|-------|---------------------|-------|-------|-------------------------|-------|-------|--------------------------|-------|
| 1     | Drag Adjusting Knob | 2.60  | 18    | Bail Mount Cover        | .30   | 34    | Oscillation Guide Pin    | .15   |
| 2     | Drag Disk           | .55   | 19    | Bail Mount Screw        | .30   | 35    | Thrust Washer            | .15   |
| 3     | Click Spring        | .25   | 20    | Bail Screw Washer       | .15   | 36    | Left Side Plate          | 1.75  |
| 4     | Spool Shell         | 11.30 | 21    | Bail Wire Screw         | .70   | 37    | Left Side Plate Screw    | .15   |
| 5     | Base Drag Washer    | .15   | 22    | Anti Reverse Shaft      | 1.50  | 38    | Handle Screw Washer      | .15   |
| 6     | Spindle             | 3.30  | 23    | Shaft Detent Spring     | .15   | 39    | Handle Retainer Screw    | 1.50  |
| 7     | Axle                | 2.30  | 24    | Detent Ball             | .15   | 40    | Dust Cap                 | .30   |
| 8     | Rotor               | 6.00  | 25    | Housing                 | 8.75  | 41    | Right Side Plate         | 1.75  |
| 9     | Bail Wire           | 3.45  | 26    | Anti Reverse Dog Spring | .25   | 42    | Anti Reverse Lever       | .30   |
| 10    | Trip Lever Cover    | .55   | 27    | Anti Reverse Dog Spacer | .15   | 43    | Lever Screw Lock Washer  | .15   |
| 11    | Bail Wire Screw     | .55   | 28    | Anti Reverse Dog        | .75   | 44    | Anti Reverse Lever Screw | .15   |
| 12    | Cover Screw         | .15   | 29    | Anti Reverse Dog Screw  | .40   | 45    | Trip Lever Screw         | .25   |
| 13    | Bail Spring         | .20   | 30    | Pinion Lock             | .15   | 46    | Trip Lever               | 1.60  |
| 14    | Fold Latch Spring   | .30   | 31    | Right Sideplate Screw   | .15   | 47    | Trip Lever Spring        | .25   |
| 15    | Bail Fold Latch     | .90   | 32    | Drive Gear              | 1.50  | 48    | Sa-Fold Handle           | 9.50  |
| 16    | Bail Spring Cover   | .35   | 33    | Oscillation Guide       | .75   | 59    | Trip Cam Screw           | .15   |
| 17    | Bail Mount          | 1.25  |       |                         |       | 60    | Trip Cam                 | .95   |

Prices and specifications subject to change without notice.