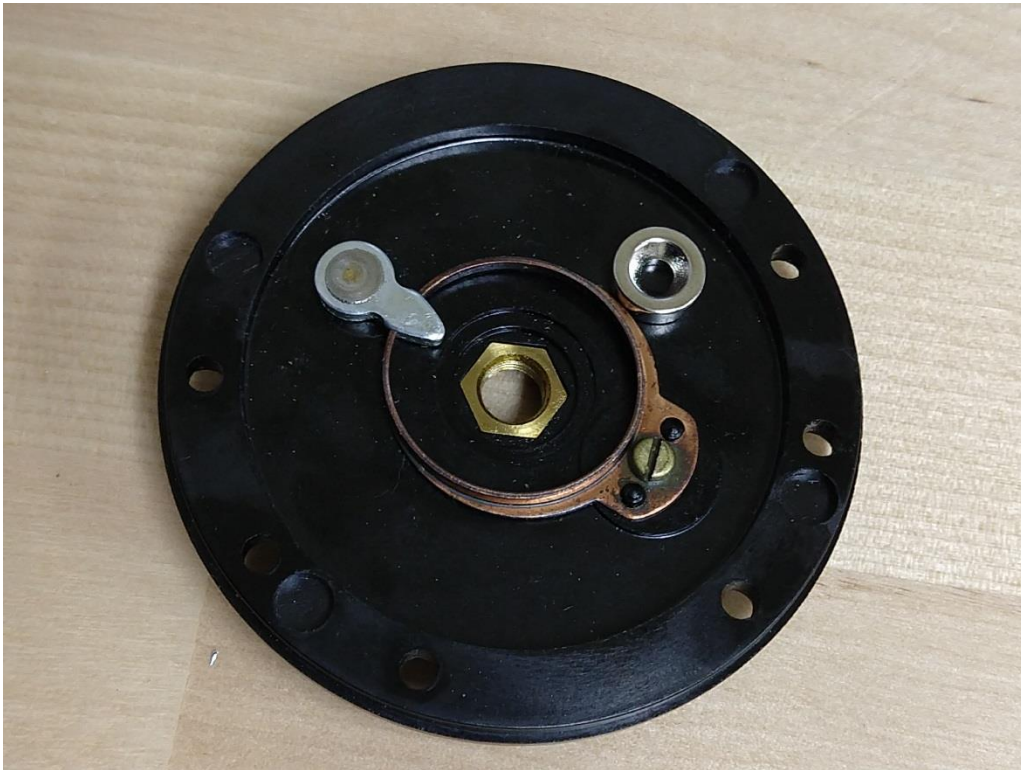


Adjustable Mag Kit Installation

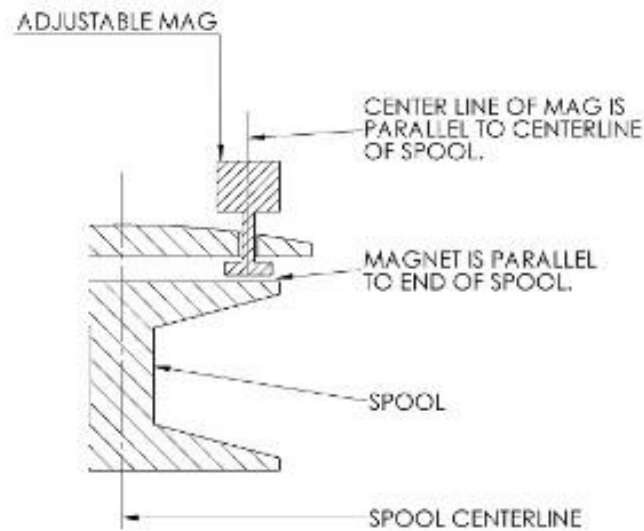


1. Disassemble the unit by loosening the set screw in the aluminum knob and unscrewing the knob from the mag shaft. Then unscrew the mag shaft from the mounting screw. Finally, remove the screw holding the magnet to the mag shaft.
2. Determine the position of the magnet. **This is the most important step so take your time and double check that the position is correct.**



Place the magnet inside the tail plate of the reel to see where the best clearance is. I like to try to position it toward the upper front of the reel so it is out of the way for casting and palming the reel. Ensure clearance to the clicker spring and the inside profile of the spool. One trick is to put a ball of clay or playdoh over the magnet and then install the spool to see the profile pressed into it.

3. Once the location is marked, drill a 1/8" pilot hole through the tail plate. **Be sure to keep the hole parallel to the spool center line (perpendicular to the flat or inner side of the tail plate).**



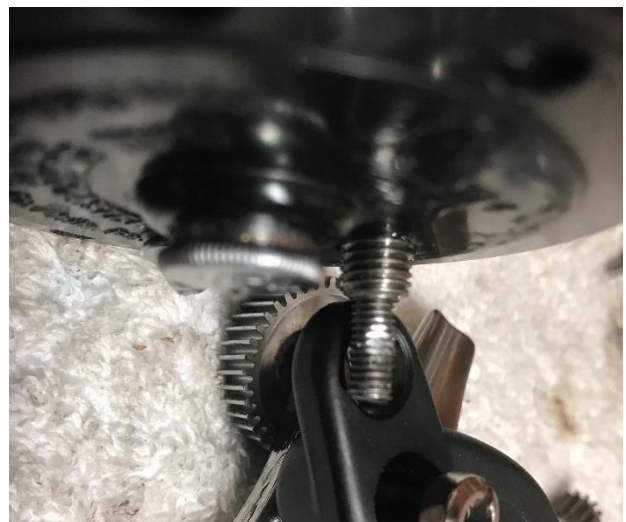
4. Once the pilot hole is drilled, drill through it again with drill size 1 (0.272").
5. Tap the hole with a 5/16-24 tap. Again, be careful to keep the tap parallel to the spool center line.
6. Once the hole is threaded, install the mounting screw with the shoulder on the inside of the tail plate. Do not use any adhesive yet. Fully assemble the mag kit and reel to ensure clearance. Once proper installation is confirmed, disassemble and reinstall the mounting screw with epoxy.



7. After the epoxy has dried, reinstall the parts and put a drop of medium thread locker on the magnet mounting screw.



8. Assemble the reel and adjust the magnet all the way in and out to determine the adjustment of the aluminum knob while getting full travel of the magnet. Once the adjustment of the knob has been set, mark where the set screw makes contact with the adjustment screw and use a small file to create a flat spot for the set screw to engage. (An alternate option is to use a small drop of light/medium thread locker)



9. Your reel is now magged and can be fine-tuned for many different conditions and lure weights to get the most out of your cast with the least amount of overrun.

NOTE: This device will not compensate for poor technique or abilities. It will not stop the spool when the bait/lure hits the water. It is simply to reduce overrun and aid in consistency and confidence while casting a conventional reel. ENJOY!