

Cabela's Depthmaster II Tutorial (DM30/DM45)

Part 1: Disassembly to the Reel Frame

The Cabela's® Depthmaster™ II reels shown in this tutorial were purchased new in 2005/2006 and were later upgraded with a Carbon Fiber Drag Washer set by Dragmasters™ and a Power Handle. Both the CF washer set and Power Handle were purchased from www.tunasreeltroubles.com which also sells replacement parts for Cabela's reels. The metal drag washers were polished and flattened when the CF washer upgrade was installed. The undergear washer was upgraded with a Carbontex #10 CF Washer from www.smoothdrag.com since it was not included in the Dragmaster CF washer set (in 2012). The Ball Bearing shields were removed during a prior disassembly and cleaning.

Depthmaster reels are apparently manufactured by Okuma® Fishing Tackle (the part numbers on the schematic are Okuma part numbers). The original (Rulon®?) drag washers performed poorly (jerky), while the original handle was poorly balanced and too short to get leverage on the fish. After the upgrades the drag is smooth and the reels are a pleasure to use. These particular reels are used with 18 lb. leadcore line for freshwater fishing only (kokanee salmon, lake trout, striper hybrids (wipers), and walleyes).

In Part 1 of the tutorial the side plates are removed and the levelwind mechanism is disassembled.

The DM30 and DM45 assembly and disassembly procedures are identical. The DM30a and DM45a are 98% the same (they are shipped from the factory with "Carbonite" carbon fiber drag washers.) The DM15, DM15a, DM20, and DM20a are 95% the same as the DM30 and DM45 reels. Several photos of DM30a reel components are included in this tutorial to show the differences.

Digital cameras are your friend. Take photos as you disassemble the reel if it differs from what is shown here. The photos should make it easier to put everything back together later. Use this tutorial at your own risk - see the disclaimer on the last page of this document.



Original Handle on Depthmaster II reel.(DM30)

Cabela's Depthmaster II Tutorial (DM30/DM45)



Power Handle on Depthmaster II reel. (DM30)

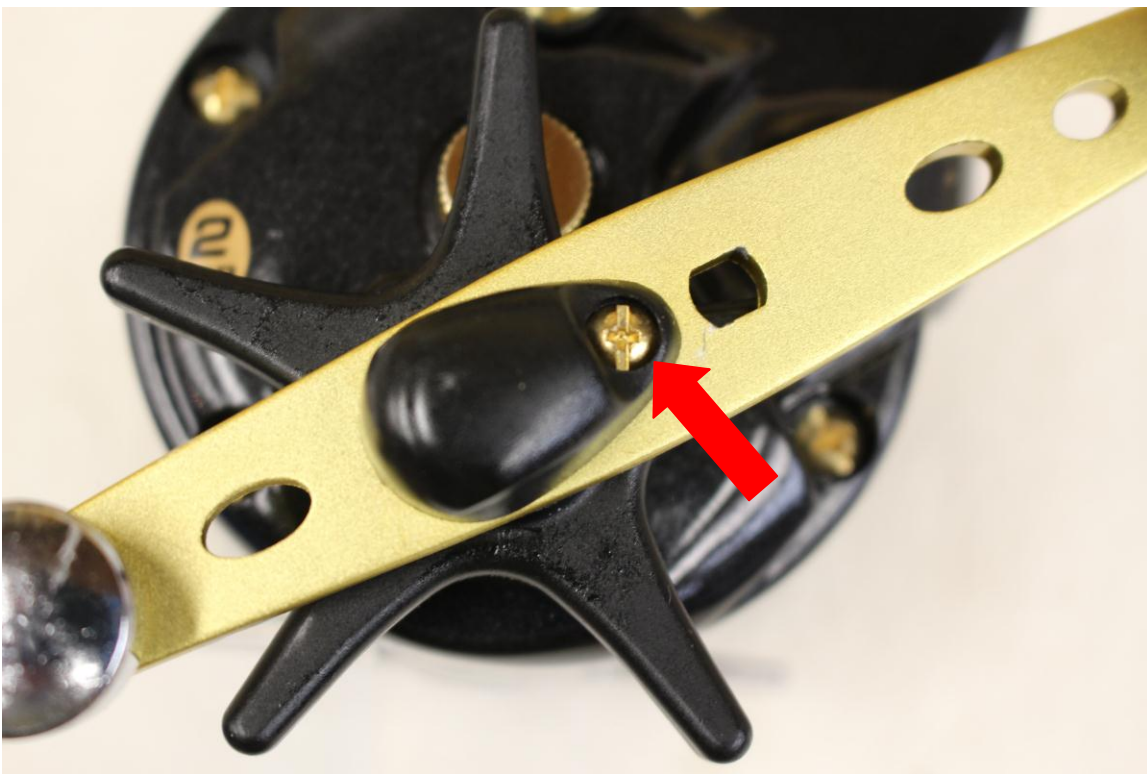


Side views of the original Cabela's handle (top) and the Power Handle (bottom) with the mounting holes aligned with the 2 inch mark on the ruler.

Cabela's Depthmaster II Tutorial (DM30/DM45)

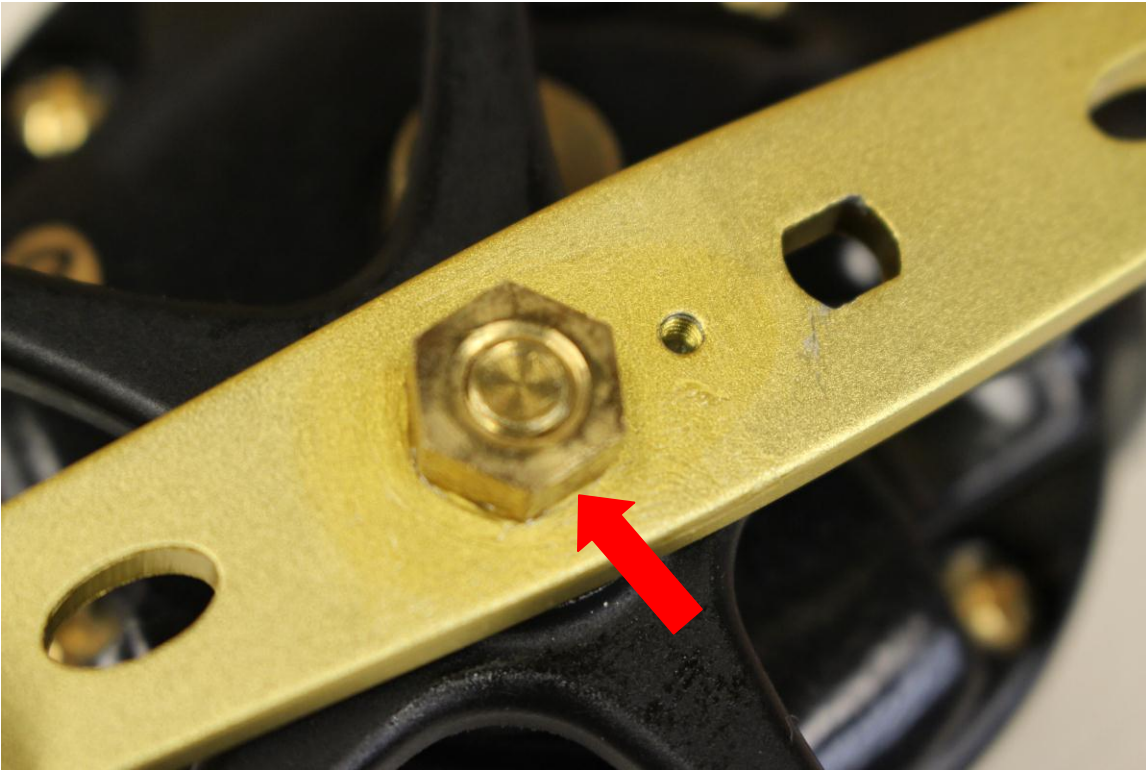


Top view of Depthmaster II reel before disassembly.



Remove Handle Nut Cover screw and Cover

Cabela's Depthmaster II Tutorial (DM30/DM45)

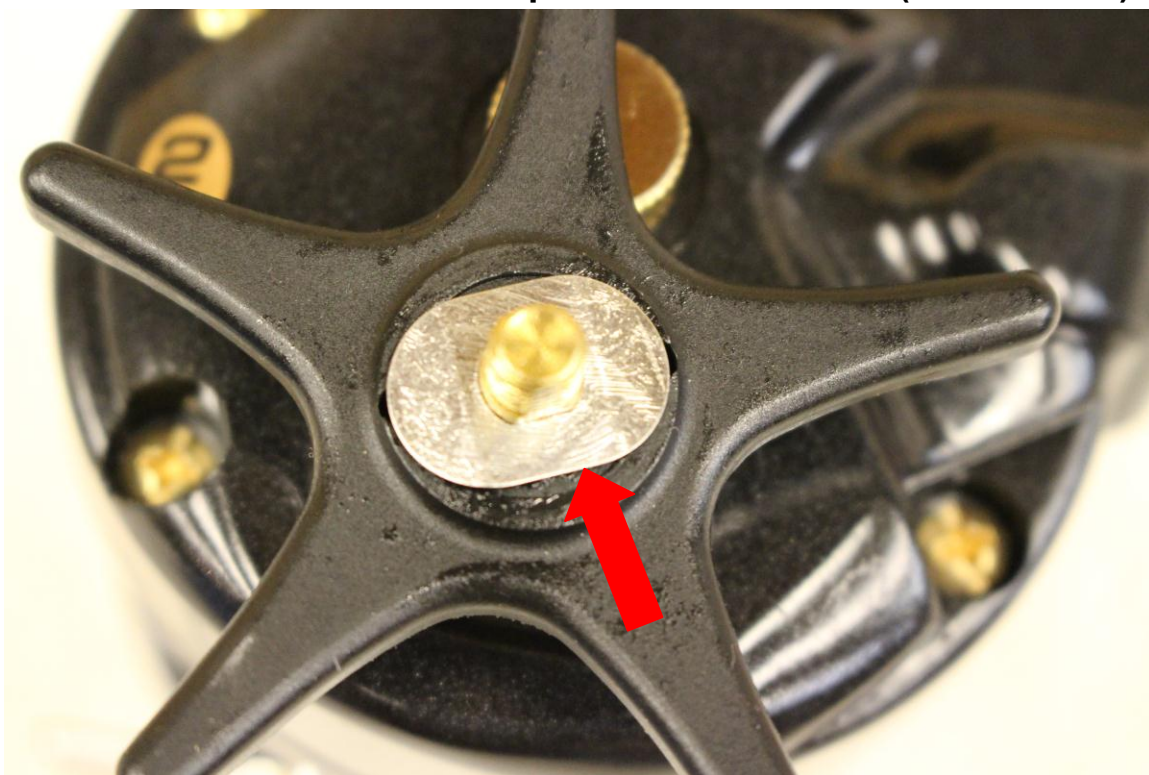


Remove Handle Nut using a 10mm box end wrench.



Remove Handle

Cabela's Depthmaster II Tutorial (DM30/DM45)

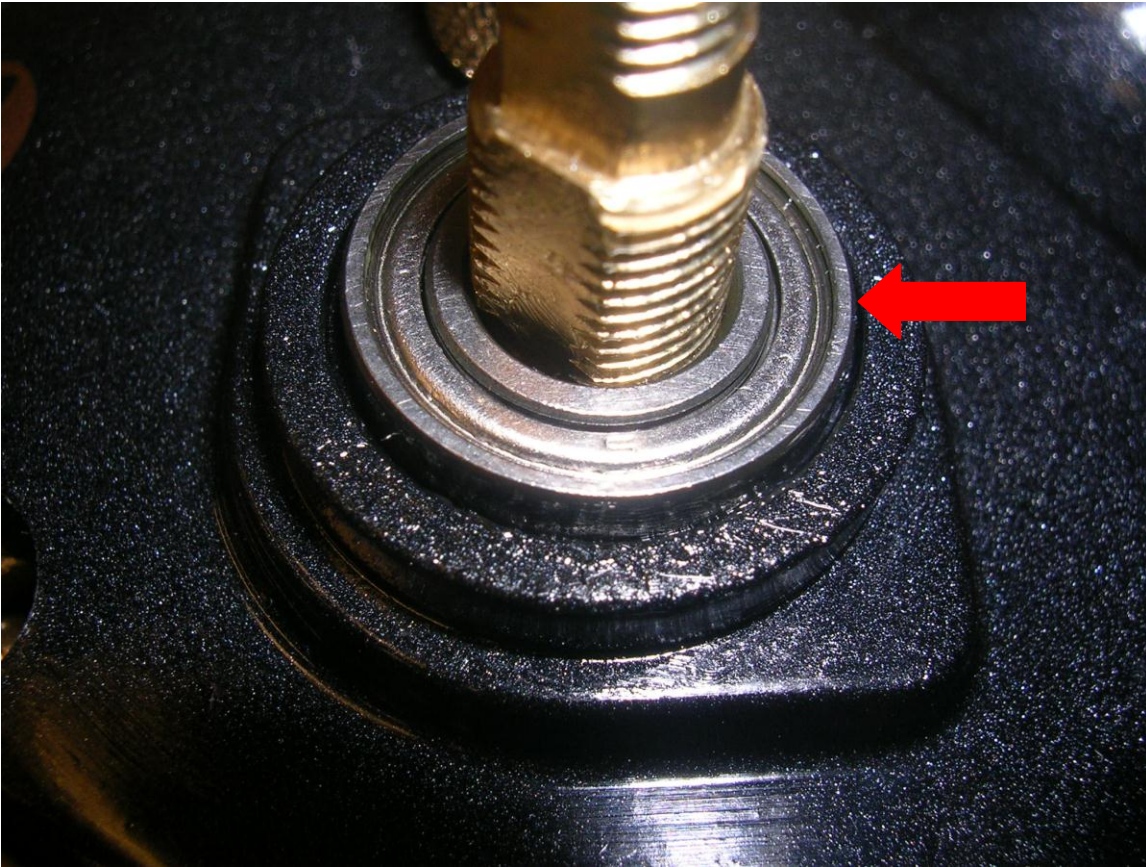


Remove Tension Washer

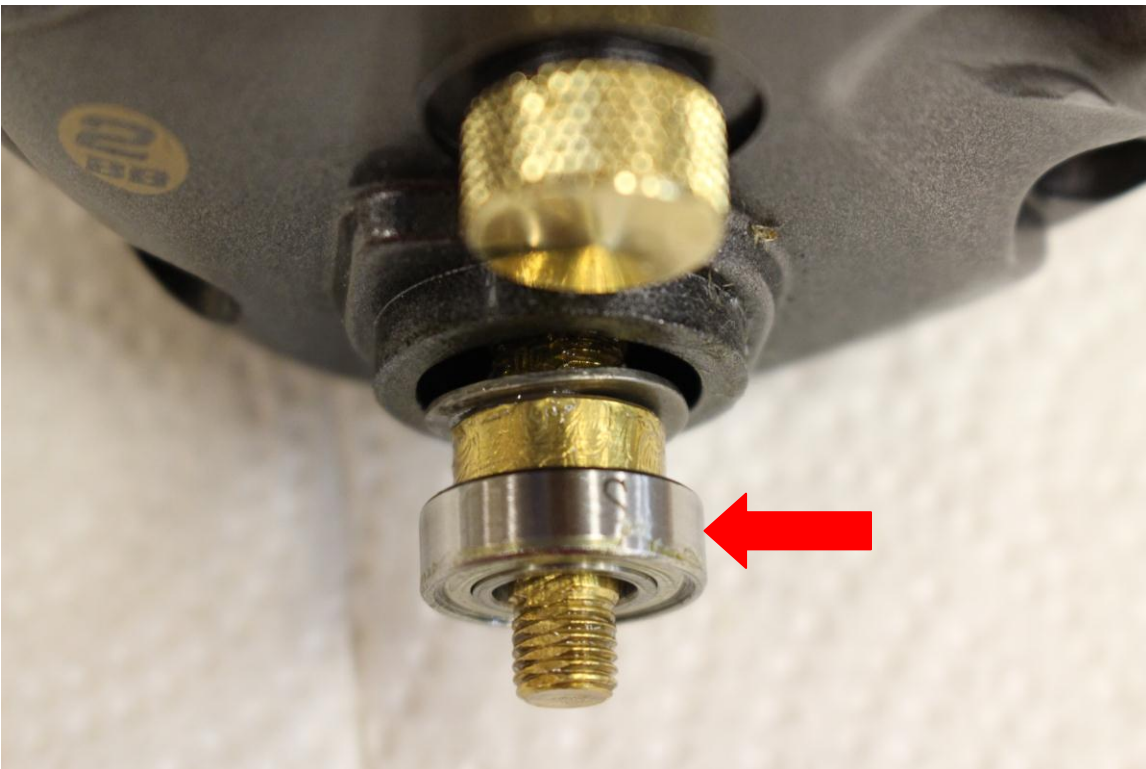


Remove Star Drag to expose the Ball Bearing.

Cabela's Depthmaster II Tutorial (DM30/DM45)

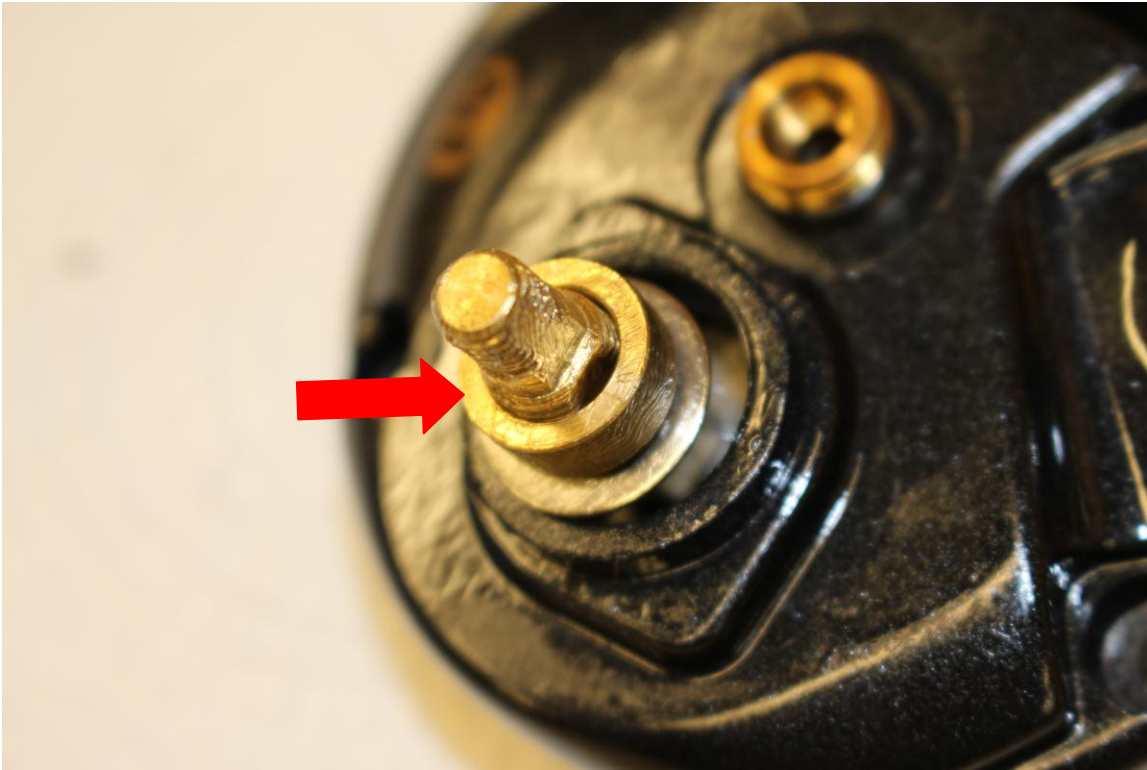


The Ball Bearing will most likely slide out easily at this point if you tap on the side plate, exposing the Drive Gear Shaft Bushing. If not, it can be removed later (when the hold plate is removed).

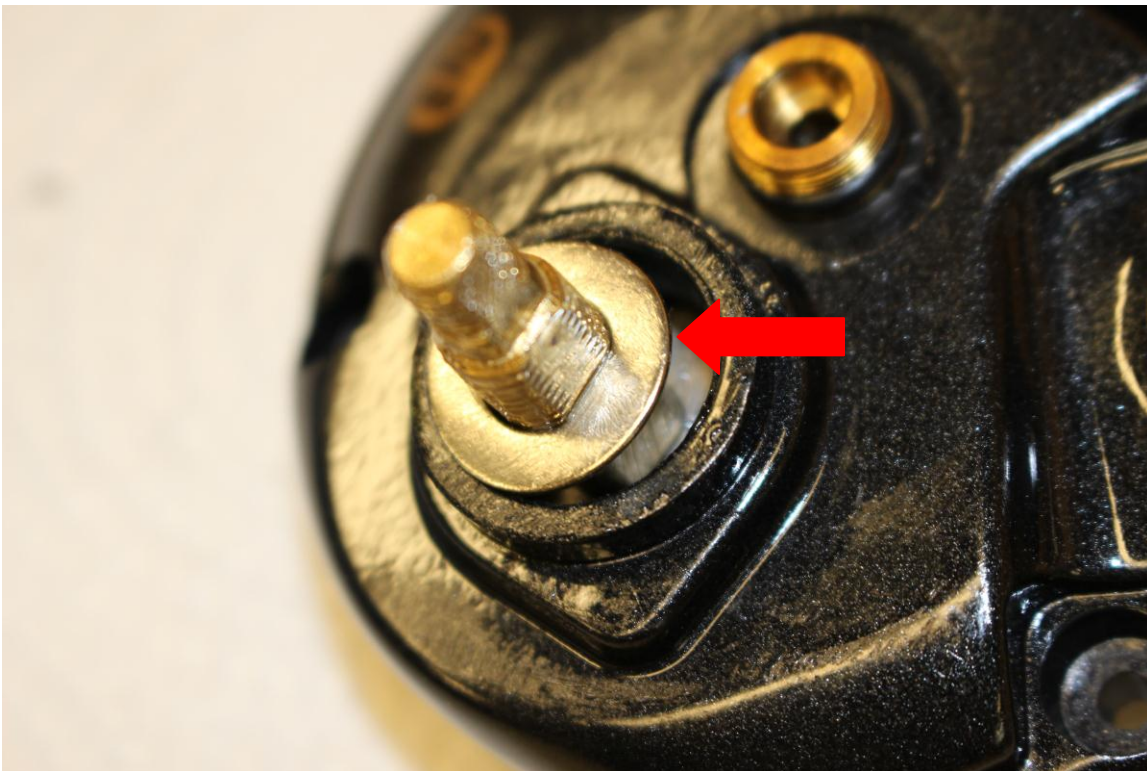


Slide the Ball Bearing off the Drive Gear Shaft.

Cabela's Depthmaster II Tutorial (DM30/DM45)



Remove the Drive Gear Shaft Bushing.

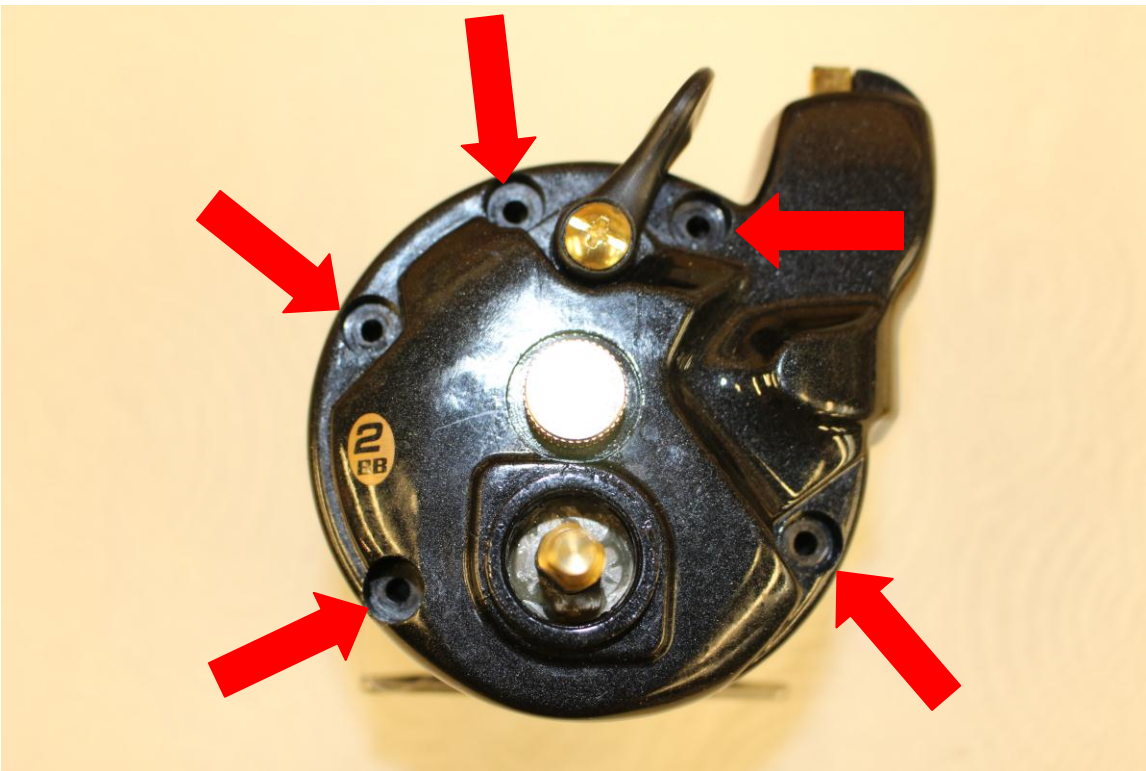


Remove the Drag Spring Washer.

Cabela's Depthmaster II Tutorial (DM30/DM45)

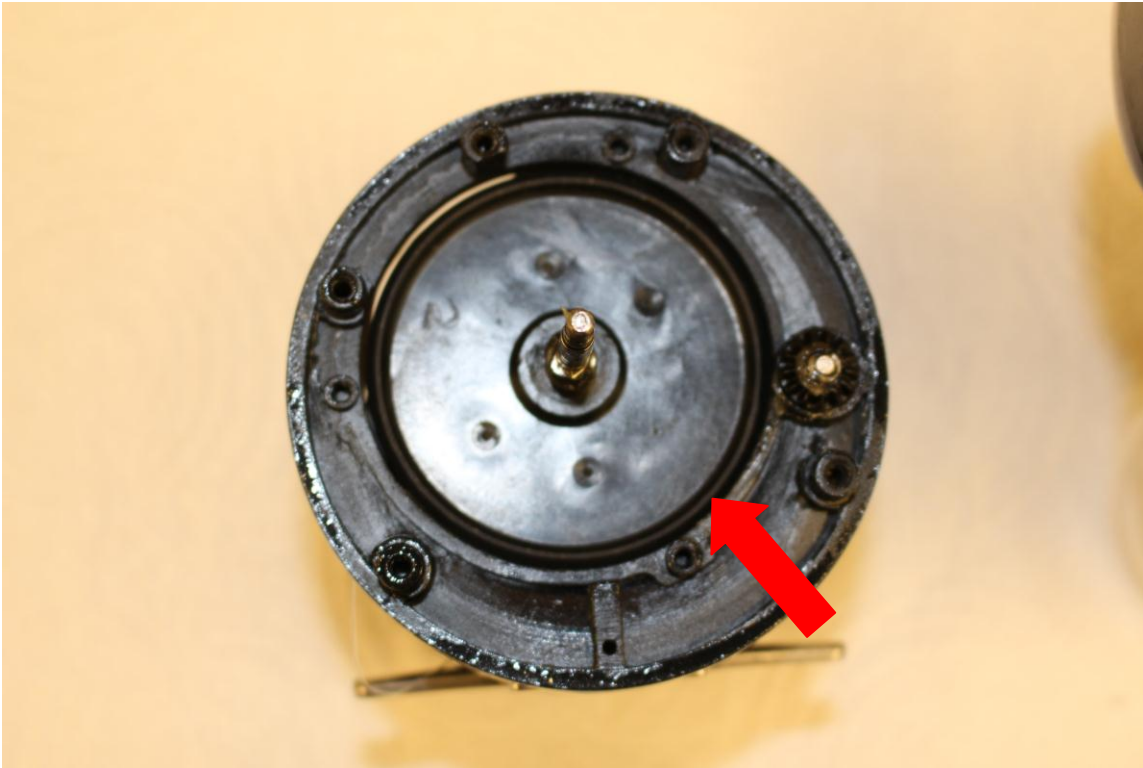


Here are the parts we have removed so far, in the order they were removed.

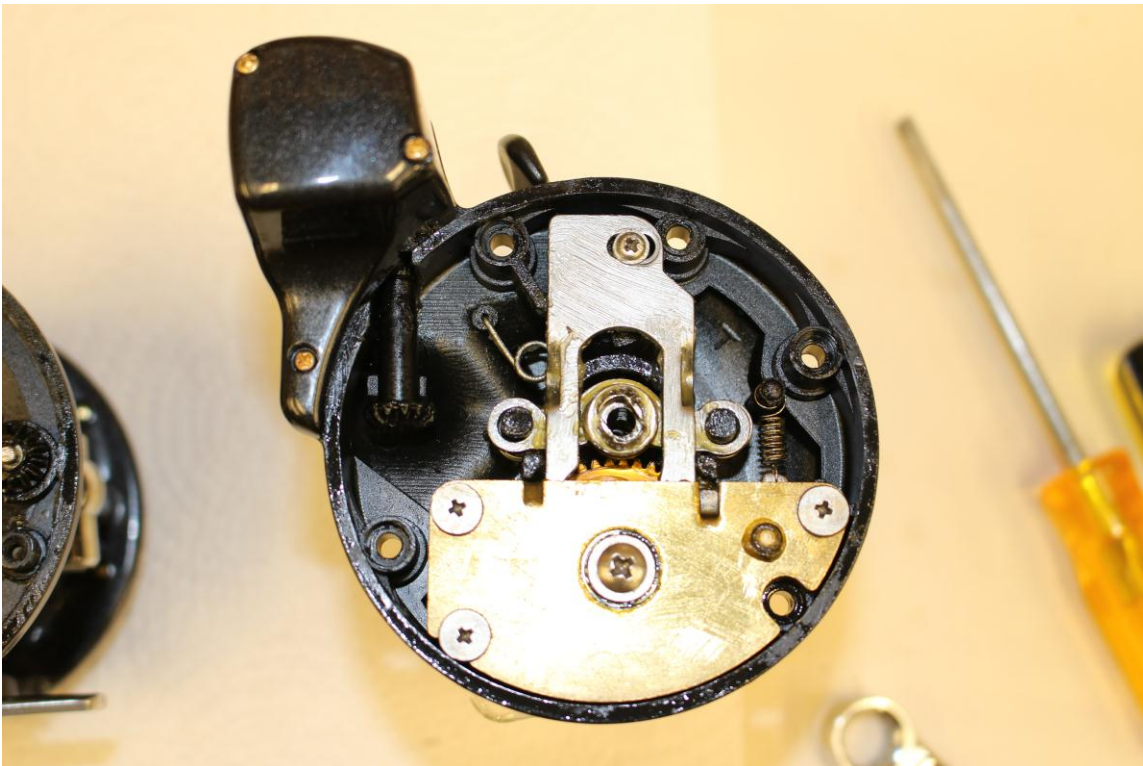


Remove the 5 screws from the Right Side Plate. Note all 5 screws are the same length.

Cabela's Depthmaster II Tutorial (DM30/DM45)

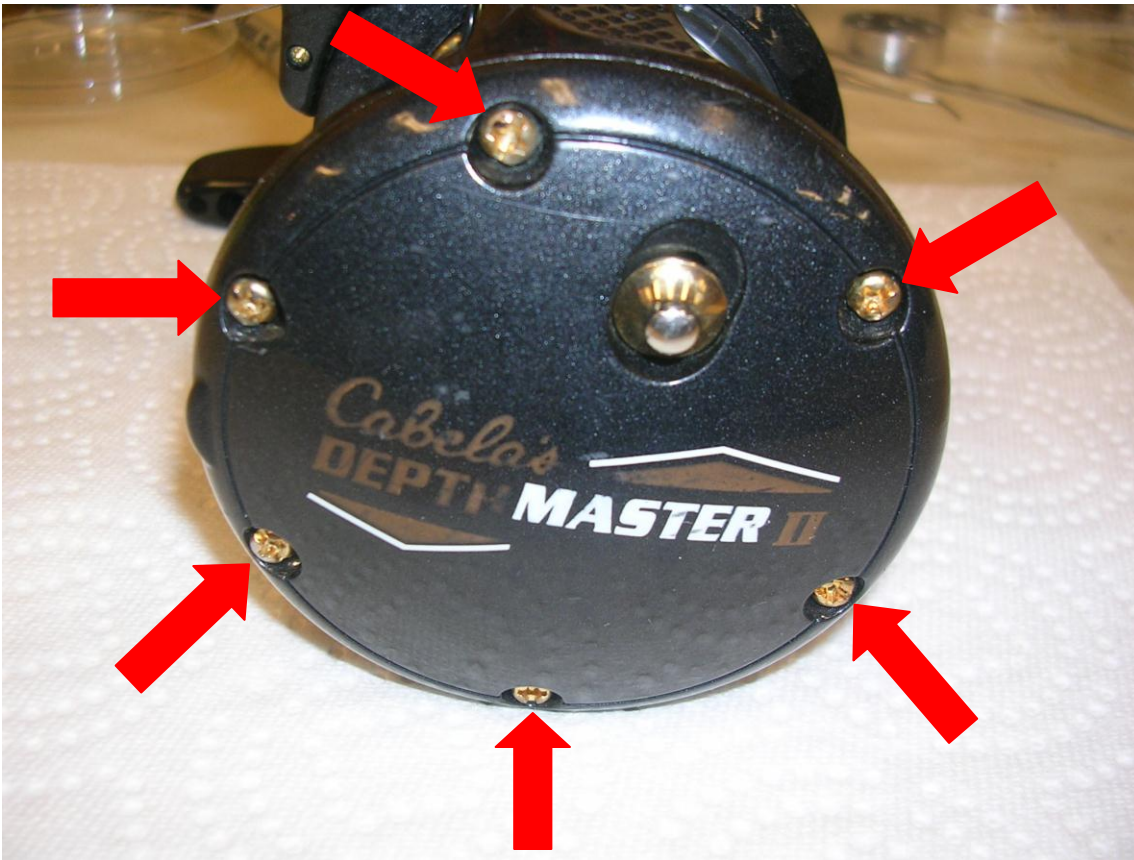


With the side plate removed the right end of the spool is exposed. The spool is removed by lifting it out of the reel frame (a.k.a. Main Body Assembly).

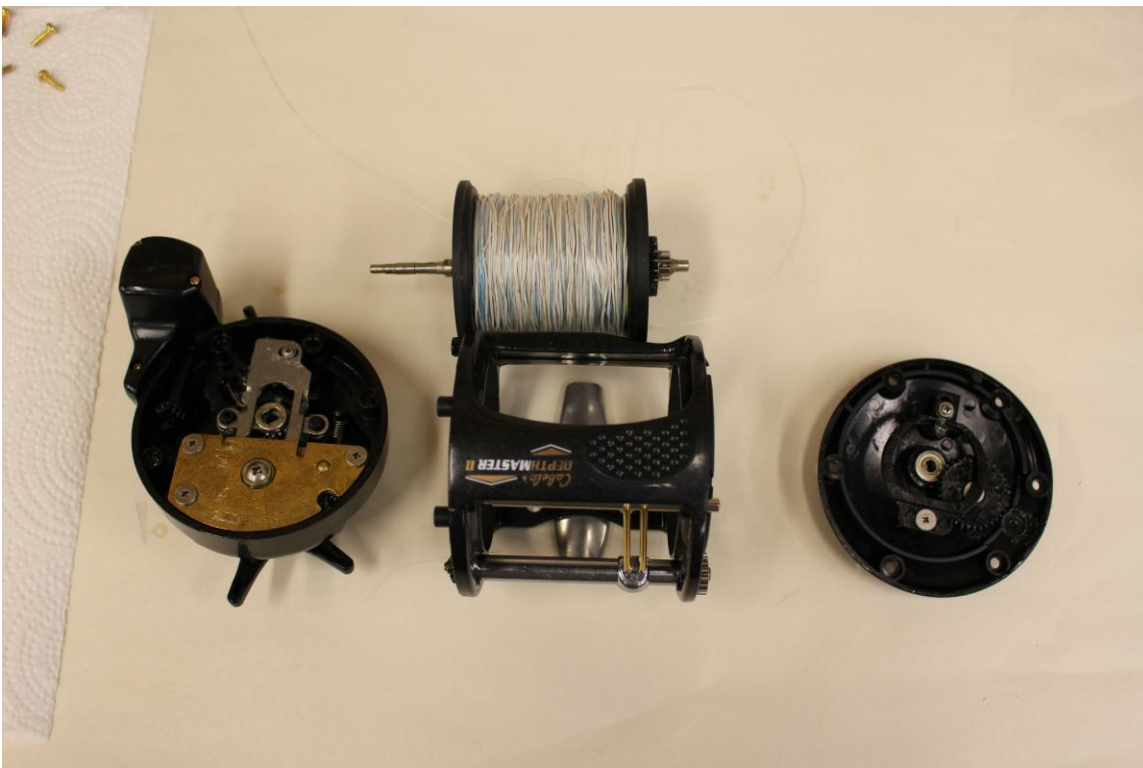


The inside of the Right Side Plate is shown here.

Cabela's Depthmaster II Tutorial (DM30/DM45)



Remove the screws from the Left Side Plate. Note that the 2 screws closest to the Levelwind mechanism are shorter than the others. The DM30 has 5 screws; the DM45 has 6 screws.

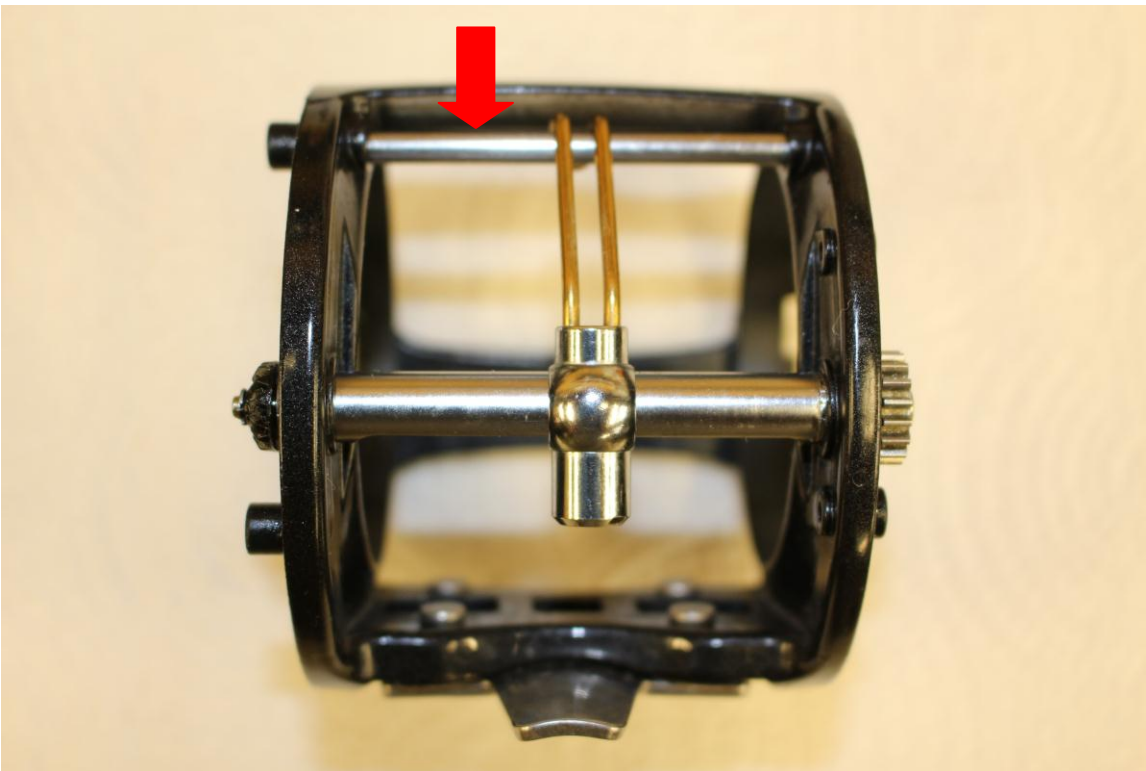


The side plates, spool, and frame are shown after disassembly into subassemblies. (DM45)

Cabela's Depthmaster II Tutorial (DM30/DM45)

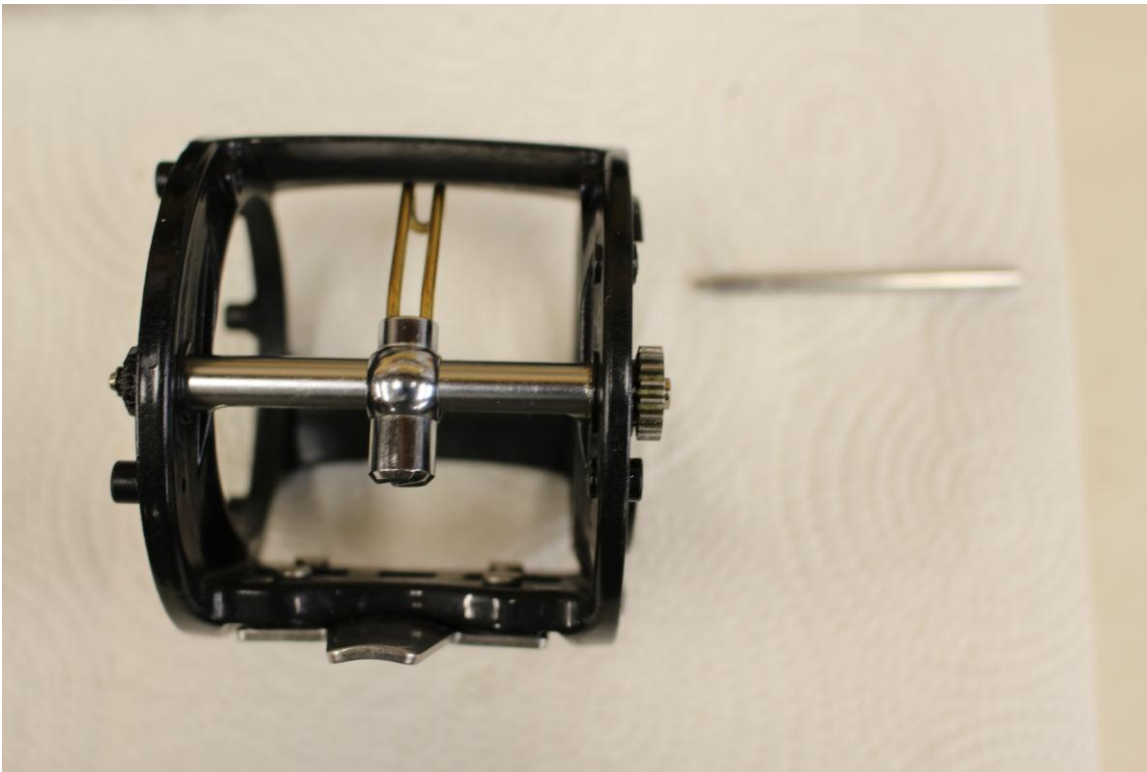


The reel frame viewed from the left side, showing the Levelwind mechanism.

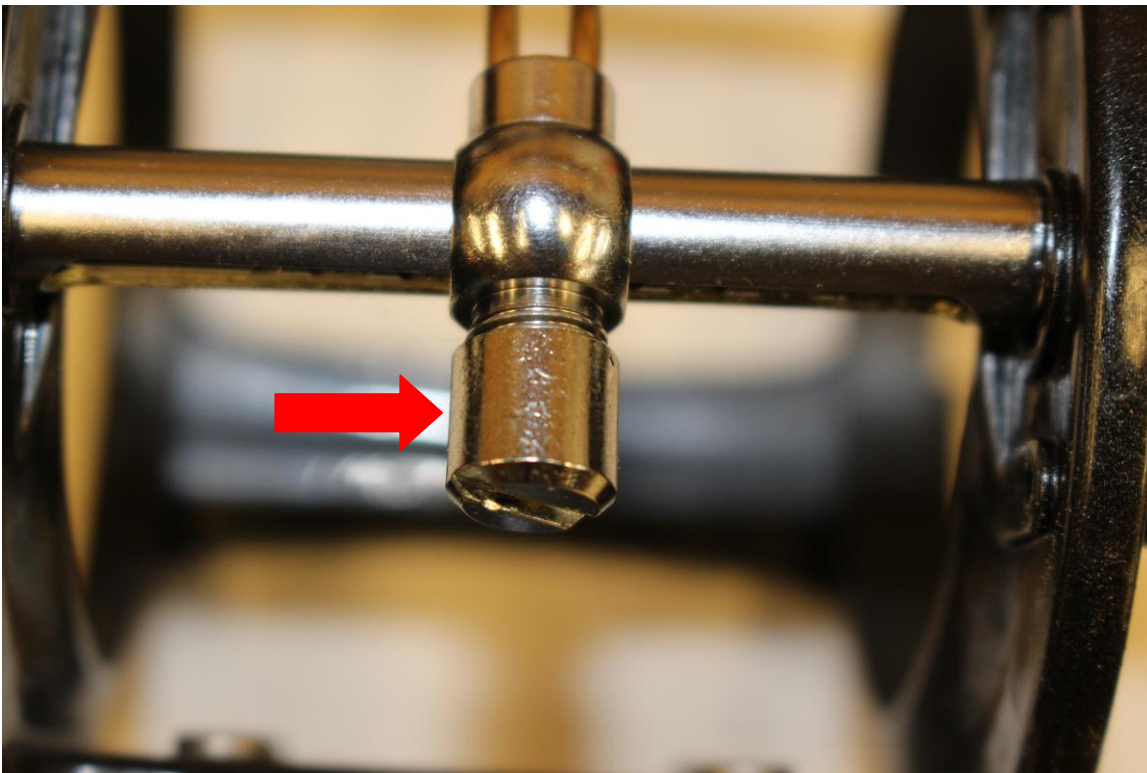


The reel frame viewed from the front, showing the Levelwind mechanism. To remove the Stabilizer Bar (at the top of the Line Guide Assembly) slide it to the right and out of the frame.

Cabela's Depthmaster II Tutorial (DM30/DM45)

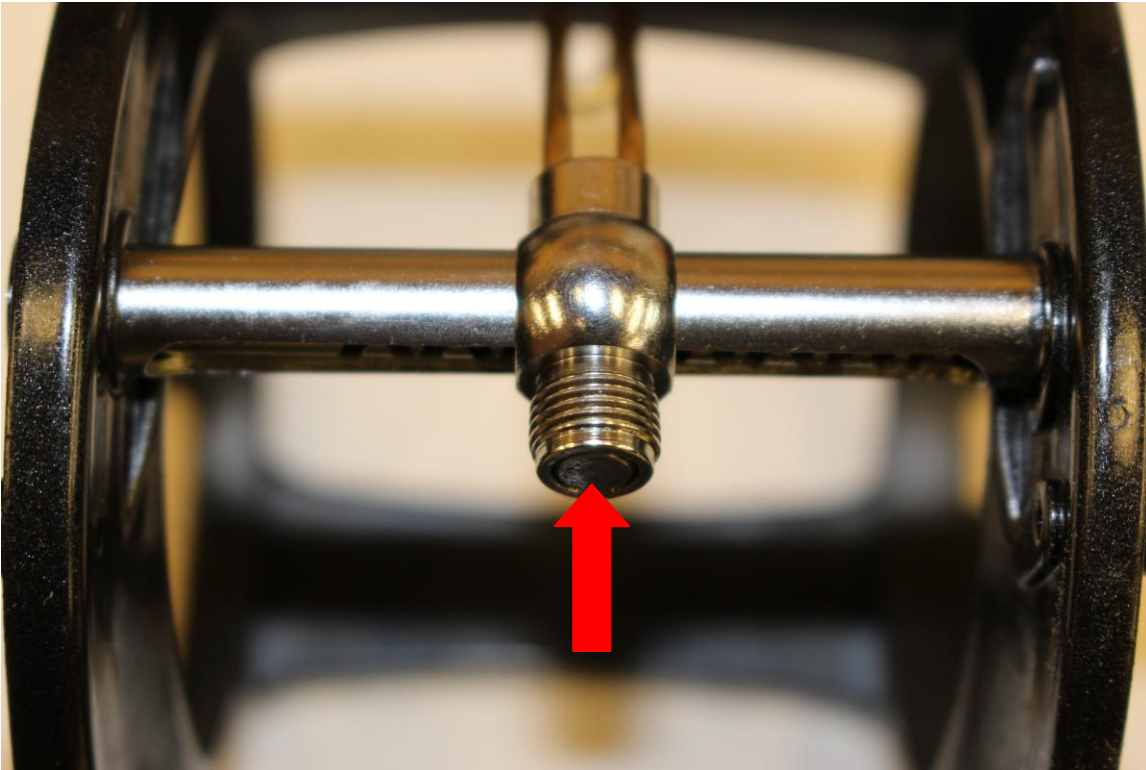


The reel frame viewed from the front, showing the Stabilizer Bar removed.

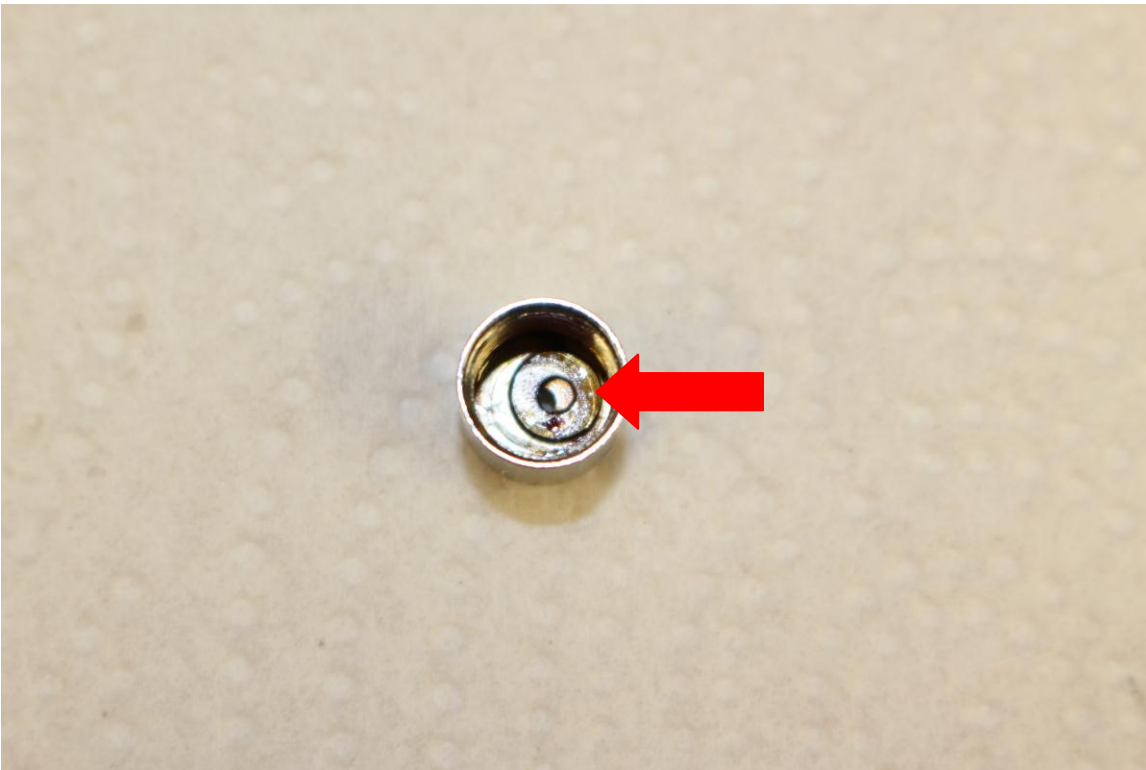


This is a good time to remove the Pawl Cap (using a large screwdriver). Turn the cap counterclockwise.

Cabela's Depthmaster II Tutorial (DM30/DM45)

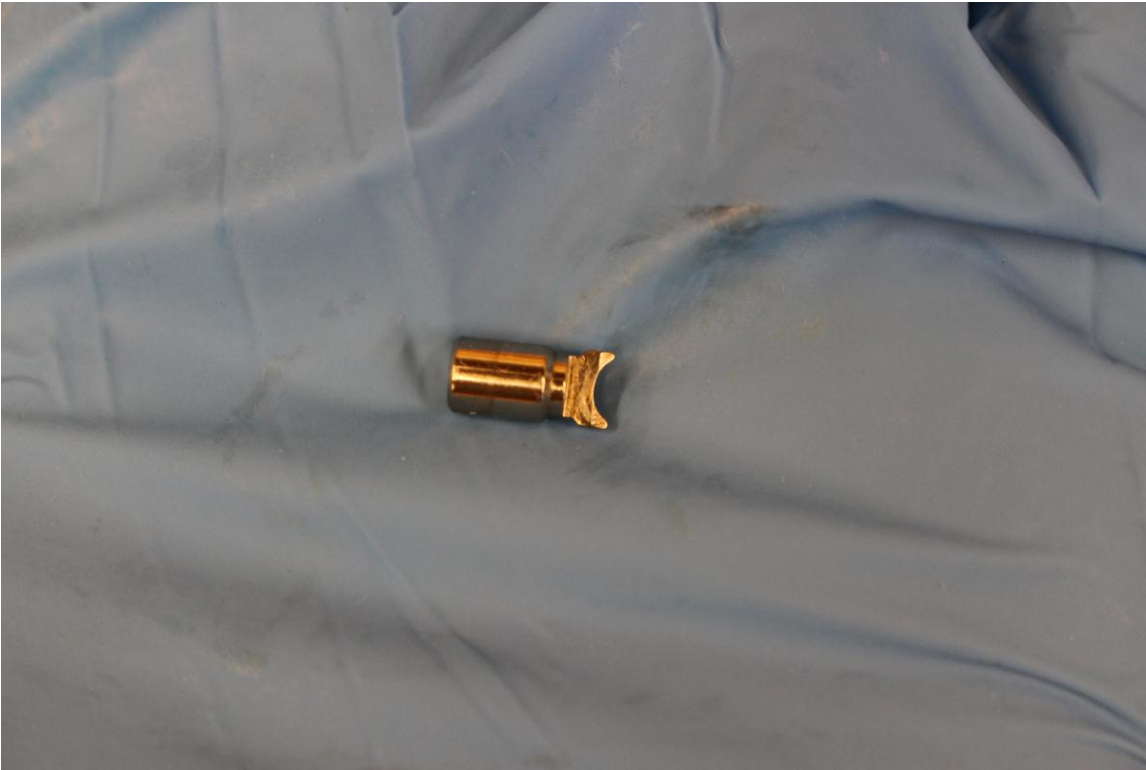


With the Pawl Cap removed the Line guide Pawl is exposed. Note on the DM30a and DM45a there is a small washer on the bottom of the Pawl but on the DM30 and DM45 there are no washers. The Pawl Washer typically sticks to the inside of the Pawl Cap.

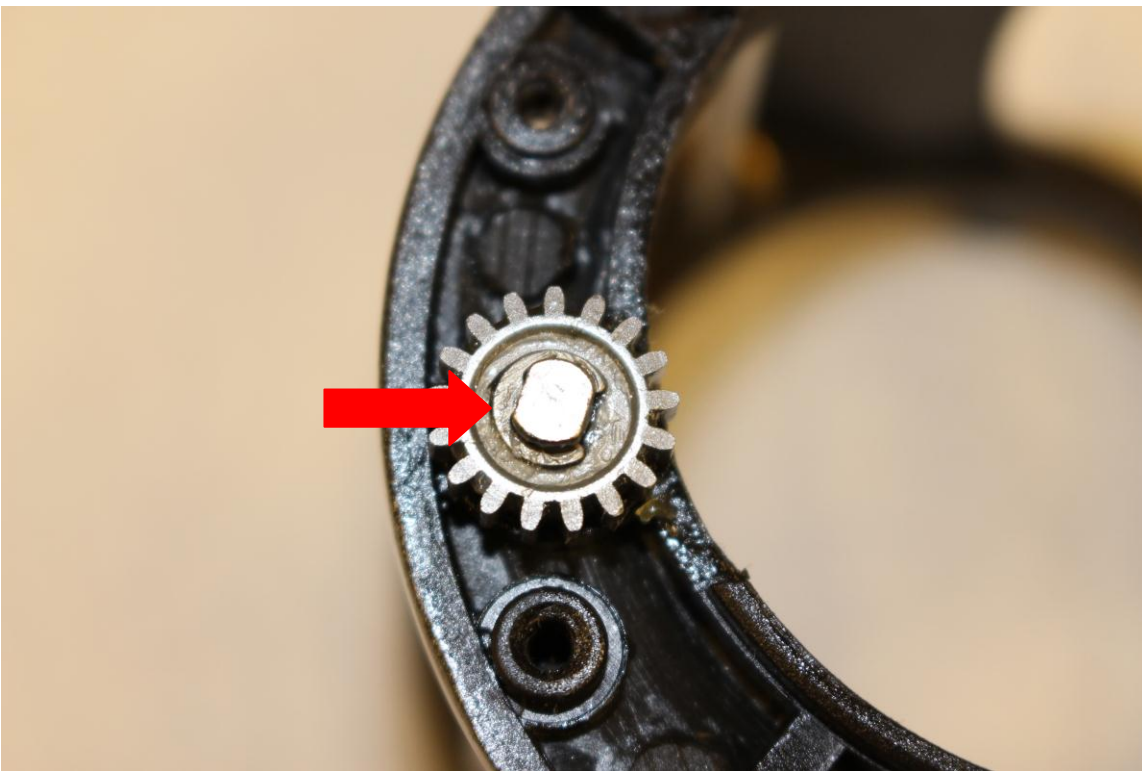


The Pawl Washer inside the Pawl Cap (DM30a).

Cabela's Depthmaster II Tutorial (DM30/DM45)

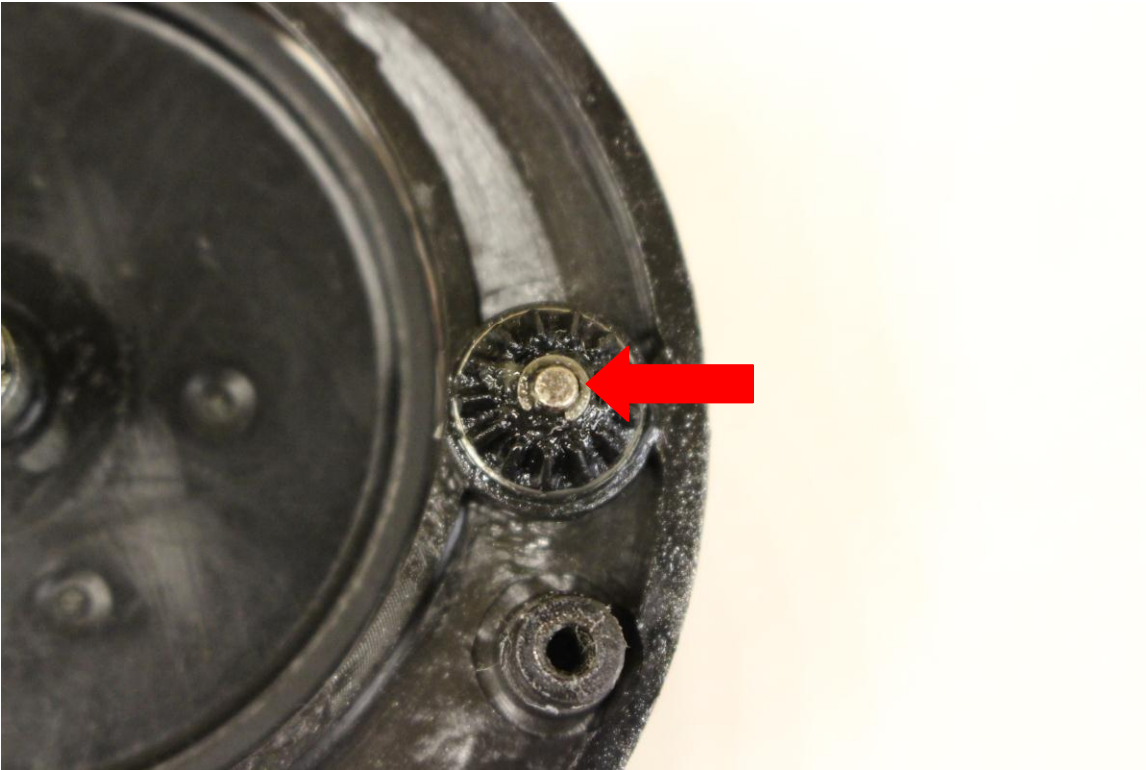


Hold your hand under the Levelwind mechanism, tilt the frame, and the Pawl should slide out easily.



There is an "E" clip on the end of the Worm Shaft which holds the Worm Shaft Gear to the Worm Shaft. It is not necessary to remove this "E" clip or the Worm Shaft Gear unless the Worm Shaft is damaged and needs to be replaced. To remove the "E" clip push on the open end with a small screwdriver.

Cabela's Depthmaster II Tutorial (DM30/DM45)

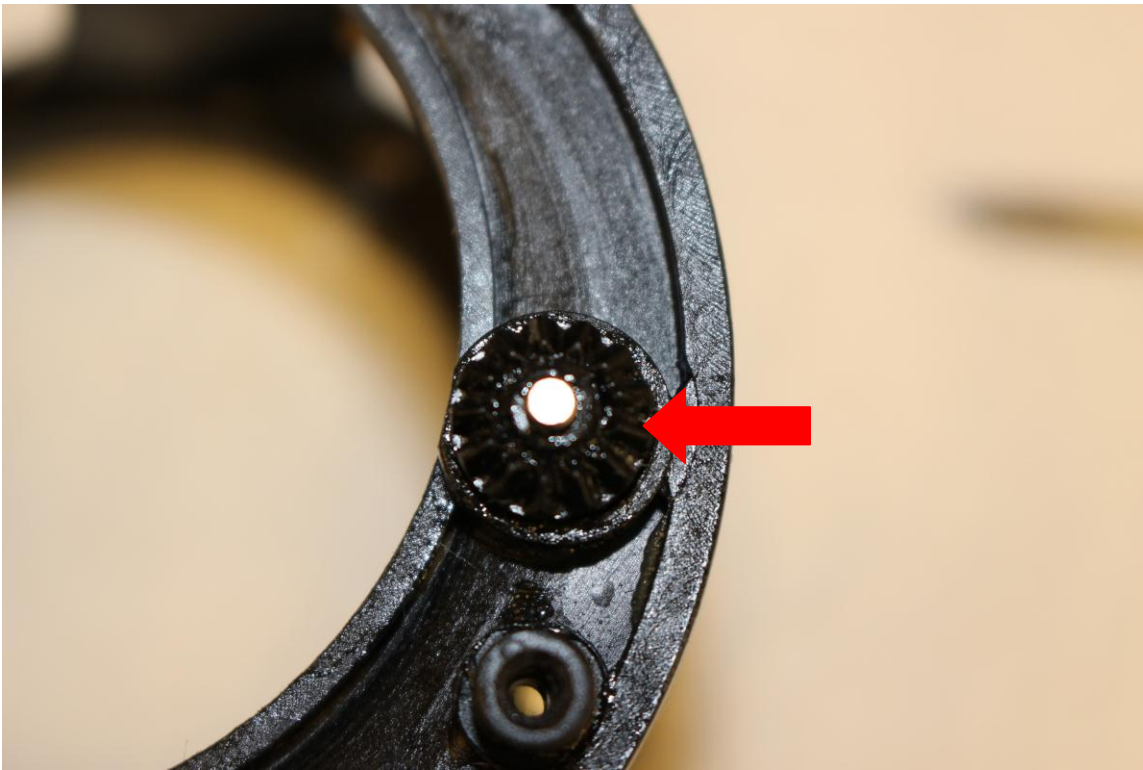


Orient the frame with the left side down. Carefully remove the "C" clip from the plastic Transmission Gear by pushing on the open end with a small screwdriver.

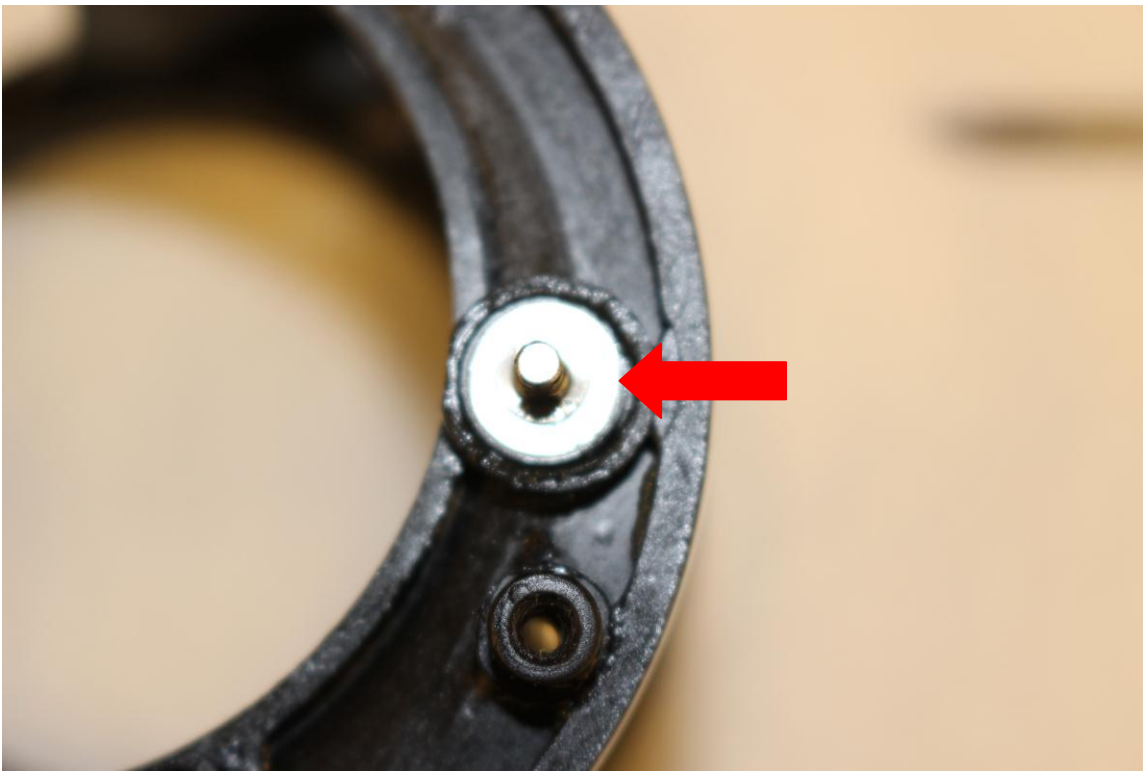


Be careful not to lose the tiny "C" clip.

Cabela's Depthmaster II Tutorial (DM30/DM45)



Remove the plastic Transmission Gear.



Remove the washer beneath the plastic Transmission Gear (DM30). The DM30/DM45 reels have 1 washer under the Transmission Gear.

Cabela's Depthmaster II Tutorial (DM30/DM45)

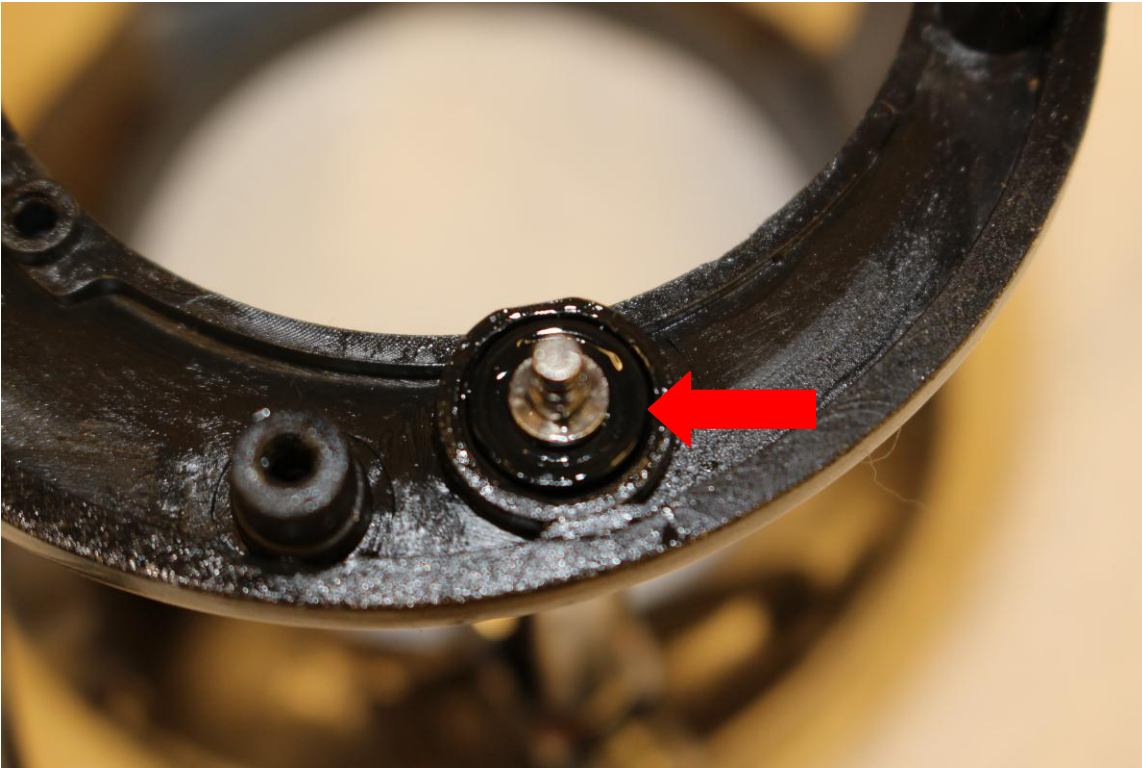


Remove the washers beneath the plastic Transmission Gear (DM30a). The DM30a/DM45a reels have 2 washers under the Transmission Gear.

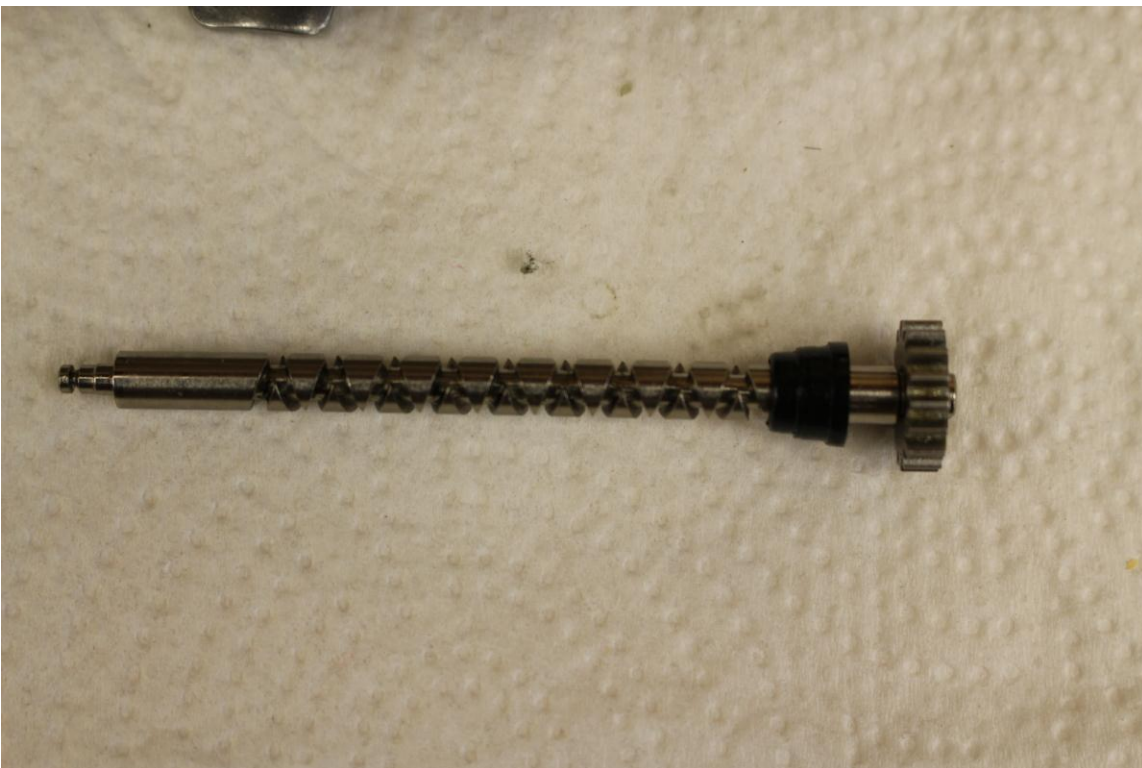


The "C" clip, plastic Transmission Gear, and washer shown in the order they were removed. DM30/DM45.

Cabela's Depthmaster II Tutorial (DM30/DM45)

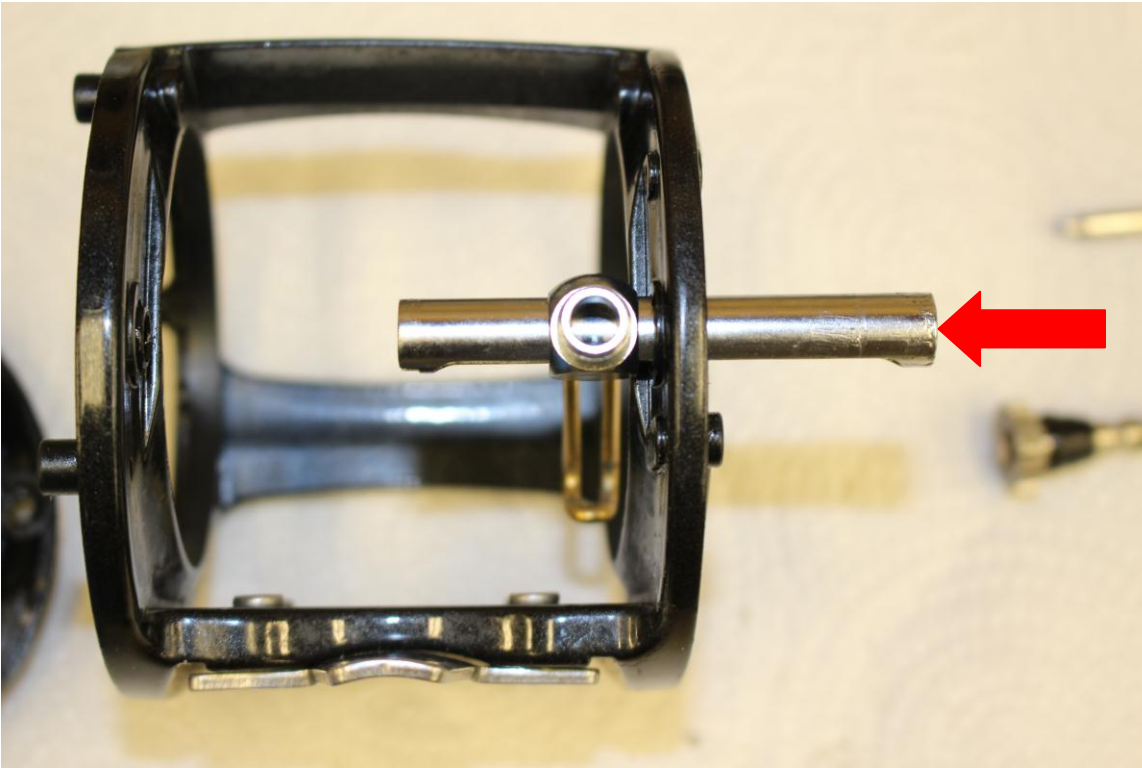


The end of the Levelwind Worm Shaft is free, so the Worm Shaft can be slid out of the other side of the reel frame. Note the arrow is pointing at the bushing which centers the Worm Shaft.



The Worm Shaft after removal from the Level Wind Guard. Note there is a bushing on each end of the Worm Shaft which centers it in the Level Wind Guard. The bushing may slide out with the Worm Shaft.

Cabela's Depthmaster II Tutorial (DM30/DM45)



Slide the Level Wind Guard to the right and remove it from the frame, along with the Line Guide Assembly. Take the bushing(s) out of the Level Wind Guard (or the reel frame if it stuck in the frame) so you don't forget to remove them.



The Levelwind mechanism after disassembly (DM30). The two bushings are shown on the Worm Shaft; the bushings are not identical – there is a Left and a Right bushing.

Cabela's Depthmaster II Tutorial (DM30/DM45)



The Levelwind mechanism after disassembly (DM30a). The Line Guide Assembly on the DM30a has a Pawl Cap O-ring (the DM30/DM45 do not have this O-ring). [The screws on the left edge of the photo are not Levelwind parts, they are Left Side Plate screws.]



Wipe the oil off of the Line Guide Pawl. If the Pawl is worn or damaged order a replacement. If the Line Guide Pawl is worn, check the Worm Shaft for damage.

Cabela's Depthmaster II Tutorial (DM30/DM45)

End of Part 1: Disassembly to the Reel frame.

This is a 6 part Tutorial:

Part 1: Disassembly to the Reel frame.

Part 2: Disassembly of the Right Side.

Part 3: Disassembly of the Left Side, and cleaning tips.

Part 4: Assembly of the Left Side.

Part 5: Assembly of the Right Side.

Part 6: Assembly of the Reel frame.

I hope you enjoyed this tutorial. Please address any comments to user: WeyeFisherCO on the Reel Repair forums at alantani.com.

It seems a little silly to put a disclaimer on a reel tutorial, but better safe than sorry, so here it is:

DISCLAIMER: The information in this document is presented without any kind of warranty. The procedures and methods described worked for the author and his circumstances, but there is no guarantee they will work for you, or are the best methods available. Sometimes manufacturers change components or designs without changing the model numbers; two reels with the same model number may not contain exactly the same components or be assembled the same way. Be aware of the hazards associated with chemicals; use extreme care when handling/using hazardous chemicals. Wear safety glasses. USE AT YOUR OWN RISK!

Copyright 2017 by David Dressen.



This work is licensed under a [Creative Commons Attribution-NonCommercial-NoDerivatives 4.0 International License](https://creativecommons.org/licenses/by-nc-nd/4.0/).