

Cabela's Depthmaster II Tutorial (DM30/DM45)

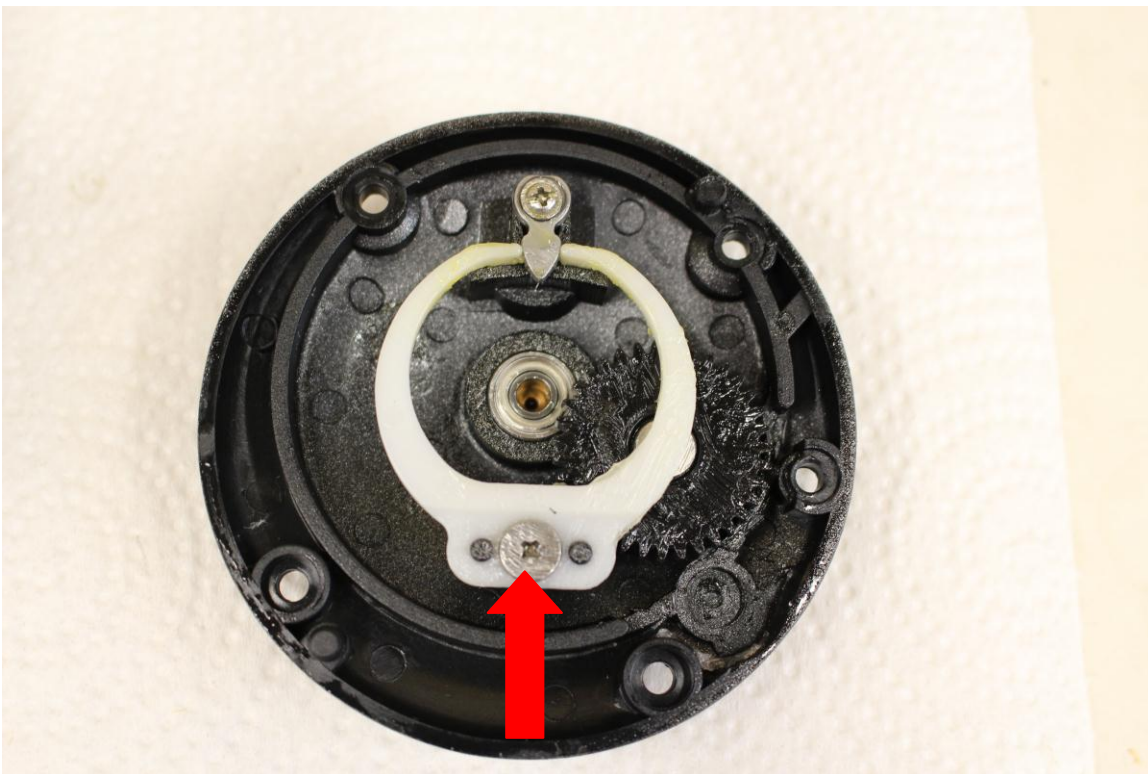
Part 3: Disassembly of the Left Side

This is Part 3 of a 6 Part Tutorial on assembly and disassembly of Cabela's® Depthmaster™ II reels.

In Part 3 of the tutorial the Left Side Subassembly is disassembled, plus reel Cleaning Tips.

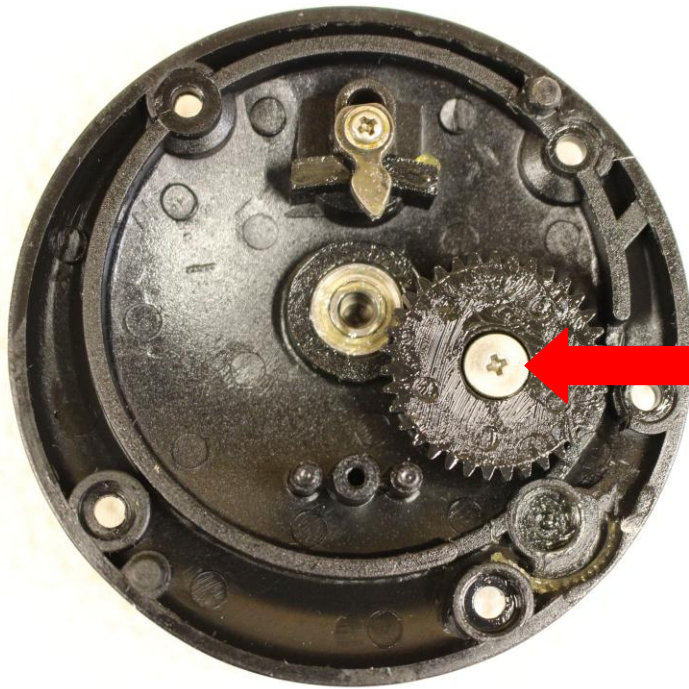
The DM30 and DM45 assembly and disassembly procedures are identical. The DM30a and DM45a are 98% the same (they are shipped from the factory with "Carbonite" carbon fiber drag washers.) The DM15, DM15a, DM20, and DM20a are 95% the same as the DM30 and DM45 reels.

Digital cameras are your friend. Take photos as you disassemble the reel if it differs from what is shown here. The photos should make it easier to put everything back together later. Use this tutorial at your own risk - see the disclaimer on the last page of this document.

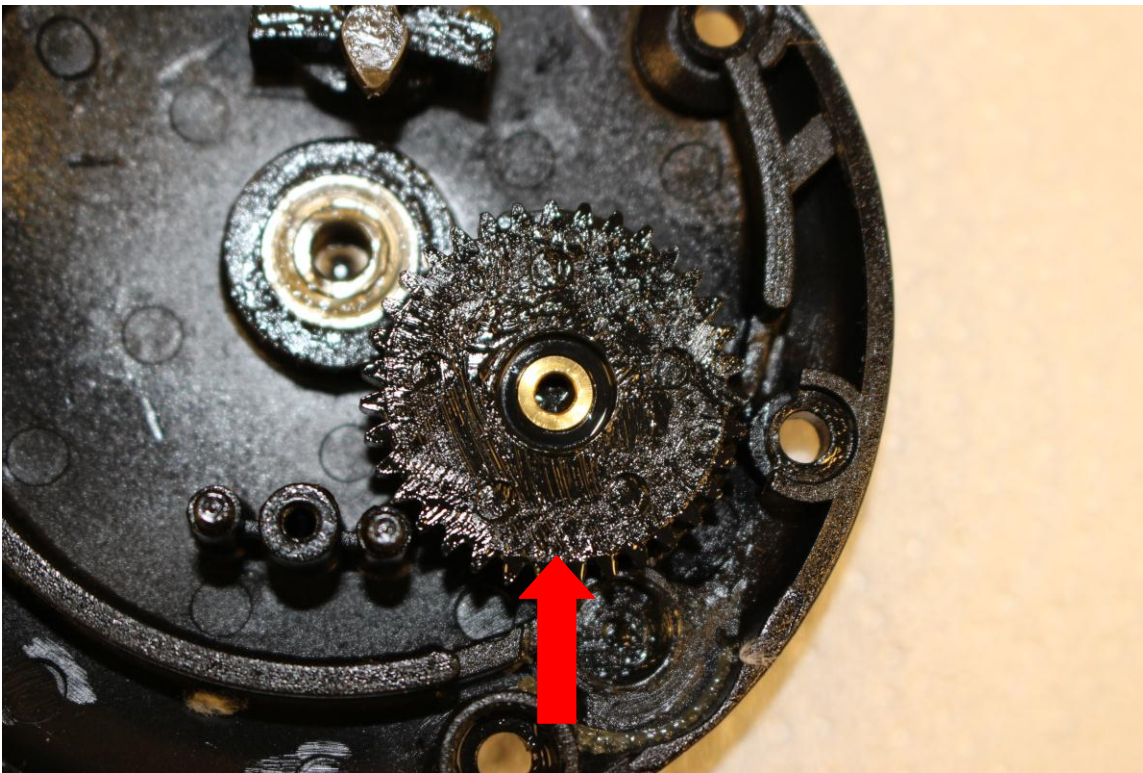


The inside of the Left Side Plate is shown here. Remove the Screw and Click Pawl Spring.

Cabela's Depthmaster II Tutorial (DM30/DM45)

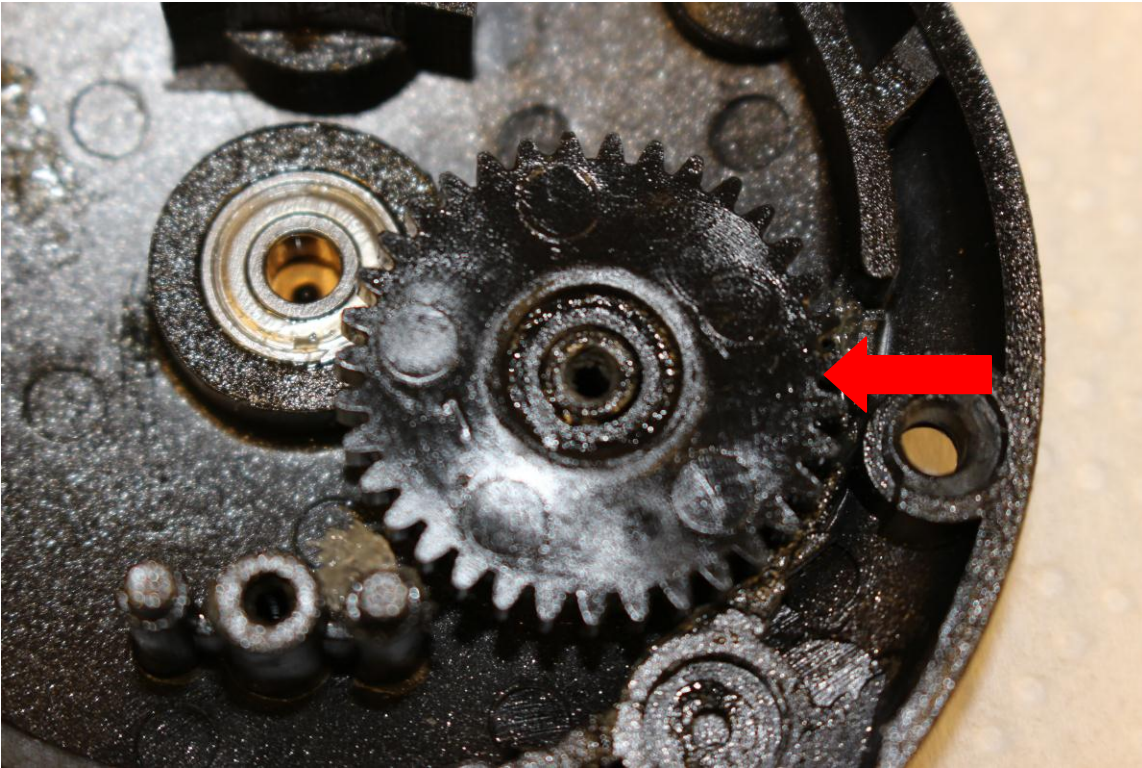


Remove the Transmission Gear Screw.

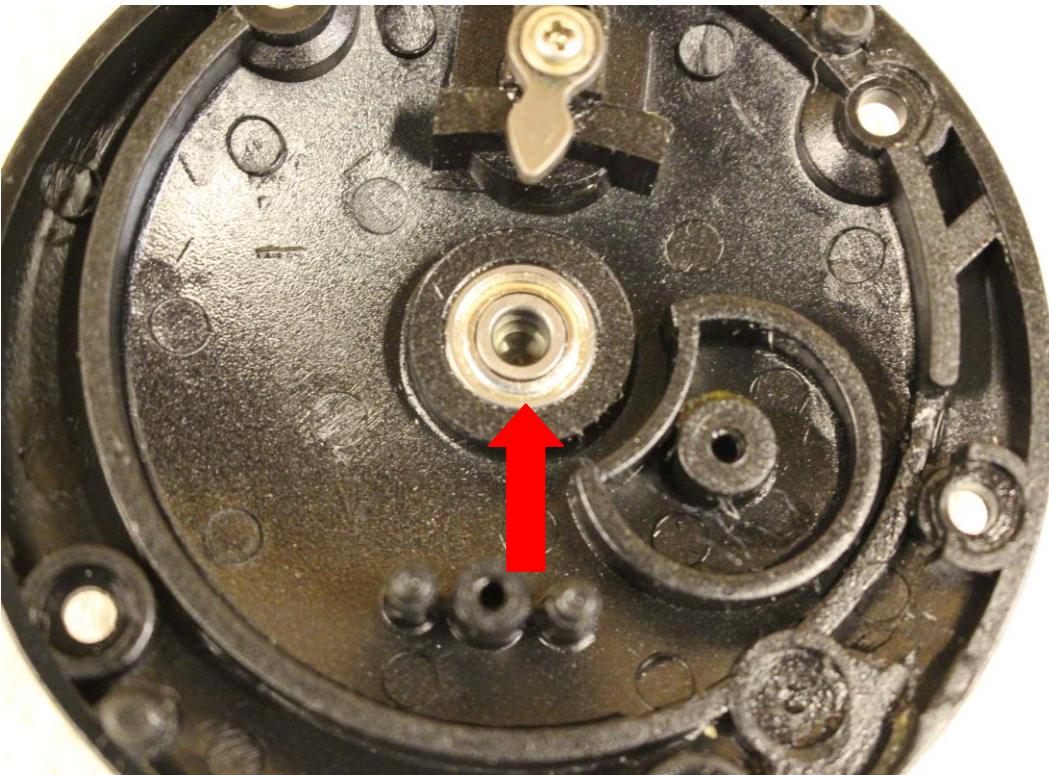


On the DM30/DM45 the Medium Transmission Gear has a brass Bushing. Remove the Gear and Bushing.

Cabela's Depthmaster II Tutorial (DM30/DM45)

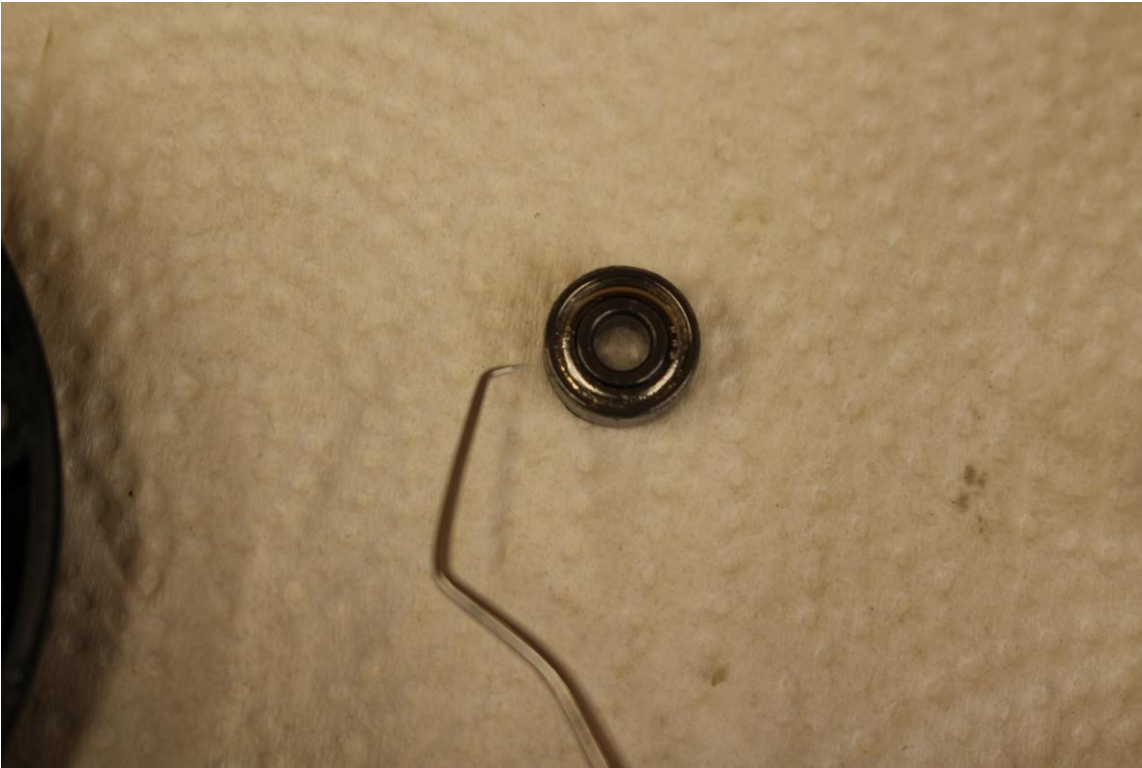


On the DM30a/DM45a there is no Bushing. Remove the Medium Transmission Gear.

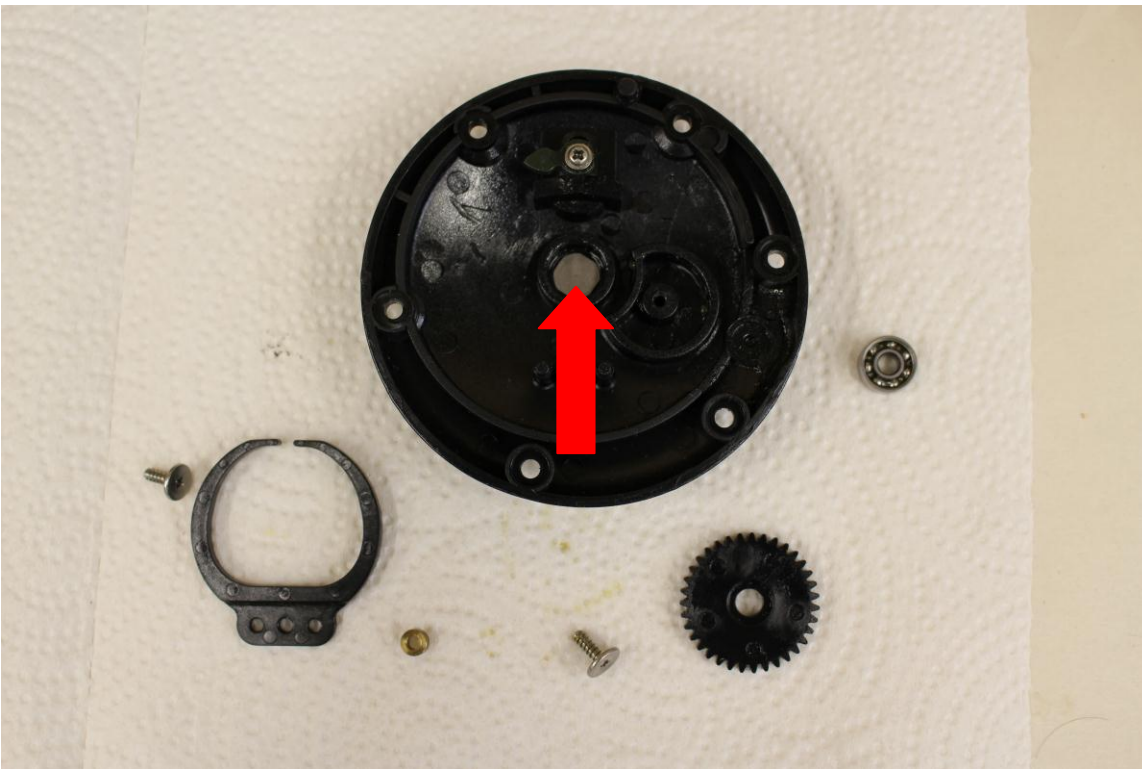


Remove the Ball Bearing by putting a dental pick or other tool in the center hole and pulling the Ball bearing straight up out of the side plate.

Cabela's Depthmaster II Tutorial (DM30/DM45)

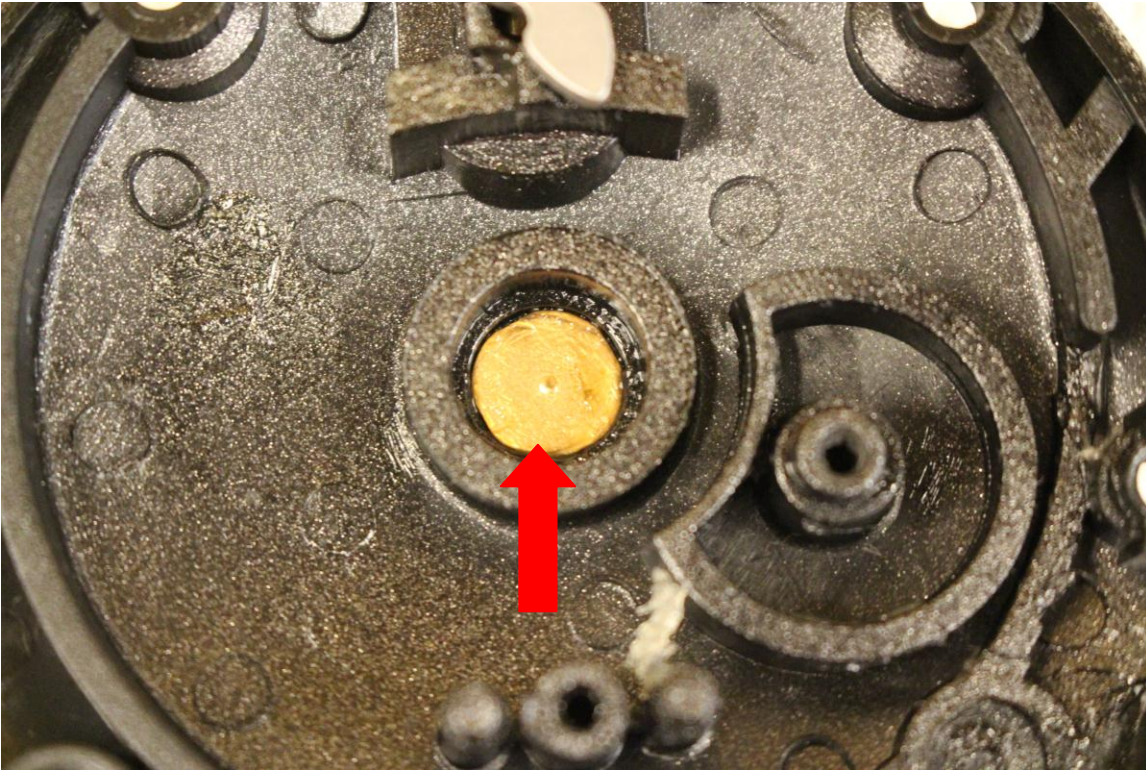


The Ball Bearing shown after removal from the side plate using a dental pick.



The side plate pictured with the parts removed from it. On the DM30/DM45 Spacer under the Ball Bearing is stainless steel. Remove the Spacer by lifting up the edge with a dental pick or similar tool.

Cabela's Depthmaster II Tutorial (DM30/DM45)



On the DM30a/DM45a the Spacer under the Ball Bearing is brass. Remove the Spacer by lifting up the edge with a dental pick or similar tool.

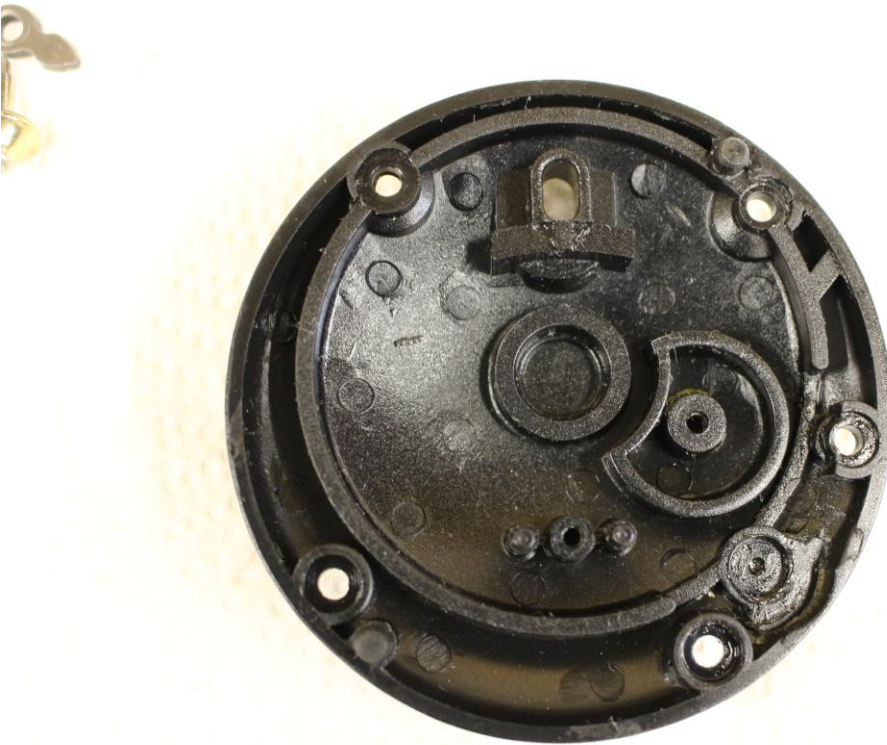


The Click Pawl will be removed next.

Cabela's Depthmaster II Tutorial (DM30/DM45)



The Click Button will spin when the Click Pawl Screw is removed unless something is pushed against the Click Button (like a flat screwdriver blade) while removing the Screw. Remove the Click Pawl Screw. (DM30a)
There is a clear plastic washer under the Click Button.



The side plate shown after all parts are removed.

Cabela's Depthmaster II Tutorial (DM30/DM45)



The Click Pawl, Click Button, and Click Pawl Screw shown after removal. (DM30)

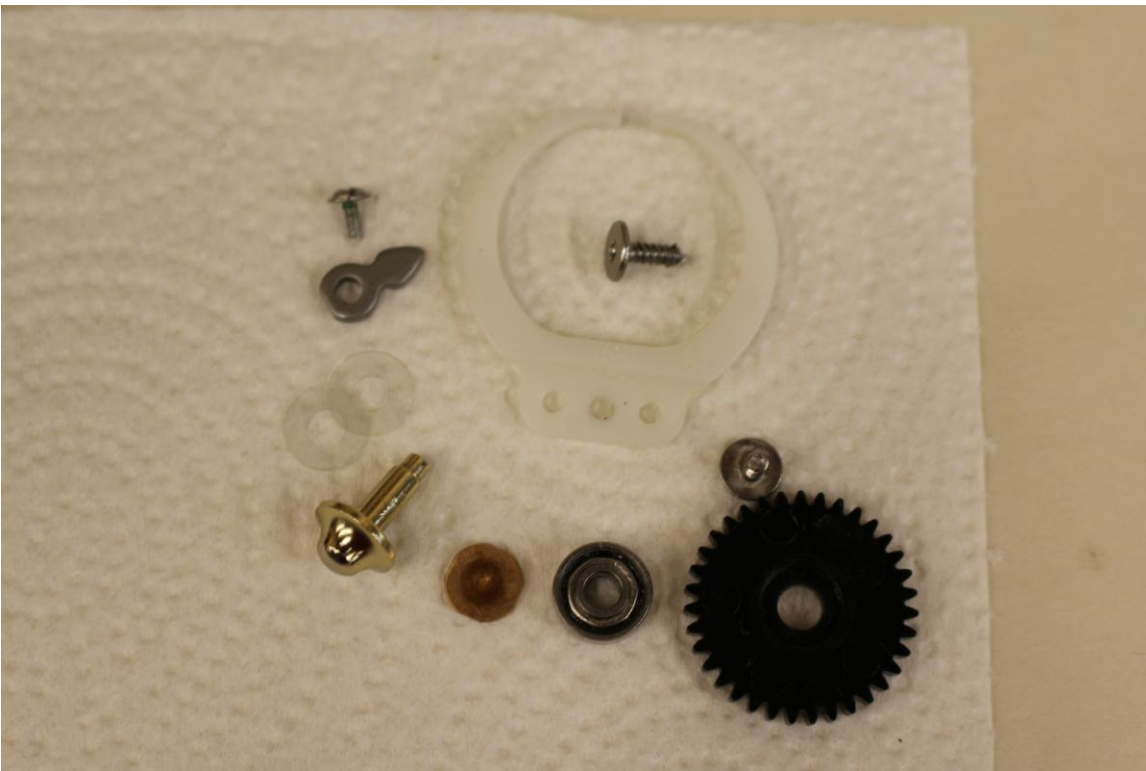


Photo showing all of the parts removed from the Left Side Plate. (DM30a)

Cabela's Depthmaster II Tutorial (DM30/DM45)



The outside of the Left Side Plate shown after disassembly.

All of the reel parts are now ready for cleaning and reassembly.

Cabela's Depthmaster II Tutorial (DM30/DM45)

Reel Cleaning Tips

Wipe the grease and oil off of each piece with a rag or paper towel as it is removed to keep your work area clean. Wear gloves to keep your hands clean.

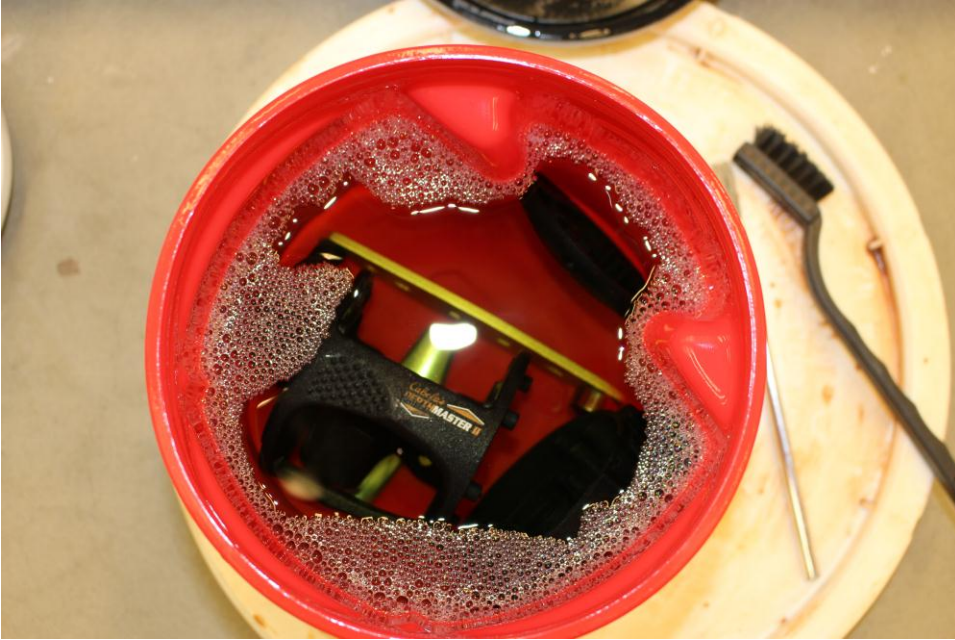
Large parts such as the reel frame and side plates can be cleaned by soaking them in Simple Green® and water (or Dawn® dishwashing liquid and water) to dissolve the grease and loosen the dirt.



A plastic coffee can is the right size for cleaning large reel parts.



Cabela's Depthmaster II Tutorial (DM30/DM45)



After soaking the parts for a half hour or more, scrub them with a nylon detailing brush or an acid brush. Soak them a little longer and then brush them again. Repeat until it looks like the grease is gone, then rinse in hot water.



This photo shows all of the Depthmaster reel parts which were cleaned with Simple Green and water. Let them air dry or blow them dry with compressed air.

Cabela's Depthmaster II Tutorial (DM30/DM45)



A Ball Bearing shown with the metal shield in place. One shield should be removed to allow cleaning and lubrication of the Ball Bearing. I use a sharp fish hook tip to pull the end of the shield locking ring toward the bearing center, then up away from the shield so the shield can be removed.



A Ball Bearing shown with the metal shield and shield locking ring removed.

Cabela's Depthmaster II Tutorial (DM30/DM45)



I like to use Isopropyl Alcohol in a beaker or glass jar for cleaning small parts made of metal or plastic. Most plastics can tolerate exposure to Isopropyl Alcohol (Isopropanol) for at least several minutes without being damaged. Many greases are soluble in Isopropyl Alcohol (they turn white and break up).

Isopropyl Alcohol is less toxic than gasoline or carburetor spray so it can be used inside the house without endangering the family or pets. Caution: Alcohols are flammable; keep them away from open flames.

There are numerous chemical resistance charts on the internet: <https://www.usplastic.com/catalog/files/charts/LG%20CC.pdf> showing the materials a solvent can be used to clean.



A child size soft toothbrush works great for cleaning gear teeth or crevices after a part is soaked in solvents for a few minutes.

Cabela's Depthmaster II Tutorial (DM30/DM45)



A small ultrasonic cleaner speeds up the removal of dirt, grease, and oil from small reel parts. This jewelry cleaner is big enough and not too expensive.



You can fill the ultrasonic cleaner half full with water and suspend/float a small jar or beaker inside to reduce the amount of solvent used to clean a small group of parts. Change the solvent when it gets cloudy.

Warning: Ball Bearings will be damaged if they are ultrasonic cleaned for an extended period of time. This phenomena is known as Fretting (<http://en.wikipedia.org/wiki/Fretting>) It is better to soak the bearings in solvent for 10 minutes, ultrasonic clean them for ½ to 1 minute, soak for another 5 to 10 minutes, and ultrasonic clean them for ½ to 1 minute rather ultrasonic cleaning them continuously for 5 to 10 minutes.

Warning: Do not put your fingers inside a running ultrasonic cleaner; your joints can be damaged by the vibration.

Cabela's Depthmaster II Tutorial (DM30/DM45)



Metal polish and a child size toothbrush can be used to remove minor surface corrosion and discoloration caused by oxidation. After polishing, clean the part to remove the abrasives before you reassemble the reel.

Cabela's Depthmaster II Tutorial (DM30/DM45)

End of Part 3: Disassembly of the Left Side, and Cleaning Tips.

This is a 6 part Tutorial:

Part 1: Disassembly to the Reel frame.

Part 2: Disassembly of the Right Side.

Part 3: Disassembly of the Left Side, and cleaning tips.

Part 4: Assembly of the Left Side.

Part 5: Assembly of the Right Side.

Part 6: Assembly of the Reel frame.

I hope you enjoyed this tutorial. Please address any comments to user: WeyeFisherCO on the Reel Repair forums at alantani.com.

It seems a little silly to put a disclaimer on a reel tutorial, but better safe than sorry, so here it is:

DISCLAIMER: The information in this document is presented without any kind of warranty. The procedures and methods described worked for the author and his circumstances, but there is no guarantee they will work for you, or are the best methods available. Sometimes manufacturers change components or designs without changing the model numbers; two reels with the same model number may not contain exactly the same components or be assembled the same way. Be aware of the hazards associated with chemicals; use extreme care when handling/using hazardous chemicals. Wear safety glasses. USE AT YOUR OWN RISK!

Copyright 2017 by David Dressen.



This work is licensed under a [Creative Commons Attribution-NonCommercial-NoDerivatives 4.0 International License](https://creativecommons.org/licenses/by-nc-nd/4.0/).