

Cabela's Depthmaster II Tutorial (DM30/DM45)

Part 4: Assembly of the Left Side

This is Part 4 of a 6 Part Tutorial on assembly and disassembly of Cabela's® Depthmaster™ II reels.

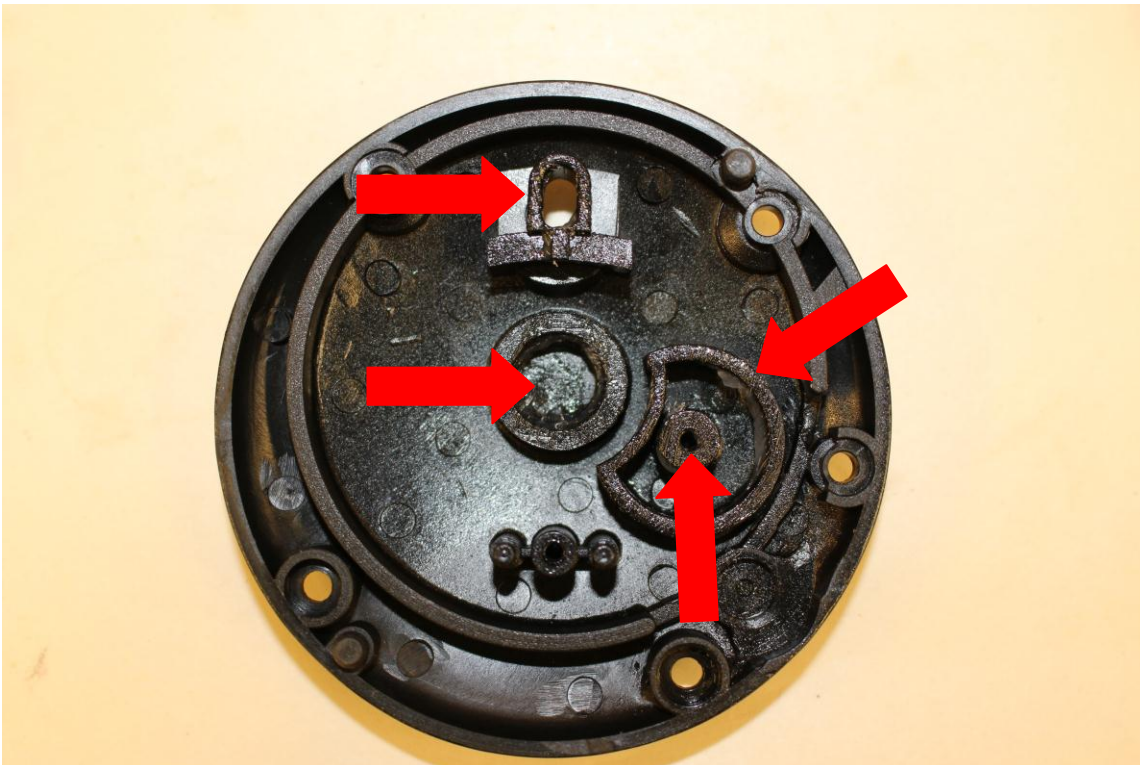
In Part 4 of the tutorial the Left Side Subassembly is assembled.

The DM30 and DM45 assembly and disassembly procedures are identical. The DM30a and DM45a are 98% the same (they are shipped from the factory with "Carbonite" carbon fiber drag washers.) The DM15, DM15a, DM20, and DM20a are 95% the same as the DM30 and DM45 reels.

Use this tutorial at your own risk - see the disclaimer on the last page of this document.

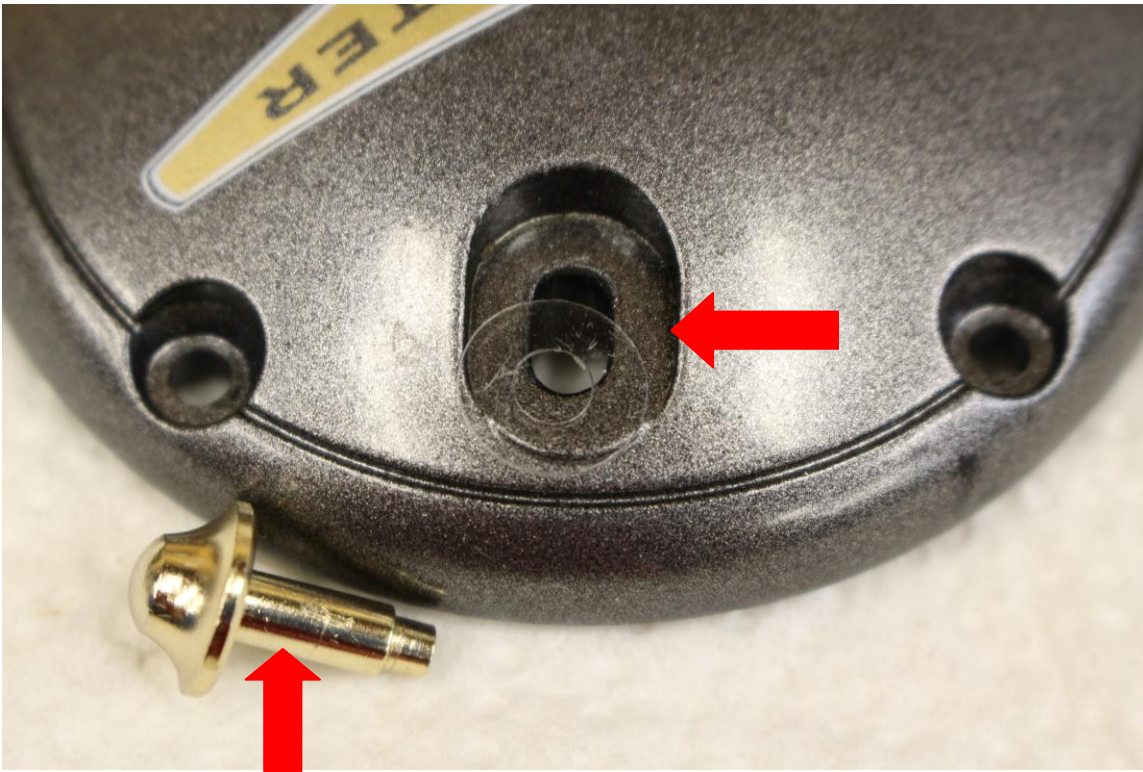
Lubricate the parts as you assemble the reel. Apply grease to all interior metal surfaces to protect them from corrosion. Apply grease to every location where parts rub together unless you are instructed to use oil instead. Many people use special oil on the spool bearings of casting reels. Line counter reels are not used for casting, so special oil is not required for the bearings (it is your choice). Carbon Fiber drag washers should be greased with Drag Grease. "Acid brushes" work great for applying grease.

Use your favorite reel lubricants. In this tutorial I am using Super Lube® Synthetic Grease, Break Free® CLP® oil, Abu Garcia® Silicote® Reel Lube (grease) for packing bearings, and Cal's Universal Reel & Star Drag Grease on the drag washers. I am fishing in fresh water and have observed no degradation of any of these lubricants after 5+ years of use in reels.

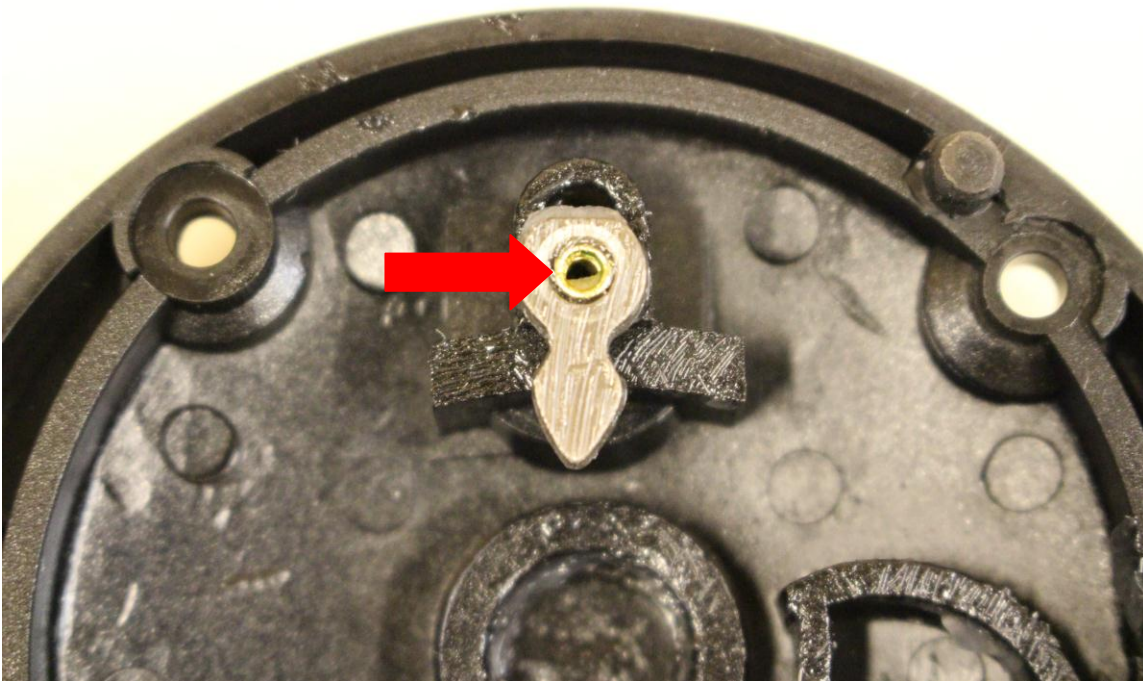


The inside of the Left Side Plate is shown here. Grease the surface where parts will move against the side plate (where indicated by the Red arrows).

Cabela's Depthmaster II Tutorial (DM30/DM45)

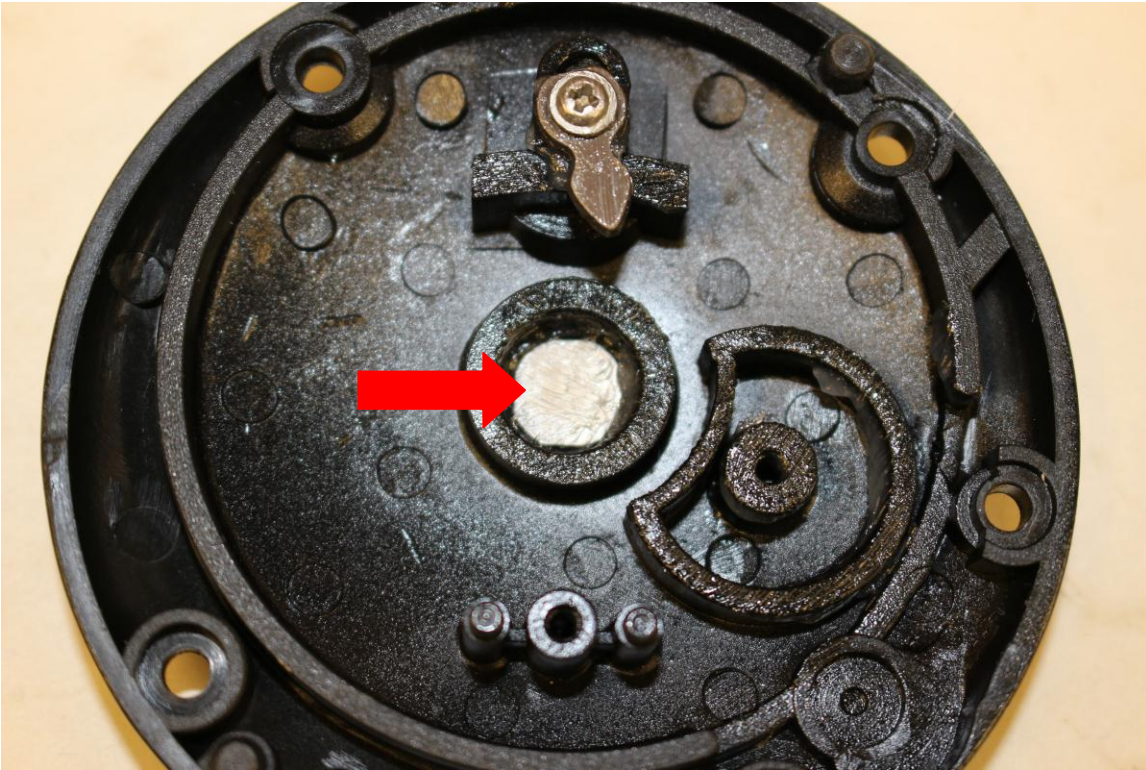


Lightly grease the bottom flange and shaft of the Click Button, lightly grease the surface of the side plate where the Click Button slides, then insert the Click Button thru the clear plastic washer and into the side plate. (DM30a)

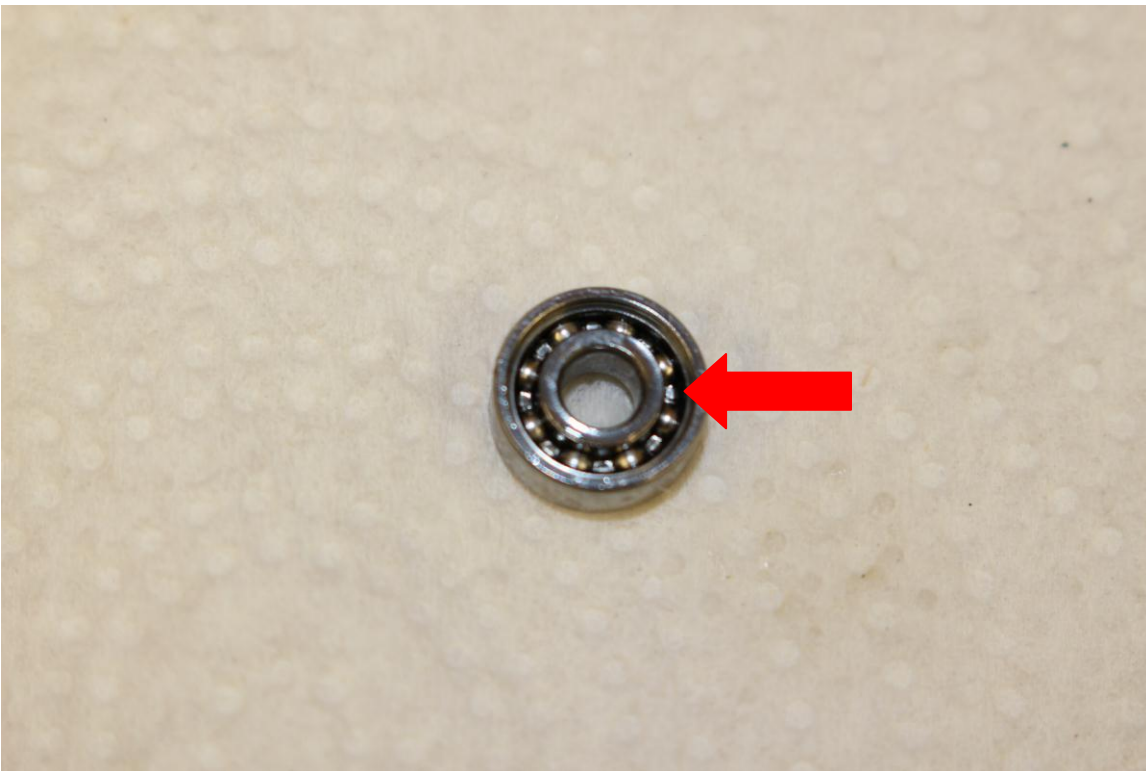


Grease the Click Pawl and slide it on the Click Button shaft. Insert the Click Pawl Screw and tighten the screw until it is snug. The Click Button will spin when the Click Pawl Screw is tightened unless something is pushed against the Click Button (like a flat screwdriver blade).

Cabela's Depthmaster II Tutorial (DM30/DM45)



Grease both sides of the Spacer and insert it into the side plate bearing pocket.

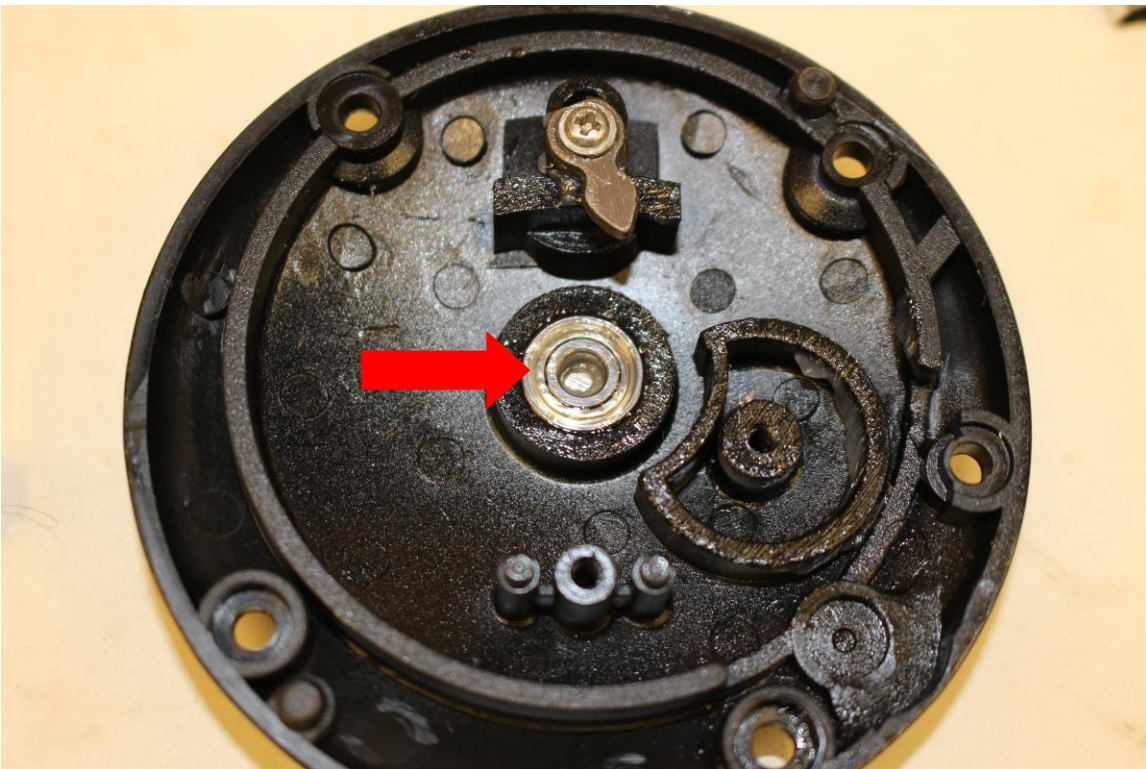


Put one drop of oil into the side of the Ball Bearing which has the shield removed, then rotate the bearing a few turns to spread the oil over all of the bearing and race surfaces. [Part 3 of the tutorial shows how the Ball Bearing shield is removed.]

Cabela's Depthmaster II Tutorial (DM30/DM45)

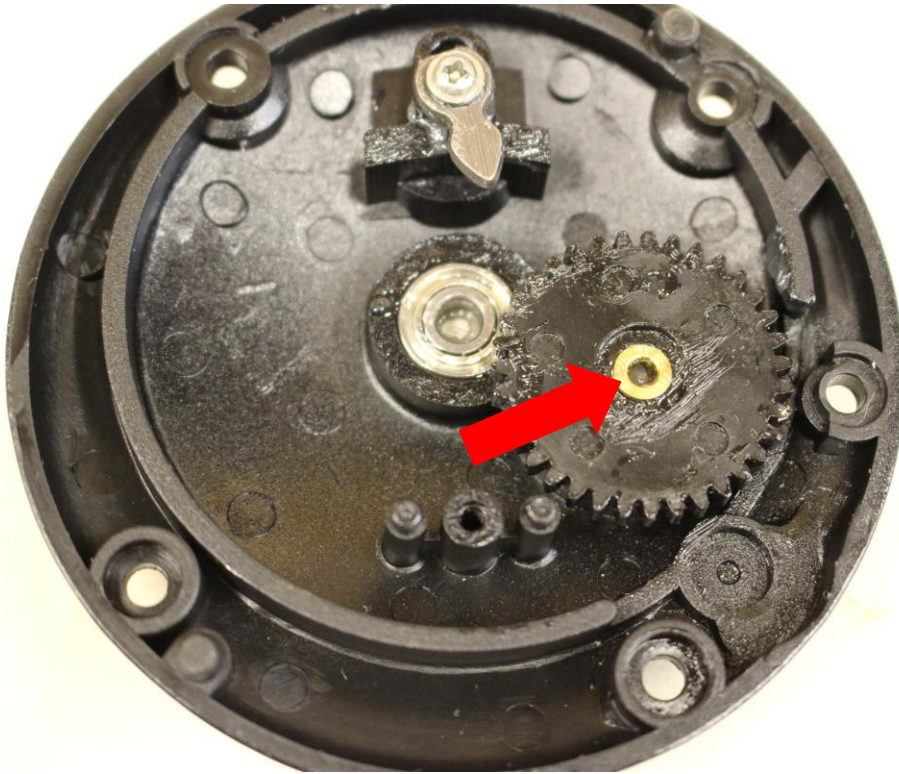


Pack the Ball Bearing with grease. I used Silicote grease because it comes in a tube with an applicator tip which is a convenient size for applying the grease. Super Lube would work just as well for greasing Ball Bearings. Try not to get lots of grease on the outer race of the Ball Bearing; we don't want the race to spin in the side plate.

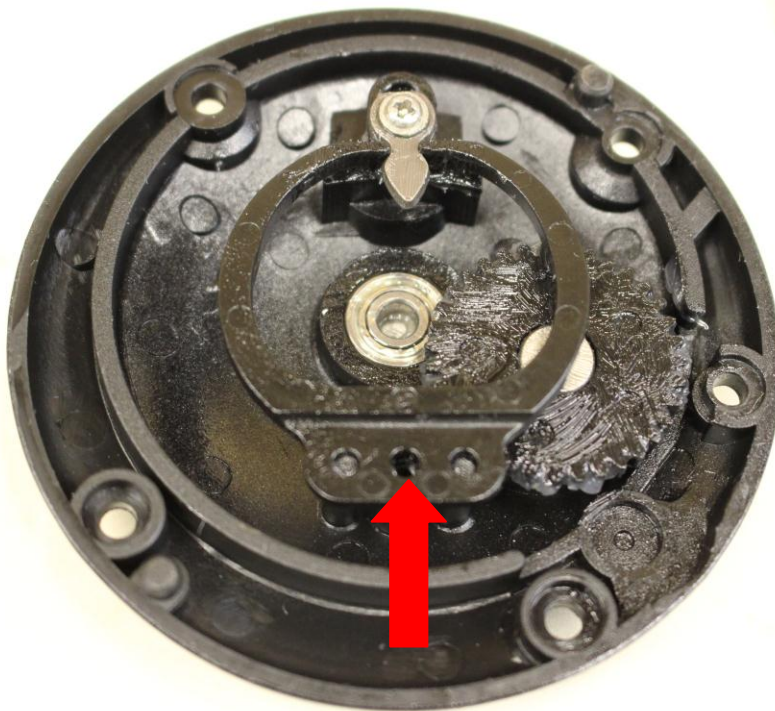


Push the Ball Bearing into the side plate. I insert the Ball Bearing open side down (personal preference). Lightly grease the exposed bearing shield to protect it from corrosion.

Cabela's Depthmaster II Tutorial (DM30/DM45)



Grease the bottom surface of the Medium Transmission Gear and the brass bushing, then mount the medium Transmission Gear and bushing on the side plate. Insert and tighten the Transmission Gear Screw. [The DM30/DM45 have a brass bushing. The DM30a/DM45a do not have a brass bushing.]

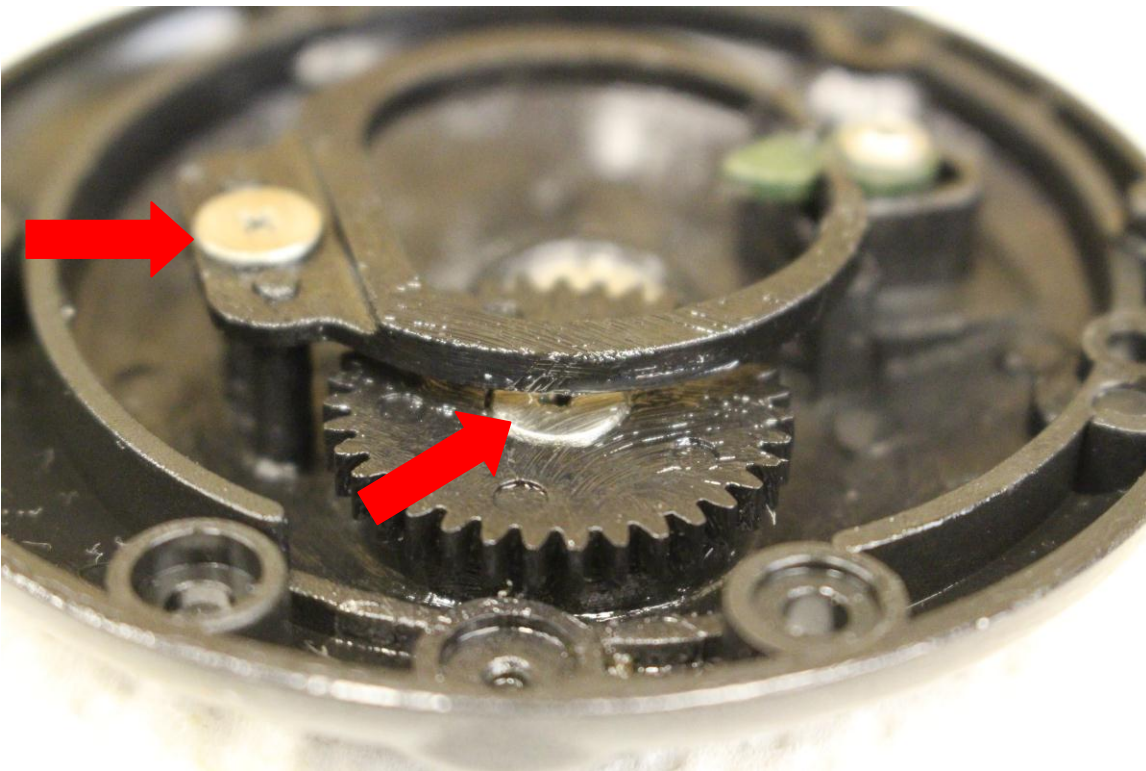


Grease the tips of the Click Pawl Spring where they contact the Click Pawl, then mount the Click Pawl Spring on the side plate posts. Insert the Screw and tighten it.

Cabela's Depthmaster II Tutorial (DM30/DM45)

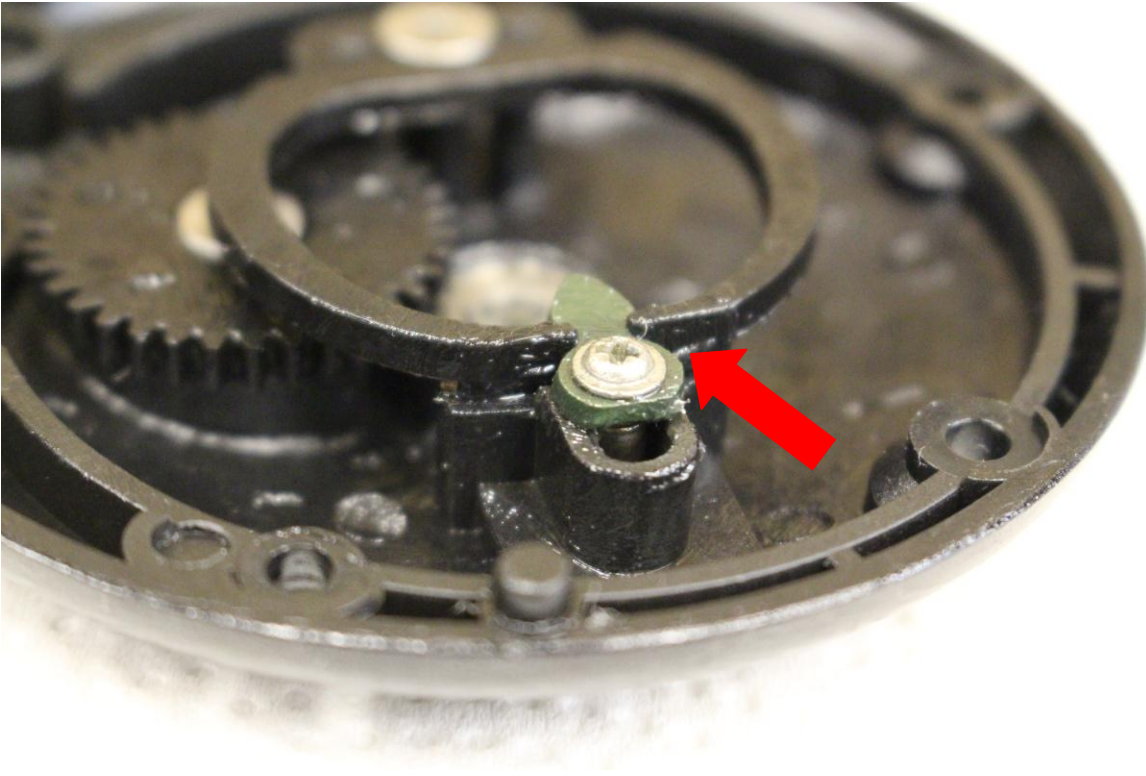


Assembly of the Left Side Plate is complete.



Don't forget to lubricate the top surfaces of the Screws to protect them from corrosion. Note the medium Transmission Gear does not touch the Click Pawl Spring, so you can easily brush grease on the Screw after side plate assembly.

Cabela's Depthmaster II Tutorial (DM30/DM45)



Test the Click Pawl button to make sure it slides freely. With the Click Button pushed down, the Click Pawl Spring should look like this.



With the Click Button pushed up, the Click Pawl Spring should look like this.

Cabela's Depthmaster II Tutorial (DM30/DM45)

End of Part 4: Assembly of the Left Side.

This is a 6 part Tutorial:

Part 1: Disassembly to the Reel frame.

Part 2: Disassembly of the Right Side.

Part 3: Disassembly of the Left Side, and cleaning tips.

Part 4: Assembly of the Left Side.

Part 5: Assembly of the Right Side.

Part 6: Assembly of the Reel frame.

I hope you enjoyed this tutorial. Please address any comments to user: WeyeFisherCO on the Reel Repair forums at alantani.com.

It seems a little silly to put a disclaimer on a reel tutorial, but better safe than sorry, so here it is:

DISCLAIMER: The information in this document is presented without any kind of warranty. The procedures and methods described worked for the author and his circumstances, but there is no guarantee they will work for you, or are the best methods available. Sometimes manufacturers change components or designs without changing the model numbers; two reels with the same model number may not contain exactly the same components or be assembled the same way. Be aware of the hazards associated with chemicals; use extreme care when handling/using hazardous chemicals. Wear safety glasses. USE AT YOUR OWN RISK!

Copyright 2017 by David Dressen.



This work is licensed under a [Creative Commons Attribution-NonCommercial-NoDerivatives 4.0 International License](https://creativecommons.org/licenses/by-nc-nd/4.0/).