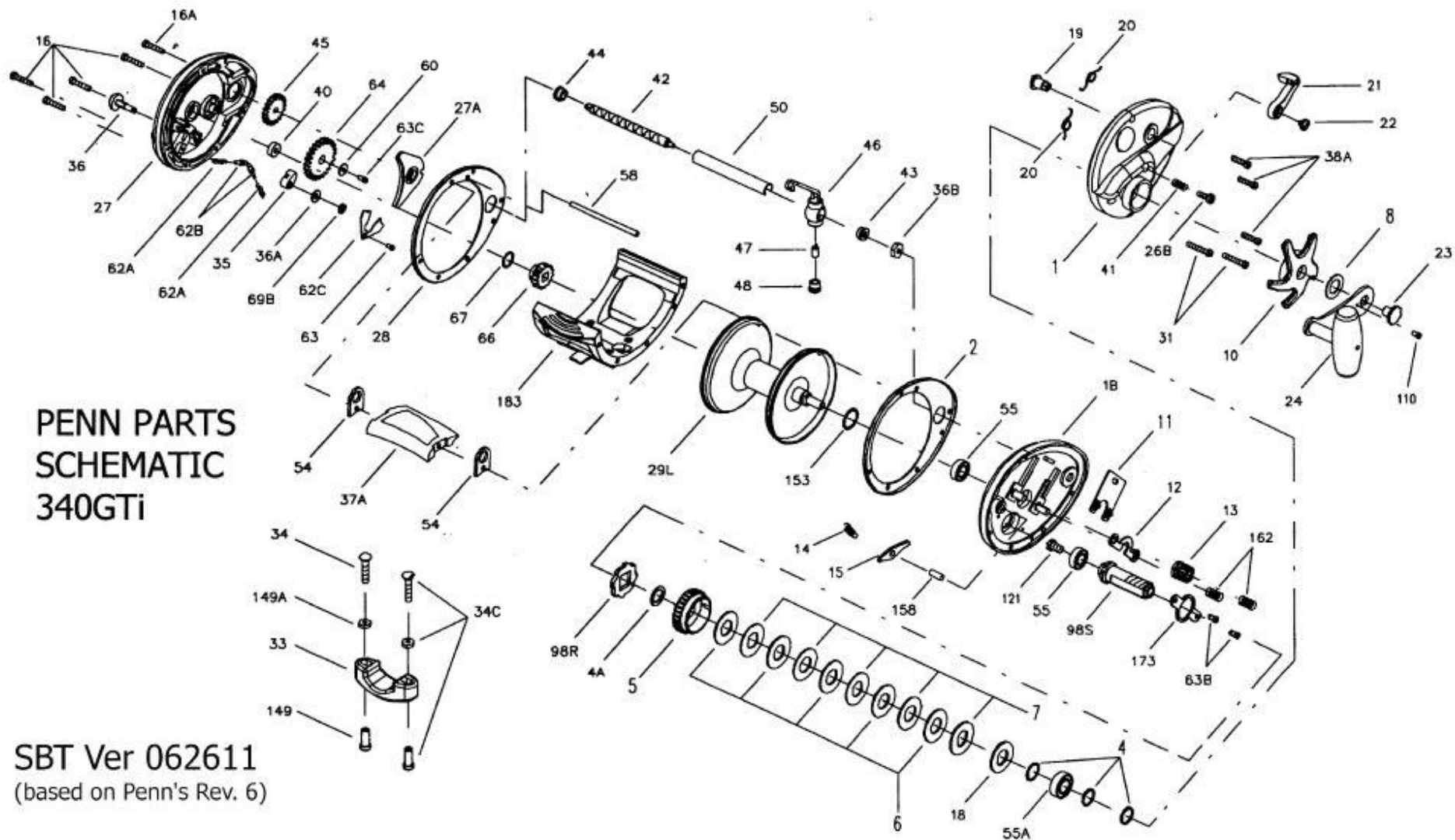


# 340/345 GTI

by ALANTANI « on: December 07, 2008, 08:24:40 AM »



# Penn Reel Parts list for:

Model: 340GTi

KEY	PART	
NO	NO.	DESCRIPTION
1	1-340	R.S. OUTER PLATE
1B	1B-340	R.S. INNER PLATE
2	2-340	RIGHT SIDE RING
4	4-340	BEARING WASHER (SET OF 3)
4A	4-349	FIBER WASHER
5	5-113H	MAIN GEAR
6	6-113H	FRICTION DRAG WASHER (5 REQ.)
7	7C-113H	METAL DRAG WASHER (SET)
8	8-349	TENSION SPRING
10	10-340	STAR DRAG
11	11-340	ECCENTRIC JACK
12	12-340	PINION YOKE
13	13-113H	PINION GEAR
14	14-330	DOG SPRING
15	15-340	DOG
16	16-9	L.S. PLATE SCREW (5 REQ.)
18	18-970	TENSION SPRING DRAG
19	19-340	ECCENTRIC CAM
20	20-155	ECCENTRIC SPRING (2 REQ.)
21	21-340	ECCENTRIC LEVER
22	22-60CH	ECCENTRIC SCREW
23	23-114	HANDLE ASSEMBLY SCREW
24	24B-40P	HANDLE ASSEMBLY
26B	26B-340	SPOOL TENSION CONTROL SCREW
27	27-340	LEFT SIDE OUTER PLATE
27A	27A-340	LEFT SIDE INNER PLATE
28	28-340	LEFT SIDE RING
29L	29L-340	ALUMINUM SPOOL
31	31-340	R.S. PLATE LONG SCREW (2 REQ.)
33	33-340	ROD CLAMP
34	34-45	ROD CLAMP SCREW (2 REQ.)
34C	34C-45	ROD CLAMP SCREW W/ NUTS
35	35-310N	CLICK TONGUE
36	36-340	CLICK BUTTON
36A	36A-340	CLICK TOUNGE WASHER
36B	36-700	LOCK NUT
37A	37A-340	TOP SPACER
38A	38A-340	R.S. PLATE SCREW SHORT (3 REQ.)

KEY	PART	
NO	NO.	DESCRIPTION
40	40-320	BALL BEARING
41	41-330	R.S. THRUST SPRING
42	42-340	WORM
43	43-340	R.S. WORM BEARING
44	44-340	L.S. WORM BEARING
45	45-340	WORM GEAR
46	46-340	LINE GUIDE CARRIAGE
47	47-340	PAWL
48	48-330N	PAWL COVER SCREW
50	50-340	WORM SHEILD
54	54-113	HARNESS LUG (2 REQ.)
55	55-12H	BALL BEARING (2 REQ.)
55A	55-80ST	BALL BEARING
58	58-340	LINE GUIDE POST
60	60-320	IDLER GEAR WASHER
62A	62A-310	CLICK SPRING (2 REQ.)
62B	62B-310	CLICK PIN
62C	62C-310	CLICK SPRING COVER
63	63-500S	CLICK SPRING SCREW
63B	63-330	BEARING RETAINER SCREW (2 REQ.)
63C	63-330	IDLER GEAR SCREW
64	64-340	IDLER GEAR
66	66-340	SPOOL GEAR CLICK RATCHET
67	67-340	LOCK RING
69B	69B-600	RETAINING RING
98R	98-340	MAIN GEAR RATCHET
98S	134-340	GEAR STUD
110	110-60	HANDLE LOCK SCREW
121	121-340	BEARING SCREW
149	149-45	ROD CLAMP NUT (2 REQ.)
149A	149-200	ROD CLAMP HEX NUT (2 REQ.)
153	153-340	BEARING WASHER
158	158N-340	DOG PIN
162	162-130	CLUTCH SPRING (2 REQ.)
173	173-340	BEARING RETAINER
183	183-340	FRAME



## Penn Reel Parts list for:

Model: 345GTi

KEY NO	PART NO.	DESCRIPTION
1	1-340	R.S. OUTER PLATE
1B	1B-340	R..S. INNER PLATE
2	2-340	RIGHT SIDE RING
4	4-340	BEARING WASHER (SET OF 3)
4A	4-349	FIBER WASHER
5	5-113H	MAIN GEAR
6	6-113H	FRICTION DRAG WASHER (5 REQ.)
7	7C-113H	METAL DRAG WASHER (SET)
8	8-349	TENSION SPRING
10	10-340	STAR DRAG
11	11-340	ECCENTRIC JACK
12	12-340	PINION YOKE
13	13-113H	PINION GEAR
14	14-330	DOG SPRING
15	15-340	DOG
16	16-9	L.S. PLATE SCREW (5 REQ.)
18	18-970	TENSION SPRING DRAG
19	19-340	ECCENTRIC CAM
20	20-155	ECCENTRIC SPRING (2 REQ.)
21	21-340	ECCENTRIC LEVER
22	22-60CH	ECCENTRIC SCREW
23	23-114	HANDLE ASSEMBLY SCREW
24	24B-40P	HANDLE ASSEMBLY
26B	26B-340	SPOOL TENSION CONTROL SCREW
27	27-340	LEFT SIDE OUTER PLATE
27A	27A-340	LEFT SIDE INNER PLATE
28	28-340	LEFT SIDE RING
29L	29L-345	ALUMINUM SPOOL
31	31-340	R.S. PLATE LONG SCREW (2 REQ.)
33	33-340	ROD CLAMP
34	34-45	ROD CLAMP SCREW (2 REQ.)
34C	34C-45	ROD CLAMP SCREW W/ NUTS
35	35-310N	CLICK TONGUE
36	36-340	CLICK BUTTON
36A	36A-340	CLICK TOUNGE WASHER
36B	36-700	LOCK NUT
37A	37A-345	TOP SPACER BAR
38A	38A-340	R.S. PLATE SCREW SHORT (3 REQ.)

KEY NO	PART NO.	DESCRIPTION
40	40-320	BALL BEARING
41	41-330	R.S. THRUST SPRING
42	42-345	WORM
43	43-340	R.S. WORM BEARING
44	44-340	L.S. WORM BEARING
45	45-340	WORM GEAR
46	46-340	LINE GUIDE CARRIAGE
47	47-340	PAWL
48	48-330N	PAWL COVER SCREW
50	50-345	WORM SHEILD
54	54-113	HARNESS LUG (2 REQ.)
55	55-12H	BALL BEARING (2 REQ.)
55A	55-80ST	BALL BEARING
58	58A-345	LING GUIDE POST (Old #58-345)
60	60-320	IDLER GEAR WASHER
62A	62A-310	CLICK SPRING (2 REQ.)
62B	62B-310	CLICK PIN
62C	62C-310	CLICK SPRING COVER
63	63-500S	CLICK SPRING SCREW
63B	63-330	BEARING RETAINER SCREW (2 REQ.)
63C	63-330	IDLER GEAR SCREW
64	64-340	IDLER GEAR
66	66-340	SPOOL GEAR CLICK RATCHET
67	67-340	LOCK RING
69B	69B-600	RETAINING RING
98R	98-340	MAIN GEAR RATCHET
98S	134-340	GEAR STUD
110	110-60	HANDLE LOCK SCREW
121	121-340	BEARING SCREW
149	149-45	ROD CLAMP NUT (2 REQ.)
149A	149-200	ROD CLAMP HEX NUT (2 REQ.)
153	153-340	BEARING WASHER
158	158N-340	DOG PIN
162	162-130	CLUTCH SPRING (2 REQ.)
173	173-340	BEARING RETAINER
183	183-345	FRAME

**here are the schematics.....**

**<http://www.scottsb.t.com/catalog/store/images/pennparts/schematics/340gt.pdf>**

**<http://www.scottsb.t.com/catalog/store/images/pennparts/schematics/345gt.pdf>**

**and here is your reel. the spools are the same as size as the penn 113hl and 113hlw, respectively. they are not interchangeable because the spool shafts are different.**



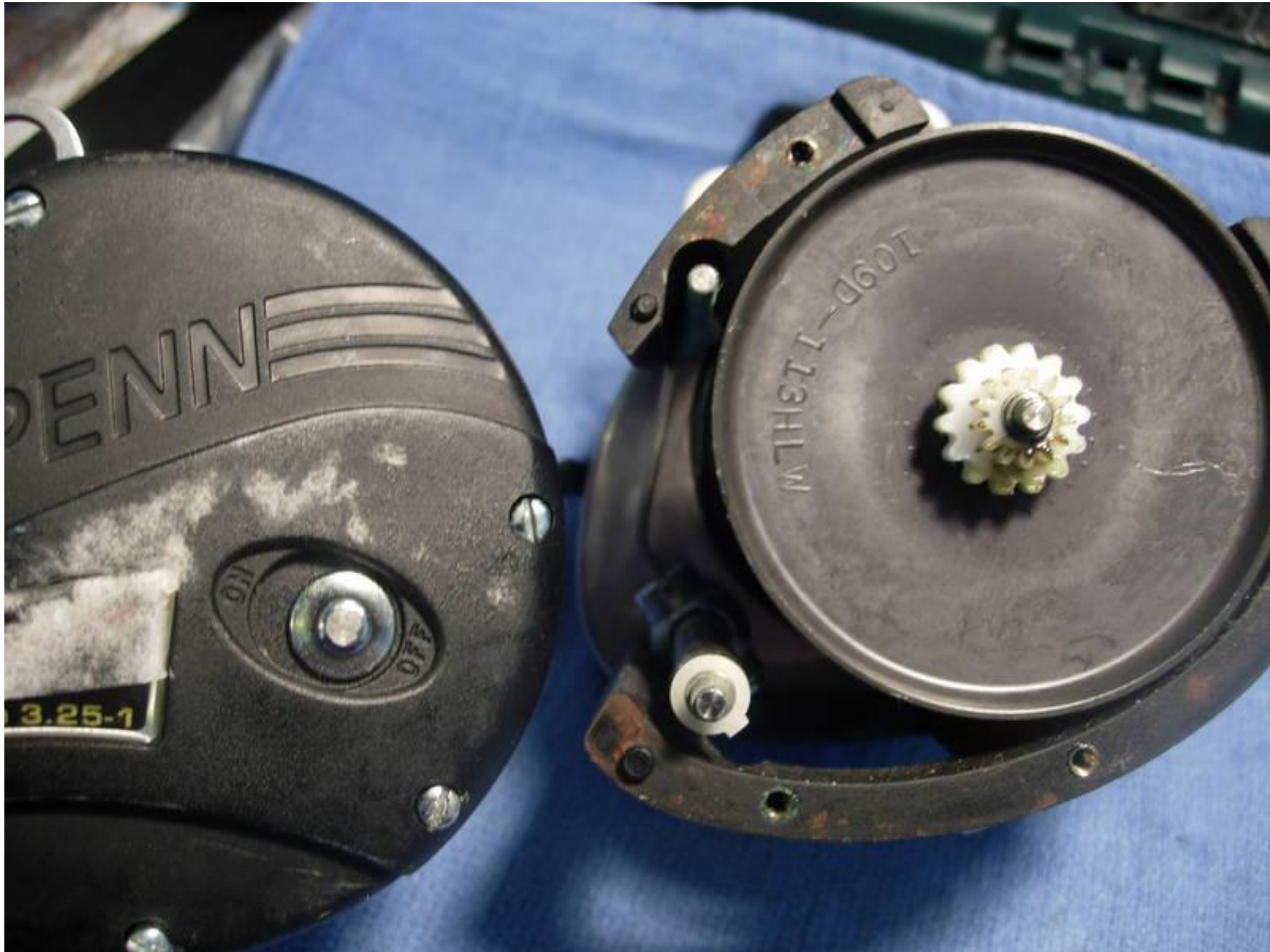


we are going to start by backing out all of the left side plate screws (key #'s 16 and 16A).





carefully remove the left side plate (key #27), leaving the levelwind assembly in place.

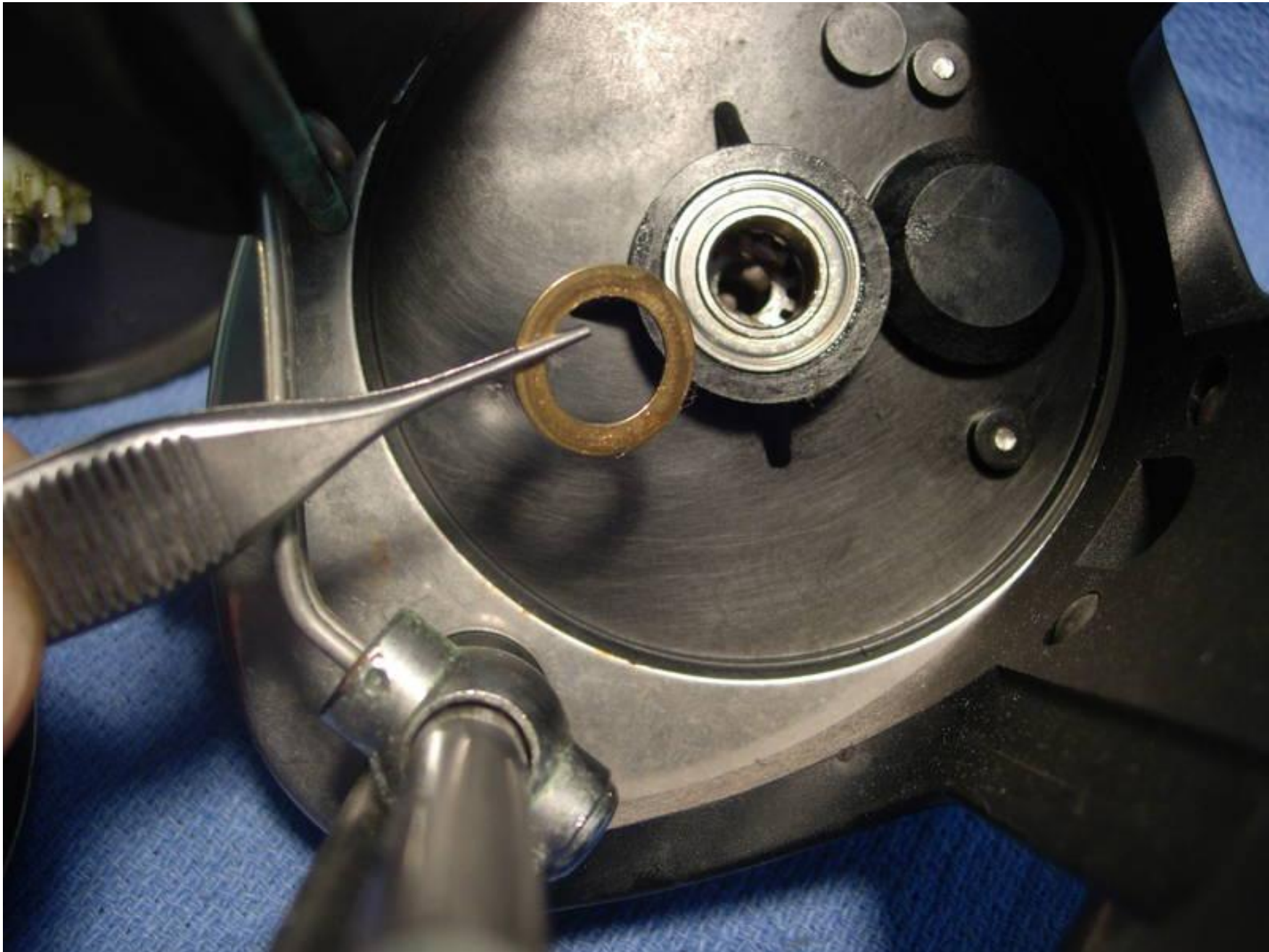




remove the spool (key #29L) and set it aside.

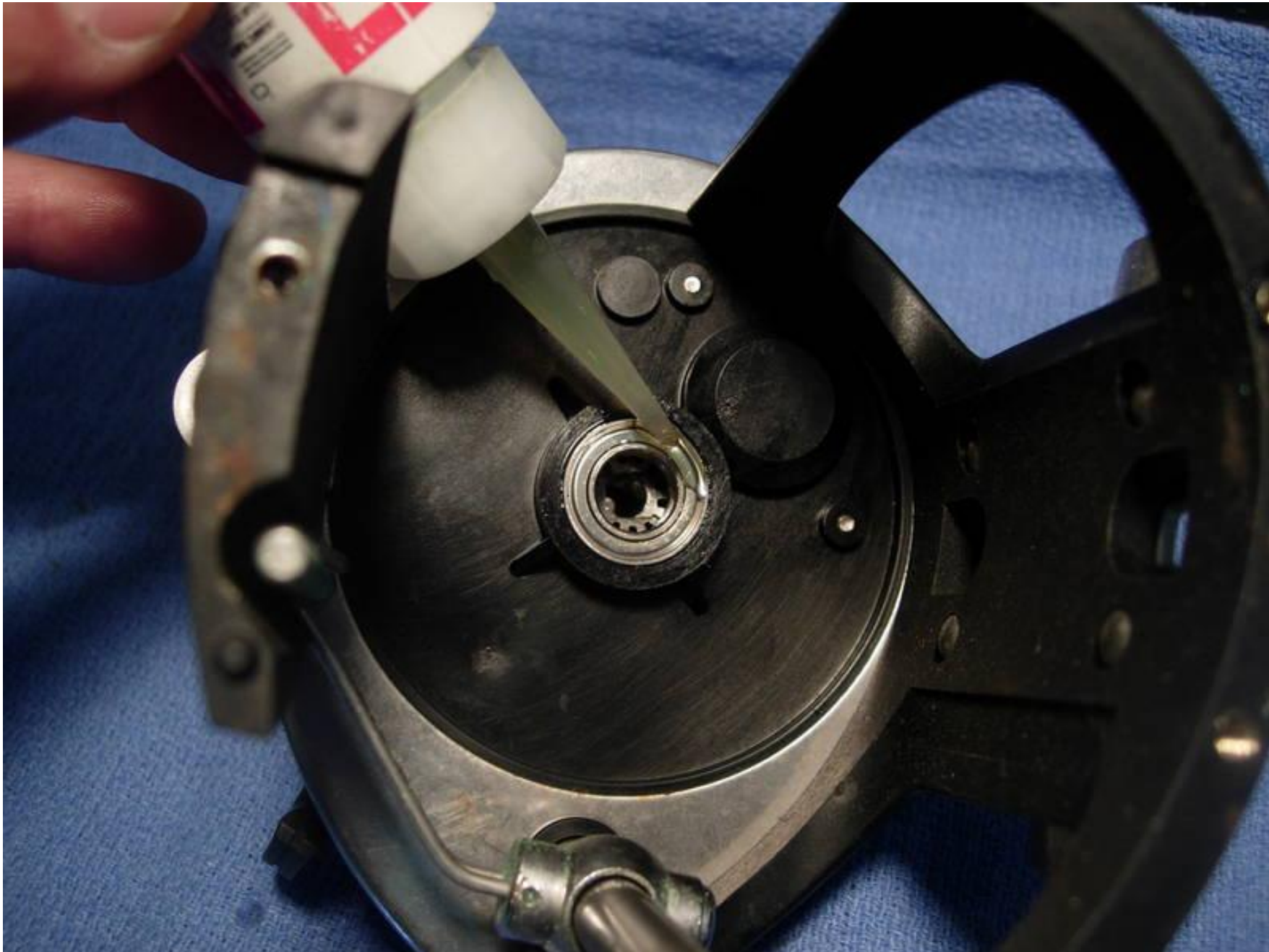


find the bearing washer (key #153) and set it aside.



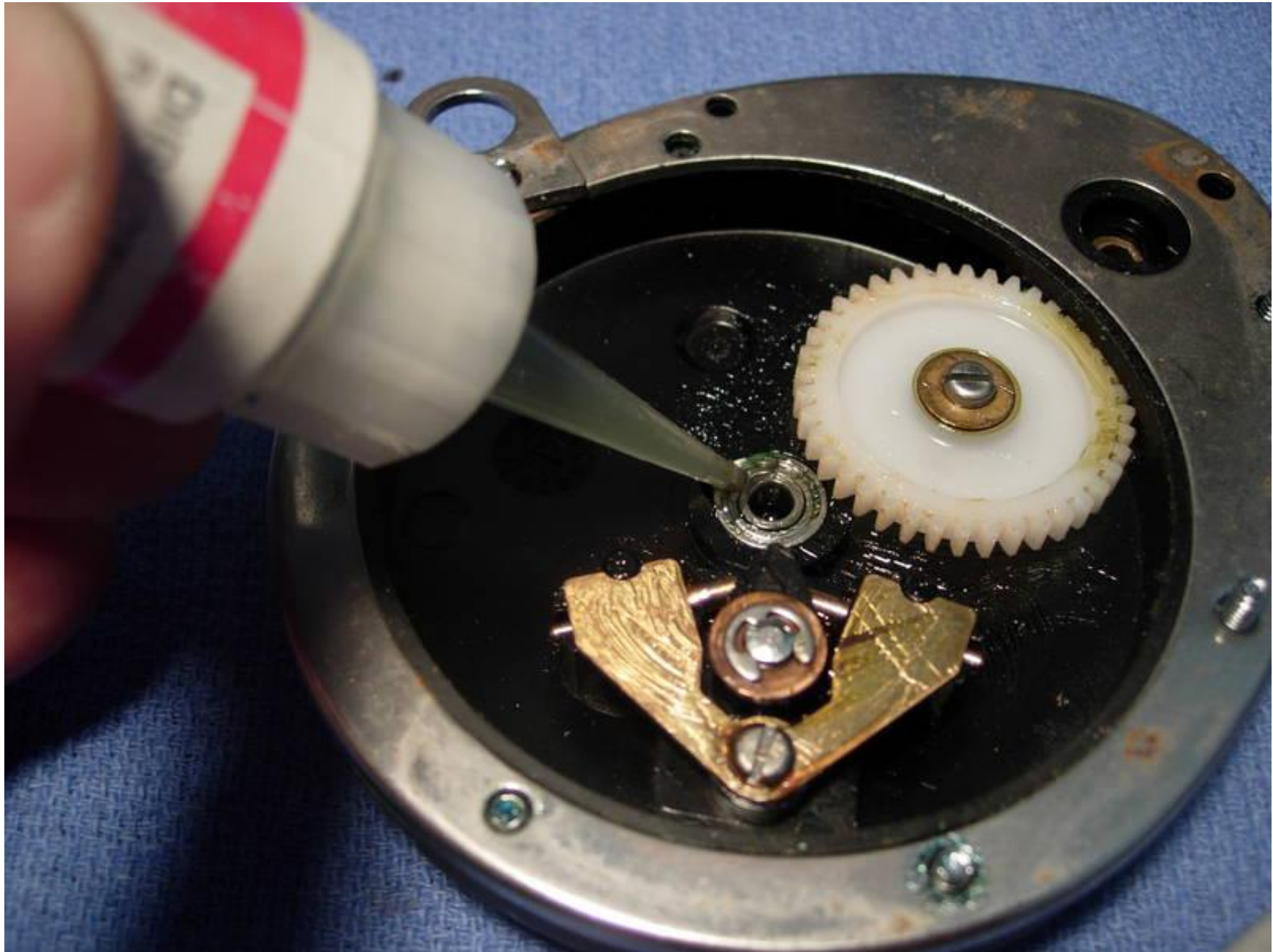


lube the right spool bearing (key #55).





lube the left spool bearing (key #40).



install the bearing washer (key #153), the spool (key #29L) and the left side plate (key #27). grease all the screw holes.









lube the worm gear (key #42).



now, for the right side plate. remove the handle lock screw (key #110).



remove the handle assembly screw (key #23).

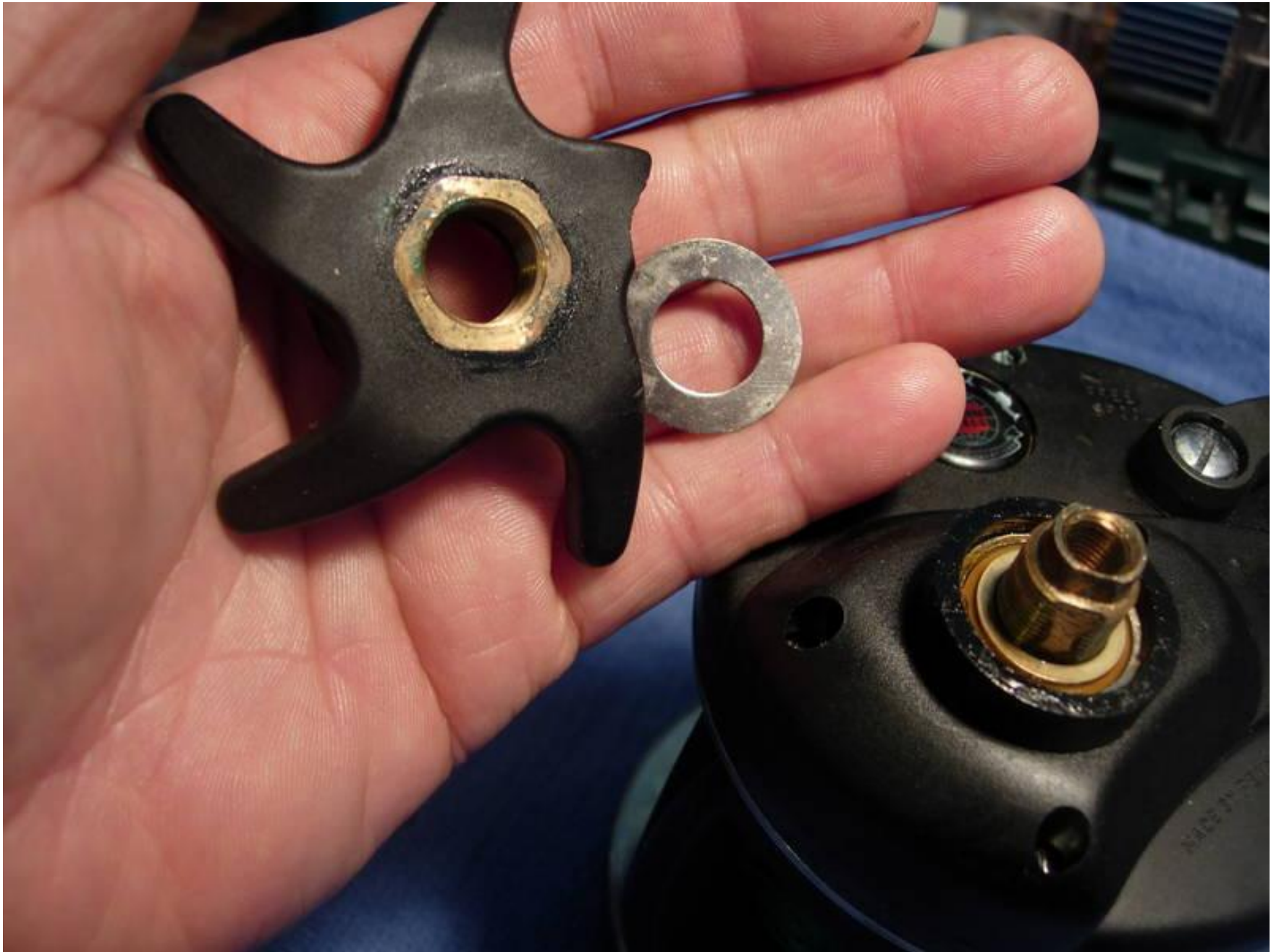




remove the handle assembly (key #24).



remove the tension spring (key #8) and star drag (key #10). i typically discard the spring.



ok, now this is important. see the gap here? the right side plate is actually two pieces, a right side OUTER plate (key #1) and a right side INNER plate (key #1B). to service the right side plate, you need to remove the outer plate and leave the inner plate in place. got it? good! ok, let's start!





remove the two long (key #31) and three short (key#38) right side plate screws. do not remove the spool tension control screw (key #26B) in the center or the eccentric screw (key #22).



carefully separate the outer plate from the inner plate.







if the gear sleeve (key #98S) is not badly burred, you can lift the gear cluster off in one piece. otherwise, you may have to pull the pieces off one at a time.

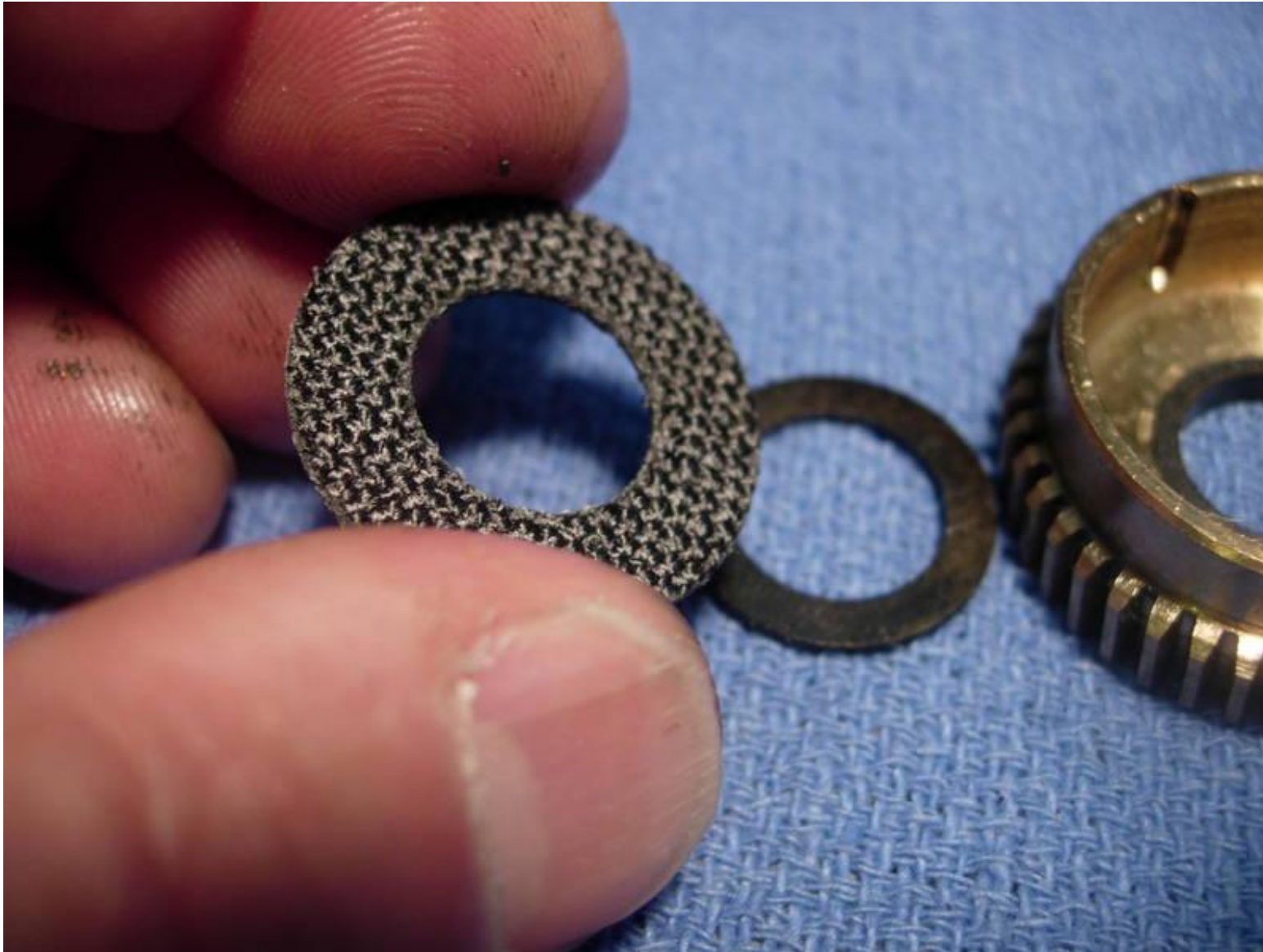


here is an exploded view of the gear cluster. going top left to bottom right, you have a fiber washer (key #4A), the 113h main gear (key #5), five 113h carbon fiber drag washers (key #6), five 113h metal washers (key #7), a belleville tension washer (key #18), a bearing washer (key #4), a bearing (key #55A), and another bearing washer (key #4).





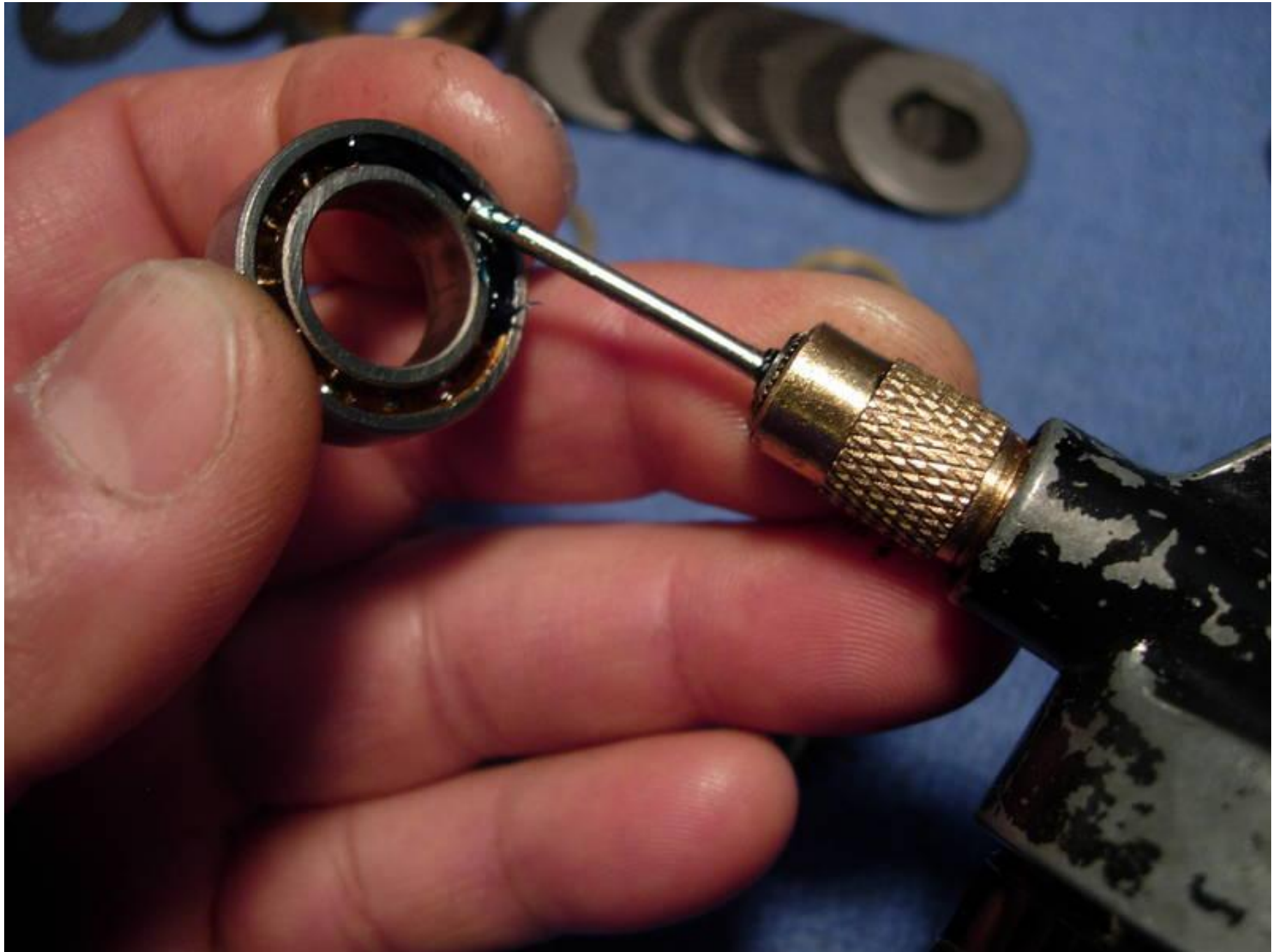
to eliminate the sticking caused by the fiber washer (key #4A), we are going to substitute a penn ht-100 drag washer (part #6-855). i have noted that these washers will soon be in short supply. there is no problem using a #6-113H washer. and honestly, if you don't need the drag to be super smooth, you can even leave the original fiber washer in.



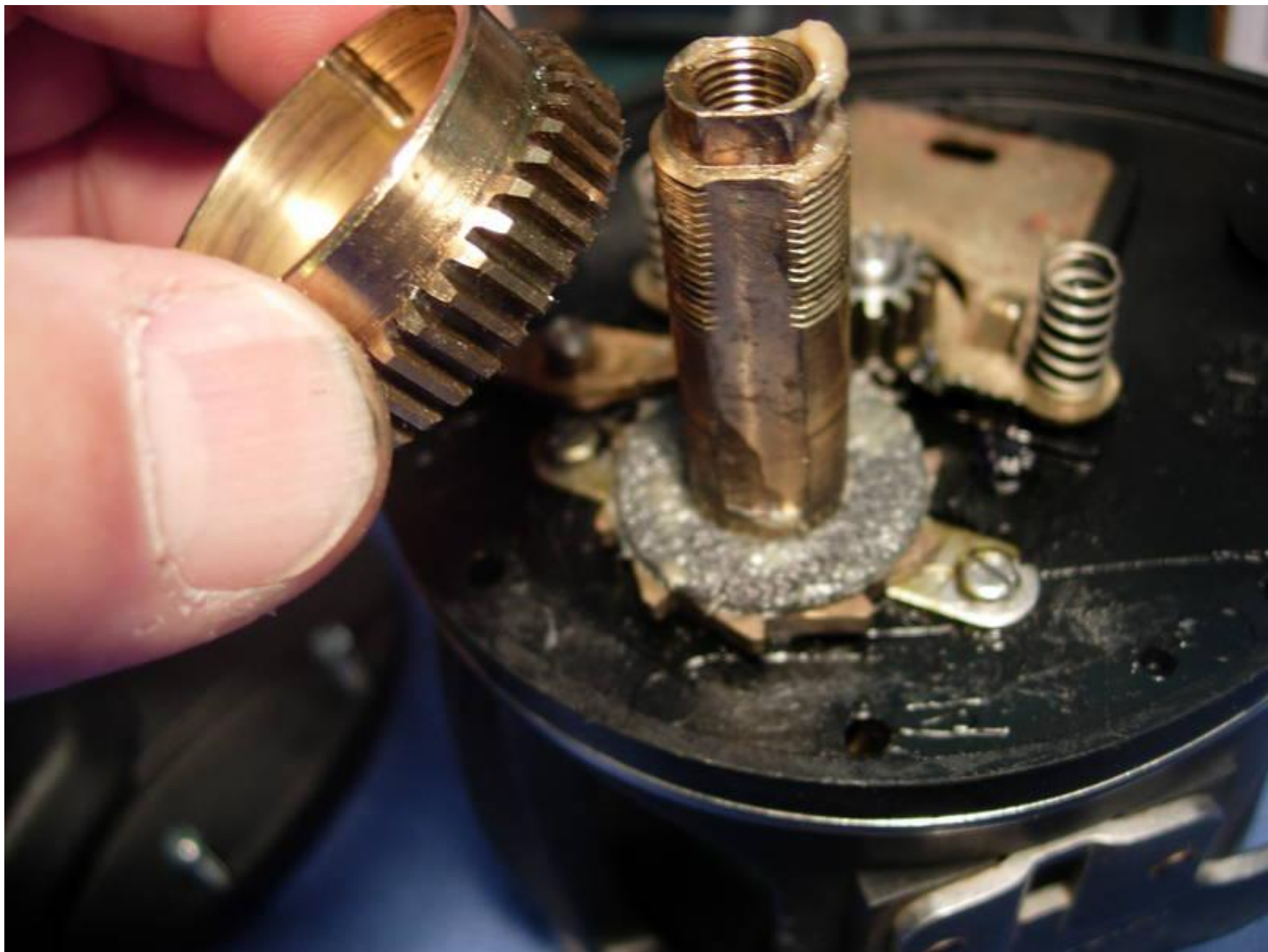


it is very important to properly service the gear sleeve bearing (key #55A). carefully remove the retaining rings and shields on both sides, pack the bearing with grease and replace the shields and retaining rings.





apply thick coat of cal's drag grease to each carbon fiber drag washer and rebuild the gear cluster.







place a small bead of grease in each screw hole.





carefully replace the right side outer plate (key #1) with the eccentric jack (key #11) in the "up" position and the eccentric lever (key #21) in the "back" or "free" position (not the "forward" or "in gear" position shown in the photo).





replace the long (key #31) and short (key #38) right side plate screws.



**install the star drag (key #10) and turn it down until it clears the shoulder of the gear sleeve (key #98S) to properly install the handle assembly (key #24).**



install the handle assembly (key #24).





install the handle assembly screw (key #23).



install the handle lock screw.





and you're done!





now for a couple of comments. the 340 and 345 gti's are basically 113hl and 113hlw's with a graphite frame and a levelwind assembly. these frames do not seem to be the most sturdy frames in the world. i've seen several frames come in pretty badly loosened up. not a good thing for a level wind reel. seriously not a good thing for a 4/0 sized levelwind reel. and for a reel of this size, it would be easy to blow out the levelwind assembly if the line tried to go one way and the leveler tried to go the other, particularly if the drags had seized up. regarding 4/0 sized reels in general, most guys are moving away from straight monofilament because of the stretch. with 100 feet of mono either straight out or straight down, it's like fishing with a giant rubber band. spectra is really the way to go. for spectra, a 4/0 sized reel is waaaayyyyyyy too big. if mono is all you have access to and a graphite levelwind reel suits your needs, go with the penn 330, 340 or 345 gti. if you have access to spectra, go with the 320 gti or gt2. the 320's have the best power to weight ratio in this series.