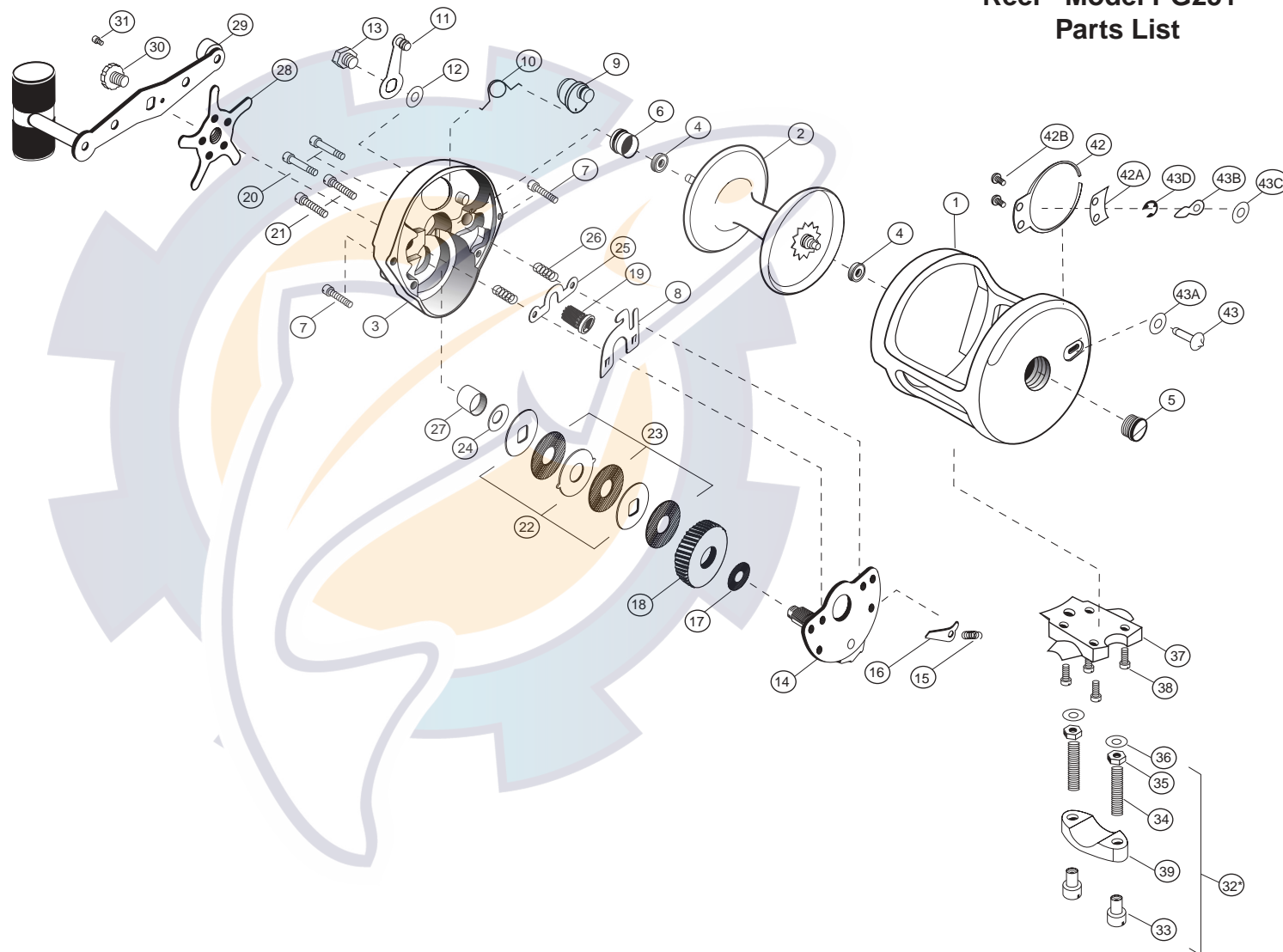




Reel - Model PG251 Parts List

KEY#	PART#	Description
1	(1-251)	Frame (251)
2	(2-251)	Spool
3	(3-251)	Endcap Right
4	(4-501)	Bearing
5	(5-502)	Bearing Cap (Left)
6	(6-203)	Bearing Cap (Right)
7	(7-204)	Endcap Screw (2)
8	(8-205)	Eccentric Jack
9	(9-206)	Eccentric
10	(10-207)	Eccentric Spring
11	(11-208)	Eccentric Lever
12	(12-509)	Nylon Washer
13	(13-510)	Eccentric Screw
14	(14-211)	Bridge
15	(15-212)	Dog
16	(16-213)	Dog Spring
17	(17-214)	Fiber Washer
18	(18-215)	Main Gear
19	(19-216)	Pinion Gear
20	(20-217)	Upper Bridge Screw (2)
21	(21-218)	Lower Bridge Screw (2)
22	(22-219)	Metal drag Washers (3)
23	(23-220)	Fiber Drag Washers (3)
24	(24-221)	Dome Washer
25	(25-222)	Yoke
26	(26-523)	Yoke Spring (2)
27	(27-224)	Drag Spacer
28	(28-225)	Star
29	(29-226)	251 Handle
30	(30-227)	Handle Screw
31	(31-528)	Handle Lock Screw
32	(32-229)	251 Lower Clamp Set*
33 *	(33-530)	T-Nut (2)
34 *	(34-531)	Lower Clamp Stud (2)
35 *	(35-532)	Lower Clamp Hex Nut (2)
36 *	(36-533)	Clamp Washer (2)
37	(37-234)	Upper Clamp
38	(38-535)	Upper Clamp Screws (4)
39 *	(39-238)	Lower Clamp
41	(41-541)	Pro Gear Wrench (not shown)
42	(42-242)	Clicker Spring
42A	(42A-542)	Clicker Spring Washer
42B	(42B-542)	Clicker Spring Screw
43	(43-543)	Clicker Knob
43A	(43A-543)	Clicker Knob Washer
43B	(43B-543)	Clicker Tongue
43C	(43C-543)	Clicker Tongue Washer
43D	(43D-543)	Clicker Knob E Clip



GENERAL MAINTENANCE

Do's

1. When changing the spool or cleaning your reel, back off the bearing cap before reassembling the endcap.
2. After cleaning your reel, lightly oil all moving parts.
3. Lightly lube between the frame and endcap before reinstalling.
4. If necessary, lightly oil the bearings with a recommended bearing oil.

Don'ts

1. Do not over-tighten the screws.
2. Do not immerse in water when cleaning.
3. Do not over lubricate.
4. Do not over tighten the bearing cap.

Please see your authorized **Pro Gear®** warranty station for complete service or parts.