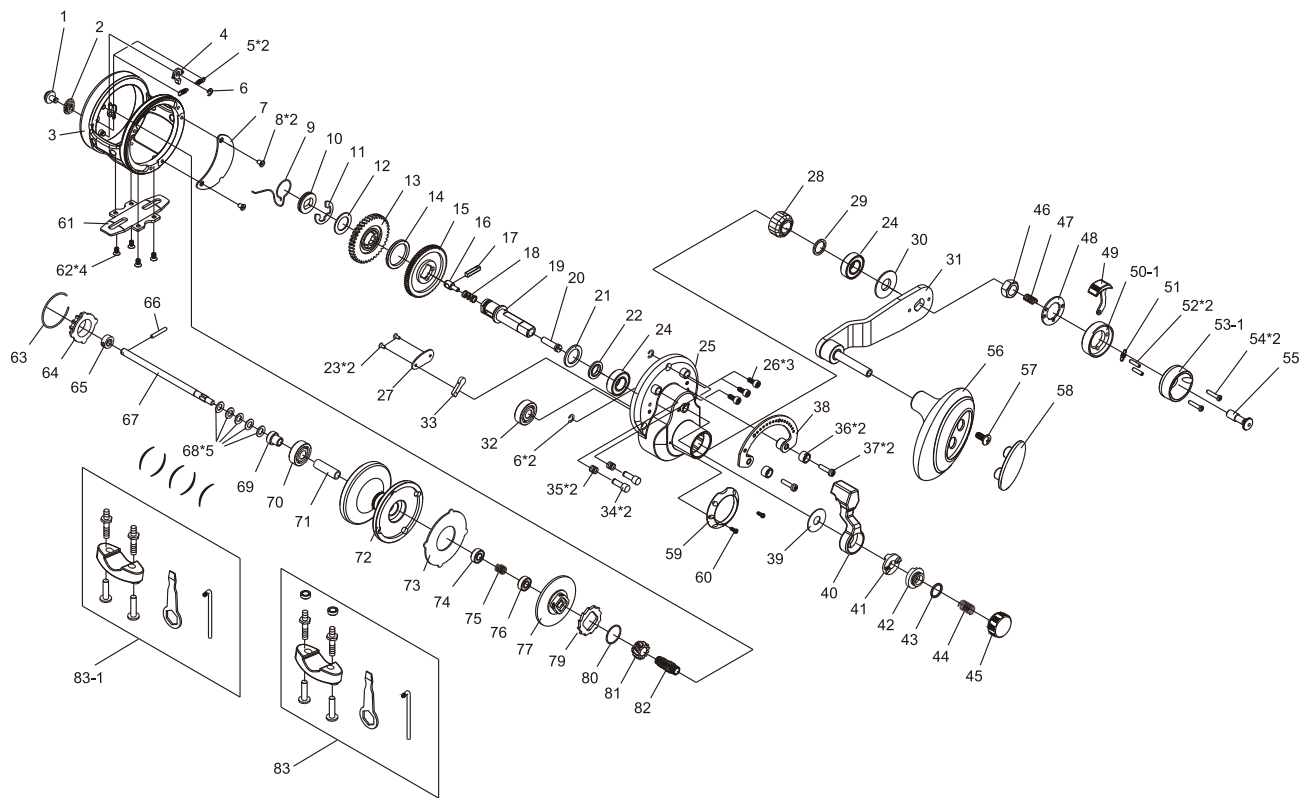


D-A-M Quick®

ROYAL LD 50 / 60 RH



NO Part Name

1	Click Button
2	Click Support
3	Frame(LD50)
3-1	Frame(LD60)
4	Click Pawl
5	Click Spring(x2)
6	E. Clip(x3)
7	Gear Cover
8	Cover Screw(x2)
9	Friction Ring
10	Friction Washer
11	E. Clip
12	Washer
13	Drive Gear(Low speed)
14	Washer(POM)
15	Drive Gear(High speed)
16	Screw Plunger
17	Drive Key
18	Shift Spring(Light)
19	Drive Shaft
20	Shift Plunger
21	Washer(POM)
22	Washer
23	Screw(x2)
24	Drive Shaft Ball Bearing(x2)
25	Right Side Plate
26	R(x3)ight Side Plate Screw
27	Dog Cover
28	One-Way Roller Bearing

NO Part Name

29	Washer
30	Washer
31	Handle Arm Assembly
32	Pinion Ball Bearing
33	Dog
34	Locating Button(x2)
35	Spring(x2)
36	Stopper(x2)
37	Screw(x2)
38	Click Plate
39	Teflon Washer
40	Brake Lever
41	Lifter
42	Brake Cam
43	O-Ring
44	Spring
45	Pre-Set Knob
46	Handle Nut
47	Shift Spring(Heavy)
48	Washer
49	Shift Bottom (High)
50-1	Handle Nut Reatiner
51	Spring
52	Pin(x2)
53-1	Shift Housing
54	Screw(x2)
55	Shift Bottom (Low)
56	Handle Knob
57	Handle Knob Screw

NO Part Name

58	Handle Knob Cap
59	Sequin
60	Screw (x2)
61	Reel Foot(LD50)
61-1	Reel Foot(LD60)
62	Reel Foot Screw (x4)
63	C-Clip
64	Line Out Alarm Cog. Wheel
65	Shaft Shoulder
66	Shaft Pin
67	Spool Shaft(LD50)
67-1	Spool Shaft(LD60)
68	Disc Spring Washer(x5)
69	Bushing
70	Ball Bearing
71	Tube(LD50)
71-1	Tube(LD60)
72	Spool(LD50)
72-1	Spool(LD60)
73	Carbon Fiber Brake Washer
74	Ball Bearing
75	Spring
76	Ball Bearing
77	Brake Disc
79	Ratchet Gear
80	C-Clip
81	Pinion Gear(Low speed)
82	Pinion Gear(High speed)
83	Rod Clamp Hardware (LD50)
83-1	Rod Clamp Hardware (LD60)