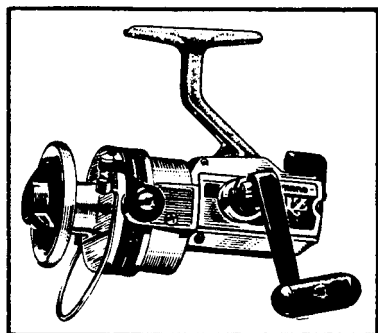


# SHIMANO

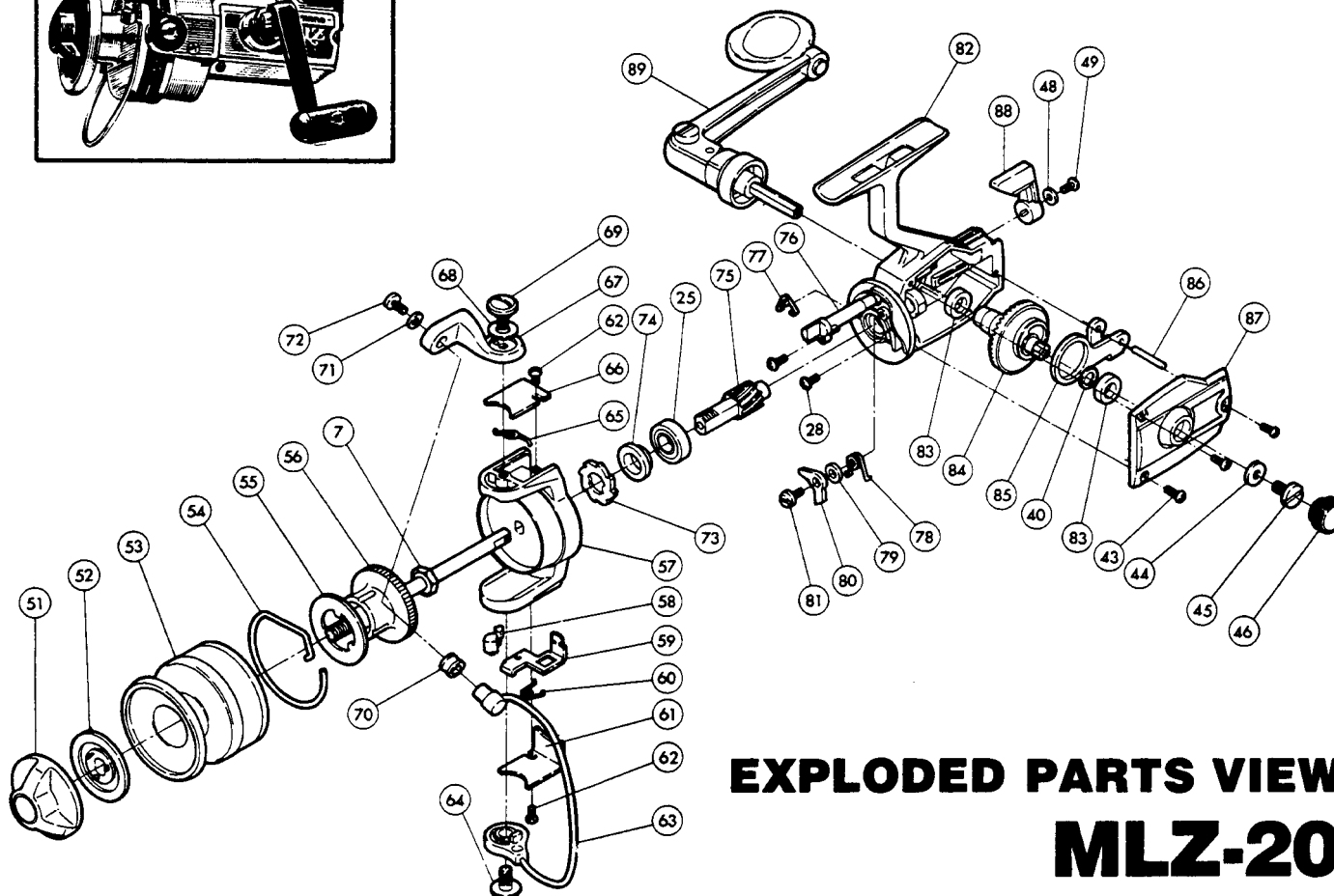
## 1987 REPAIR MANUAL SHEET MLZ-20

Shimano American Corporation, One Shimano Dr  
Irvine, CA 92718



### TO ORDER:

This reel belongs to the "MLX, MLZ" series.  
Please order parts using the abbreviation  
"MLX" and the part number.



## EXPLODED PARTS VIEW MLZ-20

### PARTS LIST

#### PART# DESCRIPTION

7 Rotor nut  
25 Ball bearing  
28 Bearing retainer screw  
40 Drive gear spacer (optional)  
43 Side plate screw  
44 Lock washer  
45 Handle screw  
46 Dust cap  
48 Anti reverse lever lock wash  
49 Anti reverse lever screw  
51 Drag adjusting knob  
52 Drag disk  
53 Spool shell  
54 Click spring  
55 Base drag washer  
56 Spindle  
57 Rotor

#### PART# DESCRIPTION

58 Trip plate cam  
59 Trip plate  
60 Trip plate spring  
61 Trip plate cover  
62 Cover screw  
63 Bail wire  
64 Bail wire screw  
65 Bail spring  
66 Bail spring cover  
67 Bail mount  
68 Bail mount washer (opt.)  
69 Bail mount screw  
70 Roller line guide  
71 Lock washer  
72 Bail wire screw  
73 Anti reverse ratchet

#### PART# DESCRIPTION

74 Anti reverse ratchet spacer  
75 Pinion gear  
76 Anti reverse shaft  
77 Anti reverse shaft spring  
78 Anti reverse dog spring  
79 Anti reverse dog spacer  
80 Anti reverse dog  
81 Anti reverse dog screw  
82 Housing  
83 Drive gear bushing  
84 Drive gear  
85 Oscillation guide  
86 Oscillation guide pin  
87 Side plate  
88 Anti reverse lever  
89 Handle