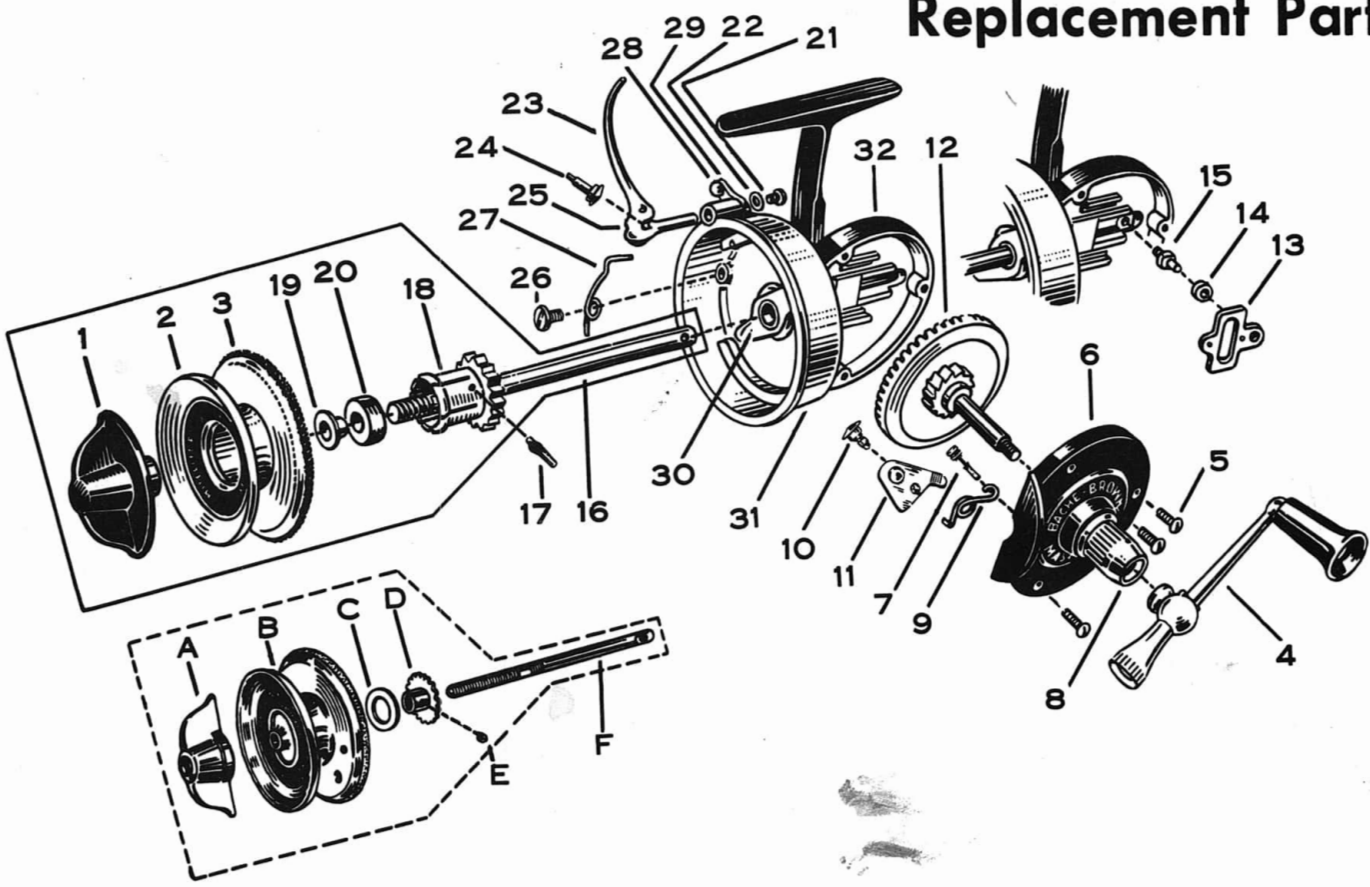


AIREX MASTEREEL No. 310 Models 2B & 3 Replacement Parts



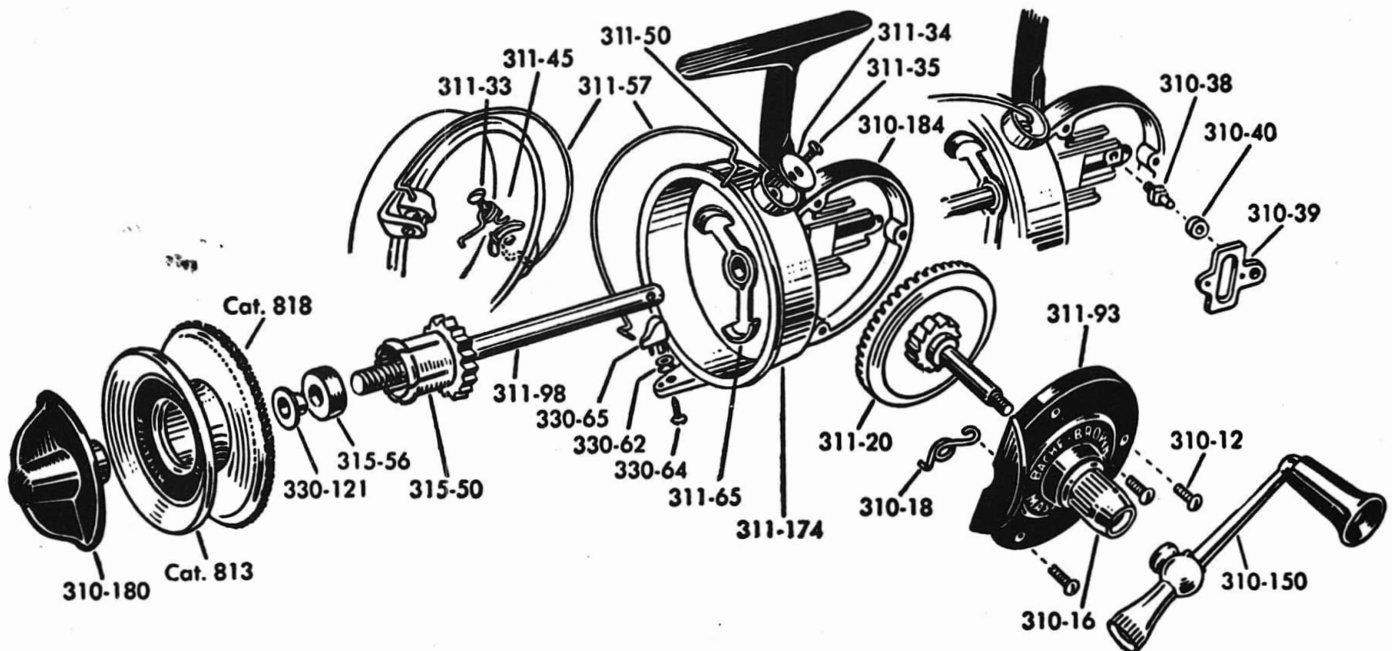
REF.	PART NO.	NAME	PRICE	REF.	PART NO.	NAME	PRICE
1	5310-180	BRAKE WING-NUT	\$.30	20	5315-56	BRAKE BUSHING	.10
2	CAT. 813	SPOOL	1.50	21	5310-74	FINGER SCREW	.10
3	CAT. 818	CHENILLE WIRE, 6 PCS.	.25	22	5315-63	FINGER LOCK-WASHER	.10
4	5310-150	HANDLE ASSEMBLY	1.00	23	5831	PICK-UP FINGER ASSY.	2.50
5	5310-12	COVER SCREW	.10	24	5310-76	FINGER ROLLER STUD	.10
6	5311-93	COVER & ANTI-REVERSE ASSEMBLY	1.75	25	5310-72	FINGER ROLLER	.10
		(SUPERSEDES 5310-139)*		26	5315-33	FINGER RETURN SPRING SCREW	.10
7	5310-15	ANTI-REVERSE PIN	.10	27	5315-30	FINGER RETURN SPRING	.10
8	5310-16	ANTI-REVERSE SLEEVE	.30	28	5310-75	FINGER RETURN BUTTON	.10
9	5310-18	ANTI-REVERSE SPRING	.10	29	5310-64	FINGER RETURN	.20
10	5315-15	DRIVE STUD	.10	30	5315-65	FINGER RETURN ARM & SLEEVE ASSEMBLY	1.00
11	5310-14	ANTI-REVERSE PAWL	.10	31	5310-174	CUP & BUSHING ASSEMBLY	1.75
12	5310-20	DRIVE GEAR & SHAFT ASSEMBLY	.85		5310-47	CUP BUSHING (NOT SHOWN)	.20
13	5310-39	ECCENTRIC YOKE	.10	32	5310-184	HOUSING (SUPERSEDES 5310-96)*	1.50
14	5310-40	ECCENTRIC ROLLER	.10	A	5310-54	BRAKE WING-NUT (NOT AVAILABLE)	---
15	5310-38	ECCENTRIC STUD	.10	B	CAT. 810	SPOOL	1.50
16	5310-98	MAIN SHAFT & CLICK GEAR ASSEMBLY	1.25	C	5310-81	BRAKE WASHER	.10
17	5310-163	BRAKE PIN (SUPERSEDES 5315-52)*	.10	D	5310-52	CLICK GEAR	.25
18	5315-50	NYLON BRAKE (CLICK GEAR)	.50	E	5310-48	CLICK GEAR SCREW	.10
19	5330-121	EYELET	.10	F	5310-77	SPOOL SHAFT (NOT AVAILABLE)	---

*INTERCHANGEABLE

AIREX CORPORATION
 DIVISION OF THE LIONEL CORPORATION
 28 SAGER PLACE
 IRVINGTON 11, NEW JERSEY

AIREX MASTEREEL ARISTOCRAT No. 311

Replacement Parts

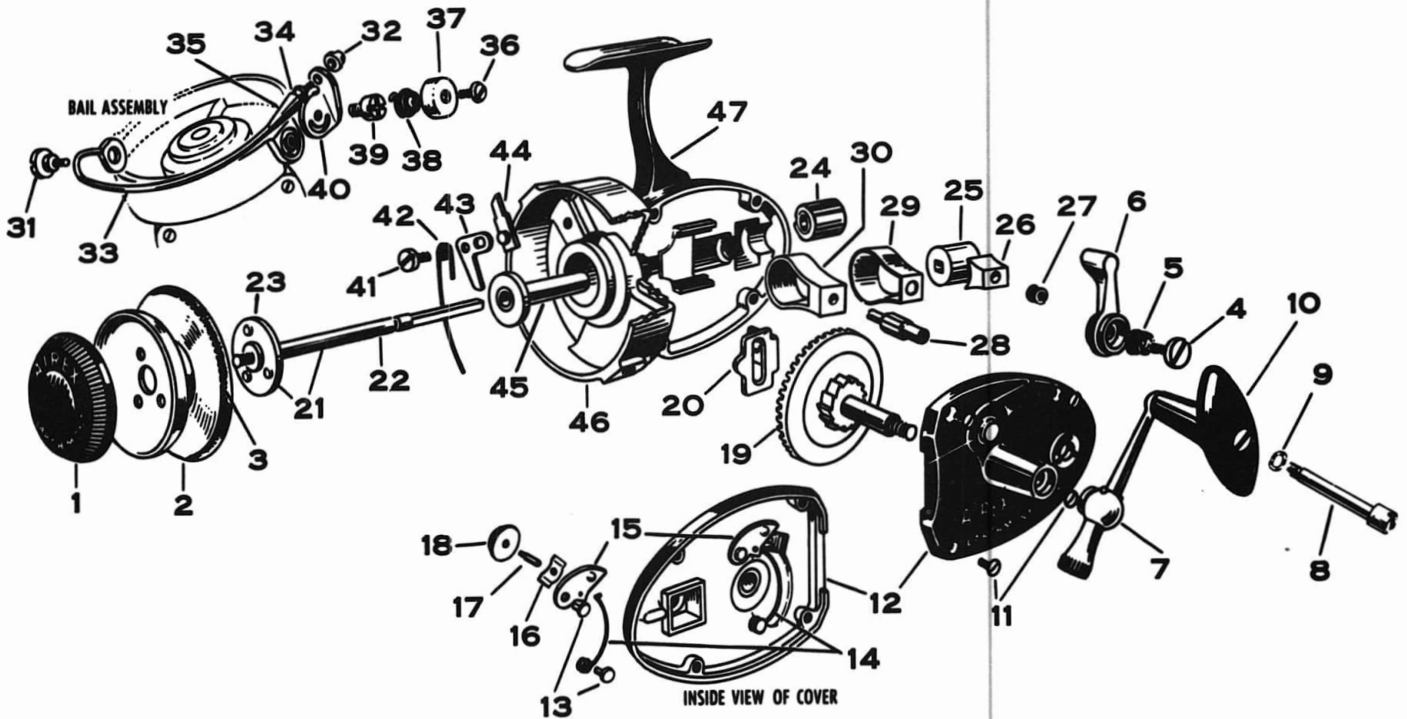


REF.	PART NO.	NAME	PRICE	REF.	PART NO.	NAME	PRICE
1	5310-180	BRAKE WING-NUT	\$.30	18	5315-50	NYLON BRAKE (CLICK GEAR)	.50
2	CAT. 813	SPOOL	1.50	19	5330-121	EYELET	.10
3	CAT. 818	CHENILLE WIRE (6 PCS)	.25	20	5315-56	BRAKE BUSHING	.10
4	5310-150	HANDLE ASSEMBLY	1.00	21	5330-64	BAIL ROLLER SCREW	.15
5	5310-12	COVER SCREW	.10	22	5330-62	BAIL ROLLER	.15
6	5311-93	COVER & ANTI-REVERSE ASSEMBLY	1.75	23	5311-38	BAIL ROLLER CAP (SUPERSEDES 5330-65-INTERCHANGEABLE)	.35
7	5310-15	ANTI-REVERSE PIN	.10	24	5311-35	BAIL COVER SCREW	.10
8	5310-16	ANTI-REVERSE SLEEVE	.30	25	5311-34	BAIL COVER	.25
9	5310-18	ANTI-REVERSE SPRING	.10	26	5311-50	BAIL DETENT SPRING	.10
10	5315-15	DRIVE STUD	.10	27	5311-57	BAIL	2.10
11	5310-14	ANTI-REVERSE PAWL	.10	28	5311-45	BAIL SPRING	.15
12	5311-20	DRIVE GEAR & SHAFT	1.00	29	5311-33	BAIL SPRING SCREW	.10
13	5310-39	ECCENTRIC YOKE	.10	30	5311-65	BAIL RETURN ARM AND SLEEVE ASSEMBLY	1.20
14	5310-40	ECCENTRIC ROLLER	.10	31	5311-174	CUP & BUSHING-PINION ASSEMBLY	2.25
15	5310-38	ECCENTRIC STUD	.10	32	5310-184	HOUSING	1.50
16	5311-98	MAIN SHAFT & CLICK GEAR ASSEMBLY	1.35		5311-200	BEARING WASHER (NOT SHOWN)	
17	5310-163	BRAKE PIN	.10				

AIREX CORPORATION
 DIVISION OF THE LIONEL CORPORATION
 28 SAGER PLACE
 IRVINGTON 11, NEW JERSEY

AIREX LARCHMONT No. 312 Model 1

Replacement Parts

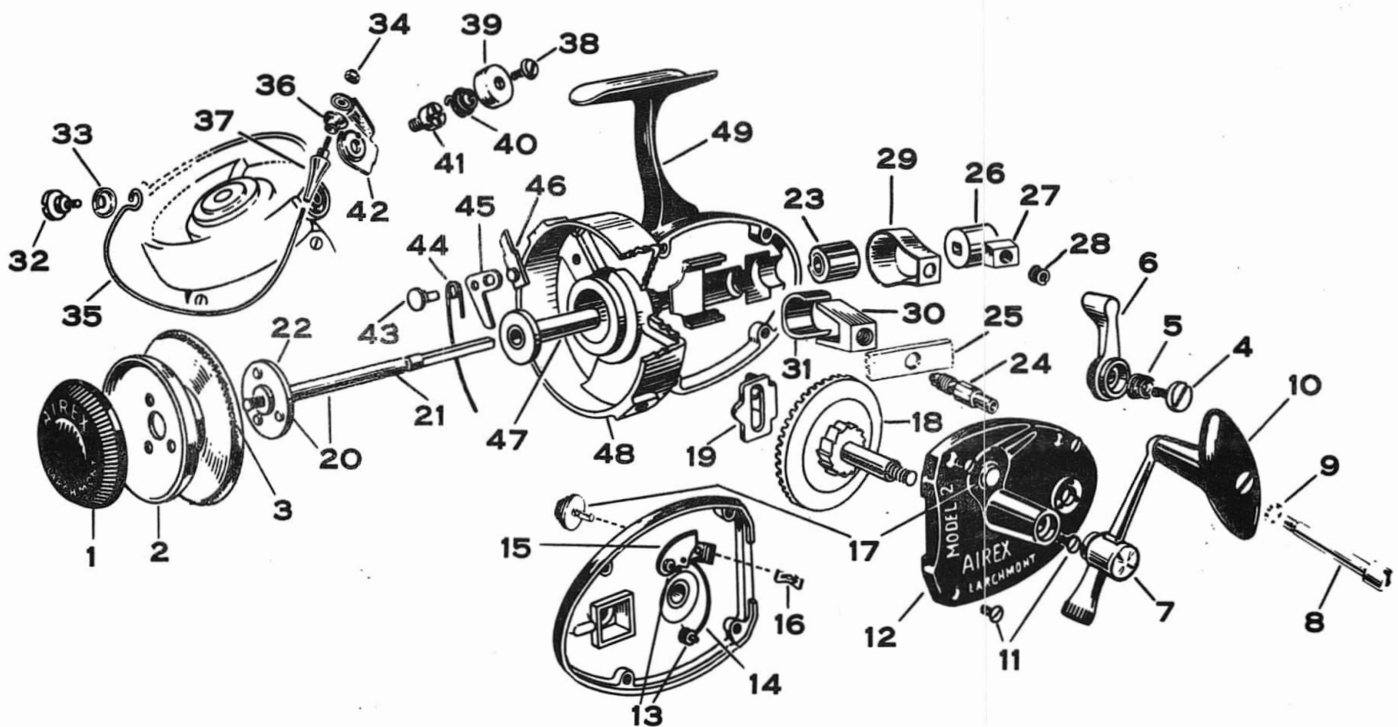


REF.	PART NO.	NAME	PRICE	REF.	PART NO.	NAME	PRICE
1	5312-52	SPOOL NUT	\$.50	25	5312-39	BRAKE DRUM	.50
2	CAT. 814	SPOOL	1.50	26	5312-37	BRAKE SHOE	.10
3	CAT. 818	CHEVILLE WIRE (1/2 DZ)	.25	27	5312-114	BRAKE SHOE SPRING	.10
4	5312-50	DRAG LEVER SCREW	.20	28	5312-40	DRAG LEVER STUD	.25
5	5312-49	DRAG LEVER SPRING	.10	29	5312-105	BRAKE BAND RETAINER	.30
6	5312-77	DRAG LEVER	.40	30	5312-88	BRAKE BAND (FULL)	.50
7	5312-56	HANDLE ASSEMBLY	1.60	31	5312-31	BAIL PIVOT SCREW	.20
8	5312-59	GRIP SCREW	.25	32	5312-30	BAIL NUT	.15
9	5312-135	GRIP WASHER	.10	33	5312-69	BAIL	2.25
10	5325-35	GRIP	.35	34	5312-112	ROLLER	.20
11	5312-91	COVER SCREW	.10	35	5312-26	BAIL ADAPTER	.25
12	5312-44	COVER & ANTI-REVERSE ASSEMBLY	2.15	36	5311-35	BAIL SPRING COVER SCREW	.10
13	5325-12	DRIVE STUD	.10	37	5312-18	BAIL SPRING COVER	.25
14	5325-13	PAWL SPRING	.15	38	5312-187	BAIL SPRING	.15
15	5312-103	PAWL	.15	39	5312-27	BAIL BRACKET STUD	.30
16	5312-85	BUTTON SPRING	.10	40	5312-16	BAIL BRACKET	.35
17	5312-84	STUD	.10	41	5312-131	LINK SCREW	.15
18	5312-96	BUTTON	.20	42	5312-22	BAIL RELEASE SPRING	.20
19	5312-197	MAIN GEAR & SHAFT	1.15	43	5312-14	BAIL RELEASE LINK	.15
20	5312-19	YOKE	.25	44	5312-20	BAIL LOCK	.25
21	5312-41	SHAFT & LOCATOR ASSY.	1.90	45	5312-65	SLEEVE & RETAINER ASSEMBLY	1.10
22	5312-42	SHAFT	1.35	46	5312-8	CUP & PINION ASSEMBLY	2.75
23	5312-81	LOCATOR	.35	47	5312-13	HOUSING	2.50
24	5312-76	SHAFT BEARING	.35				

AIREX CORPORATION
 DIVISION OF THE LIONEL CORPORATION
 28 SAGER PLACE
 IRVINGTON 11, NEW JERSEY

AIREX LARCHMONT No. 312 Model 2

Replacement Parts

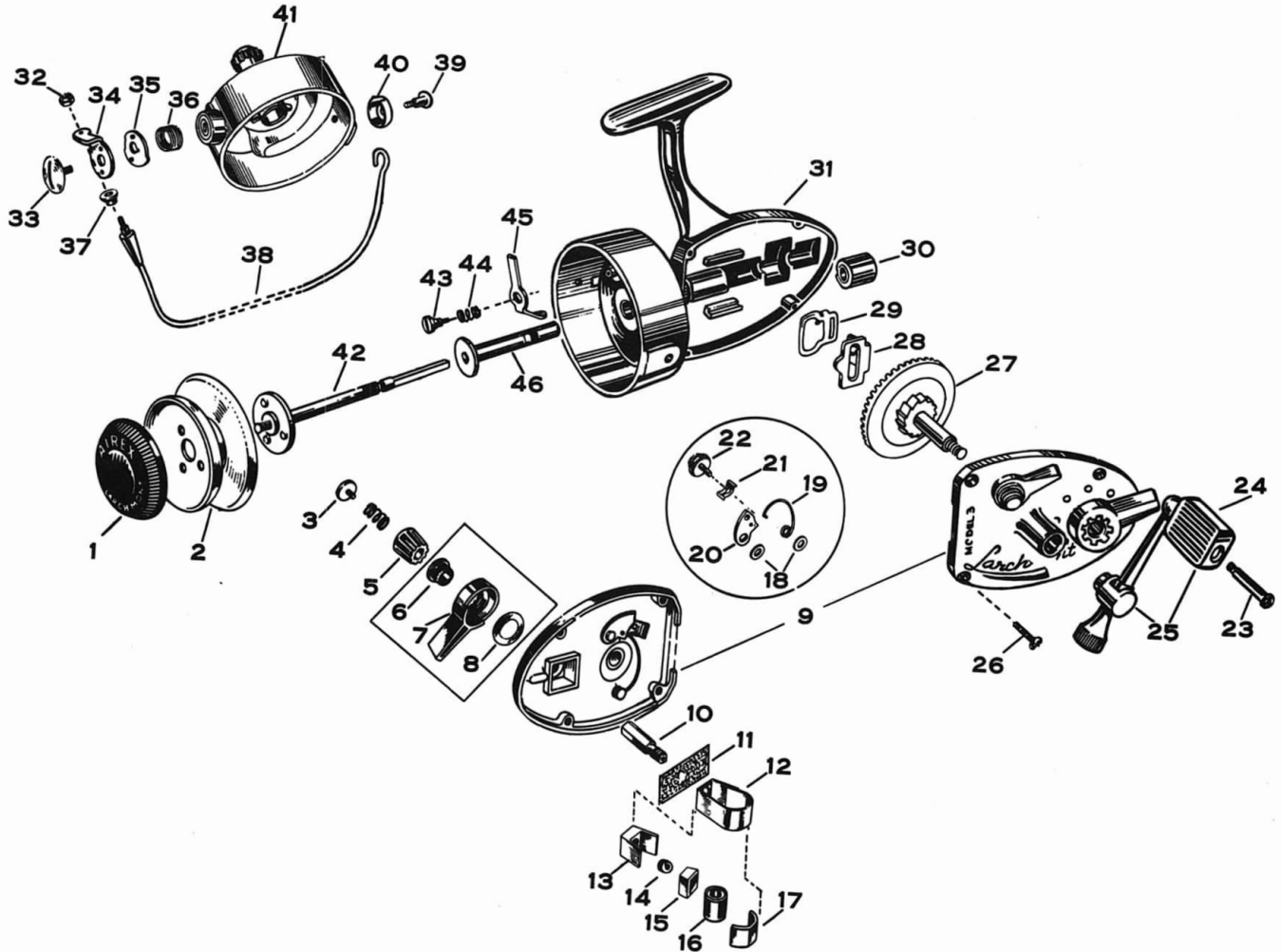


REF. #	PART #	PART NAME	PRICE	REF. #	PART #	PART NAME	PRICE
1	5312-157	SPOOL NUT	.50	26	5312-181	BRAKE DRUM	.50
2	CAT. #814	SPOOL	1.50	27	5312-195	BRAKE SHOE ASSEMBLY	.25
3	CAT. #818	CHENILLE WIRE (1/2 DOZEN)	.25	28	5312-114	BRAKE SHOE SPRING	.10
4	5312-147	DRAG LEVER SCREW	.20	29	5312-105	BRAKE BAND RETAINER	.30
5	5312-148	DRAG LEVER SPRING	.10	30	5312-183	BRAKE BAND (SEM 1)	.25
6	5312-146	DRAG LEVER	.40	31	5312-180	BRAKE	.25
7	5312-161	HANDLE ASSEMBLY	1.60	32	5316-45	BAIL PIVOT SCREW	.20
8	5312-136	GRIP SCREW	.25	33	5316-48	BAIL LOOP CAP	.15
9	5312-135	GRIP WASHER	.10	34	5312-189	BAIL NUT	.15
0	5325-35	GRIP	.35	35	5312-213	BAIL	2.25
1	5325-120	COVER SCREW	.10	36	5312-178	ROLLER	.20
2	5312-179	COVER & ANTI-REVERSE ASSEM.	2.15	37	5312-177	BAIL ADAPTER	.25
3	5312-141	RETAINING WASHER	.05	38	5312-176	BAIL SPRING COVER SCREW	.10
4	5325-13	PAWL SPRING	.15	39	5312-18	BAIL SPRING COVER	.25
5	5312-103	PAWL	.15	40	5312-187	BAIL SPRING	.15
6	5312-137	BUTTON SPRING	.10	41	5312-175	BAIL BRACKET STUD	.30
7	5312-140	BUTTON ASSEMBLY	.35	42	5312-174	BAIL BRACKET	.35
8	5312-197	MAIN GEAR & SHAFT	1.15	43	5312-207	LINK RIVET	.10
9	5312-130	YOKE	.25	44	5312-22	BAIL RELEASE SPRING	.20
10	5312-196	SHAFT & LOCATOR ASSEMBLY	1.90	45	5312-128	BAIL RELEASE LINK	.15
11	5312-150	SHAFT	1.35	46	5312-188	BAIL LOCK	.25
12	5312-203	LOCATOR	.35	47	5312-191	SLEEVE & RETAINER ASSEMBLY	1.10
13	5312-76	SHAFT BEARING	.35	48	5312-192	CUP & PINION ASSEMBLY	2.75
14	5312-133	DRAG LEVER STUD	.50	49	5312-13	HOUSING	2.50
15	5312-198	FELT WASHER	.10				

AIREX CORPORATION
 DIVISION OF THE LIONEL CORPORATION
 28 SAGER PLACE
 IRVINGTON 11, NEW JERSEY

Printed in U.S. of America

AIREX LARCHMONT No. 312 Model 3 Replacement Parts

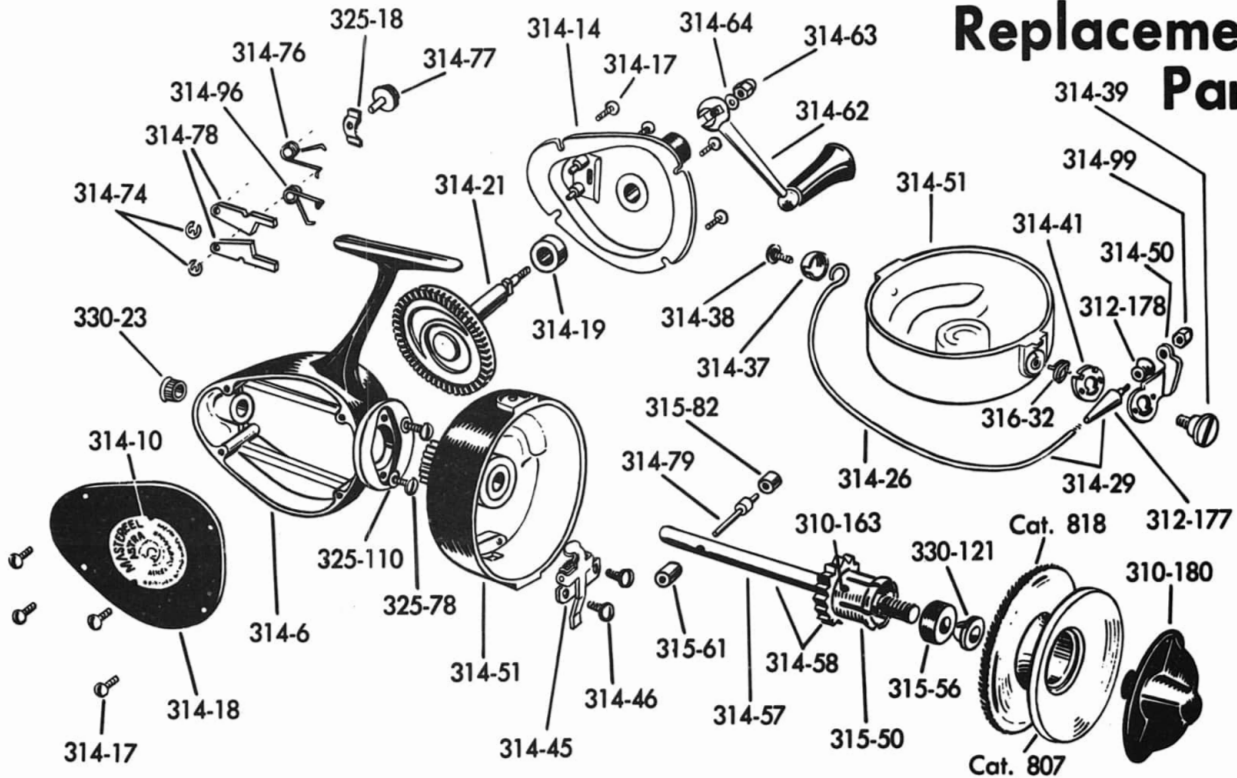


REF. PART NO.	PART NO.	PART NAME	PRICE	REF. PART NO.	PART NO.	PART NAME	PRICE
1	5312-157	Spool Nut	.50	25	5312-265	Handle Assembly	1.60
2	Cat. No. 814	Spool	1.50	26	5325-120	Cover Screw	.10
3	5350-84	Drag Screw	.20	27	5312-197	Main Gear & Shaft	1.15
4	5350-83	Drag Knob Spring	.10	28	5312-266	Yoke	.35
5	5312-267	Drag Knob	.50	29	5312-269	Click Spring	.35
6	5350-11	Drag Lever Bushing	.20	30	5312-76	Main Shaft Bearing	.35
7	5312-248	Drag Lever	.75	31	5312-272	Housing	2.75
8	5350-37	Drag Lever Washer	.10	32	5314-99	Bail Nut	.10
9	5312-258	Cover Assembly	3.50	33	5312-246	Bail Bracket Screw	.25
10	5350-39	Drag Shaft	.40	34	5312-238	Bail Bracket	.35
11	5312-198	Felt Pad	.10	35	5312-240	Cam Lock	.30
12	5312-105	Brake Band Retainer	.30	36	5317-14	Bail Return Spring	.10
13	5312-183	Brake Band	.25	37	5312-237	Roller	.30
14	5312-114	Brake Shoe Spring	.15	38	5312-233	Bail	2.50
15	5312-195	Brake Shoe Assembly	.25	39	5312-247	Bail Cap Screw	.15
16	5312-181	Brake Drum	.50	40	5314-37	Bail Cap	.10
17	5312-180	Brake	.25	41	5312-288	Cup & Pinion Assembly	3.00
18	5312-141	Washer	.10	42	5312-290	Main Shaft Assembly	2.15
19	5325-13	Pawl Spring	.15	43	5312-264	Lock Lever Screw	.20
20	5350-102	Pawl	.15	44	5312-243	Lock Lever Spring	.10
21	5312-137	Button Spring	.10	45	5312-241	Lock Lever	.30
22	5312-140	Anti-Reverse Button	.20	46	5312-255	Sleeve & Retainer Assembly	1.35
23	5312-249	Handle Screw	.25	47	Cat. No. 818	Chenille Wire	6 for .25
24	5322-19	Handle Grip	.20		5312-299	Spool Washer (Not Shown)	.15

AIREX CORPORATION
DIVISION OF THE LIONEL CORPORATION
28 Sager Place, Irvington 11, N.J.

AIREX MASTEREEL ASTRA No. 314

Replacement Parts



PART NO.	NAME	PRICE	PART NO.	NAME	PRICE
5310-163	BRAKE PIN	\$.10	5314-57	SHAFT	1.00
5310-180	BRAKE WING NUT	.30	5314-58	SHAFT & CLICK GEAR ASSY.	1.60
5312-177	BAIL ADAPTER	.25	5314-62	HANDLE ASSEMBLY	.90
5312-178	BAIL ROLLER	.20	5314-63	HANDLE NUT	.15
5314-6	HOUSING & BUSHING ASSEMBLY	1.50	5314-64	HANDLE WASHER	.10
5314-10	NAMEPLATE	.10	5314-74	RETAINING RING	.10
5314-14	COVER & HUB ASSEMBLY	1.35	5314-76	PAWL SPRING (L. H.)	.10
5314-17	COVER SCREW	.10	5314-77	ANTI-REVERSE BUTTON	.20
5314-18	COVER & CHANNEL ASSEMBLY	1.00	5314-78	ANTI-REVERSE PAWL	.15
5314-19	GEAR THRUST WASHER	.10	5314-79	ECCENTRIC STUD	.15
5314-21	MAIN GEAR & SHAFT ASSEMBLY	1.10	5314-99	BAIL NUT	.10
5314-26	BAIL	1.50	5315-50	CLICK GEAR	.50
5314-29	BAIL & ADAPTER ASSEMBLY	1.75	5315-56	BRAKE BUSHING	.10
5314-34	BAIL RETURN SPRING (R.H. WIND)	.10	5315-61	ECCENTRIC GUIDE ROLLER (LONG)	.10
5314-37	BAIL LOOP CAP	.10	5315-82	ECCENTRIC GUIDE ROLLER (SHORT)	.10
5314-38	BAIL LOOP CAP SCREW	.20	5316-32	BAIL RETURN SPRING (L.H. WIND)	.10
5314-39	BAIL BRACKET SCREW	.10	5325-18	ANTI-REVERSE BUTTON SPRING	.10
5314-41	BAIL CAM LOCK	.15	5325-78	CUP BUSHING SCREW	.10
5314-45	CAM LOCK BRACKET ASSEMBLY	.50	5325-110	CUP BUSHING SCREW WASHER	.10
5314-46	CAM LOCK BRACKET SCREW	.10	5330-23	HOUSING CAP	.20
5314-49	BAIL BRACKET (R. H. WIND)	.10	5330-121	EYELET	.10
5314-50	BAIL BRACKET (L. H. WIND)	.10	CAT. 807	SPOOL	1.50
5314-51	CUP, PINION & BUSHING ASSY.	2.00	CAT. 818	CHENILLE WIRE (1/2 DZ.)	.25

SERVICE PARTS (NOT INDICATED)

5314-40	CAM LOCK BRACKET	.15	5314-54	CUP	1.40
5314-42	CAM LOCK BRACKET SPRING	.15	5314-72	ANTI-REVERSE PLATE	.15
5314-43	CAM LOCKING LEVER	.10	5314-73	ANTI-REVERSE STUD	.10
5314-44	CAM LOCKING LEVER RIVET	.10	5314-81	ECCENTRIC GUIDE CHANNEL	.10
5314-47	BAIL LOOP CAP STUD	.10	5314-83	ECCENTRIC GUIDE CHANNEL RIVET	.10
5314-48	PINION GEAR	.35	5325-57	BUSHING	.15

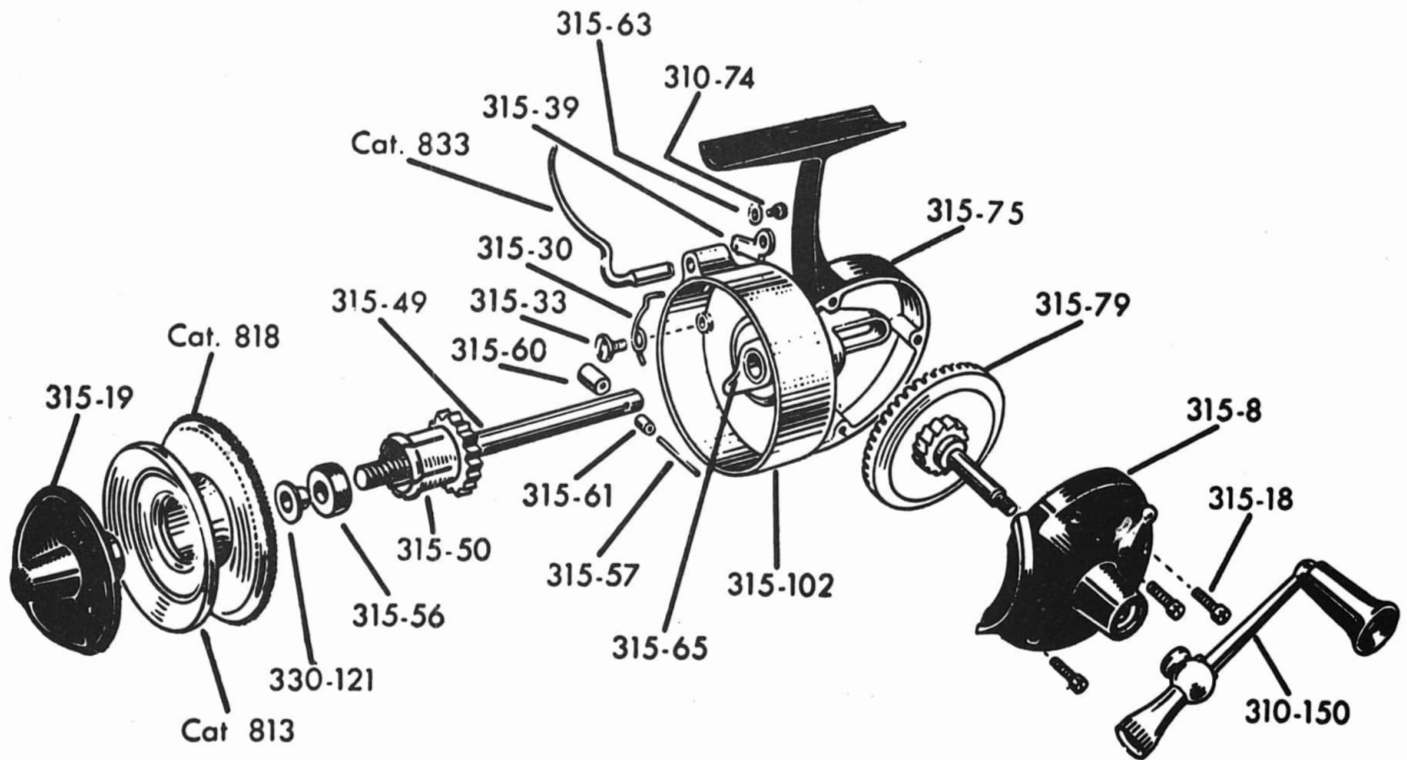
AIREX CORPORATION
DIVISION OF THE LIONEL CORPORATION
28 SAGER PLACE

IRVINGTON 11, NEW JERSEY

PRINTED IN U. S. OF AMERICA

AIREX SPINSTER No. 315 Models 3 & 4

Replacement Parts



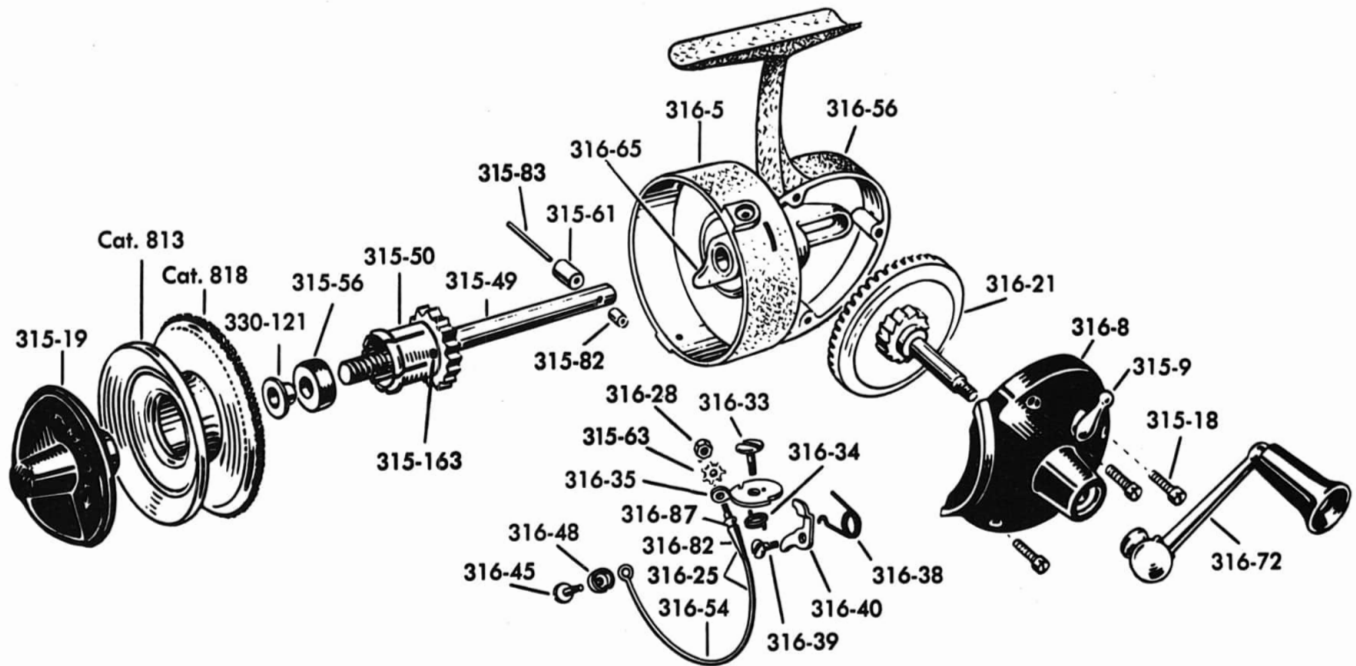
PART NO.	NAME	PRICE	PART NO.	NAME	PRICE
5310-74	FINGER SCREW	\$.10	5315-57	ECCENTRIC PIN	.10
5310-150	HANDLE ASSEMBLY	1.00	5315-60	ECCENTRIC GUIDE	.10
5310-163	BRAKE PIN	.10	5315-61	ECCENTRIC ROLLER	.10
5315-8	COVER & ANTI-REVERSE ASSY.	1.25	5315-63	STAR LOCKWASHER	.10
5315-9	ANTI-REVERSE KNOB		5315-65	ARM & SLEEVE ASSEMBLY	1.00
	(NOT INDICATED)	.25	5315-75	HOUSING	1.85
5315-11	ANTI-REVERSE CAM (NOT SHOWN)	.10	5315-79	MAIN GEAR & SHAFT	.60
5315-13	ANTI-REVERSE SPRING (NOT SHOWN)	.10	5315-102	CUP & PINION ASSEMBLY	1.75
5315-14	ANTI-REVERSE PAWL (NOT SHOWN)	.10	5330-121	EYELET	.10
5315-15	DRIVE SCREW (NOT SHOWN)	.10	CAT. 813	SPOOL	1.50
5315-18	COVER SCREW	.10	CAT. 818	CHENILLE WIRE, 6 PCS.	.25
5315-19	BRAKE WING-NUT	.30	CAT. 833	PICK-UP FINGER	.50
5315-30	FINGER SPRING	.10			
5315-33	FINGER SPRING SCREW	.10			
5315-39	FINGER RETURN	.20			
5315-49	BRAKE SHAFT & CLICK				
	GEAR ASSEMBLY	1.25			
5315-50	CLICK GEAR	.50			
5315-56	BRAKE BUSHING	.10			

NOTE:
 5316-56 HOUSING MAY BE SUBSTITUTED IF
 5315-83 ECCENTRIC PIN AND 5315-82
 ECCENTRIC GUIDE ARE ALSO USED.

AIREX CORPORATION
 DIVISION OF THE LIONEL CORPORATION
 28 SAGER PLACE
 IRVINGTON 11, NEW JERSEY

AIREX SPINSTER MARK V No. 316 Model 5

Replacement Parts

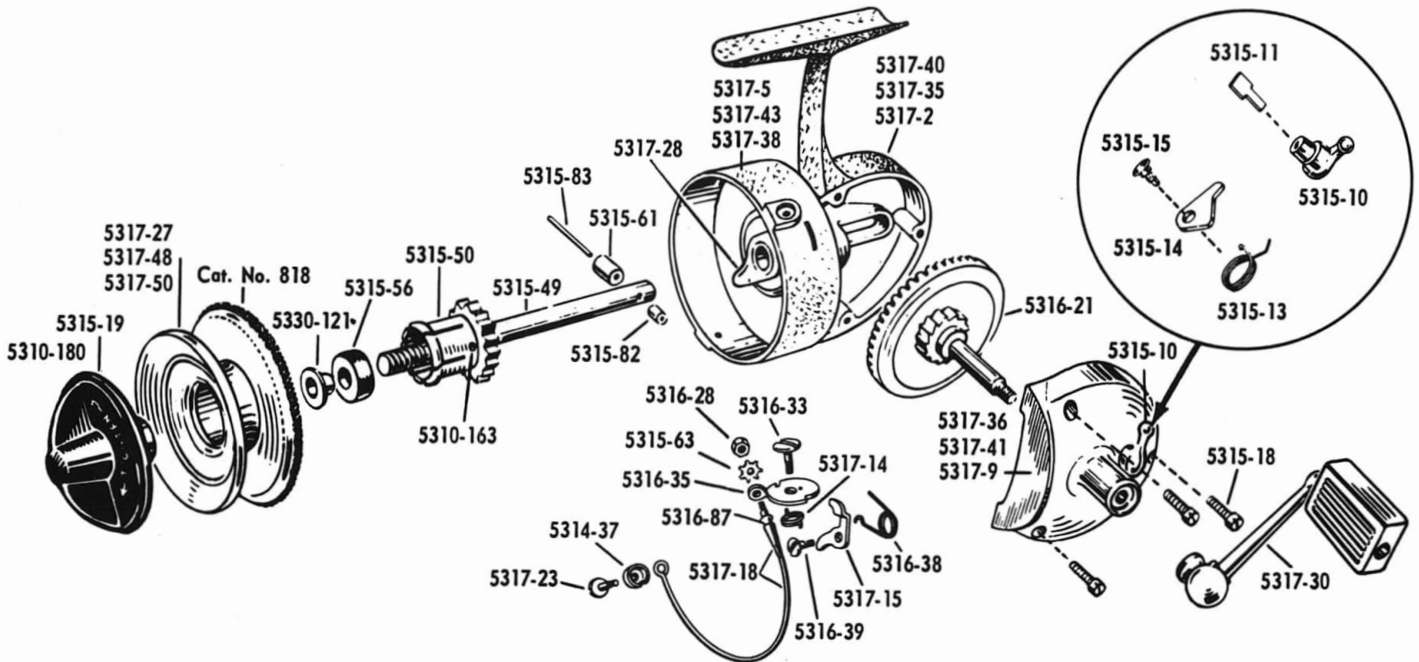


PART NO.	NAME	PRICE	PART NO.	NAME	PRICE
5310-163	BRAKE PIN	\$.10	5316-25	BAIL & ADAPTER ASSEMBLY	1.15
5315-9	ANTI-REVERSE KNOB	.25	5316-28	BAIL NUT	.10
5315-11	ANTI-REVERSE CAM	.10	5316-33	BAIL RETURN CAM SCREW	.15
5315-13	ANTI-REVERSE SPRING	.10	5316-34	BAIL RETURN SPRING	.10
5315-14	ANTI-REVERSE PAWL	.10	5316-35	BAIL RETURN CAM	.25
5315-15	DRIVE SCREW	.10	5316-38	CAM LOCK SPRING	.10
5315-18	COVER SCREW	.10	5316-39	CAM LOCK SCREW	.10
5315-19	BRAKE WING NUT	.30	5316-40	CAM LOCK	.15
5315-49	SHAFT & CLICK GEAR ASSEMBLY	1.25	5316-45	BAIL LOOP CAP SCREW	.10
5315-50	CLICK GEAR	.50	5316-48	BAIL LOOP CAP	.15
5315-56	BRAKE BUSHING	.10	5316-54	BAIL	1.00
5315-61	ECCENTRIC ROLLER	.10	5316-56	HOUSING	1.85
5315-63	STAR LOCKWASHER	.10	5316-65	BAIL RETURN ARM ASSEMBLY	1.00
5315-82	ECCENTRIC GUIDE	.10	5316-72	HANDLE ASSEMBLY	.75
5315-83	ECCENTRIC PIN	.10	5316-82	ADAPTER	.15
5316-5	CUP & PINION GEAR ASSEMBLY	1.75	5316-87	ROLLER	.10
5316-8	COVER & ANTI-REVERSE ASSY.	1.25	5330-121	EYELET	.10
5316-21	MAIN GEAR & SHAFT ASSEMBLY	.60	CAT. 813	SPOOL	1.50
			CAT. 818	CHENILLE WIRE (1/2 DOZ)	.25

AIREX CORPORATION
 DIVISION OF THE LIONEL CORPORATION
 28 SAGER PLACE
 IRVINGTON 11, NEW JERSEY

AIREX SPINSTER MARK VI No. 317

Replacement Parts

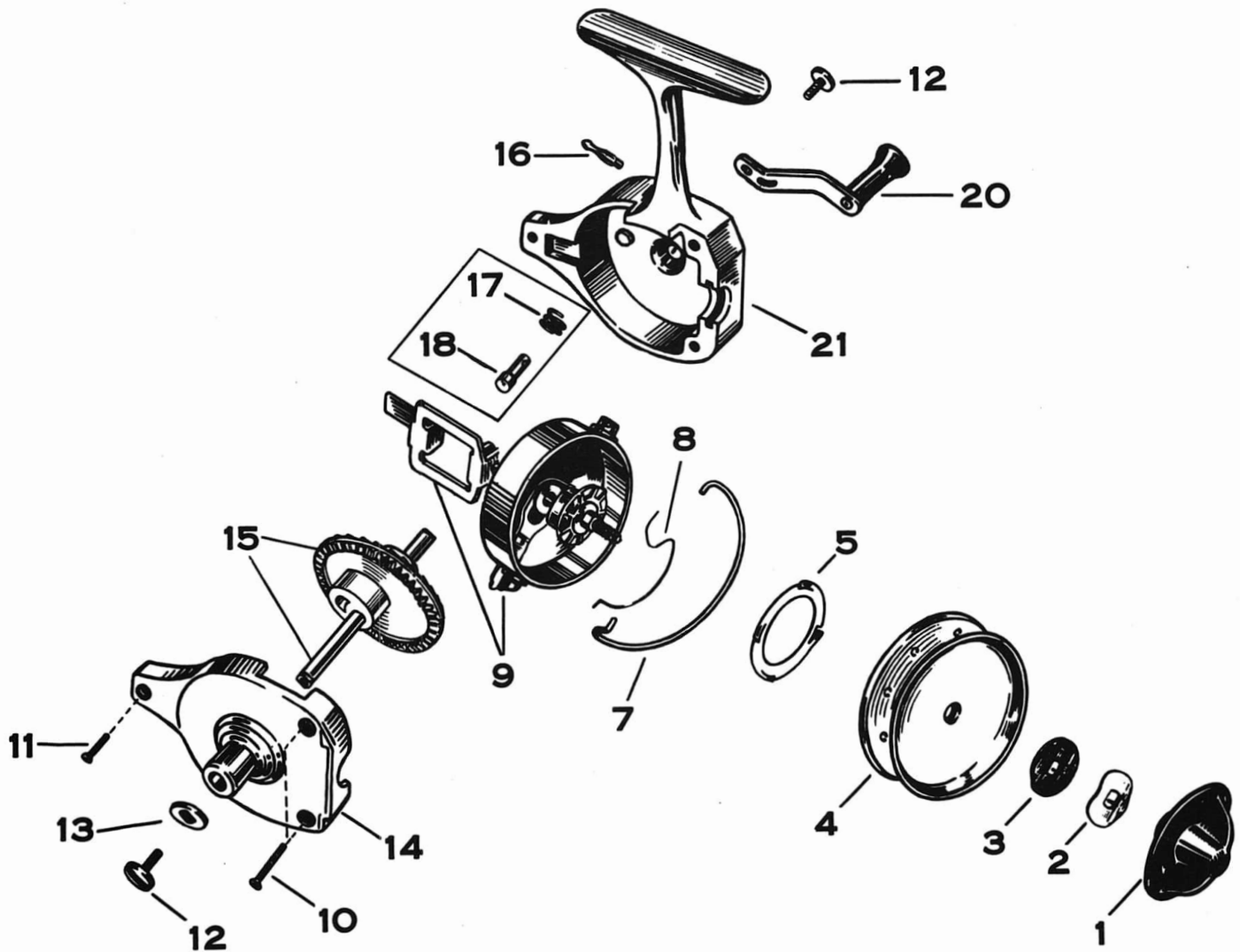


PART NO.	NAME	PRICE	PART NO.	NAME	PRICE
5310-180	BRAKE WING NUT (FOR AQUA AND PINK)	\$.30	5317-2	(BRONZE)	
5310-163	BRAKE PIN	.10	5317-35	(PINK) HOUSING	1.85
5314-37	BAIL LOOP CAP	.10	5317-40	(AQUA)	
5315-10	ANTI-REVERSE KNOB	.25	5317-5	(BRONZE)	
5315-11	ANTI-REVERSE CAM	.10	5317-38	(AQUA) CUP & PINION ASSY.	1.75
5315-13	ANTI-REVERSE SPRING	.10	5317-43	(PINK)	
5315-14	ANTI-REVERSE PAWL	.10	5317-9	(BRONZE)	
5315-15	DRIVE SCREW	.10	5317-36	(PINK) COVER & ANTI-REVERSE	1.25
5315-18	COVER SCREW	.10	5317-41	(AQUA)	
5315-19	BRAKE WING NUT (FOR BRONZE)	.30	5317-14	BAIL RETURN SPRING	.10
5315-49	SHAFT & CLICK GEAR ASSEMBLY	1.25	5317-15	CAM LOCK	.15
5315-50	CLICK GEAR	.50	5317-18	BAIL & LINE GUIDE ASSEMBLY	1.15
5315-56	BRAKE BUSHING	.10	5317-23	BAIL LOOP CAP SCREW	.10
5315-61	ECCENTRIC ROLLER	.10	5317-27	(BRONZE)	
5315-73	LOCKWASHER	.10	5317-48	(PINK) SPOOL	1.50
5315-82	ECCENTRIC GUIDE	.10	5317-50	(AQUA)	
5315-83	ECCENTRIC PIN	.10	5317-28	BAIL RETURN ARM ASSEMBLY	1.00
5316-21	MAIN GEAR & SHAFT ASSEMBLY	.60	5317-30	HANDLE ASSEMBLY	.75
5316-28	RETAINING NUT	.10	5330-121	EYELET	.10
5316-33	BAIL RETURN CAM SCREW	.15	CAT. 818	CHENILLE WIRE (1/2 DOZEN)	.25
5316-35	BAIL RETURN CAM	.25			
5316-38	CAM LOCK SPRING	.10			
5316-39	CAM LOCK SCREW	.10			
5316-87	ROLLER	.10			

AIREX CORPORATION
 DIVISION OF THE LIONEL CORPORATION
 28 SAGER PLACE
 IRVINGTON 11, NEW JERSEY

APACHE No. 319 Model 3

Replacement Parts



REF. NO.	PART NO.	PART NAME	PRICE	REF. NO.	PART NO.	PART NAME	PRICE
1	5319-25	Drag Nut	.30	14	5319-34	Cover, Black	1.00
2	5318-18	Spring Washer	.10		5319-41	Cover, Pink	
3	5318-17	Drag Washer	.10		5319-42	Cover, Aqua	
4	Cat. # 803	Spool Assembly, Gold	1.25	15	5319-29	Main Gear and Shaft	.75
5	5322-26	Click Spring	.20	16	5319-39	Anti-Reverse Lever	.15
7	5318-61	Bail	.85	17	5319-24	Anti-Reverse Spring	.10
8	5319-22	Bail Release Spring	.10	18	5319-28	Anti-Reverse Pawl	.25
9	5319-20	Cup Complete, Gold	3.25	20	5318-46	Winding Arm Assembly	.50
	5319-51	Cup Complete, Pink		21	5319-30	Housing & Anti-Reverse, Black	2.00
	5319-52	Cup Complete, Aqua			5319-43	Housing & Anti-Reverse, Pink	
10	5318-45	Cover Screw (long)	.10	5319-48	Housing & Anti-Reverse, Aqua		
11	5318-32	Cover Screw (short)	.10				
12	5318-27	Winding Arm Screw	.10				
13	5318-26	Main Gear Shaft Spacer	.10				

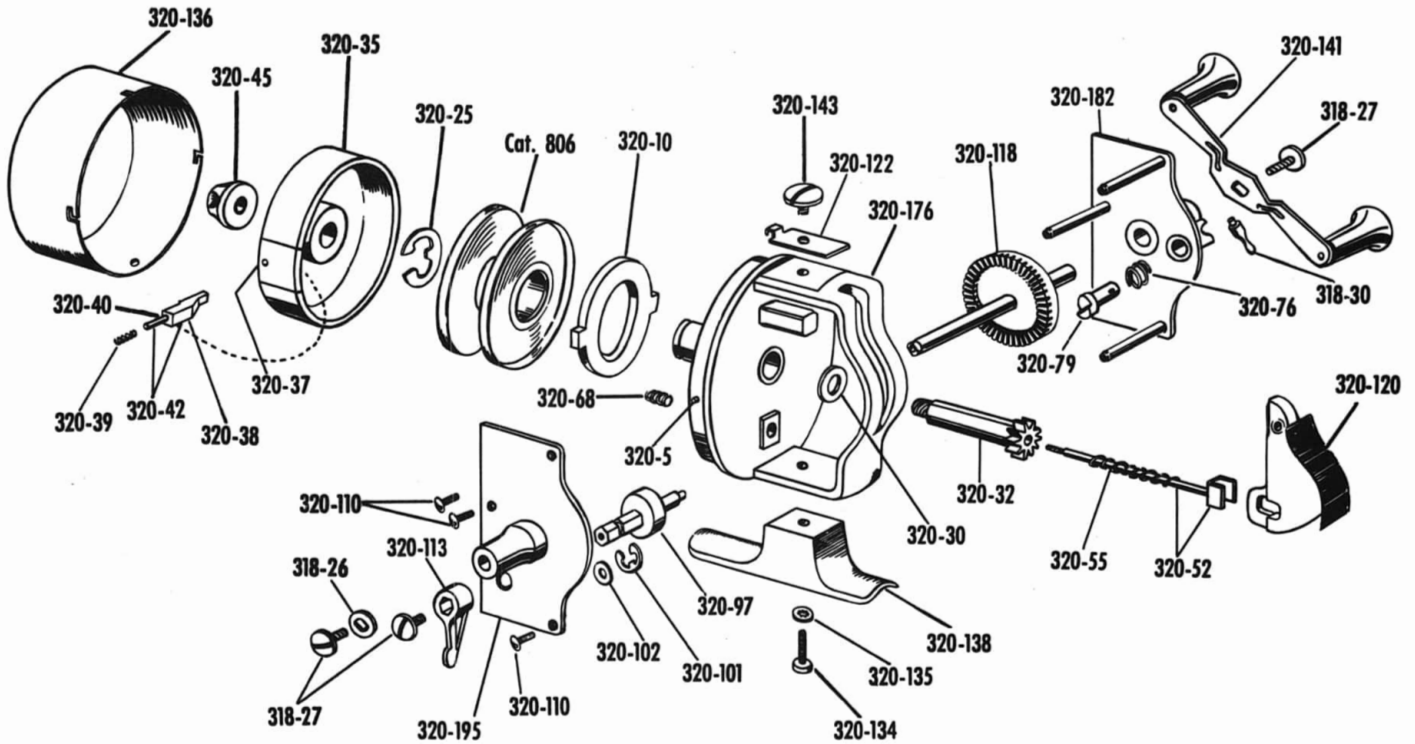
AIREX CORPORATION

DIVISION OF THE LIONEL CORPORATION

28 Sager Place, Irvington 11, N.J.

AIREX MASTERKAST No. 320

Replacement Parts

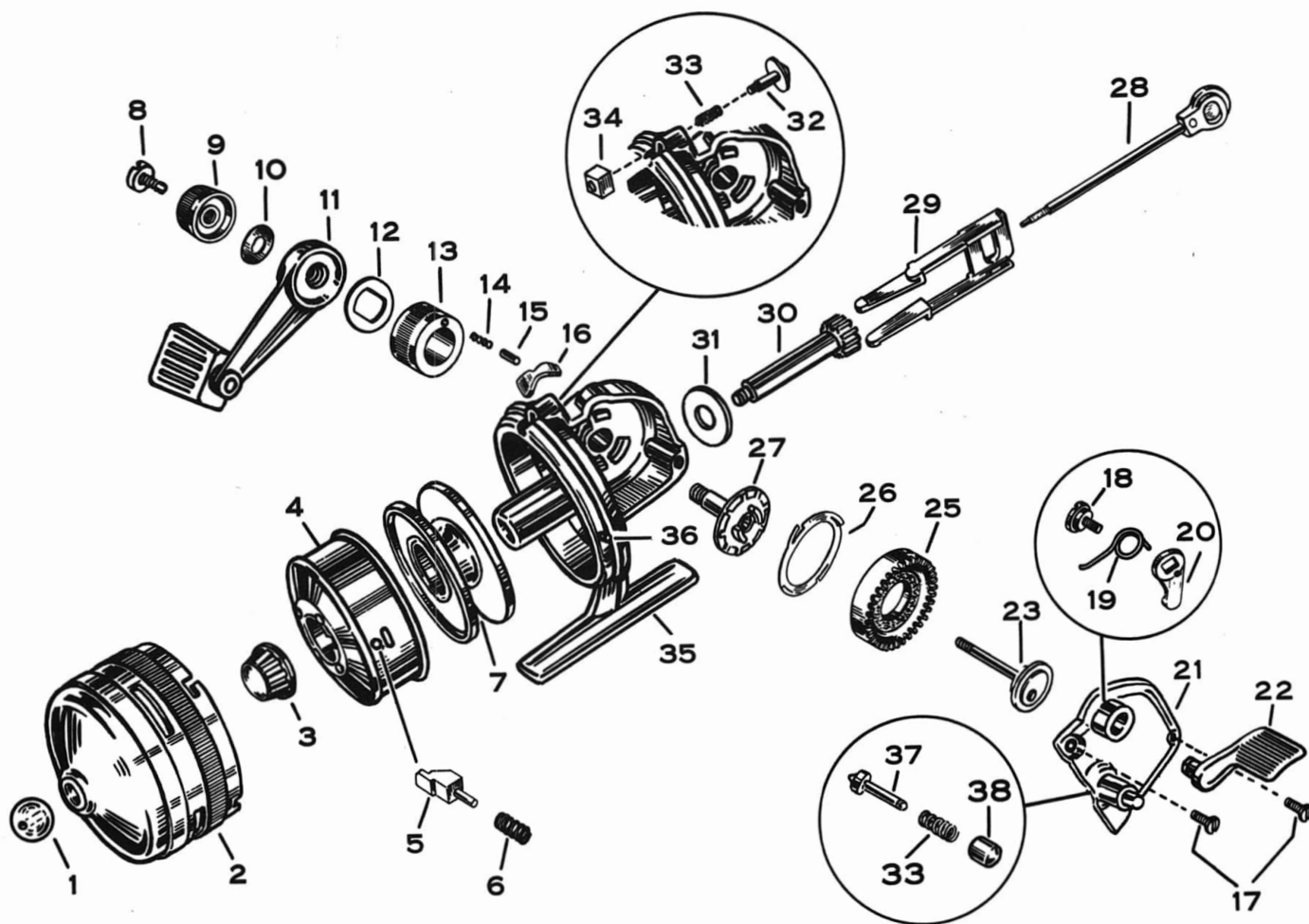


PART NO.	NAME	PRICE	PART NO.	NAME	PRICE
5318-26	SPACER	\$.10	5320-79	ANTI-REVERSE PAWL	.35
5318-27	WINDING ARM SCREW	.10	5320-89	HANDLE ASSEMBLY (SINGLE GRIP)	.75
5318-30	ANTI-REVERSE LEVER	.15	5320-97	BRAKE CAM & SHAFT ASSEMBLY	.85
5320-5	BAYONET SLOT LOCK PIN	.10	5320-101	QUADRANT LEVER RETAINING RING	.10
5320-10	BRAKE DISC	.30	5320-102	SPRING WASHER	.15
5320-25	SPOOL RETAINING RING	.10	5320-110	COVER SCREW	.10
5320-30	PINION THRUST WASHER	.10	5320-113	QUADRANT LEVER	.30
5320-32	PINION	.50	5320-118	MAIN GEAR & SHAFT ASSEMBLY	1.25
5320-35	PICK-UP CONE ASSEMBLY	1.75	5320-120	CASTING LEVER	.50
5320-37	PICK-UP CONE PLATE	.65	5320-122	GATHERING FACE LOCK PLATE	.15
5320-38	PICK-UP BODY	.20	5320-134	FOOT ATTACHING SCREW	.10
5320-39	PICK-UP BODY SPRING	.10	5320-135	FOOT LOCKWASHER	.10
5320-40	PICK-UP PIN	.40	5320-136	GATHERING FACE ASSEMBLY	1.25
5320-42	PICK-UP BODY ASSEMBLY	.70	5320-138	FOOT	.50
5320-44	CONE PLATE EYELET (NOT SHOWN)	.10	5320-141	HANDLE ASSEMBLY (DOUBLE GRIP)	1.00
5320-45	PICK-UP BODY CAM ASSEMBLY	.40	5320-143	LOCK PLATE SCREW	.10
5320-52	PICK-UP BODY CAMSHAFT ASSY.	.40	5320-176	HOUSING	2.00
5320-55	PICK-UP BODY CAM SPRING	.15	5320-182	GEAR COVER & ANTI-REVERSE ASSEMBLY	1.75
5320-68	CAM BRAKE SPRING	.10	5320-195	PLAIN COVER & BUSHING ASSY.	1.75
5320-76	ANTI-REVERSE SPRING	.10	CAT. 806	SPOOL	1.50

AIREX CORPORATION
 DIVISION OF THE LIONEL CORPORATION
 28 SAGER PLACE
 IRVINGTON 11, NEW JERSEY

AIREX ELDORADO No. 322

Replacement Parts

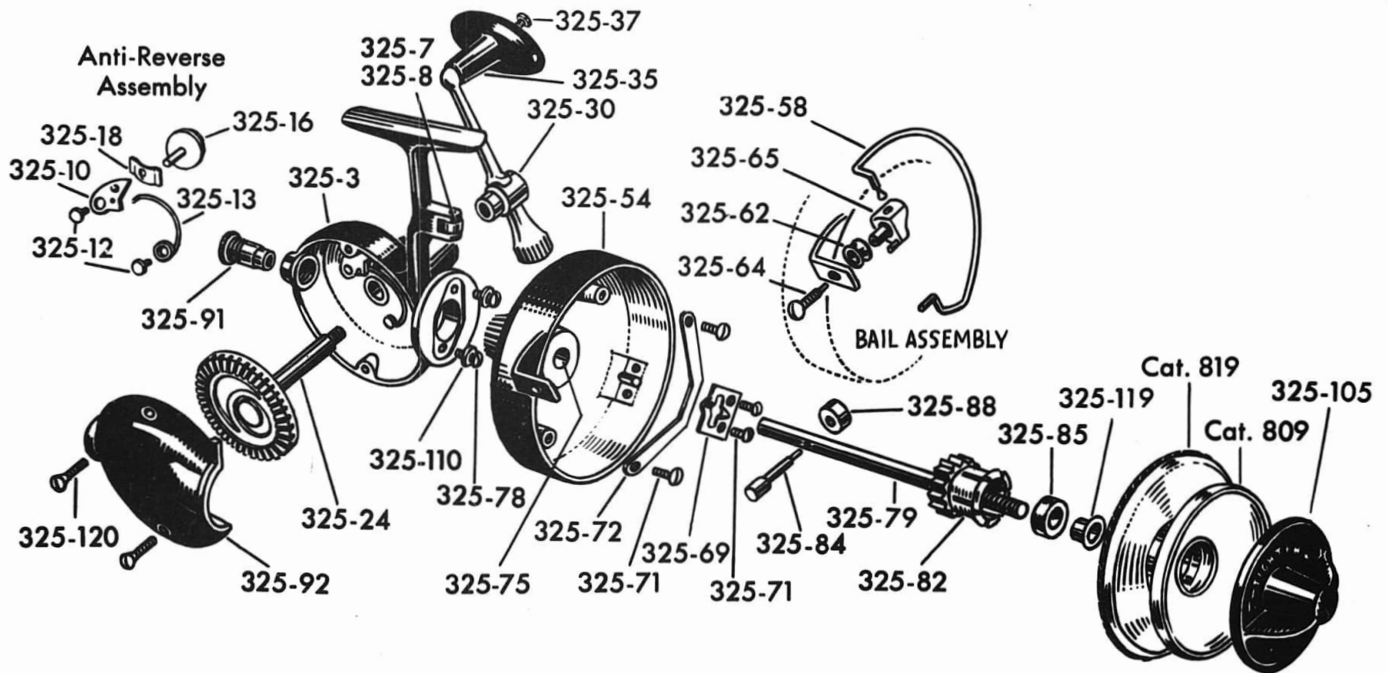


REF. #	PART #	PART NAME	PRICE	REF. #	PART #	PART NAME	PRICE
1	5320-13	LINE BEAD	.10	19	5322-58	CONTROL LEVER SPRING	.10
2	5322-90	GATHERING FACE ASSEM.	1.50	20	5322-57	CONTROL LEVER ARM	.20
3	5322-129	PICKUP CAM ASSEM.	.60	21	5322-50	COVER ASSEMBLY	1.50
4	5322-117	PICKUP CONE ASSEM.	2.00	22	5322-55	CONTROL LEVER	.60
5	5322-112	PICKUP BODY ASSEM.	.70	23	5322-140	CRANK PLATE & SHAFT	1.50
6	5320-39	PICKUP BODY SPRING	.10	25	5322-133	MAIN GEAR	1.00
7	CAT. #804	SPOOL	1.50	26	5322-26	CLICK SPRING	.20
8	5322-30	DRAG NUT SCREW	.10	27	5322-37	DRAG PLATE ASSEM.	1.35
9	5322-28	DRAG NUT	.35	28	5322-39	CAM SHAFT ASSEM.	.50
0	5322-24	SPRING WASHER	.10	29	5322-120	YOKE	.50
1	5322-14	WINDING ARM ASSEM.	1.25	30	5322-122	PINION SHAFT	.75
2	5322-20	BEARING WASHER	.10	31	5322-32	PINION THRUST WASHER	.10
3	5322-10	ANTI-REVERSE SLEEVE	.40	32	5322-61	CATCH SCREW	.10
4	5322-11	ANTI-REVERSE SPRING	.10	33	5322-62	CATCH SPRING	.10
5	5322-13	ANTI-REVERSE PIN	.10	34	5322-60	CATCH NUT	.10
6	5322-12	ANTI-REVERSE PAWL	.10	35	5322-5	HOUSING & PIN ASSEM.	2.75
7	5322-115	COVER SCREW	.10	36	5320-6	BAYONET LOCK PIN	.10
8	5322-59	CONTROL LEVER SCREW	.15	37	5322-81	LOCK PIN	.10
				38	5322-83	LOCK BUTTON	.20

AIREX CORPORATION
 DIVISION OF THE LIONEL CORPORATION
 28 SAGER PLACE
 IRVINGTON 11, NEW JERSEY

AIREX BEACHCOMBER No. 325

Replacement Parts

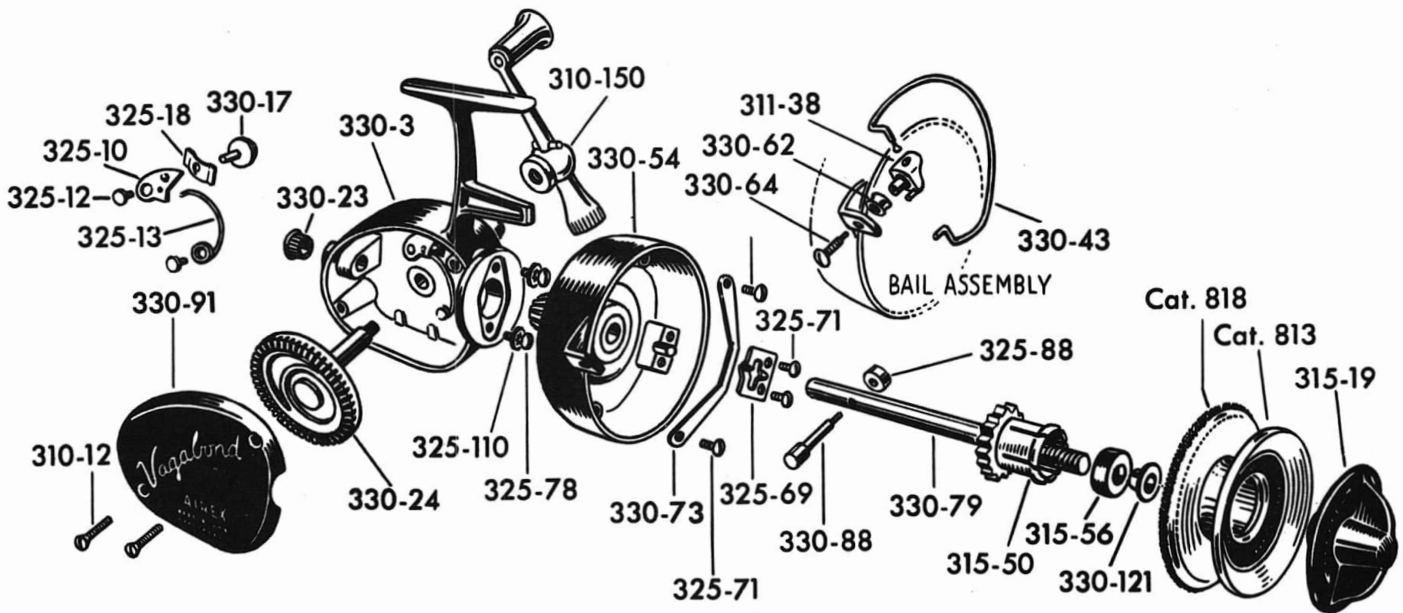


PART NO.	NAME	PRICE	PART NO.	NAME	PRICE
325-3	HOUSING & ANTI-REVERSE ASSY.	\$4.75	325-75	DUST CAP	.15
325-7	BAIL TRIP ROLLER	.35	325-77	DUST CAP WASHER	.10
325-8	BAIL TRIP ROLLER PIN	.10	325-78	CUP BUSHING SCREW	.10
325-24	MAIN GEAR & SHAFT	2.50	325-79	MAIN SHAFT & CLICK GEAR ASSEMBLY	2.25
325-30	HANDLE ASSEMBLY	2.25	325-84	ECCENTRIC PIN	.35
325-35	GRIP	.35	325-85	BRAKE BUSHING	.15
325-37	GRIP SCREW	.25	325-87	COVER	1.60
325-54	CUP & PINION ASSEMBLY	3.50	325-88	ECCENTRIC PIN ROLLER	.20
325-58	BAIL	2.60	325-91	MAIN SHAFT GUIDE	.35
325-62	BAIL ROLLER	.40	325-105	BRAKE NUT	.60
325-64	BAIL ROLLER SCREW	.30	325-110	LOCKWASHER	.10
325-65	BAIL ROLLER CAP	.90	325-120	COVER SCREW	.10
325-69	BAIL RETAINER	.30	325-121	BRAKE BUSHING EYELET	.10
325-71	BAIL SPRING & BAIL RETAINER SCREW	.10	CAT. 809	SPOOL	2.50
325-73	BAIL SPRING	.75	CAT. 819	CHENILLE WIRE, 1/2 DZ.	.40

AIREX CORPORATION
 DIVISION OF THE LIONEL CORPORATION
 28 SAGER PLACE
 IRVINGTON 11, NEW JERSEY

AIREX VAGABOND No. 330

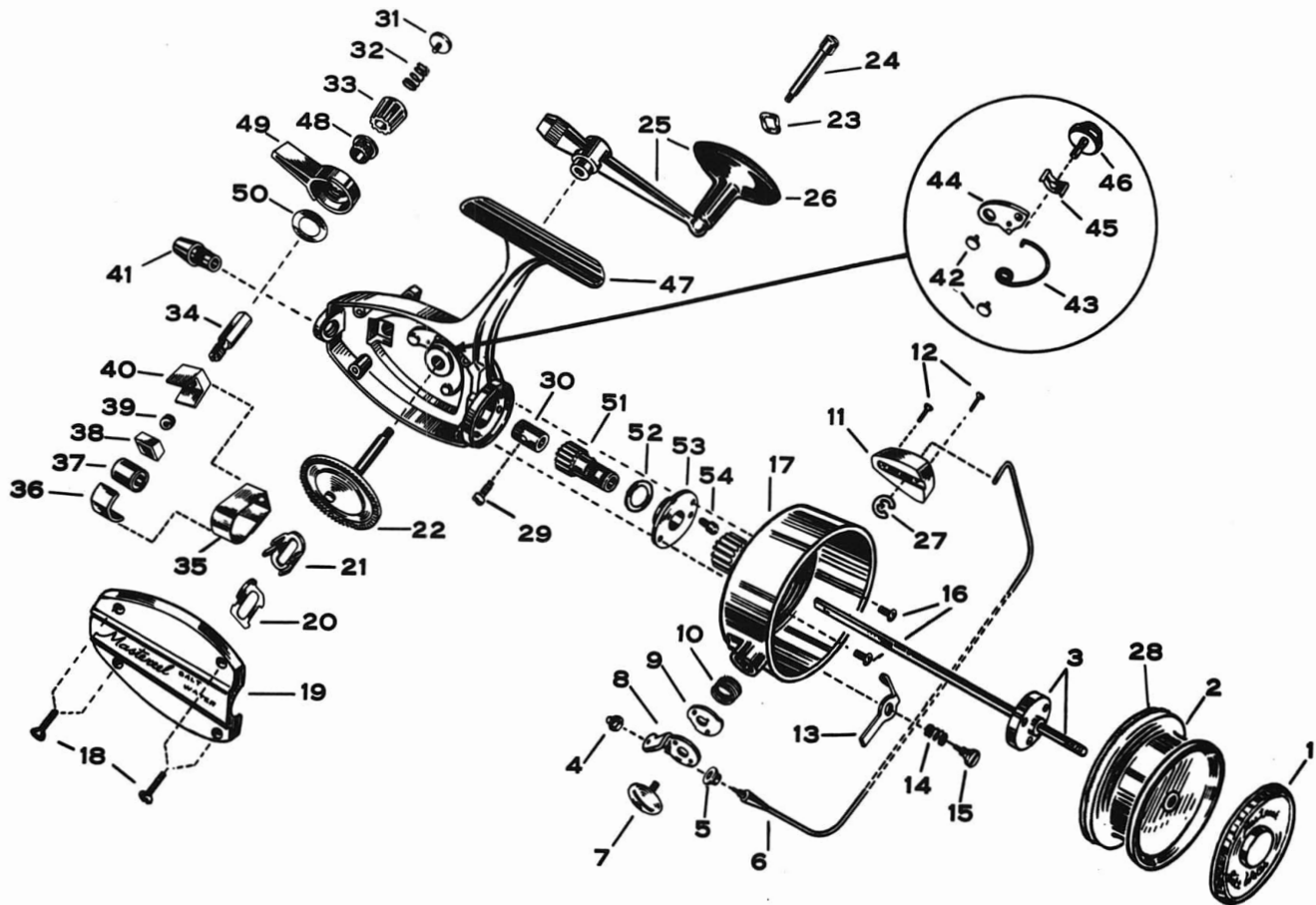
Replacement Parts



PART NO.	NAME	PRICE	PART NO.	NAME	PRICE
5310-12	COVER SCREW	\$.10	5330-24	MAIN GEAR & SHAFT	.90
5310-150	HANDLE ASSEMBLY	1.00	5330-43	BAIL	1.50
5311-38	BAIL ROLLER CAP	.35	5330-54	CUP & PINION ASSEMBLY	1.90
5315-19	SPOOL NUT	.30	5330-62	BAIL ROLLER	.15
5315-56	BRAKE BUSHING	.10	5330-64	BAIL ROLLER SCREW	.15
5325-69	BAIL RETAINER	.20	5330-73	BAIL SPRING	.40
5325-71	BAIL RETAINER SCREW	.10	5330-79	SPOOL SHAFT & CLICK GEAR ASSEMBLY	1.60
5325-78	CUP BUSHING RETAINER SCREW	.10	5330-88	ECCENTRIC PIN	.20
5325-88	ECCENTRIC PIN ROLLER	.15	5330-91	COVER	1.00
5325-110	LOCKWASHER	.10	CAT. 813	SPOOL	1.50
5330-3	HOUSING & ANTI-REVERSE ASSY.	2.50	CAT. 818	CHENILLE WIRE (1/2 DOZ.)	.25
5330-23	HOUSING CAP	.20			

AIREX CORPORATION
 DIVISION OF THE LIONEL CORPORATION
 28 SAGER PLACE
 IRVINGTON 11, NEW JERSEY

MASTEREEL No. 350 Replacement Parts



REF. NO.	PART NO.	PART NAME	PRICE	REF. NO.	PART NO.	PART NAME	PRICE
1	5350-79	Spool Knob	.75	28	Cat. #818	Chenille Wire	6 for .25
2	Cat. #805	Spool	2.50	29	5350-31	Yoke Collar Screw	.15
3	5350-23	Main Shaft Assembly	2.50	30	5350-30	Yoke Collar	.35
4	5350-70	Bail Nut	.15	31	5350-84	Drag Screw	.20
5	5350-63	Roller	.30	32	5350-83	Drag Knob Spring	.10
6	5350-59	Bail Assembly	2.75	33	5350-42	Drag Knob	.45
7	5350-69	Bail Screw	.25	34	5350-39	Drag Shaft	.40
8	5350-65	Bail Bracket	.40	35	5312-105	Brake Band Retainer	.30
9	5350-66	Cam Lock	.30	36	5312-180	Brake	.25
10	5350-67	Bail Return Spring	.20	37	5350-46	Drag Drum	.55
11	5350-72	Counterweight	.40	38	5312-195	Brake Shoe Assembly	.25
12	5310-12	Counterweight Screw	.10	39	5312-114	Brake Shoe Spring	.15
13	5350-73	Lock Lever	.30	40	5312-183	Brake Band	.25
14	5350-44	Lock Lever Spring	.10	41	5350-12	Rear Bearing	.40
15	5350-75	Lock Lever Screw	.20	42	5325-14	Drive Stud	.10
16	5350-74	Cup Bearing Screw	.10	43	5325-13	Pawl Spring	.15
17	5350-17	Cup & Pinion Assembly	4.25	44	5312-173	Pawl	.15
18	5318-31	Cover Screw	.10	45	5312-137	Button Spring	.10
19	5350-88	Cover	1.85	46	5350-6	Anti-Reverse Button	.25
20	5350-14	Click Spring	.35	47	5350-2	Housing Assembly	6.25
21	5350-28	Yoke	.40	48	5350-11	Drag Lever Bushing	.20
22	5350-40	Main Gear & Shaft	2.75	49	5350-9	Drag Lever	.65
23	5312-209	Lock Washer	.10	50	5350-37	Drag Lever Washer	.10
24	5325-38	Handle Screw	.30	51	5350-21	Pinion	.75
25	5350-49	Winding Handle Assembly	2.50	52	5350-8	Pinion Washer	.10
26	5325-35	Handle Grip	.30	53	5350-87	Cup Bearing	.40
27	5314-74	Bail Retaining Ring	.10	54	5350-45	Bail Release Stud	.15

AIREX CORPORATION

DIVISION OF THE LIONEL CORPORATION

28 Sager Place, Irvington 11, N.J.