

REEL REPLACEMENT PARTS

FOR

BRONSON REELS

CATALOG NO. 59

HOW TO GET REELS REPAIRED

On a separate sheet herewith, you will find a complete list of Bronson Authorized Repair Service Centers. Normally, for faster service, you should forward any reels for repair to the Repair Service Center nearest you. If you prefer, you may send such reels directly to the factory for repair. If there is any question as to warranty, always send such reels directly to the factory.

HOW TO ORDER REPLACEMENT PARTS

To determine the name and number of reel parts required, refer to take-down illustrations herein. Always give the following information when ordering parts.

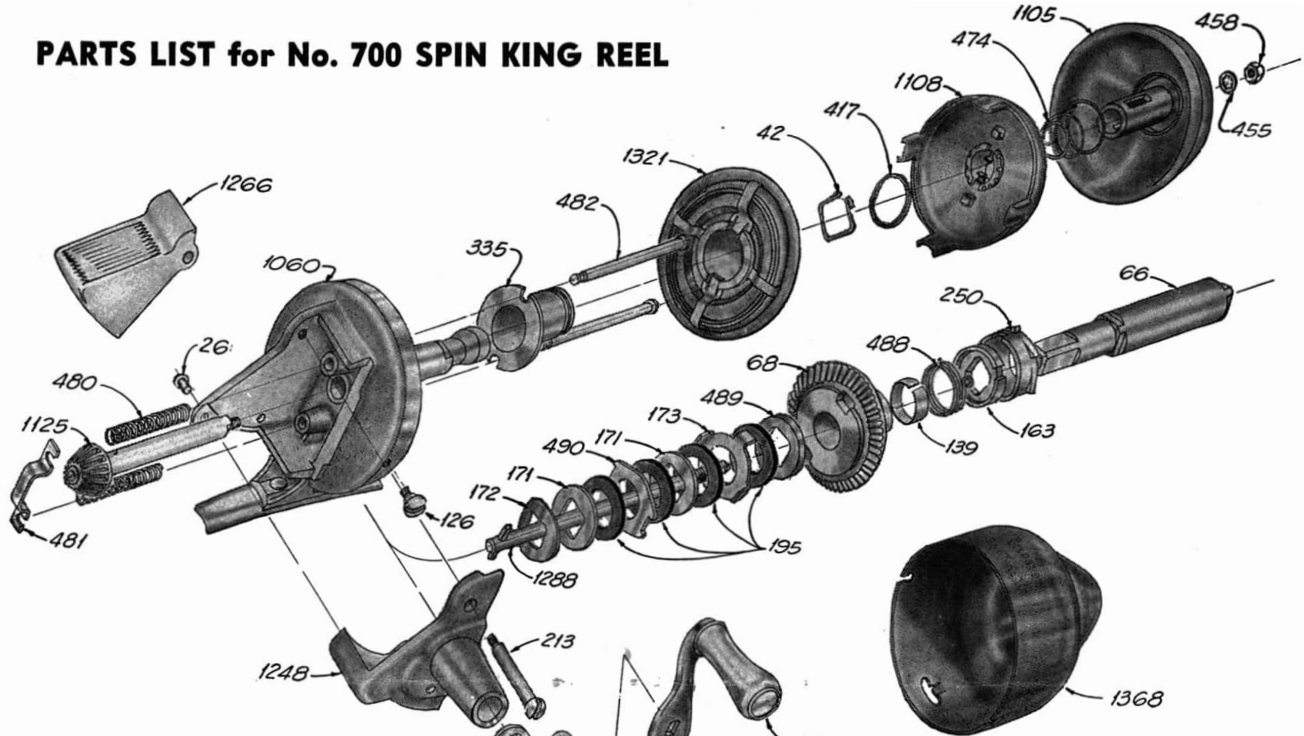
- | | |
|----------------|----------------|
| 1. Part number | 3. Reel number |
| 2. Part name | 4. Reel name |

Orders for reel parts may be sent to your nearest Authorized Repair Service Center or directly to the factory as you prefer. The prices on any and all parts are subject to change without notice.

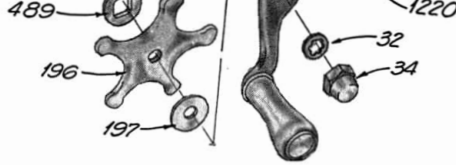
BRONSON REEL COMPANY

DIV. HIGBIE MANUFACTURING CO.
BRONSON, MICHIGAN

PARTS LIST for No. 700 SPIN KING REEL



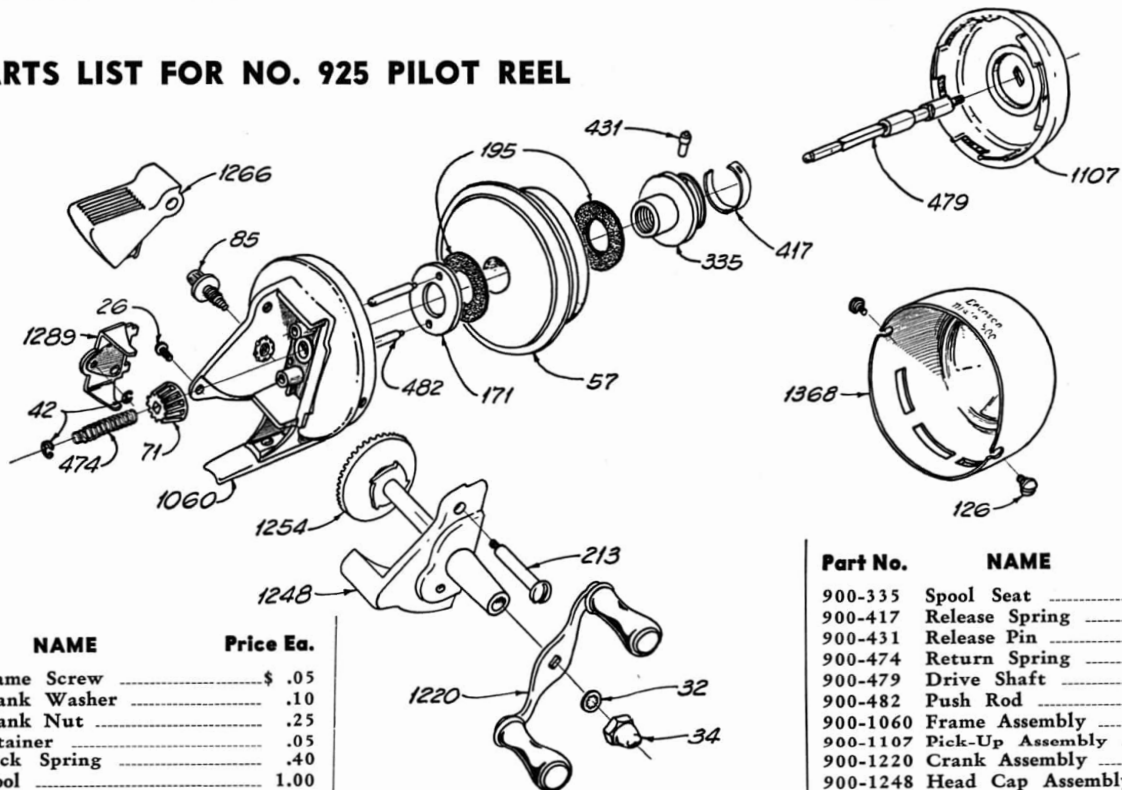
Part No.	NAME	Price Ea.
700-26	Frame Screw	\$.05
700-32	Crank Washer	.10
700-34	Crank Nut	.25
700-42	Retainer Ring	.15
700-66	Gear Staff	1.20
700-68	Drive Gear	1.75
700-126	Cover Lock Screw	.05
700-139	Clutch Band	.20
700-163	Ratchet Washer	.40
700-171	Drag Washer	.10
700-172	Spring Washer	.10
700-173	Keyed Washer	.10
700-195	Friction Washer	.10
700-196	Star Wheel	.50
700-197	Star Wheel Washer	.20



Part No.	NAME	Price Ea.
700-213	Lever Shaft	.15
700-250	Gear Staff Ratchet	.30
700-335	Spool Seat	.40
700-417	Release Spring	.15
700-458	Drive Shaft Nut	.15
700-474	Pick-Up Return Spring	.15
700-480	Push Rod Spring	.15

Part No.	NAME	Price Ea.
700-481	Push Rod Bar	.15
700-482	Push Rod	.15
700-488	Ratchet Spring	.15
700-489	Washer	.15
700-490	Top Keyed Washer	.10
700-1060	Frame Assembly	5.50
700-1105	Brake Drum Assembly	1.50
700-1108	Pick-Up Assembly	1.75
700-1125	Pinion & Shaft Assembly	1.00
700-1220	Crank Assembly	1.00
700-1248	Head Cap Assembly	2.50
700-1266	Brake Lever Assembly	.50
700-1288	Drag Shaft Assembly	.40
700-1321	Spool Assembly	1.25
700-1368	Cover Assembly	2.00

PARTS LIST FOR NO. 925 PILOT REEL

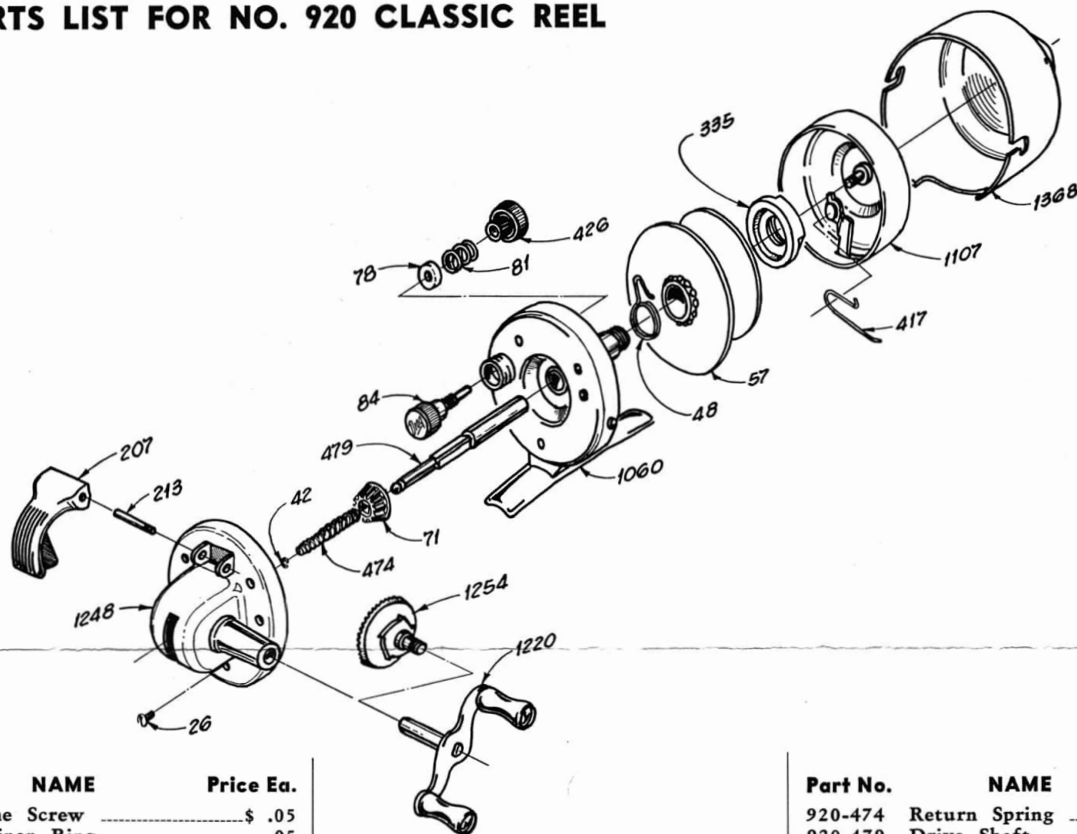


Part No.	NAME	Price Ea.
700-26	Frame Screw	\$.05
700-32	Crank Washer	.10
700-34	Crank Nut	.25
800-42	Retainer	.05
900-48	Click Spring	.40
900-57	Spool	1.00
900-71	Pinion	.40
900-85	Drag Adjusting Screw	.50
700-126	Cover Lock Screw	.05
900-171	Drag Washer	.15

Part No.	NAME	Price Ea.
900-195	Friction Washer	.08
700-213	Lever Shaft	.15

Part No.	NAME	Price Ea.
900-335	Spool Seat	.70
900-417	Release Spring	.15
900-431	Release Pin	.15
900-474	Return Spring	.08
900-479	Drive Shaft	1.00
900-482	Push Rod	.15
900-1060	Frame Assembly	5.00
900-1107	Pick-Up Assembly	2.50
900-1220	Crank Assembly	1.00
900-1248	Head Cap Assembly	2.50
900-1254	Drive Gear Assembly	1.25
900-1266	Brake Lever Assembly	.70
900-1289	Drag Lever Assembly	1.00
900-1368	Cover Assembly	2.00

PARTS LIST FOR NO. 920 CLASSIC REEL

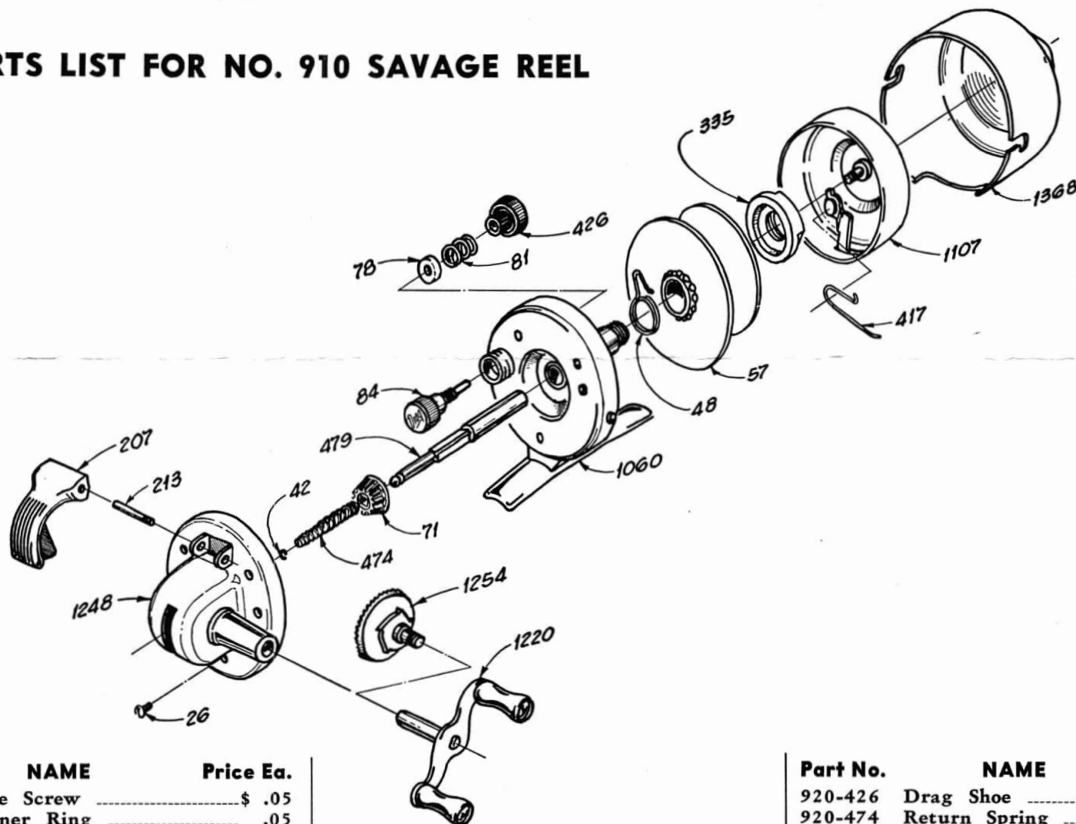


Part No.	NAME	Price Ea.
920-26	Frame Screw	\$.05
920-42	Retainer Ring	.05
920-48	Click Spring	.15
920-57	Spool	1.00
920-71	Pinion	.40
920-78	Drag Spring Washer	.05
920-81	Drag Spring	.05
920-84	Drag Screw	.40

Part No.	NAME	Price Ea.
920-207	Brake Lever	.40
920-213	Lever Shaft	.08
920-335	Spool Seat	.30
920-417	Release Spring	.05
920-426	Drag Shoe	.08

Part No.	NAME	Price Ea.
920-474	Return Spring	.05
920-479	Drive Shaft	1.25
920-1060	Frame Assembly	3.75
920-1107	Pick-Up Assembly	2.50
920-1220	Crank Assembly	1.00
920-1248	Head Cap Assembly	2.00
920-1254	Drive Gear Assembly	2.00
920-1368	Cover Assembly	2.00

PARTS LIST FOR NO. 910 SAVAGE REEL

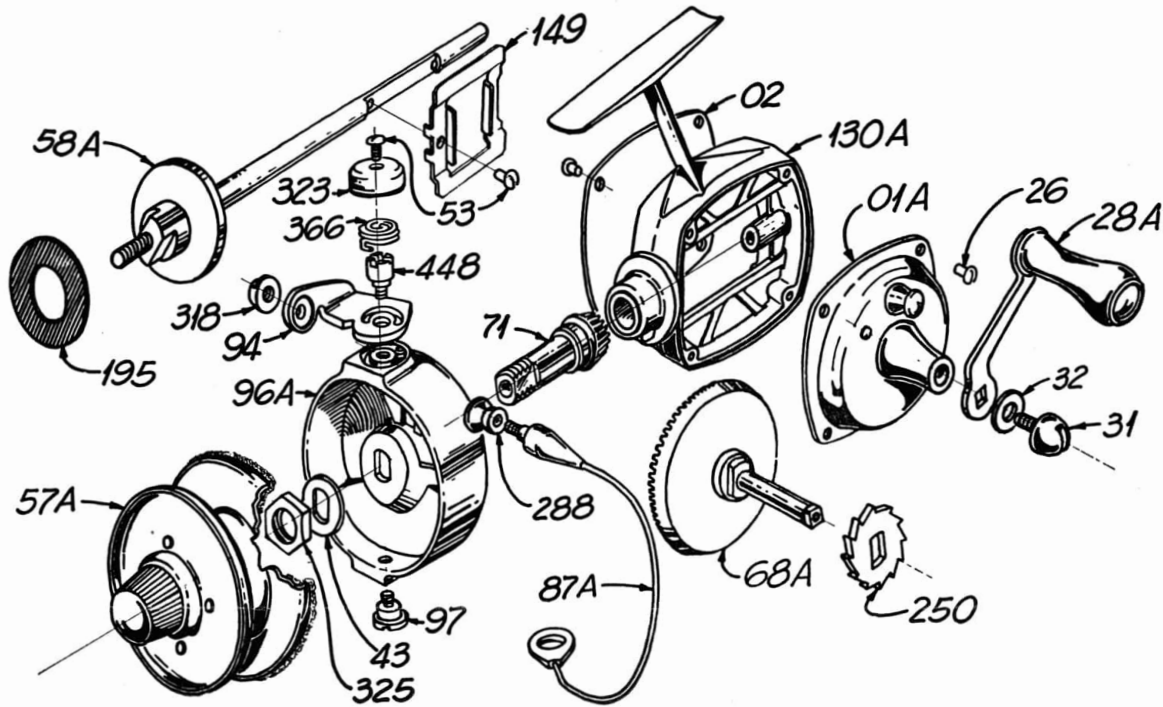


Part No.	NAME	Price Ea.
920-26	Frame Screw	\$.05
920-42	Retainer Ring	.05
920-48	Click Spring	.15
920-57	Spool	1.00
920-71	Pinion	.40
920-78	Drag Spring Washer	.05
920-81	Drag Spring	.05
920-84	Drag Screw	.40
910-207	Brake Lever	.40

Part No.	NAME	Price Ea.
920-213	Lever Shaft	.08
920-335	Spool Seat	.30
920-417	Release Spring	.05

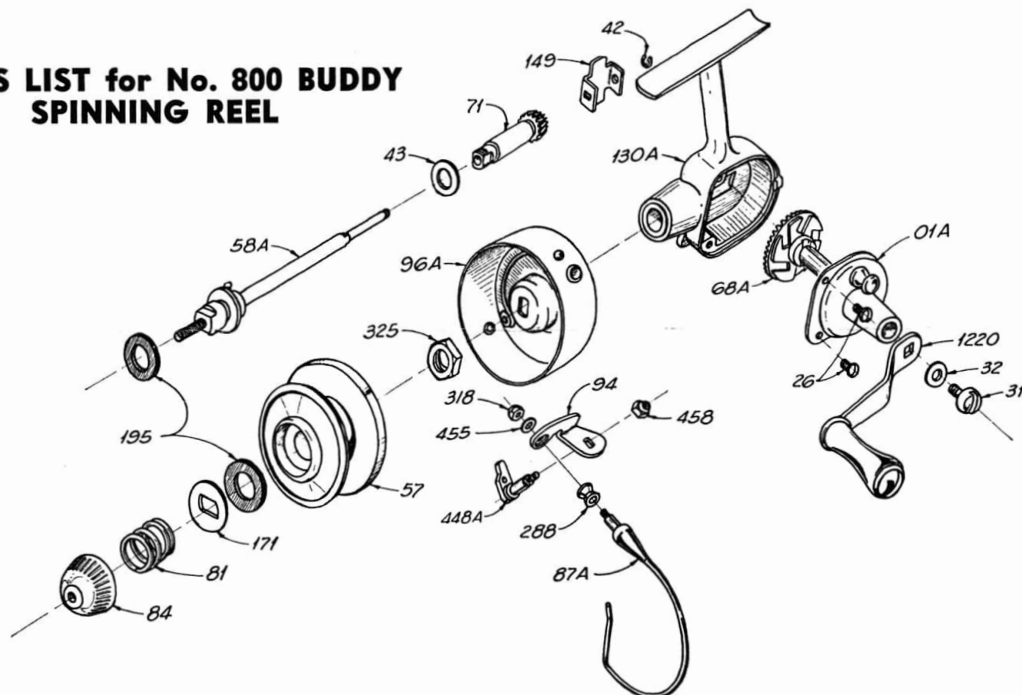
Part No.	NAME	Price Ea.
920-426	Drag Shoe	.08
920-474	Return Spring	.05
920-479	Drive Shaft	1.25
920-1060	Frame Assembly	3.75
920-1107	Pick-Up Assembly	2.50
910-1220	Crank Assembly	1.00
910-1248	Head Cap Assembly	2.00
920-1254	Drive Gear Assembly	2.00
910-1368	Cover Assembly	2.00

PARTS LIST for No. 500 "JET" SPINNING REEL



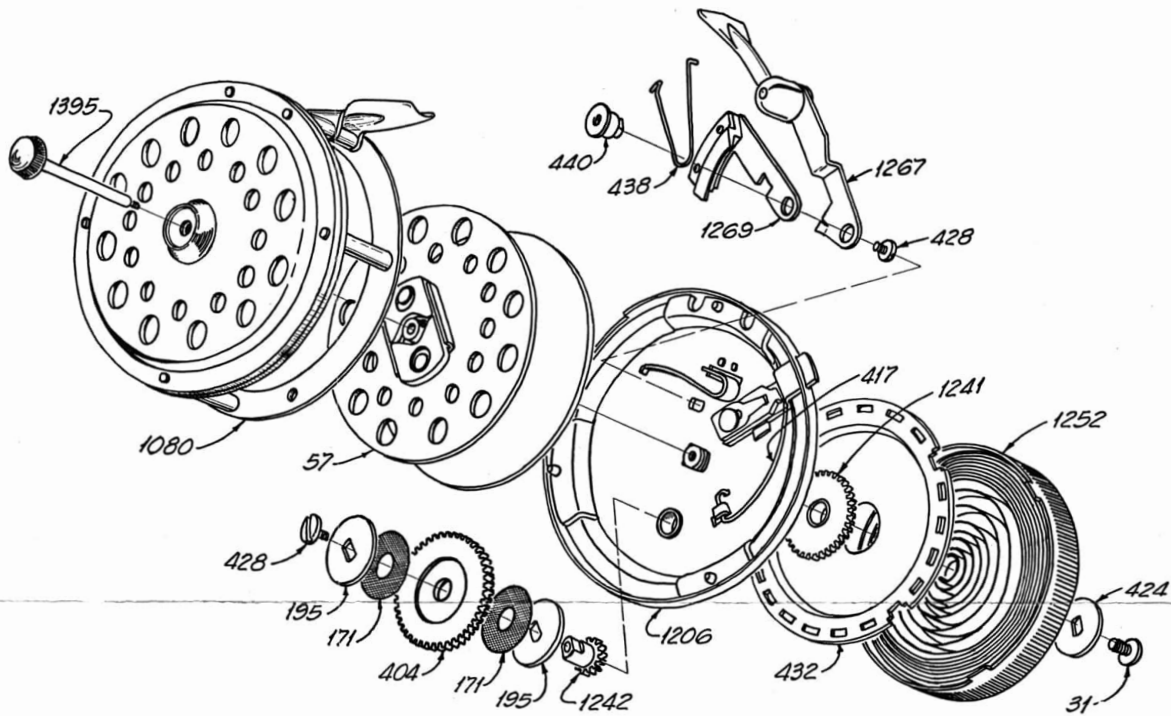
Part No.	NAME	Price Ea.	Part No.	NAME	Price Ea.	Part No.	NAME	Price Ea.
500-01A	Head Cap Assembly	\$1.25	500-58A	Spool Shaft Assembly	1.00	500-250	Ratchet	.30
500-02	Tail Plate	.40	500-68A	Drive Gear Assembly	1.60	500-288	Roller	.15
500-26	Frame Screw	.05	500-71	Pinion	1.10	500-318	Bail Wire Nut & Washer	.30
500-28A	Crank Assembly	.80	500-87A	Bail Wire Assembly	1.25	500-323	Spring Cover	.15
500-31	Crank Screw	.20	500-94	Bail Wire Bracket	.35	500-325	Spool Housing Nut	.15
500-32	Crank Washer	.10	500-96A	Spool Housing Assembly	3.00	500-366	Bail Return Spring	.15
500-43	Spool Housing Washer	.10	500-97	Bail Bearing Screw	.20	500-448	Bail Pivot Stud	.35
500-53	Cam Follower Screw	.05	500-130A	Frame Assembly	3.25	500-449	Trip Lever Spring	.25
500-129	Spring Cover Screw	.05	500-149	Cam Follower	.20			
500-57A	Spool Assembly	2.75	500-195	Friction Washer	.10			

PARTS LIST for No. 800 BUDDY SPINNING REEL



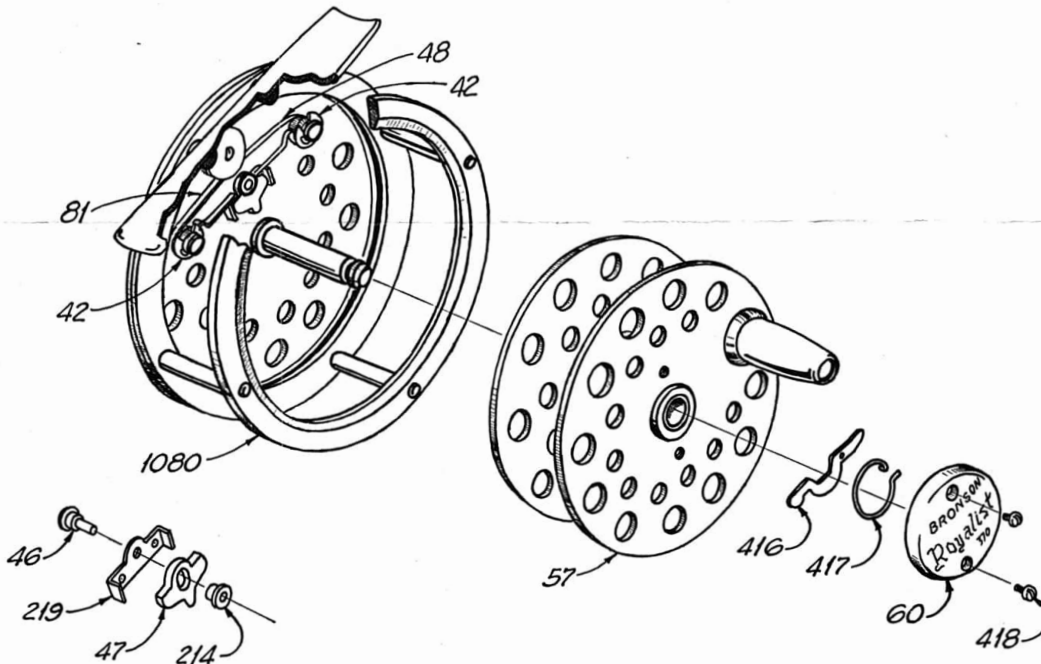
Part No.	NAME	Price Ea.	Part No.	NAME	Price Ea.	Part No.	NAME	Price Ea.
800-01A	Head Cap Assembly	\$1.75	800-71	Pinion	1.10	800-195	Friction Washer	.10
800-26	Frame Screw	.05	800-81	Drag Spring	.08	800-288	Roller	.20
800-31	Crank Screw	.15	800-84	Drag Button	.20	800-318	Bail Wire Nut	.20
800-32	Crank Washer	.10	800-87A	Bail Wire Assembly	1.30	800-325	Spool Housing Nut	.08
800-42	Retainer Ring	.08	800-94	Bail Wire Bracket	.35	800-448A	Bail Pivot Stud Assembly	.50
800-43	Spool Housing Washer	.25	800-96A	Spool Housing Assembly	2.00	800-455	Bail Wire Nut Lockwasher	.10
800-57	Spool	1.75	800-130A	Frame Assembly	2.00	800-458	Bail Pivot Stud Locknut	.08
800-58A	Spool Shaft Assembly	1.00	800-149	Cam Follower	.20	800-1220	Crank Assembly	.80
800-68A	Drive Gear Assembly	1.30	800-171	Drag Washer	.10			

PARTS LIST for No. 390 ROYALMATIC FLY REEL



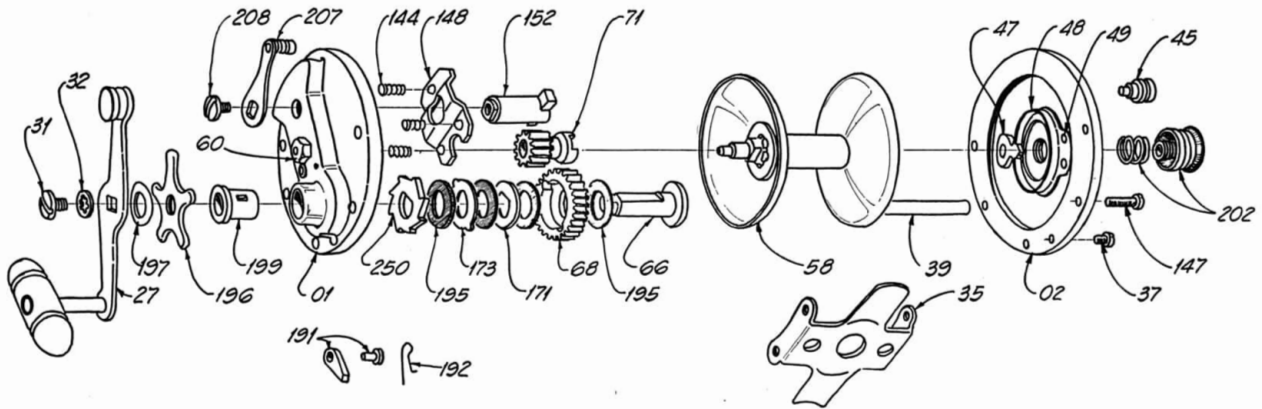
Part No.	NAME	Price Ea.	Part No.	NAME	Price Ea.	Part No.	NAME	Price Ea.
390-31	Crank Plate Screw	\$.15	390-428	Brake Shoe Screw	.15	390-1241	Drive Gear Assembly	.50
390-57	Spool Assembly	4.00	390-432	Spring Case Plate	2.00	390-1242	Idler Pinion Assembly	.50
390-171	Friction Washer	.10	390-438	Brake Shoe Spring	.20	390-1252	Spring Case Assy. & Spring	3.00
390-195	Drag Washer	.10	390-440	Brake Arm Shaft	.25	390-1267	Brake Arm Assembly	2.00
390-404	Idler Gear	.25	390-1080	Frame Assembly	4.00	390-1269	Brake Shoe Assembly	.65
390-417	Release Lever Spring	.20	390-1206	Bridge & Head Cap Assy.	2.50	390-1395	Cross Bolt Assembly	.60
390-424	Washer	.15						

PARTS LIST for No. 370 ROYALIST FLY REEL



Part No.	NAME	Price Ea.	Part No.	NAME	Price Ea.	Part No.	NAME	Price Ea.
370-42	Retainer Ring	\$.08	370-60	Spool Cap	.40	370-416	Release Pawl	.25
370-46	Click Hammer Rivet	.25	370-81	Drag Spring	.25	370-417	Release Spring	.20
370-47	Click Hammer	.25	370-214	Click Hammer Bushing	.15	370-418	Spool Cap Screw	.10
370-48	Click Spring	.25	370-219	Click Hammer Bracket	.35	370-1080	Frame Assembly, complete	6.50
370-57	Spool Assembly	3.75						

BRONSON SALT WATER REEL PARTS



PART NAME	PRICE EACH	65	150	210	250
Cam Lever	\$.30		250207	250207	250207
Cam Lever Screw15		250208	250208	250208
Cam Plate & 3 Springs40		150148-144	150148-144	250148-144
Click Button, Rivet & Hammer40	3645-7			
Click Button20		25045	25045	25045
Click Hammer Washer20		12547	12547	12547
Click Spring & Rivets25	3648-9	25048-9	25048-9	25048-9
Crank Assembly	1.50	6527	25027	25027	25027
Crank Screw & Lock Washer20		25031-2	25031-2	25031-2
Drive Gear90	6568	25068	25068	25068
Friction Sleeve20	65199	250199	250199	250199
Gear Staff Ratchet15	65250	250250	250250	250250
Gear Staff & Pin90	6566			
Gear Staff75		25066	25066	25066
Head Cap Assembly	3.50	6501			
Head Cap Assembly (Sp. Cap)	1.25		15001	15001	25001
Head Spool Cap35	*6599	25060	25060	25060
Level Wind Pawl, Plate & Screw25	*6552-3-4			
Level Wind Screw65	*6521			
Line Carriage90	*6520			
Pawl & Shaft15	65191	250191	250191	250191
Pawl Spring15	65192	250192	250192	250192
Pinion Gear60	2971	15071	15071	25071
Rod Clip90		15035	21035	25035
Spool Assembly	2.50	6558			
Spool Assembly	1.75		15058	21058M	25058
Tail Spool Cap & Spring40	2960	250202	250202	250202
Tail Plate (Sp. Cap)	2.50	6502			
Tail Plate (Sp. Cap)	1.25		15002	15002	25002
Screws, Bridge05	29121			
Screws, Pillar05	3614	6147	6147	6147
Screws, Head Cap — Rod Clip05	65233	8637	8637	6232
Screws, Tail Plate — Rod Clip05	3614	8637	8637	637
Star Wheel50	108196	250196	250196	250196
Washer, Cupped Drag Spring10	6172			
Washer, Drive Gear10		6171	6171	6171
Washer, Drag, leather10	6195	6195	6195	6195
Washer, Drive Gear, keyed10	6173	6173	6173	6173
Washer, Upper Star Wheel10	6197	6197	6197	6197

*See BRONSON CASTING REEL TAKE-DOWN Illustration.