

# **REEL REPLACEMENT PARTS**

**FOR**

# **BRONSON REELS**

**CATALOG NO. 57**

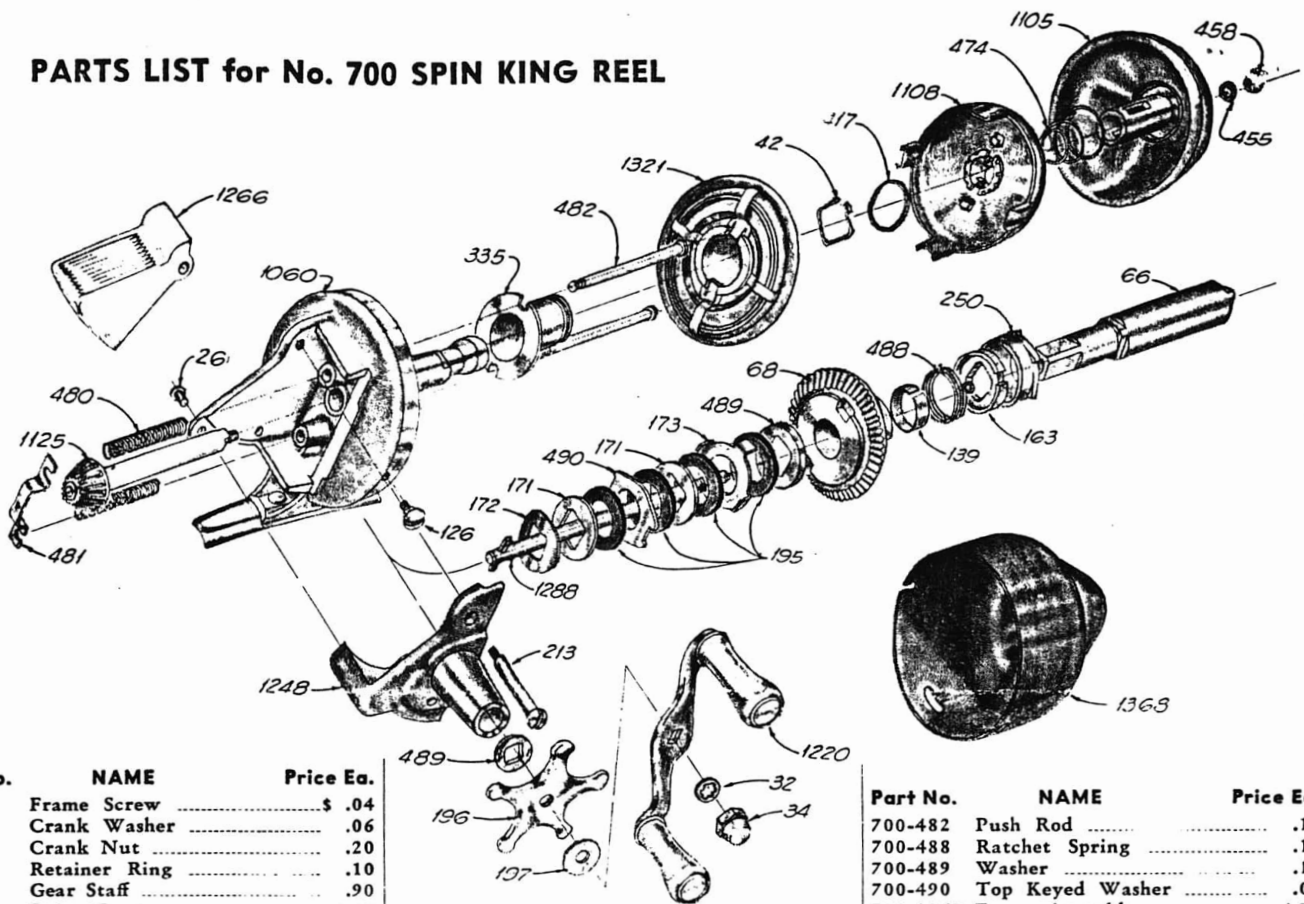
**BRONSON REEL COMPANY**

**DIV. HIGBIE MANUFACTURING CO.**

**BRONSON, MICHIGAN**

GR

## PARTS LIST for No. 700 SPIN KING REEL

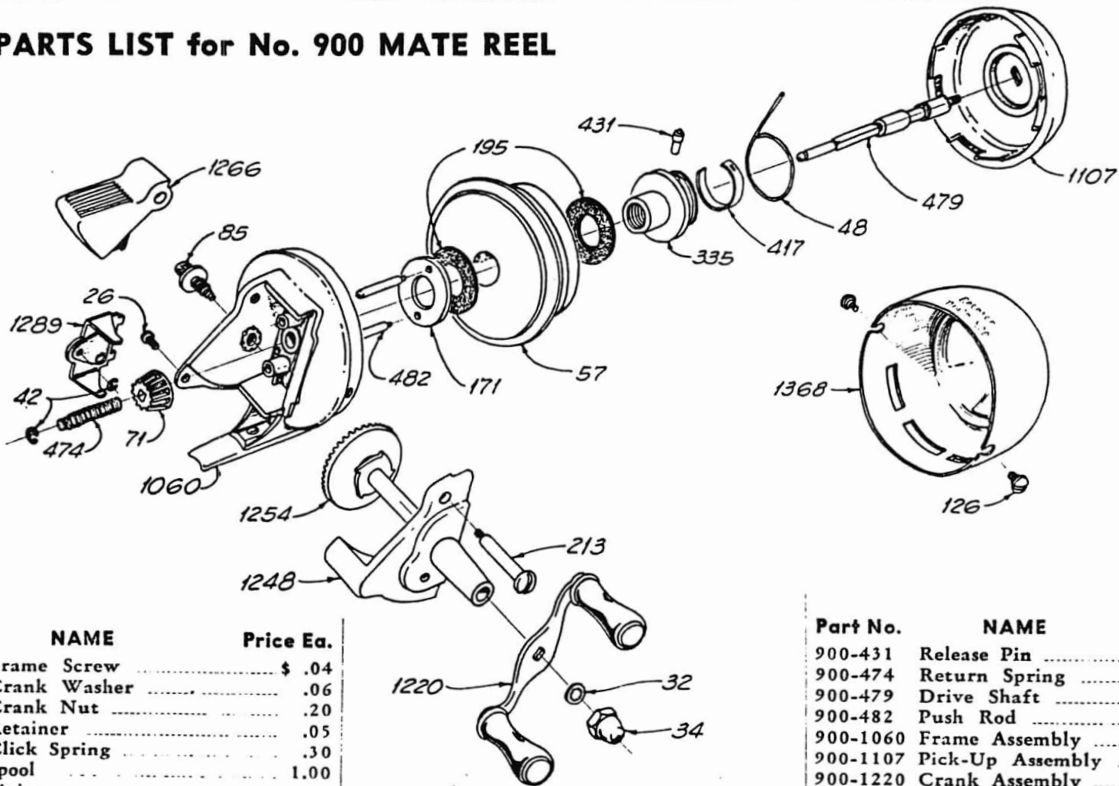


Part No.	NAME	Price Ea.
700-26	Frame Screw	\$.04
700-32	Crank Washer	.06
700-34	Crank Nut	.20
700-42	Retainer Ring	.10
700-66	Gear Staff	.90
700-68	Drive Gear	1.50
700-126	Cover Lock Screw	.04
700-139	Clutch Band	.15
700-163	Ratchet Washer	.30
700-171	Drag Washer	.06
700-172	Spring Washer	.06
700-173	Keyed Washer	.06
700-195	Friction Washer	.06
700-196	Star Wheel	.40
700-197	Star Wheel Washer	.06

Part No.	NAME	Price Ea.
700-213	Lever Shaft	.10
700-250	Gear Staff Ratchet	.25
700-335	Spool Seat	.35
700-417	Release Spring	.10
700-458	Drive Shaft Nut	.10
700-474	Pick-Up Return Spring	.10
700-480	Push Rod Spring	.10
700-481	Push Rod Bar	.10

Part No.	NAME	Price Ea.
700-482	Push Rod	.10
700-488	Ratchet Spring	.10
700-489	Washer	.10
700-490	Top Keyed Washer	.06
700-1060	Frame Assembly	4.75
700-1105	Brake Drum Assembly	1.20
700-1108	Pick-Up Assembly	1.50
700-1125	Pinion & Shaft Assembly	.75
700-1220	Crank Assembly	.75
700-1248	Head Cap Assembly	2.00
700-1266	Brake Lever Assembly	.40
700-1288	Drag Shaft Assembly	.35
700-1321	Spool Assembly	1.25
700-1368	Cover Assembly	1.65

## PARTS LIST for No. 900 MATE REEL

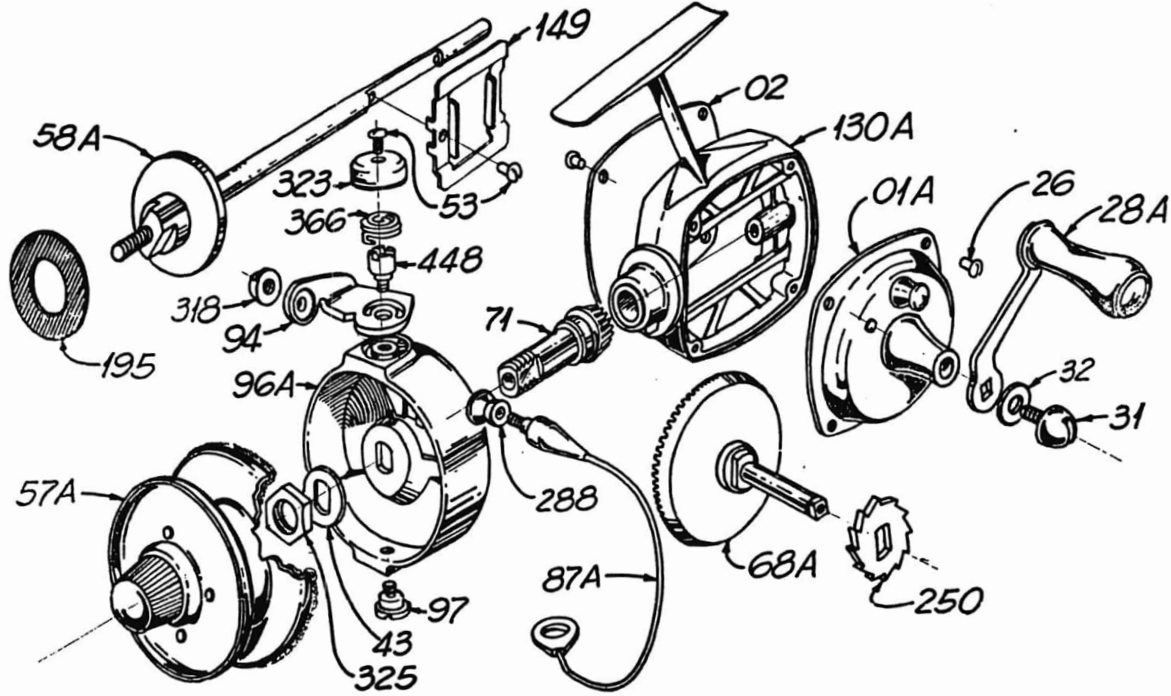


Part No.	NAME	Price Ea.
700-26	Frame Screw	\$.04
700-32	Crank Washer	.06
700-34	Crank Nut	.20
800-42	Retainer	.05
900-48	Click Spring	.30
900-57	Spool	1.00
900-71	Pinion	.30
900-85	Drag Adjusting Screw	.40
700-126	Cover Lock Screw	.04
700-139	Clutch Band	.15
700-163	Ratchet Washer	.30
700-171	Drag Washer	.06
700-172	Spring Washer	.06
700-173	Keyed Washer	.06
700-195	Friction Washer	.06
700-196	Star Wheel	.40
700-197	Star Wheel Washer	.06

Part No.	NAME	Price Ea.
700-213	Lever Shaft	.10
900-335	Spool Seat	.50
900-417	Release Spring	.10

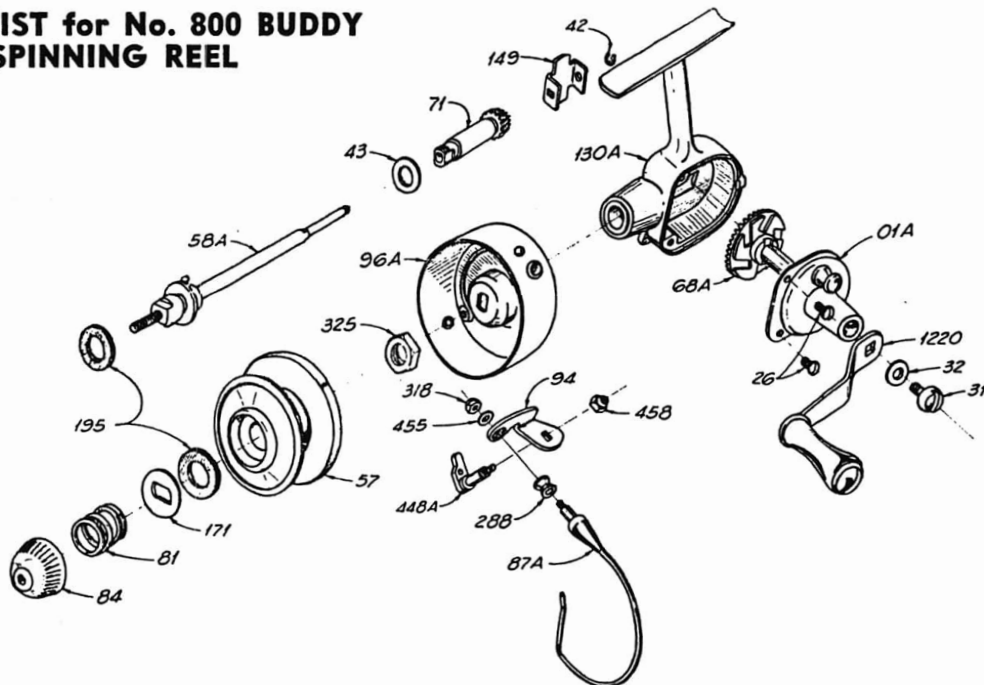
Part No.	NAME	Price Ea.
900-431	Release Pin	.10
900-474	Return Spring	.05
900-479	Drive Shaft	.80
900-482	Push Rod	.10
900-1060	Frame Assembly	4.00
900-1107	Pick-Up Assembly	2.00
900-1220	Crank Assembly	.75
900-1248	Head Cap Assembly	2.00
900-1254	Drive Gear Assembly	1.00
900-1266	Brake Lever Assembly	.50
900-1289	Drag Lever Assembly	.70
900-1368	Cover Assembly	1.50

## PARTS LIST for No. 500 "JET" SPINNING REEL



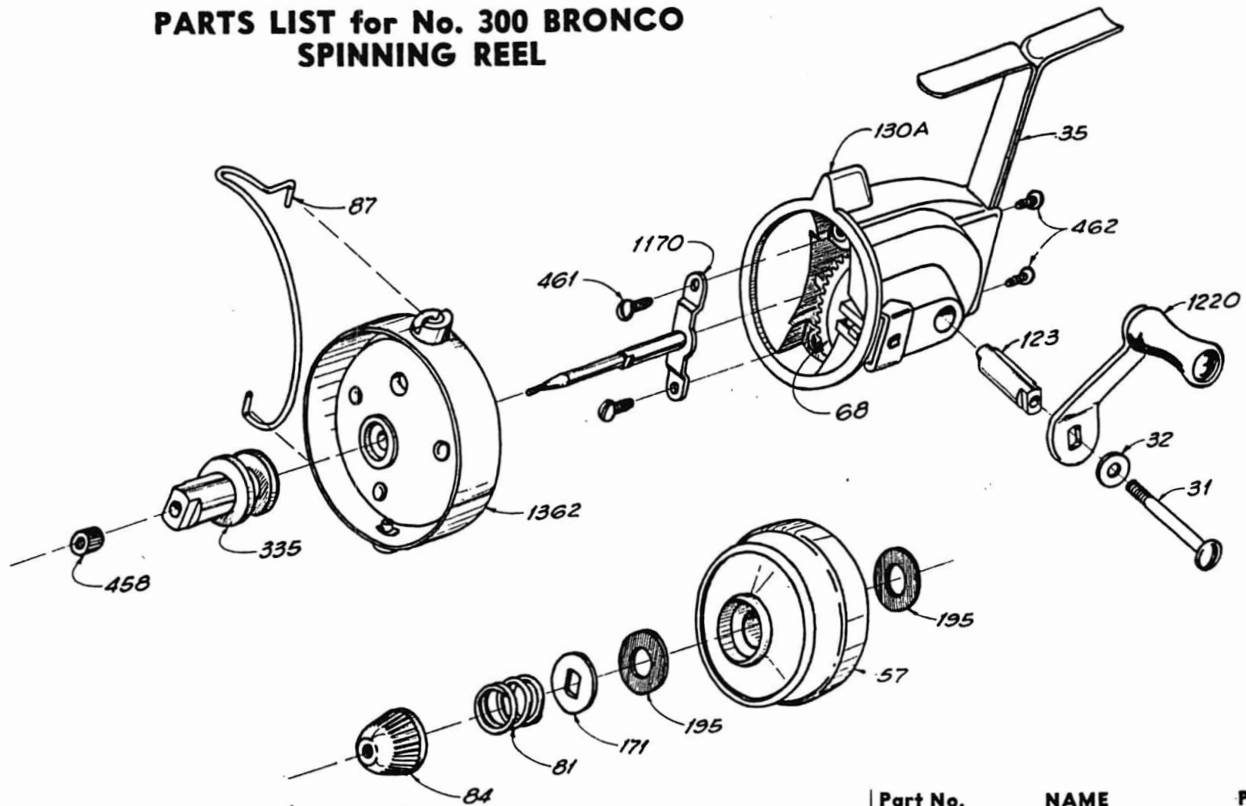
Part No.	NAME	Price Ea.	Part No.	NAME	Price Ea.	Part No.	NAME	Price Ea.
500-01A	Head Cap Assembly	\$1.00	500-57A	Spool Assembly	2.50	500-149	Cam Follower	.15
500-02	Tail Plate	.25	500-58A	Spool Shaft Assembly	.75	500-195	Friction Washer	.06
500-26	Frame Screw	.04	500-68A	Drive Gear Assembly	1.35	500-250	Ratchet	.20
500-28A	Crank Assembly	.65	500-71	Pinion	.90	500-288	Roller	.10
500-31	Crank Screw	.15	500-87A	Bail Wire Assembly	1.00	500-318	Bail Wire Nut & Washer	.20
500-32	Crank Washer	.06	500-94	Bail Wire Bracket	.25	500-323	Spring Cover	.10
500-43	Spool Housing Washer	.06	500-96A	Spool Housing Assembly	2.40	500-325	Spool Housing Nut	.10
500-53	Cam Follower Screw	.04	500-97	Bail Bearing Screw	.15	500-366	Bail Return Spring	.10
500-129	Spring Cover Screw	.04	500-130A	Frame Assembly	2.75	500-448	Bail Pivot Stud	.25

## PARTS LIST for No. 800 BUDDY SPINNING REEL



Part No.	NAME	Price Ea.	Part No.	NAME	Price Ea.	Part No.	NAME	Price Ea.
800-01A	Head Cap Assembly	\$1.50	800-71	Pinion	.90	800-195	Friction Washer	.06
800-26	Frame Screw	.04	800-81	Drag Spring	.05	800-288	Roller	.15
800-31	Crank Screw	.10	800-84	Drag Button	.15	800-318	Bail Wire Nut	.15
800-32	Crank Washer	.06	800-87A	Bail Wire Assembly	1.10	800-325	Spool Housing Nut	.05
800-42	Retaining Ring	.05	800-94	Bail Wire Bracket	.25	800-448A	Bail Pivot Stud Assembly	.35
800-43	Spool Housing Washer	.20	800-96A	Spool Housing Assembly	1.50	800-455	Bail Wire Nut Lockwasher	.06
800-57	Spool	1.50	800-130A	Frame Assembly	1.70	800-458	Bail Pivot Stud Locknut	.05
800-58A	Spool Shaft Assembly	.80	800-149	Cam Follower	.15	800-1220	Crank Assembly	.65
800-68A	Drive Gear Assembly	1.15	800-171	Drag Washer	.06			

## PARTS LIST for No. 300 BRONCO SPINNING REEL



Part No.	NAME	Price Ea.	Part No.	NAME	Price Ea.	Part No.	NAME	Price Ea.
300-31	Crank Screw	\$.04	300-84	Drag Button	.15	300-335	Spool Seat	.45
300-32	Crank Washer	.06	300-87	Bail Wire	.10	300-458	Spool Seat Nut	.05
300-35	Rod Clip	.20	300-123	Gear Shaft	.25	300-461	Bridge Screw	.04
300-57	Spool	1.00	300-130A	Frame Assembly	.65	300-462	Rod Clip Screw	.04
300-68	Drive Gear	.25	300-171	Drag Washer	.06	300-1170	Bridge Assembly	.45
300-81	Drag Spring	.05	300-195	Friction Washer	.06	300-1220	Crank Plate Assembly	.25
						300-1362	Pick-Up Disc Assembly	1.95

## HOW TO GET REELS REPAIRED

On a separate sheet herewith, you will find a complete list of Bronson Authorized Repair Service Centers. Normally, for faster service, you should forward any reels for repair to the Repair Service Center nearest you. If you prefer, you may send such reels directly to the factory for repair. If there is any question as to warranty, always send such reels directly to the factory.

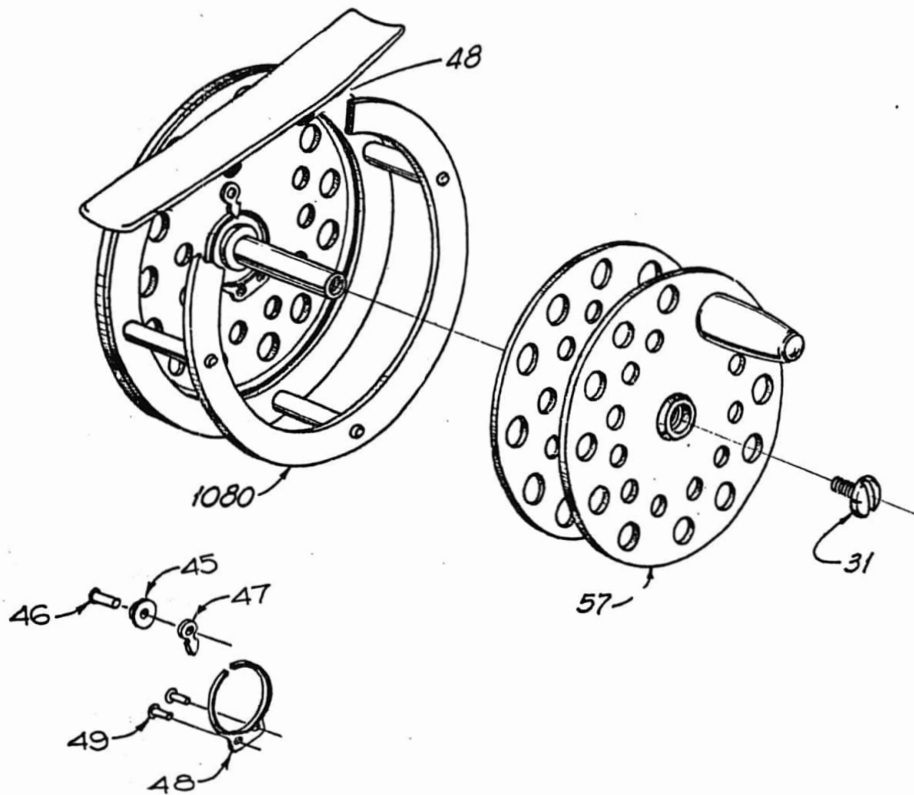
## HOW TO ORDER REEL REPLACEMENT PARTS

To determine the name and number of reel parts required, refer to the take-down illustrations herein. Always give the following information when ordering any parts.

1. Part number
2. Part name
3. Reel number

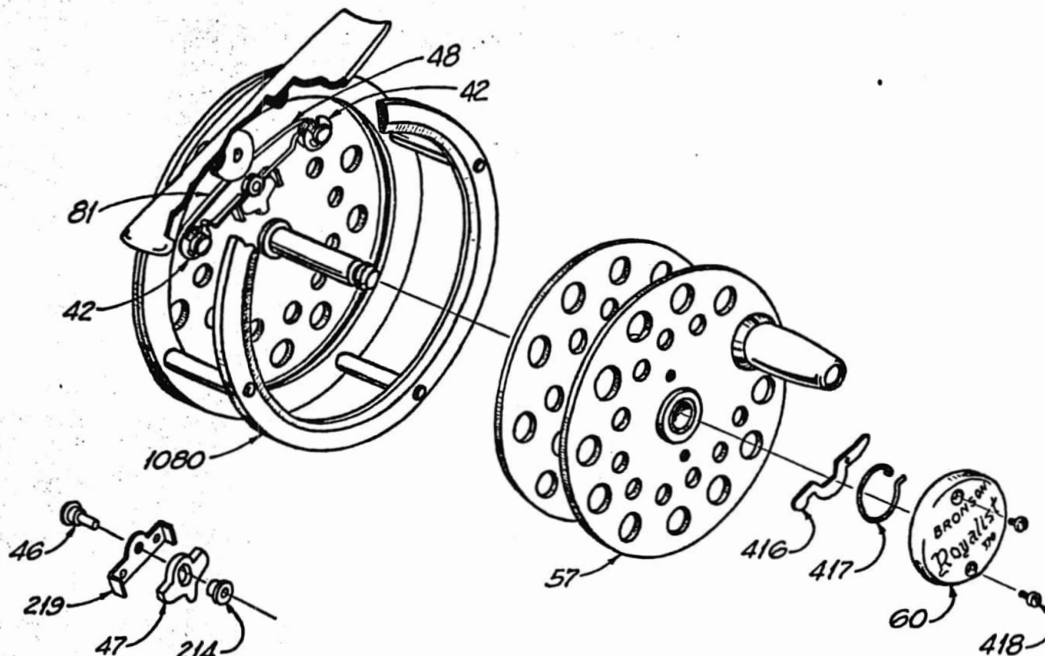
Orders for reel parts may be sent to your nearest Authorized Repair Service Center or directly to the factory as you prefer. The prices on any and all parts are subject to change without notice.

## PARTS LIST FOR No. 360 ROYAL FLY REEL



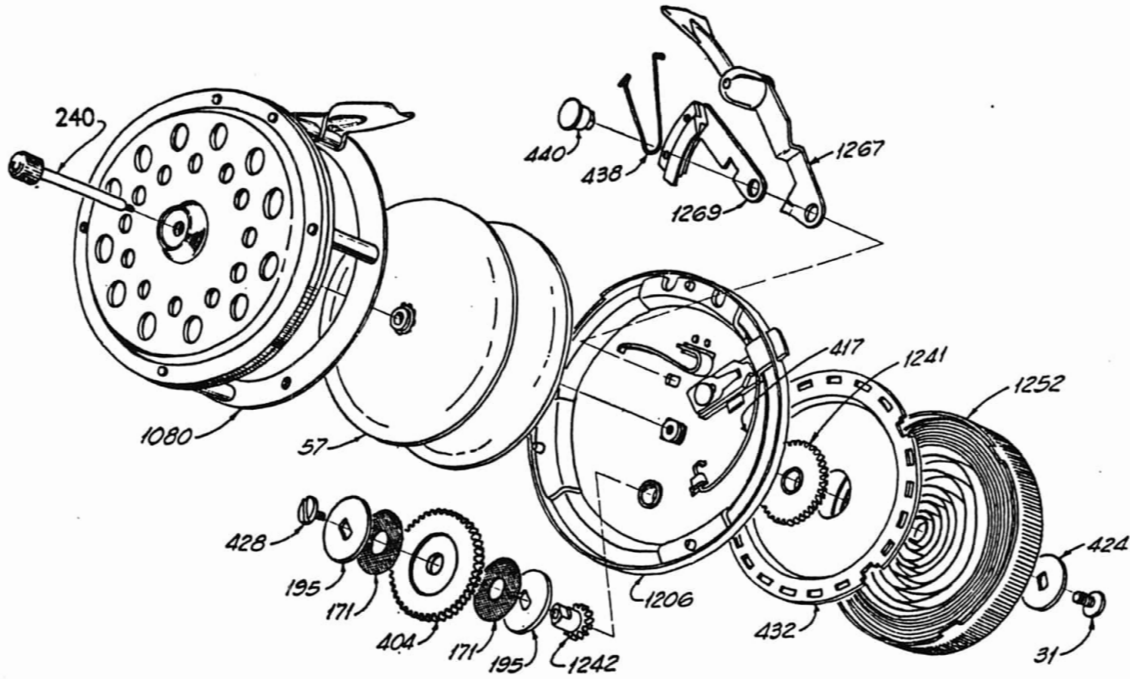
Part No.	NAME	Price Ea.	Part No.	NAME	Price Ea.	Part No.	NAME	Price Ea.
360-31	Spool Shaft Screw	\$.20	18-47	Click Hammer	.15	360-57	Spool Assembly	2.25
36-45	Click Button	\$.25	36-48	Click Spring	.15	360-1080	Frame Assembly, complete	3.25
360-46	Click Button Shaft	.20	18-49	Click Spring Rivet	.05			

## PARTS LIST FOR No. 370 ROYALIST FLY REEL



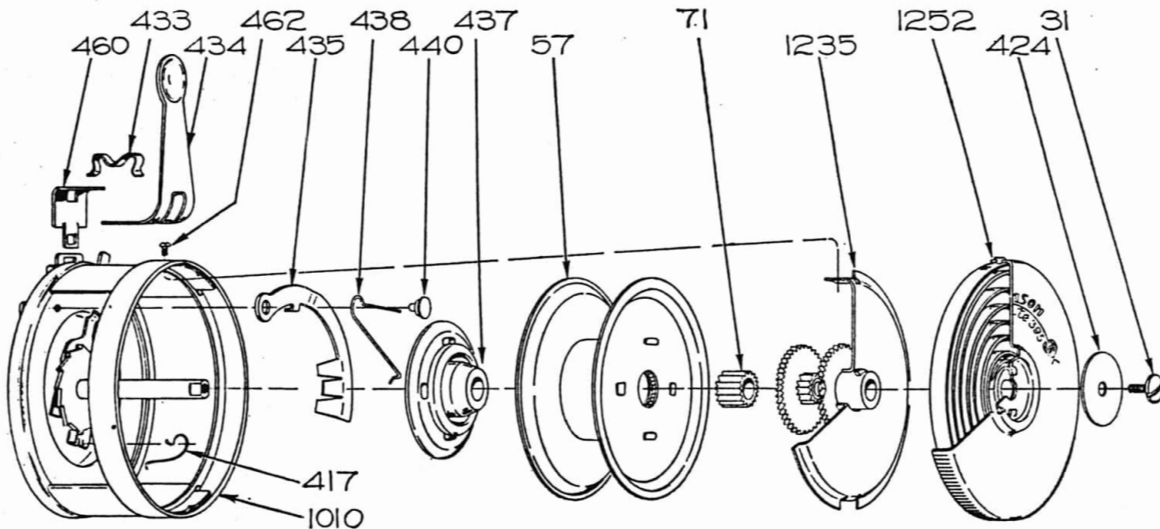
Part No.	NAME	Price Ea.	Part No.	NAME	Price Ea.	Part No.	NAME	Price Ea.
370-42	Retainer Ring	\$.10	370-60	Spool Cap	.45	370-416	Release Pawl	.25
370-46	Click Hammer Rivet	.30	370-81	Drag Spring	.30	370-417	Release Spring	.20
370-47	Click Hammer	.30	370-214	Click Hammer Bushing	.20	370-418	Spool Cap Screw	.10
370-48	Click Spring	.30	370-219	Click Hammer Bracket	.35	370-1080	Frame Ass'y, complete	6.50
370-57	Spool Assembly	3.75						

## PARTS LIST FOR No. 390 ROYALMATIC FLY REEL



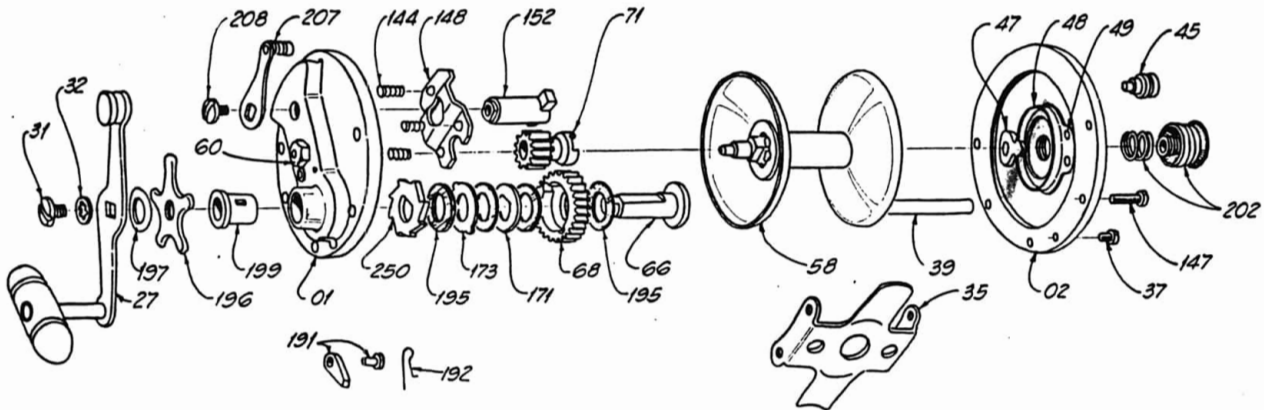
Part No.	NAME	Price Ea.	Part No.	NAME	Price Ea.	Part No.	NAME	Price Ea.
390-31	Crank Plate Screw	\$.25	390-428	Screw	.15	390-1241	Drive Gear Assembly	.60
390-57	Spool Assembly	4.25	390-432	Spring Case Plate	2.00	390-1242	Idler Pinion Assembly	.60
390-171	Friction Washer	.10	390-438	Brake Shoe Spring	.20	390-1252	Spring Case Ass'y & Spring	3.25
390-195	Drag Washer	.10	390-440	Brake Arm Shaft	.30	390-1267	Brake Arm Assembly	2.00
390-404	Idler Gear	.30	390-1080	Frame Assembly	4.50	390-1269	Brake Shoe Assembly	.65
390-417	Release Lever Spring	.20	390-1206	Bridge & Head Cap Ass'y	2.75	390-240	Cross Bolt Assembly	.60
390-424	Washer	.20						

## PARTS LIST FOR No. 395 ROYALITE FLY REEL



Part No.	NAME	Price Ea.	Part No.	NAME	Price Ea.	Part No.	NAME	Price Ea.
380-31	Spring Case Screw	\$.20	395-434	Brake Arm	.55	395-460	Brake Slide	.40
395-57	Spool Assembly	2.25	395-435	Brake	.45	395-462	Self Tapping Screw	.05
395-71	Pinion	.45	395-437	Brake Disc	.40	395-1010	Frame Assembly	3.25
395-417	Pawl Spring	.25	395-438	Brake Spring	.20	395-1235	Bridge Assembly	2.25
395-424	Washer	.20	395-440	Brake Shaft	.20	395-1252	Spring Case Ass'y & Spring	2.75
395-433	Brake Arm Spring	.45						

# BRONSON SALT WATER REEL PARTS



PART NAME	PRICE EACH	65	150	210	250
Cam Lever .....	\$ .25		250207	250207	250207
Cam Lever Screw .....	.10		250208	250208	250208
Cam Plate & 3 Springs .....	.30		150148-144	150148-144	250148-144
Click Button, Rivet & Hammer .....	.30	3645-7			
Click Button .....	.15		25045	25045	25045
Click Hammer Washer .....	.15		12547	12547	12547
Click Spring & Rivets .....	.20	3648-9	25048-9	25048-9	25048-9
Crank Assembly .....	1.20	6527	25027	25027	25027
Crank Screw & Lock Washer .....	.15		25031-2	25031-2	25031-2
Drive Gear .....	.75	6568	25068	25068	25068
Friction Sleeve .....	.15	65199	250199	250199	250199
Gear Staff Ratchet .....	.10		250250	250250	250250
Gear Staff & Pin .....	.75	6566			
Gear Staff .....	.50		25066	25066	25066
Head Cap Assembly .....	3.00	6501			
Head Cap Assembly (Sp. Cap) .....	1.00		15001	15001	25001
Head Spool Cap .....	.25	*6599	25060	25060	25060
Level Wind Pawl, Plate & Screw .....	.20	*6552-3-4			
Level Wind Screw .....	.50	*6521			
Line Carriage .....	.75	*6520			
Pawl & Shaft .....	.10	65191	250191	250191	250191
Pawl Spring .....	.10	65192	250192	250192	250192
Pinion Gear .....	.45	2971	15071	15071	25071
Rod Clip .....	.75		15035	21035	25035
Spool Assembly .....	2.00	6558			
Spool Assembly .....	1.50		15058	21058M	25058
Tail Spool Cap & Spring .....	.30	2960	250202	250202	250202
Tail Plate (Sp. Cap) .....	2.00	6502			
Tail Plate (Sp. Cap) .....	1.00		15002	15002	25002
Screws, Bridge .....	.04	29121			
Screws, Pillar .....	.04	3614	6147	6147	6147
Screws, Head Cap - Rod Clip .....	.04	65233	8637	8637	6232
Screws, Tail Plate - Rod Clip .....	.04	3614	8637	8637	637
Star Wheel .....	.40	108196	250196	250196	250196
Washer, Cupped Drag Spring .....	.06	6172			
Washer, Drive Gear .....	.06		6171	6171	6171
Washer, Drag, leather .....	.06	6195	6195	6195	6195
Washer, Drive Gear, keyed .....	.06	6173	6173	6173	6173
Washer, Upper Star Wheel .....	.06	6197	6197	6197	6197

\*See BRONSON CASTING REEL TAKE-DOWN Illustration.

