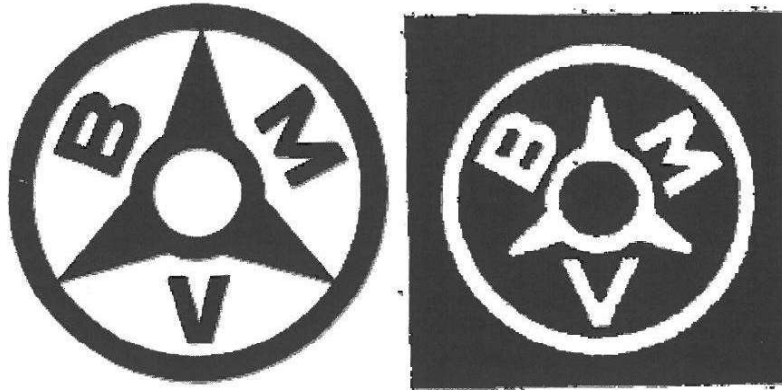


## The short story about BMV and their production in the 1950's

The letters **BMV** is short **B**rothers **M**üller (family name) and they were located in the village of Vollerup in the south-western part of Denmark – near the Danish/German border. The brothers Hubert and Arthur and they founded the company in 1930 – manufacturing Valves for the nearby famous Danfoss a.o.

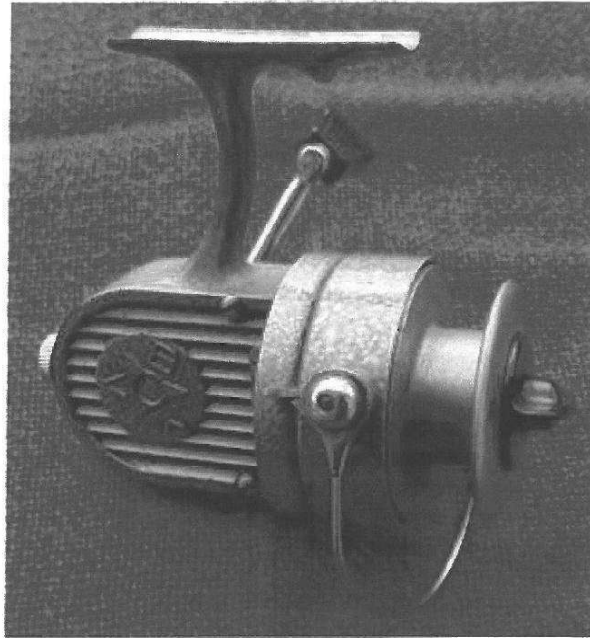


Due to shortage of nearly everything in the years after WW2, the company started producing fishing tackle in 1948 and the production went on for nearly 9 years - 1950's – when the imported tackle, especially from Asia – began to flood the market and make the a production uneconomic.

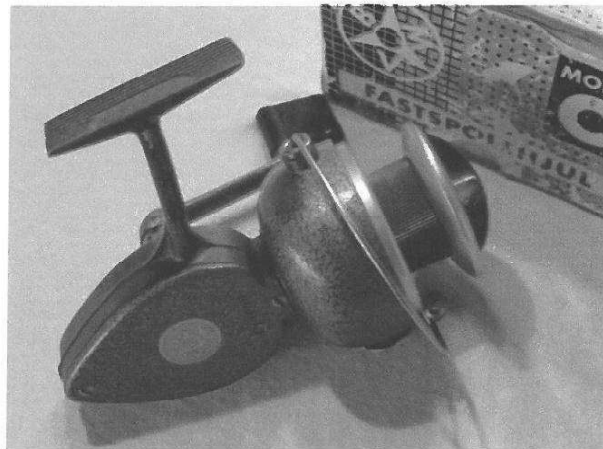
In that 8 –9 year period BMV managed to produce 7 different fixed spool reels, all left-hand models with full bail arm and adjustable brake. They are:



**Model A** in 1948 (no model marking) was made in approx. 600 pcs., and the similarities with the DAM Senior are obvious. The housing was (sand)casted – painted black – with a 3 digit number (on the foot)

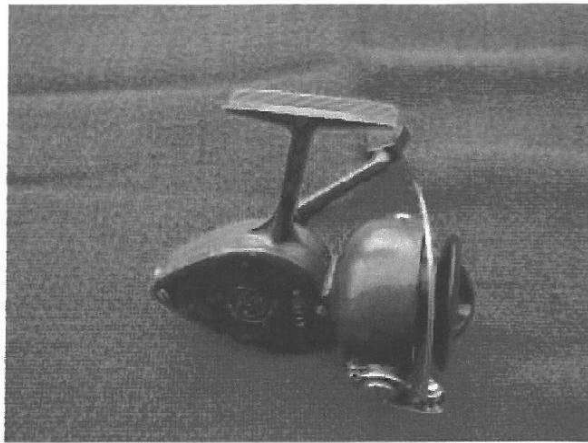


**Model B** (1952-54) was made in approx. 2000 pcs. Dark green paint – 4 digit number (on the foot)



**Model C** (1955-56) was made in approx. 8000 pcs. Light green hammer tone paint – (the first production lots were with a curry yellow pint with a 3 digit number on the foot) the remaining and the majority of the production with a 4 digit number.

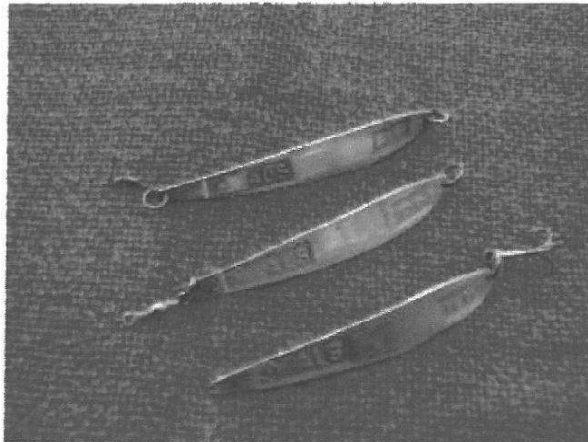
**Model D** (1955) we don't know the production figure. The first batches had a yellow/green paint with a 3-digit number in the housing, later the hammer tone finish was added – with a 4-digit number. This was the first BMV model with worm drive (worm pinion) and the BMV logo plate on the housing.



**Model E** (1955) made in approx. 7.000 pcs., was a cheaper edition of D model with a nylon spool and pinion – but with a worm drive. Red/brown hammer tone finish. 4 digit number in the reel housing Logo. ‘BMV’ and ‘Made in Denmark’ casted in the side plate.

**Model F** (1955/56) we don’t know the production figure. It is a cheap edition of the C model with a nylon spool and pinion – but with a worm drive. Red/brown hammer tone finish. 4 digit number in the reel housing. ‘BMV’ and ‘Made in Denmark’ casted in the side plate.

**Model Andrika** (1956-57) made in approx. 2000 pcs., made for export to USA and Canada. The reel is very similar to model D – same yellow/green hammer tone finish, snake drive – however, it has a push button spool (as the only BMV) and ‘model A’ was casted in the side plate. A 4 digit number inside the spool housing with a letter in front.



BMV did also produce a 25 gram bait in gold- (brass), silver- and copper finish marked ‘ALS’ after the local peninsula where the factory was located.

Note:

Due to the limited production, several bastard-reels left the factory – either by the workers or due to missing parts during a production, however, they are expected mostly in the local area.

Heinz Gerhard  
May 12/2009