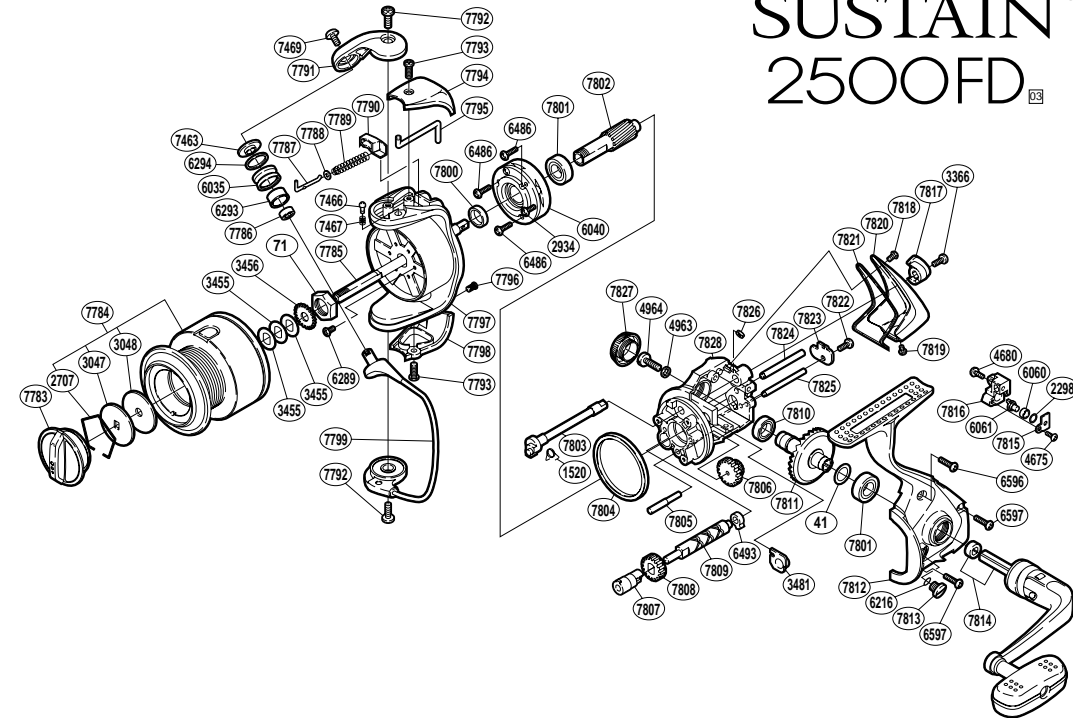


SUSTAIN[®]

2500FD⁰³



RD No.	PARTS NAMES	RD No.	PARTS NAMES	RD No.	PARTS NAMES
0041	Drive Gear Washer	6596	Side Cover Screw (short)	7803	Anti-Reverse Cam
0071	Rotor Nut	6597	Side Cover Screw (long)	7804	Friction Ring
1520	Anti-Reverse Cam Spring	7463	Line Roller Washer	7805	Idle Gear (B) Shaft
2298	Spacer	7466	Click Pin	7806	Idle Gear (B)
2707	Drag Washers Retainer	7467	Click Spring	7807	Worm Bushing (front)
2934	Clutch Cover Screw	7469	Line Roller Screw	7808	Idle Gear
3047	Key Washer	7783	Drag Knob	7809	Worm Shaft
3048	Drag Washer	7784	Spool Assembly	7810	Ball Bearing
3366	Anti-Reverse Lever Screw	7785	Main Shaft	7811	Drive Gear
3455	Spool Washer	7786	Ball Bearing	7812	Side Cover
3456	Spool Support	7787	Bail Spring Guide (A)	7813	Oil Cap
3481	Bushing	7788	Spring Guide (A) Support	7814	Handle Assembly
4675	Oscillating Pawl Cover Screw	7789	Bail Spring	7815	Oscillating Pawl Cover
4680	Slider Retainer Screw	7790	Bail Spring Seat	7816	Oscillating Slider
4963	Handle Lock Washer	7791	Bail Arm	7817	Anti-Reverse Lever
4964	Handle Screw Lock	7792	Multi-Purpose Screw	7818	Rear Protector Screw (B)
6035	Line Roller	7793	Multi-Purpose Screw	7819	Rear Protector Screw (C)
6040	Roller Clutch Assembly	7794	Bail Spring Cover	7820	Rear Protector
6060	Oscillating Slider Bushing	7795	Bail Trip Lever	7821	Rear Shield
6061	Oscillating Pawl	7796	Bail Hold Support Guard Screw	7822	Worm Shaft Retainer Screw
6216	"O" Ring	7797	Rotor	7823	Worm Shaft Retainer
6289	Nut Lock Screw	7798	Bail Hold Support Guard	7824	Oscillating Guide (B)
6293	Line Roller Bushing	7799	Bail Assembly	7825	Oscillating Guide (A)
6294	Line Roller Spacer	7800	Rotor Ring	7826	Rear Protector Nut
6486	Roller Clutch Screw	7801	Ball Bearing	7827	Handle Screw Cap
6493	Worm Bushing (rear)	7802	Pinion Gear	7828	Body