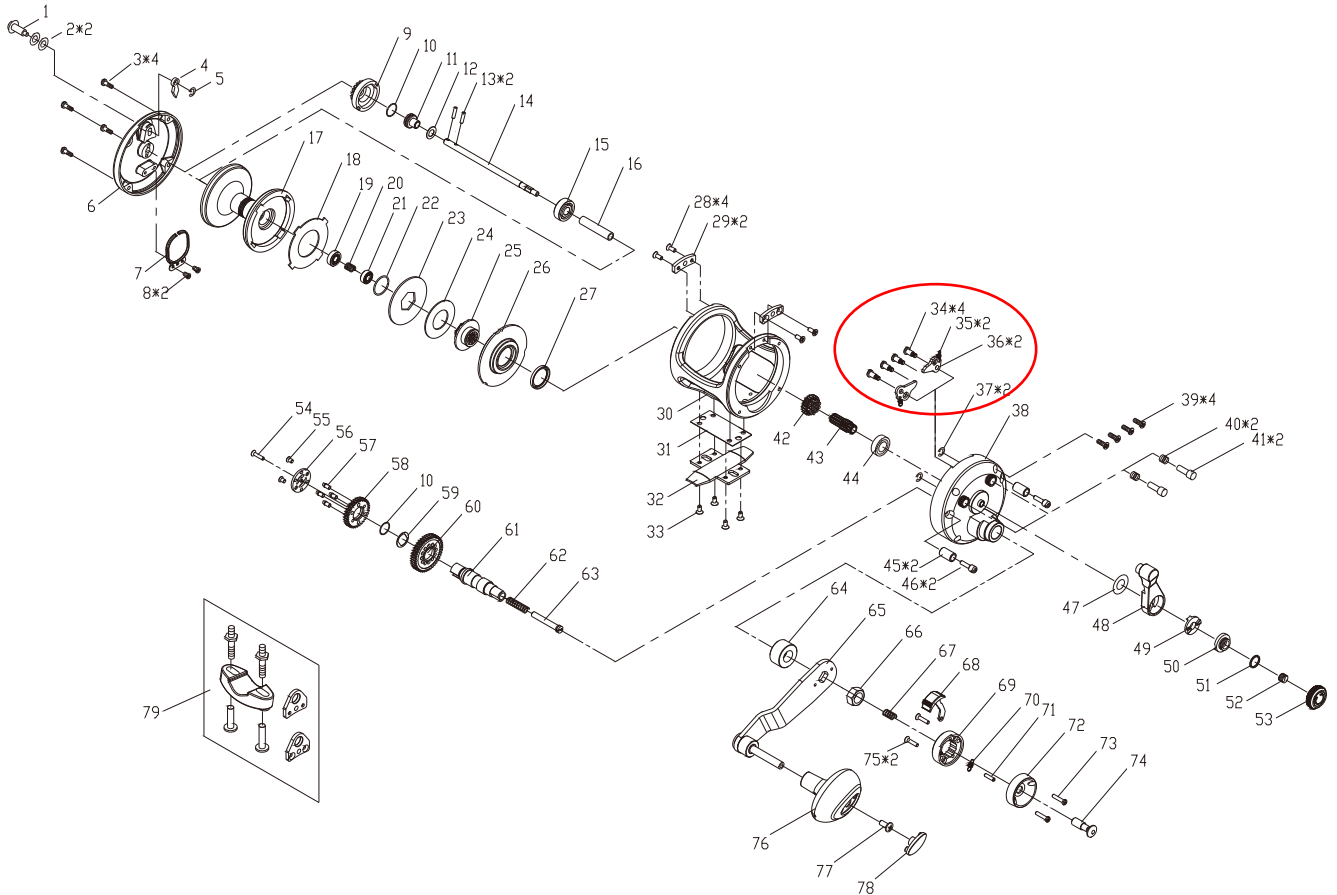


POSEIDON S12-II / S16-II



NO Part Name

- 1 Click Button
- 2 Washer(x2)
- 3 Screw(x4)
- 4 Click Pawl
- 5 E. Clip
- 6 Left Side Plate
- 7 Click Power Spring
- 8 Screw(x2)
- 9 Line Out Alarm Cog. Wheel
- 10 C-Clip(x2)
- 11 Bushing For Bearing
- 12 Washer
- 13 Pin For Spool Shaft(x2)
- 14 Spool Shaft
- 15 Ball Bearing
- 16 Bushing
- 17 Spool
- 18 Carbon Fiber Brake Washer
- 19 Ball Bearing
- 20 Spring
- 21 Ball Bearing
- 22 C-Clip
- 23 Brake Washer
- 24 Disc Spring Washer
- 25 Brake Washer Retainer
- 26 Waterproof Cover
- 27 Waterproof Washer

NO Part Name

- 28 Screw(x4)
- 29 Plate(x2)
- 30 Frame
- 31 Plastic Gasket
- 32 Foot
- 33 Foot Screw (x4)
- 34 Pin Screw (x4)
- 35 Anti-Reverse Spring(x2)
- 36 Anti-Reverse Pawl(x2)
- 37 E. Clip(x2)
- 38 Right Side Plae Assembly
- 39 Screw(x4)
- 40 Spring(x2)
- 41 Locating Button(x2)
- 42 Ratchet Gear
- 43 Pinion Gear
- 44 Ball Bearing
- 45 Stopper(x2)
- 46 Screw(x2)
- 47 Washer
- 48 Brake Lever
- 49 Lifter
- 50 Brake Cam
- 51 O-Ring
- 52 Spring
- 53 Pre-Set Knob
- 54 Plunger Screw

NO Part Name

- 55 Coupling Screw (x2)
- 56 Coupling Plate
- 57 Coupling Pin(x4)
- 58 Main Gear(Low Speed)
- 59 Washer
- 60 Main Gear(High Speed)
- 61 Main Gear Shaft
- 62 Shift Spring(Light)
- 63 Shift Plunger
- 64 Bushing
- 65 Handle Arm Assembly
- 66 Handle Nut
- 67 Shift Spring(Heavy)
- 68 Shift Bottom (High)
- 69 Handle Nut Reatiner
- 70 Spring
- 71 Pin
- 72 Shift Housing
- 73 Screw (x2)
- 74 Shift Bottom (Low)
- 75 Screw(x2)
- 76 Handle Knob
- 77 Screw
- 78 Handle Knob Cap
- 79 Rod Clamp Hardware