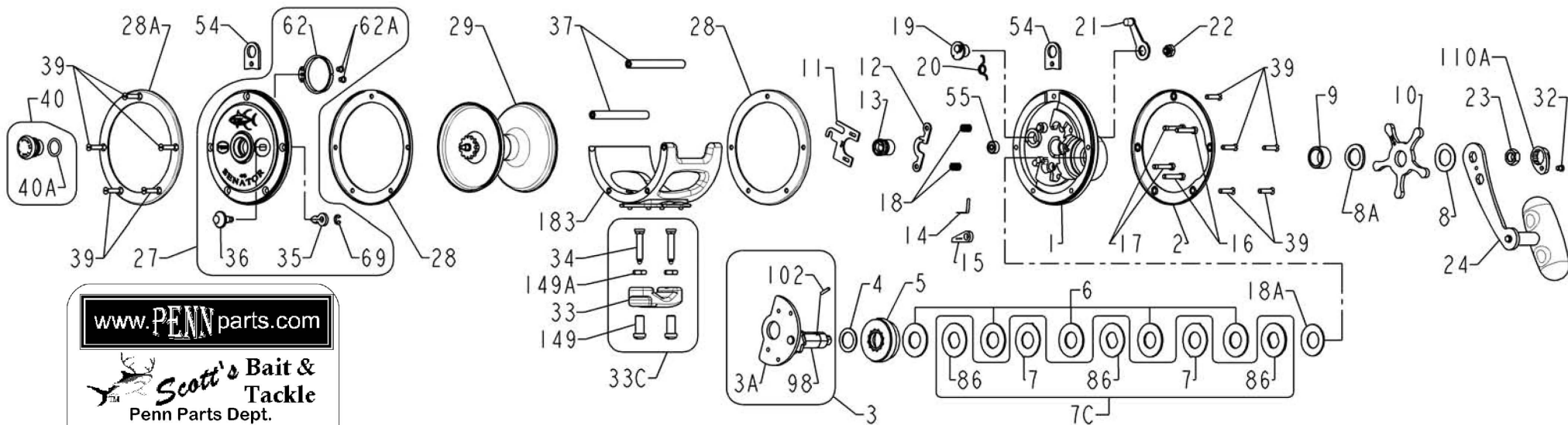




# PARTS LIST FOR MODELS 114H2



[www.PENNparts.com](http://www.PENNparts.com)

**Scott's Bait & Tackle**

Penn Parts Dept.  
945 Radio Road  
Tuckerton NJ 08087  
(609) 296-1300

No Minimum Order!  
Plus, Parts in stock  
that Penn doesn't  
carry anymore.

SBT Ver. 091010 (based on Penn's Rev 5)

# Penn Reel Parts list for Model: 114H2 6/0 Senator, Half Frame w/stand MADE IN CHINA

PUREFISHING				PUREFISHING			
KEY NO.	PART NO.	PART #	DESCRIPTION	KEY NO.	PART NO.	PART #	DESCRIPTION
1	1-114H2	1197483	Handle Side Plate	24	24-114H2	1197519	Handle
2	2N-114H	1180666	Handle Side Ring Outer	27	27-114H2	1197523	Non-Handle Side Plate
3	3-114H2	1197499	Bridge with Sleeve	28	2-114H2i	1197490	Non-Handle Side Ring Outer
3A	3-114H-1	1197500	Bridge sub-assembly without sleeve	28A	2N-114	1180665	Non-Handle Side Ring Outer
4	4-115	1180766	Fiber Washer	29	29-114H2	1191518	Spool, Aluminum
5	5-115	1180848	Main Gear	32	39-10	1183183	Handle Nut Cap Screw ((NOTE: orig. listed as 32-15, which is too long)
6	6-115	1180911	Drag Washer	33	33-114H2	1197532	Rod Clamp W/ SIDE RING
7	7-115	1181011	Metal Earred Drag Washer (uses 2)	33C	33C-114H2	1197534	KIT, Rod Clamp w/Studs and Nuts
7C	7C-115	1181044	Metal Drag Washer Set	34	34-16VS	1182786	Clamp Screw (2 Required)
8	8-114	1181067	Tension Spring	35	35-114	1182915	Click Tongue
8A	8-115	1181068	Tension Spring	36	36-114H	1182991	Click Button
9	9-114H	1181153	Spacing Sleeve	37	37M-114	1191722	Frame Post (2 Required)
10	10-114	1181185	Star Drag Wheel	39	39-12	1183184	Side Plate Screw (10 Required)
11	11-114	1181234	Eccentric Jack	40	40-114HL	1191766	Non-Handle Side Bearing Assembly
12	12-114	1181262	Pinion Yoke	40A	120-114H	1184523	Non-Handle Side Bearing O Ring
13	13-114H	1181322	Pinion	54	54-114	1183857	Harness Lug (2 Required)
14	14-114	1181395	Dog Spring	55	55-116	1183882	Handle Side Bearing
15	15-114H	1181438	Dog	62	62-114H2	1197546	Click Spring
16	16-114	1181572	Bridge Screw Lower (2 Required)	62A	31-2.5FR	1182662	Click Spring Screw
17	17-114	1181596	Bridge Screw Upper (2 Required)	69	69B-600	1184129	Retaining Ring
18	18-114	1181618	Clutch Spring	86	86-115L	1184255	Keyed Metal Washer (uses 3)
18A	18-114H	1181619	Spring Disc	98	98-114H2	1198891	Gear Sleeve w/pin
19	19-114	1181664	Eccentric	102	102-114	1192231	Pin f/gear sleeve
20	20-114	1181766	Eccentric Spring	110A	110A-114H2	1198893	Handle Nut Cap
21	21-114	1181845	Eccentric Lever	149	149-45	1184702	Clamp Nut (2 Required)
22	22-114H2	1197514	Eccentric Screw	149A	149-200	1184706	Hex Nut (2 Required)
23	23-114H2	1197515	Handle Screw	183	183-114H2	1198901	Frame, Half (stand included)

NOTE: Many of www.pennparts.com schematics include changes that were either made by Penn, or errors found and corrected by our parts dept.  
SBT Ver. 091010

OPTIONAL:  
33R-200 1182783 Thinner old-style metal clamp w/ring on back  
USE WITH:  
1184709 152-200 wing nuts INSTEAD of 149-45 long nuts