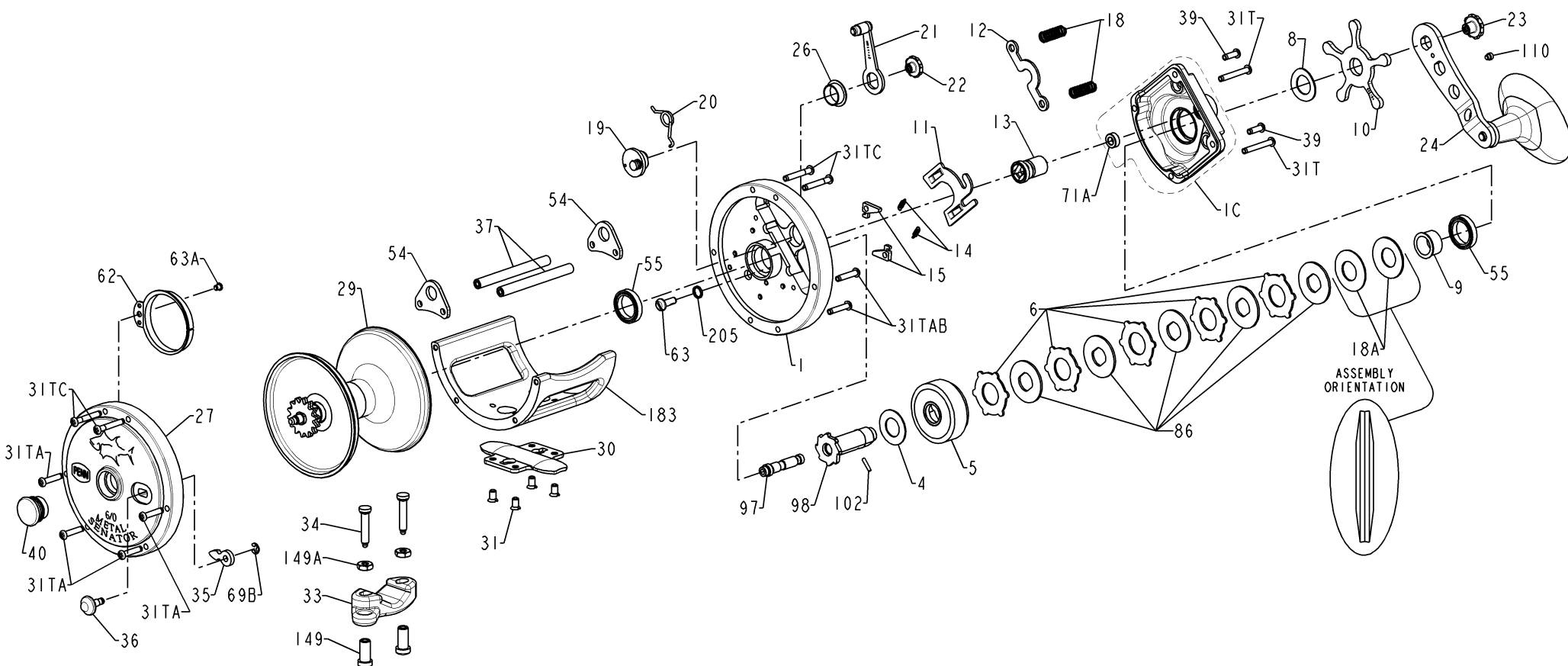




PARTS LIST FOR MODEL 114MTL



KEY NO	114M PART NO.	DESCRIPTION
1	001 114M	Right Side Plate
1C	001C114M	Right Side Plate Cover Assembly
4	004 113M	Graphite Washer
5	005 114M	Main Gear
6	006 525MAG	Drag Washer (5 req)
8	008 349	Tension Washer
9	009 114M	Spacing Sleeve
10	010 349	Drag Star
11	011 114	Eccentric Jack
12	012 114M	Pinion Yoke
13	013 114M	Pinion Gear
14	014 114M	Dog Spring (2 req)
15	015 113M	Anti Reverse Dog (2 req)
18	018 114	Clutch Spring (Yoke) (2 req)
18A	018 113M	Disc Spring (2 req)
19	019 114M	Eccentric
20	020 114	Eccentric Spring

KEY NO	114M PART NO.	DESCRIPTION
21	021 114M	Eccentric Lever Assembly
22	023 060	Eccentric Lever Screw
23	023 114	Handle Screw
24	024 114M	Handle Assembly
26	026 114M	Eccentric Bushing
27	027 114M	Left Side Plate
29	029 114M	Spool Assembly
30	030 016VS	Stand
31	031 016VS	Stand Mounting Screw (4 req)
31T	031T015KG	R.S. Cover Screw (Bottom)(2 req)
31TA	031TA200T	L. Side Plate Screw (Frame) (4 req)
31TAB	031TA300T	R. Side Plate Screw (Frame) (2 req)
31TC	031TC300T	Side Plate Screw (Post) (4 req)
33	033 113	Rod Clamp
34	034 016VS	Clamp Screw (2 req)
35	035 114	Click Tongue
36	036 114H	Click Button
37	037 114M	Frame Post (2 req)

KEY NO	114M PART NO.	DESCRIPTION
39	039 300LD	R.S. Cover Screw (Top)(2 req)
40	040 114HL	Bearing Cup Assembly
54	054 113M	Lug Harness (2 req)
55	055 114M	Ball Bearing (2 req)
62	062 114	Click Spring
63	063 030T	Gear Stud Screw
63A	063 209	Click Spring Screw
69B	069B600	Click Tongue Retaining Ring
71A	071A114M	Spindle Bushing
86	086 113M	Keyed Drag Washer (5 req)
97	097 113M	Gear Sleeve Stud
98	098 113M	Gear Sleeve
102	102 113	Gear Sleeve Pin
110	110 060	Handle Lock Screw
149	149 045	Rod Clamp Nut (2 req)
149A	149 200	Hex Nut (2 req)
183	183 114M	Frame
205	205 300T	Gear Stud Washer